

Sava

technical specification



.mdd

MDD has a leading position among manufacturers of office furniture with many awards that prove quality and continuously increase demand for its products.

The realities of today's market require constant quality improvement at all levels of modern organization. This applies in particular to customer service, marketing, quality of products and also to quality of processes within the company. Partnership relations among employees and with business partners form a base of economic growth and success of the company.

Constant investments in innovative machinery park, optimization of management systems and an expansion of production halls allow to minimize the lead times for the product of the highest quality.

More than twenty years of experience in office furniture industry come with reference from a long list of companies and institutions to show their appreciation for an efficient and comprehensive service.

MDD is highly aware of the environment.

Being located in the forest region with lake by its side, MDD takes the nature seriously and invests constantly in a modern and energy-efficient solutions to preserve the local life. Company puts emphasis on waste segregation and recycling. MDD has been awarded for the exceptional care and involvement in waste disposal. All materials used are environmentally friendly and enjoy a high 95 % rate of being recycled.



General informations:

Warranty:

MDD products - **5 years.**

Electrical components and fabric - **2 years.**

Certificate - MFC:



Certificate - fabric:



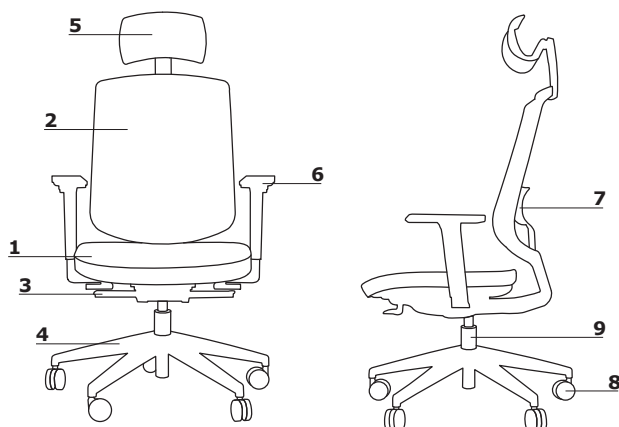
Assembly:

product delivered in separate elements

Packing:

cardboard

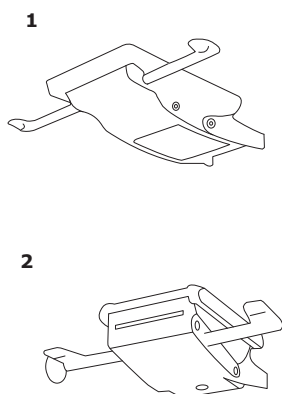
Technical specification



- max. load 120 kg

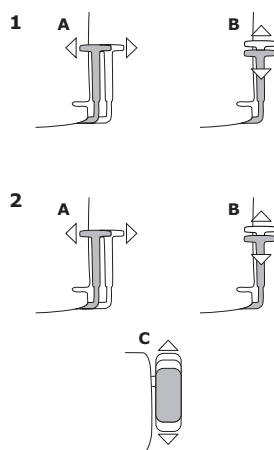
1. **Seat** - upholstered, sliding
2. **Backrest** - mesh in Runner colours
3. **Mechanism** - Auto Synchro; OPTION WITH EXTRA CHARGE - Synchro Pro
4. **Base** - 5-star, polypropylene, Ø=680 mm, h=124 mm; OPTION WITH EXTRA CHARGE - 5-star, polished aluminium, Ø=680 mm, h=124 mm
5. **OPTION WITH EXTRA CHARGE** - headrest - black mesh
6. **OPTIONS WITH EXTRA CHARGE:**
 - armrest 2D - V3 - polyurethane, colour: black
 - armrest 3D - V3 - polyurethane, colour: black
7. **OPTION WITH EXTRA CHARGE** - manual height adjustable (60 mm) lumbar support
8. **Castors** - Ø65 mm, for soft floors PP+PA, colour: black; OPTION WITH EXTRA CHARGE - for hard floors PP+PA, colour: black
9. **Actuator** - steal gas spring; adjustment range 100 mm; colour: chrome or black

Mechanism



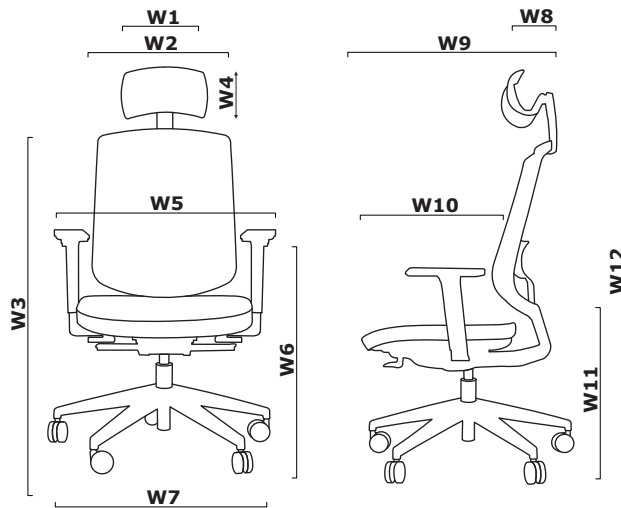
1. **AUTO SYNCHRO:**
 - synchronized automated regulation chair back press mechanism
 - designed for usage 45 and 120kg
 - allows the backrest to tilt from 0° to 18° and the seat to tilt from 0° to 4,5° at the same time
 - it is possible to lock the backrest only in the 0° position
 - seat depth adjustment range 100 mm, possibility to lock in 11 different positions
2. **SYNCHRO PRO:**
 - tilt angle of the backrest 25° and the seat 10°
 - designed for usage 45 and 120kg
 - additional seat and backrest tilt of 3°
 - 3 blocking positions of the backrest
 - Anti - shock system
 - adjustment of lateral tension
 - seat depth adjustment range 100 mm, possibility to lock in 11 different positions

Armrests



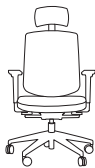
1. **Adjustable armrest - 2D-V3**
 - width adjustment (A)
 - height adjustment (B)
2. **Adjustable armrest - 3D-V3**
 - width adjustment (A)
 - height adjustment (B)
 - depth adjustment (width adjustment inwards) (C)

Dimensions



W1 - 300 | W2 - 455 | W3 - 980-1080, 1050-1150 (Auto Synchro) | W4 - 150 | W5 - 640-750 | W6 - 620-720, 615-715 (Auto Synchro) | W7 - 660 | W8 - 150 | W9 - 610 | W10 - 440-500, 410-470 (Auto Synchro) | W11 - 460-560, 445-545 (Auto Synchro) | W12 - 1160-1350, 1145-1335 (Auto Synchro)|

Sava *



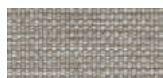
SAVA

660 / 610 / 1160-1350
20 kg

* dimensions expressed in millimeters: width x depth x height

Sava	Date of preparation 02.12.2019	The data contained in this document is valid in the day of its preparation. Change of the product, as long as it does not affect the basic features of it, does not require consistent updates of the document.	page 5/9
			products

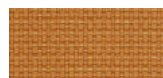
Fabric Nemo



NE-1 Beige



NE-2 Yellow



NE-3 Orange



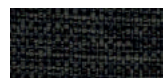
NE-5 Red



NE-9 Green



NE-10 Grey



NE-14 Graphite



NE-15 Navy blue



NE-16 Black

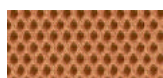


NE-17 Blue

Technical data:

Material	polyester 100%
Fabric weight	366g/m ²
Abrasion resistance rubs	PN-EN ISO 12947 - 2:2 100,000
Pilling resistance	scale 1-8, max. 8, PN-EN ISO 105 - B02 (3-4)
Colour fastness to light	scale 1-5, max. 5, PN-EN 1021 - 2,
Colour fastness to rubbing	PN-EN 1021 - 1
	skale 1-5, max. 5, EN ISO 105x12
	(wet/dry) 4-5

Fabric Runner - second price group



R-63034 Orange



R-64089 Red



R-66063 Blue



R-60011 Grey



R-68056 Green

R-66064 Navy
Blue

R-60999 Black

R-60025
Graphite

R-61128 Beige

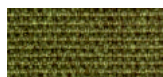
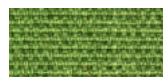


R-61130 Brown

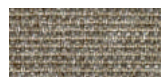
Technical data:

Material	polyester 100%
Fabric weight	510 g/lm (16.45 oz/lin.yd.)
Abrasion resistance rubs	BS EN ISO 12947-2 70,000 Martindale cycles
Pilling resistance	scale 1-5, max 5, EN ISO 12945-2 (4-5)
Colour fastness to light	scale 1-8, max 8, EN ISO 105-B02 (5-7)
Colour fastness to rubbing	scale 1-5, max 5, EN ISO 105x12 (wet/dry) 4-5
Acoustic test sound absorption	ISO 354
Flammability	BS EN 1021-2 Match, CA TB 117-2013, BS EN 1021-1 (cigarette) Class Uno UNI 9175 Class 2, EMME

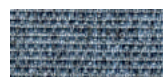
Fabric Medley - second price group

M-68005 Dark
oliveM-68002 Light
olive

M-68115 Green



M-61002 Beige

M-67053 Navy
blueM-67006 Light
blue

M-66008 Grey



M-64019 Red



M-63064 Pink



M-60999 Black

Technical data:

Material	polyester 100%
Fabric weight	510 g/lm (16.45 oz/lin.yd.)
Abrasion resistance rubs	BS EN ISO 12947-2, 75,000 cykli Martindale
Pilling resistance	scale 1-5, max. 5, EN ISO 12945-2 (4)
Colour fastness to light	scale 1-8, max. 8, EN ISO 105-B02 (5-7)
Colour fastness to rubbing	scale 1-5, max. 5, EN ISO 105x12 (wet/dry) (4-5/4-5)
Acoustic test sound absorption	ISO 354
Flammability	BS EN 1021-1 (cigarette) BS 476 Part 7, Class 2 Class Uno UNI 9174 - UNI 8457 CA TB 117-2013 ASTM E 84 Class I

Fabric Atlantic* – second price group



Technical data:

Material	polyester 100%
Fabric weight	530 g/lm (17.09 oz/lin.yd.)
Abrasion resistance rubs	BS EN ISO 12947-2, 110,000 Martindale cycles
Pilling resistance	scale 1-5, max. 5, EN ISO 12945-2 (4-5)
Colour fastness to light	scale 1-8, max. 8, EN ISO 105-B02 (5-7)
Colour fastness to rubbing	scale 1-5, max. 5, EN ISO 105x12 (wet/dry)
Flammability	CA TB 117-2013 ASTM E 84 Class I BS EN 1021-2 (match) BS EN 1021-1 (cigarette)

Fabric Vita – second price group



Technical data:

Material	Surface: 98,5% PVC, 1,5% PU Substrate: 50% polyester, 50% Cotton
Fabric weight	850g/m2 ± 10% (1190G/lin. m ± 10%)
Abrasion resistance rubs	BS EN ISO 5470-2, 100,000 Martindale cycles
Colour fastness to light	6 (ISO 105 - B02)
Colour fastness to rubbing	wet: 4, dry: 4 (ISO 105 - X12)
Flammability	BS EN 1021 - (cigarette) BS EN 1021 - 2 (match) BS 5852 - (Ignition Source 5) BS 7176 - (Medium Hazard)
Flexes	BS EN ISO 7854 - Method B, 400.000 Flexing cycles
Anti-microbial / Anti-fungal	AATCC 147

Fabric River – second price group



Technical data:

Material	polyester 100%
Fabric weight	300g/m2 (+/- 5%)
Abrasion resistance rubs	100,000 Martindale cycles (EN ISO 12947-1,2)
Pilling resistance	EN ISO 12945-2 (5)
Colour fastness to light	4 (EN ISO 105-B02)
Colour fastness to rubbing	dry: 4-5, wet: 3 (EN ISO 105-x12)
Flammability	BS 5852: Part 1, Ignition Source 0 (cigarette) BS 5852: Part 1, Ignition Source 1 (match) En1021 - 2

* There is a possibility of ordering the product in full colour spectrum of Atlantic range, as per Gabriel's pattern book, within 8 weeks

Fabric Xtreme – third price group



Technical data:

Material	100% Trevira Clame (CS) 100% Recykling (YS) Flame Retardant polyester. Non metallic dyestuffs.
Fabric weight	310 g/m2 ±5% (435g/lin.m ±5%)
Abrasion resistance rubs	60,000 Martindale cycles (CS) 100,000 Martindale cycles (YS)
Colour fastness to light	6 (ISO 105 – B02)
Colour fastness to rubbing	wet: 4, dry: 4 (ISO 105 – X12)
Flammability	EN 1021 – 1 (cigarette), EN 1021 – 2 (match) BS 7176 Low Hazard, NF P92-507 M1, DIN 4102 B1, UNI 9175 Class 1 IM, UNI 8456, UNI 9174 & UNI 9177 Classe Uno, ÖNORM B 3825 & A 3800-1 NF D 60-013

Fabric Synergy – third price group



Technical data:

Material	95% Virgin Wool, 5% Poliamid
Fabric weight	400g/m2 ±5% (560 g/lin.m ±5%)
Abrasion resistance rubs	Independently certified ≥100,000 Martindale cycles
Colour fastness to light	5 (ISO 105 – B02)
Colour fastness to rubbing	ISO 105 – X12 – wet: 4, dry: 4
Flammability	EN 1021 – 1 (cigarette), EN 1021 – 2 (match), BS 7176 Low Hazard, UNI 9175 Classe 1 IM, ÖNORM B 3825 & A 3800-1

Fabric Atlas – fourth price group



Technical data:

Material	90% new wool, 10% nylon
Fabric weight	286g/m2, 400g/1m
Abrasion resistance rubs	100,000 cykli Martindale, EN ISO 12947
Colour fastness to light	ISO 105 B02: 6-7
Colour fastness to rubbing	ISO 105-X12:2001, (wet/dry) 4-5/4-5
Flammability	BS EN 1021-2 Match, BS EN 1021-1 Cigarette, BS 5 5852 Crib 5, BS 5852 ignition source 3, BS 5852 Part 1, NF D 60 013, UNI 9175 1IM, US Cal. Bull. 117-2013

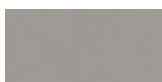
Fabric Field2 – fourth price group



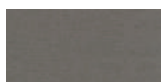
FD-463 Yellow



FD-963 Green



FD-123 Beige



FD-132 Grey



FD-142 Graphite



FD-662 Red



FD-673 Blue-red



FD-782 Navy blue



FD-693 Burgundy



FD-192 Black

Technical data:

Material	100% Trevira CS
Fabric weight	321g/m ² , 450g/lm
Abrasion resistance rubs	100,000 cykli Martindale, EN ISO 12947
Colour fastness to light	ISO 105 B02: 5-7
Flammability	BS EN 1021-2 Match, BS EN 1021-1 Cigarette, BS 5 5852 Crib 5, DIN 4102 B1 FAR 25.853, UNI 9177 classe 1, US Cal. Bull. 117-2013

Back, headrest



R-60999 Black

Armrest, castors



Black

Base



Black



Polished
aluminum *

* OPTION WITH EXTRA CHARGE