

5683 *

Side chair, upholstered shell, steel tube frame



5684 *

Armchair, upholstered shell, steel tube frame



5685 *

Armchair, upholstered shell and armrests, steel tube frame



5663

Side chair, leather shell, steel tube frame



5664

Armchair, leather shell, steel tube frame



5669 *

Side chair, leather shell, steel rod sled frame



5613

Side chair, plywood shell, steel tube frame



5614

Armchair, plywood shell, steel tube frame



5619

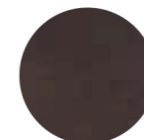
Side chair, plywood shell, steel rod sled frame



coated oak / rovere verniciato



RS
Bleached oak
Rovere sbiancato



W
Wenge
Wengé



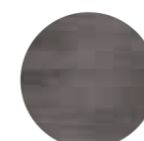
AN
Black
Nero

lacquered oak with visible grains / rovere laccato a poro aperto

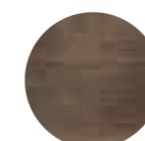
coated oak vintage finishes / rovere verniciato anticato



V101



V102



V103

fabrics / tessuti

→ see booklet for finishes
vedi catalogo finiture



steel / acciaio



CR
Chromed
Cromato



OA
Antique brass
Ottone anticato

powder coated / verniciato

→ see booklet for finishes
vedi catalogo finiture



CERTIFICATES / CERTIFICAZIONI



According to EN 16139:2013 level 2, extreme
EN di riferimento 16139:2013 livello 2, estremo



For
5613 - 5614 - 5616 - 5617