

655

Side chair, upholstered seat and backrest, black ABS shell below cover, ash wood legs



656 - 657

Side chair, upholstered seat and backrest, upholstered or black ABS shell below cover, steel tube legs



645

Armchair, upholstered seat and backrest, black ABS shell below cover, ash wood legs



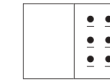
646 - 647

Armchair, upholstered seat and backrest, upholstered or black ABS shell below cover, steel tube legs



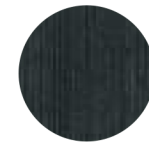
fabrics / tessuti

→ **see booklet for finishes**
vedi catalogo finiture



lacquered ash with visible grains
frassino laccato a poro aperto

coated ash
frassino verniciato



AN
Black
Nero



GC
Light grey
Grigio chiaro



FR
Bleached ash
Frassino sbiancato



N1
Light walnut
Noce chiaro

abs shell below cover
guscio sottoscocca in abs

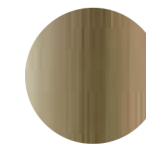
steel
acciaio



NE



ST
Satinized
Satinato



OA
Antique brass
Ottone anticato



TN
Titanium
Titanio



BS
Brushed bronze
Bronzo satinato

powder coated / verniciato

→ **see booklet for finishes**
vedi catalogo finiture



CERTIFICATES / CERTIFICAZIONI



According to EN 16139:2013 level 2, extreme
EN di riferimento 16139:2013 livello 2, estremo

