



Alfred Extendable Table

design Midj R&D, 2017



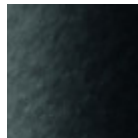
Alfred extendable table with sled base in lacquered metal. Top in crystalceramic or antiscratch glass.

Colors and Materials

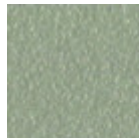
Structure



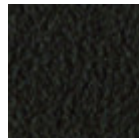
White steel



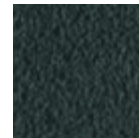
Black steel



Sand steel



Brown steel

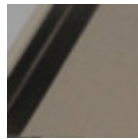


Grafite metal

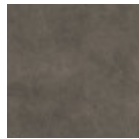
Coating



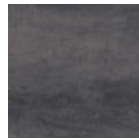
Matt graphite antiscratch glass



Matt sand antiscratch glass



Lead crystalceramic



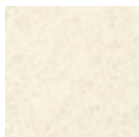
Charcoal savoia crystalceramic



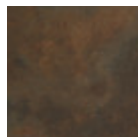
Cement savoia crystalceramic



Matt emperador marble crystalceramic



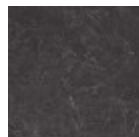
Oxide white crystalceramic



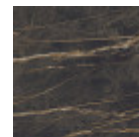
Corten crystalceramic



Glossy white calacatta marble crystalceramic

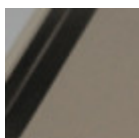


Glossy greek black marble crystalceramic

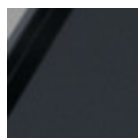


Noir desir glossy marble crystalceramic

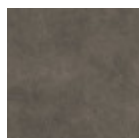
Extensions



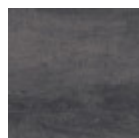
Matt sand antiscratch glass



Matt graphite antiscratch glass



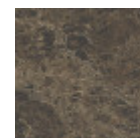
Lead crystalceramic



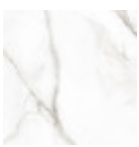
Charcoal savoia crystalceramic



Cement savoia crystalceramic



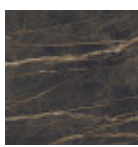
Matt emperador marble crystalceramic



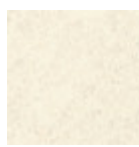
Glossy white calacatta marble crystalceramic



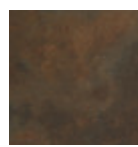
Glossy greek black marble crystalceramic



Noir desir glossy marble crystalceramic

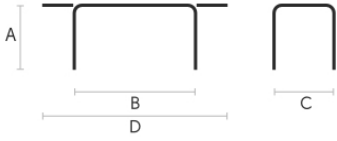


Oxide white crystalceramic



Corten crystalceramic

Dimensions



A	B	C	D
(cm)	(cm)	(cm)	(cm)
(inch)	(inch)	(inch)	(inch)

160/240x90				
(cm)	75	160	90	240
(inch)	29.5	63	35.4	94.5
200/300x100				
(cm)	76	200	100	300
(inch)	29.9	78.7	39.4	118.1

Volumetric Details

Weight 153 Kg
Volume 0.87 mc
Package 5

Downloads

3ds extendable Alfred (zip) - <https://www.midj.com/images/uploads/resources/3d-midj-alfred-ext-3ds.zip>

Materials Certifications

Matt graphite antiscratch glass

Tempered glass tops are elegant and shiny. The interaction with the surrounding light enhances their brilliance and increases their timeless charm.

Tempered glass is glass that has been subjected to a special treatment that involves gradual heating, followed by sudden air cooling. This procedure allows the transformation into a more resistant and safer glass, as, in case of breakage, it will shatter into small harmless fragments. Tops in tempered glass may have slight scratches due to sliding on the oven rollers. In addition, any dots and rings on the surface, visible in light or backlight conditions, prove that the tempera process has been carried out.

CLEANING AND MAINTENANCE

Glass tops do not require any particular maintenance, and cleaning is simple and effective. In general, for daily cleaning, use a specific microfiber cloth moistened with hot water or detergents formulated for glass surfaces. For stubborn stains, use non-abrasive cleaning products or detergents. To remove any dried residues deposited on the surface, proceed with the use of a wooden or plastic scraper. Do not use rough or abrasive sponges. For all tops we recommend avoiding direct contact with sharp or pointed tools, as well as avoid placing very cold or very hot containers directly on the glass tops.

These tips are cleaning recommendations and do not guarantee complete stain removal.

We recommend that you always test the cleaning method on a hidden part of the item to check the resistance of the material.

Colour samples are to be considered approximate for each product. Slight color differences between a lot and the other are to be considered normal.

Materials Certifications

Matt sand antiscratch glass

Tempered glass tops are elegant and shiny. The interaction with the surrounding light enhances their brilliance and increases their timeless charm.

Tempered glass is glass that has been subjected to a special treatment that involves gradual heating, followed by sudden air cooling. This procedure allows the transformation into a more resistant and safer

MIDJ



Alfred Table

design Midj R&D, 2017

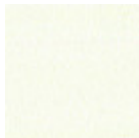
Alfred fixed table with sled base in lacquered steel available in different sizes. Top in crystalceramic or solid wood.

Wooden top available for the 200x106 (78.7x41.7 in) cm and 250x106 cm (98.4x41.7 in) versions.

Rectangular top with rounded corners for the 220x116 cm (86.6x45.7 in) and 250x120 cm (98.4x47.2 in) versions.

Colors and Materials

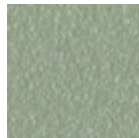
Structure



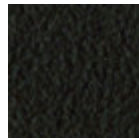
White steel



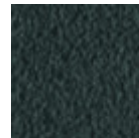
Black steel



Metallo corda

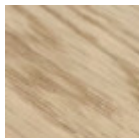


Brown steel

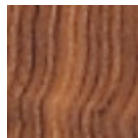


Grafite metal

Coating



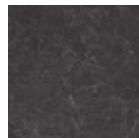
Solid oak straight edge



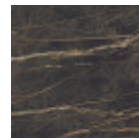
Solid walnut bark edge



Glossy white calacatta marble crystalceramic

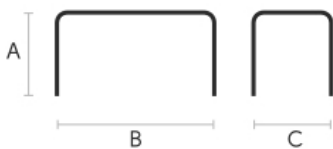


Glossy greek black marble crystalceramic



Noir desir glossy marble crystalceramic

Dimensions



	A (cm) (inch)	B (cm) (inch)	C (cm) (inch)
200x106 ceramic (cm)	73	200	106
(inch)	28.7	78.7	41.7
200x106 wood (cm)	76	200	106
(inch)	29.9	78.7	41.7
250x106 (cm)	75	250	106
(inch)	29.5	98.4	41.7

	A (cm) (inch)	B (cm) (inch)	C (cm) (inch)
220x116 barrel (cm) (inch)	75 29.5	220 86.6	116 45.7
250x120 barrel (cm) (inch)	75 29.5	250 98.4	120 47.2

Volumetric Details

Weight 164 Kg

Volume 0.69 mc

Package 4

Materials Certifications

Solid oak straight edge

FEATURES AND PLUS

Solid wood tops are obtained from the trunk of the tree, in particular from the heartwood, or the inner part (the less young one). Each top has unique characteristics in terms of veins and knots due to the natural origin of the material. To reach the widths necessary for the realization of a top for domestic use, several floorboards/strips are joined together in an effort to maintain the greater possible uniformity.

MAINTENANCE

For the regular cleaning schedule of Solid woos tops, use a wet sponge with mild soap diluted in water or specific products. Dry after each application with a cloth or absorbent paper. Do not use abrasive products. In case of accidental release of liquid substances, dab immediately the surface with absorbent paper or a dry, clean cloth. Avoid proximity to heat sources. Expose the solid wood surfaces to light, for example by opening periodically the extensions of the tables that are placed inside the structures, or by moving any objects such as vases and accessories generally resting on the top.

Materials Certifications

Glossy white calacatta marble crystalceramic

Crystalceramic combines elegance and resistance. Crystalceramic tops are composed of two sheets joined together: the lower layer is made of tempered glass, the upper layer of ceramic (porcelain stoneware).

Once joined together, the sheets give life to an extremely resistant top, suitable for placement in highly used environments. The properties that the crystalceramic tops include are high water repellency, heat resistance, scratch resistance and high durability.

CLEANING AND MAINTENANCE

For daily cleaning we recommend using a microfiber cloth, moistened with hot water and possibly neutral detergents, making sure to rinse them in case of use. Do not use abrasive scourers or cleaners. To remove any dried residues deposited on the surface, proceed with the use of a wooden or plastic scraper. Some types of stains, if not promptly removed, could leave a more or less visible permanent ring. In case of contact with acidic liquids (such as pure lemon juice) or highly pigmented liquids (such as red wine, coffee, Coke) remove promptly and rinse with a damp and clean cloth. The persistence of the stain over time hinders its complete removal. It is possible to use bleach to remove the most stubborn stains: with a damp cloth rub the surface for a few seconds. Most of the stains will no longer be visible within 2-3 minutes of application, then rinse with water and dry.

These tips are cleaning recommendations and do not guarantee complete stain removal.

We recommend that you always test the cleaning method on a hidden part of the item to check the resistance of the material.

Colour samples are to be considered approximate for each product. Slight color differences between a lot and the other are to be considered normal.

Materials Certifications

Glossy greek black marble crystalceramic

Crystalceramic combines elegance and resistance. Crystalceramic tops are composed of two sheets joined together: the lower layer is made of tempered glass, the upper layer of ceramic (porcelain stoneware).

Once joined together, the sheets give life to an extremely resistant top, suitable for placement in highly