

MIDJ



reddot winner 2021



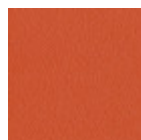
# Area P M TS Lounge Armchair

design Studio Pastina, 2021

Armchair with four-legs base in painted metal. Seat and backrest upholstered in fabric. The Area armchair is also available with armrests.

## Colors and Materials

### Structure



Papaya orange steel



Light blue metal



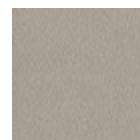
White steel



Ocean blue steel



Bronze metal



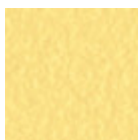
Ash grey metal



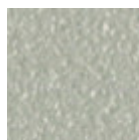
Fango steel



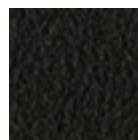
Golden yellow metal



Pastel yellow steel



Light grey steel



Brown steel



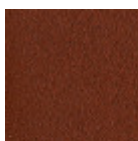
Ocher steel



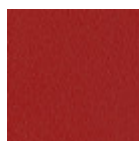
Facepowder pink metal



Red steel



Bulgaro red metal



Cherry red metal

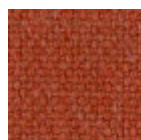
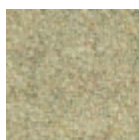
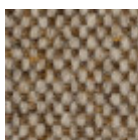
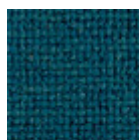
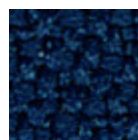


Pine green steel



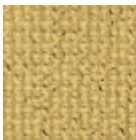
Sage green metal

### Coating

Cotton Club fabric  
14 ColorsFenix Wool fabric  
16 ColorsMain Line Flax fabric  
16 ColorsManhattan fabric  
13 ColorsMirage fabric  
15 ColorsTessuto Oceanic  
13 Colors



**Second fabric**  
11 Colors



**Yoredale fabric**  
14 Colors



**Velvet Superb**  
15 Colors

## Dimensions



	cm	inch
A	78	30.7
B	84	33
C	84	33

## Volumetric Details

**Weight** 22 Kg  
**Volume** 0.477 mc  
**Package** 1

## Downloads

- [.fbx Area P M TS \(zip\)](https://www.midj.com/images/uploads/resources/3d-midj-area-p-fbx.zip) - <https://www.midj.com/images/uploads/resources/3d-midj-area-p-fbx.zip>
- [.dwg Area P M TS \(zip\)](https://www.midj.com/images/uploads/resources/3d-midj-area-P-dwg.zip) - <https://www.midj.com/images/uploads/resources/3d-midj-area-P-dwg.zip>
- [.dxf Area P M TS \(zip\)](https://www.midj.com/images/uploads/resources/3d-midj-area-P-dxf.zip) - <https://www.midj.com/images/uploads/resources/3d-midj-area-P-dxf.zip>
- [.3dobject Area P M TS \(zip\)](https://www.midj.com/images/uploads/resources/3d-midj-area-P-3dobject.zip) - <https://www.midj.com/images/uploads/resources/3d-midj-area-P-3dobject.zip>
- [.3ds Area P M TS \(zip\)](https://www.midj.com/images/uploads/resources/3d-midj-area-P-3ds.zip) - <https://www.midj.com/images/uploads/resources/3d-midj-area-P-3ds.zip>

## Materials Certifications

### Cotton Club fabric

COMPOSITION: 70 % COT; 10% PES; 10% ACR; 10% AF  
Abrasion resistance (Martindale) 100.000 cycles

Cotton Club by Flukso is a fabric made from latest generation regenerated cotton yarns. To create this fabric, specific fixing techniques were used, that give it and help maintaining a natural, slightly wavy and vibrated look.

### CLEANING AND MAINTENANCE

Regular cleaning is important to extend the life of the coating, and keep its appearance unchanged. Dust and dirt can wear out the coating.

REGULAR CLEANING: vacuum frequently, at least once a week, at a power equal to half the device in use, choosing a smooth spout, without brushing.

STAIN REMOVAL: in case of slight stains, promptly clean the surface. Remove excess liquids or hard parts of dirt with a clean cloth, then proceed on the residue of the stain with a damp cloth or a neutral soap solution.

Remove the stain starting from the edge of the stain moving towards the center of it, then rinse with water. Let dry, avoiding direct exposure to sunlight.

For localized and more persistent stains, promptly dissolve the stain with colorless ethyl alcohol diluted in 20% water, gently rub and then treat with a neutral soap solution, then rinse well. Do not use bleach.

These tips are cleaning recommendations and do not guarantee complete stain removal. In case of large stains, we recommend contacting an operator specialized in upholstered products cleaning.

We recommend to not expose light colored coating for a prolonged time to garments treated with colors with poor dyeing fastness, as the color pigments could penetrate the surface of the fabric, without being able to be removed.

We recommend to always test the cleaning method on a hidden part of the item to check the color resistance.

Slight color differences between a lot and the other are to be considered normal.

MIDJ®



reddot winner 2021



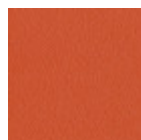
# Area P\_BR M TS Lounge Armchair

design Studio Pastina, 2021

Area armchair with four-legs base in painted metal. Seat and backrest upholstered in fabric. The Area armchair is also available in the version without armrests.

## Colors and Materials

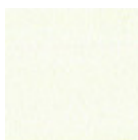
### Structure



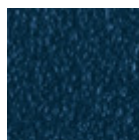
Papaya orange steel



Light blue metal



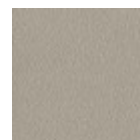
White steel



Ocean blue steel



Bronze metal



Ash grey metal



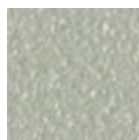
Fango steel



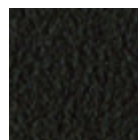
Golden yellow metal



Pastel yellow steel



Light grey steel



Brown steel



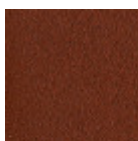
Ocher steel



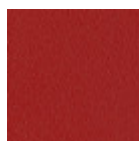
Facepowder pink metal



Red steel



Bulguro red metal



Cherry red metal

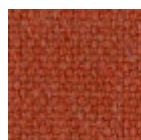
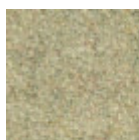
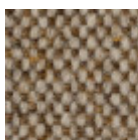
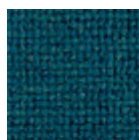
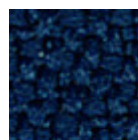
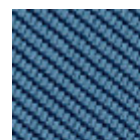


Pine green steel



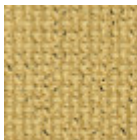
Sage green metal

### Coating

Cotton Club fabric  
14 ColorsFenix Wool fabric  
16 ColorsMain Line Flax fabric  
16 ColorsManhattan fabric  
13 ColorsMirage fabric  
15 ColorsTessuto Oceanic  
13 Colors



**Second fabric**  
11 Colors



**Yoredale fabric**  
14 Colors



**Velvet Superb**  
15 Colors

## Dimensions



	cm	inch
A	78	30.7
B	104	41
C	84	33

## Volumetric Details

**Weight** 30 Kg  
**Volume** 0.562 mc  
**Package** 1

## Downloads

- [.fbx Area P BR M TS \(zip\)](https://www.midj.com/images/uploads/resources/3d-midj-area-p-br-fbx.zip) - <https://www.midj.com/images/uploads/resources/3d-midj-area-p-br-fbx.zip>
- [.3ds Area P BR M TS \(zip\)](https://www.midj.com/images/uploads/resources/3d-midj-area-PBR-3ds.zip) - <https://www.midj.com/images/uploads/resources/3d-midj-area-PBR-3ds.zip>
- [.3dobject Area P BR M TS \(zip\)](https://www.midj.com/images/uploads/resources/3d-midj-area-PBR-3dobject.zip) - <https://www.midj.com/images/uploads/resources/3d-midj-area-PBR-3dobject.zip>
- [.dwg Area P BR M TS \(zip\)](https://www.midj.com/images/uploads/resources/3d-midj-area-PBR-dwg.zip) - <https://www.midj.com/images/uploads/resources/3d-midj-area-PBR-dwg.zip>
- [.dxf Area P BR M TS \(zip\)](https://www.midj.com/images/uploads/resources/3d-midj-area-PBR-dxf.zip) - <https://www.midj.com/images/uploads/resources/3d-midj-area-PBR-dxf.zip>

## Materials Certifications

### Cotton Club fabric

COMPOSITION: 70 % COT; 10% PES; 10% ACR; 10% AF  
Abrasion resistance (Martindale) 100.000 cycles

Cotton Club by Flukso is a fabric made from latest generation regenerated cotton yarns. To create this fabric, specific fixing techniques were used, that give it and help maintaining a natural, slightly wavy and vibrated look.

### CLEANING AND MAINTENANCE

Regular cleaning is important to extend the life of the coating, and keep its appearance unchanged. Dust and dirt can wear out the coating.

REGULAR CLEANING: vacuum frequently, at least once a week, at a power equal to half the device in use, choosing a smooth spout, without brushing.

STAIN REMOVAL: in case of slight stains, promptly clean the surface. Remove excess liquids or hard parts of dirt with a clean cloth, then proceed on the residue of the stain with a damp cloth or a neutral soap solution.

Remove the stain starting from the edge of the stain moving towards the center of it, then rinse with water. Let dry, avoiding direct exposure to sunlight.

For localized and more persistent stains, promptly dissolve the stain with colorless ethyl alcohol diluted in 20% water, gently rub and then treat with a neutral soap solution, then rinse well. Do not use bleach.

These tips are cleaning recommendations and do not guarantee complete stain removal. In case of large stains, we recommend contacting an operator specialized in upholstered products cleaning.

We recommend to not expose light colored coating for a prolonged time to garments treated with colors with poor dyeing fastness, as the color pigments could penetrate the surface of the fabric, without being able to be removed.

We recommend to always test the cleaning method on a hidden part of the item to check the color resistance.

Slight color differences between a lot and the other are to be considered normal.