

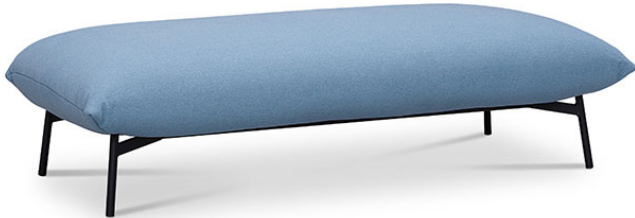


reddot winner 2021

Area B2 M TS

design Studio Pastina, 2021

Two-seat pouf with four legs in painted steel. Cushion upholstered in fabric. The Area pouf is also available in the single version, for one seat.

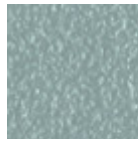


Colors and Materials

Structure



Papaya orange steel



Light blue metal



White steel



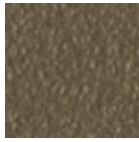
Ocean blue steel



Bronze metal



Ash grey metal



Fango steel



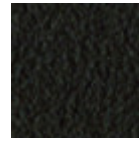
Golden yellow metal



Pastel yellow steel



Light grey steel



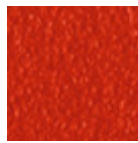
Brown steel



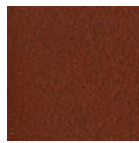
Ocher steel



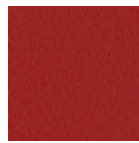
Facepowder pink metal



Red steel



Bulgaro red metal



Cherry red metal

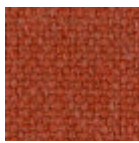


Pine green steel

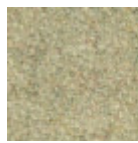


Sage green metal

Coating



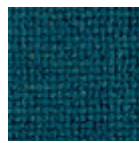
Cotton Club fabric
14 Colors



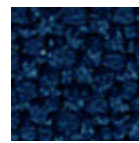
Fenix Wool fabric
16 Colors



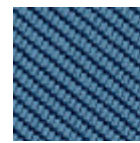
Main Line Flax fabric
16 Colors



Manhattan fabric
13 Colors



Mirage fabric
15 Colors



Tessuto Oceanic
13 Colors



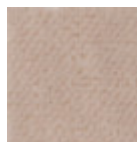
Second fabric

11 Colors



Yoredale fabric

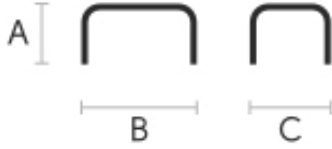
14 Colors



Velvet Superb

15 Colors

Dimensions



	A (cm)	B (cm)	C (cm)
	(inch)	(inch)	(inch)
B2 M TS	45	164	75
(cm)	17.7	64.6	29.5
(inch)			
B1 M TS	45	85	75
(cm)	17.7	33.5	29.5
(inch)			

Volumetric Details

Weight 27 Kg

Volume 0.657 mc

Package 1

Downloads

[.fbx Area B2 M TS \(zip\)](https://www.midj.com/images/uploads/resources/3d-midj-area-B2-fbx.zip) - <https://www.midj.com/images/uploads/resources/3d-midj-area-B2-fbx.zip>

[.3dobject Area B2 M TS \(zip\)](https://www.midj.com/images/uploads/resources/3d-midj-area-B2-3dobject.zip) - <https://www.midj.com/images/uploads/resources/3d-midj-area-B2-3dobject.zip>

[.3ds Area B2 M TS \(zip\)](https://www.midj.com/images/uploads/resources/3d-midj-area-B2-3ds.zip) - <https://www.midj.com/images/uploads/resources/3d-midj-area-B2-3ds.zip>

[.dwg Area B2 M TS \(zip\)](https://www.midj.com/images/uploads/resources/3d-midj-area-B2-dwg.zip) - <https://www.midj.com/images/uploads/resources/3d-midj-area-B2-dwg.zip>

[.dxf Area B2 M TS \(zip\)](https://www.midj.com/images/uploads/resources/3d-midj-area-B2-dxf.zip) - <https://www.midj.com/images/uploads/resources/3d-midj-area-B2-dxf.zip>

Materials Certifications

Cotton Club fabric

COMPOSITION: 70 % COT; 10% PES; 10% ACR; 10% AF

Abrasion resistance (Martindale) 100.000 cycles

Cotton Club by Flukso is a fabric made from latest generation regenerated cotton yarns. To create this fabric, specific fixing techniques were used, that give it and help maintaining a natural, slightly wavy and vibrated look.

CLEANING AND MAINTENANCE

Regular cleaning is important to extend the life of the coating, and keep its appearance unchanged. Dust and dirt can wear out the coating.

REGULAR CLEANING: vacuum frequently, at least once a week, at a power equal to half the device in use, choosing a smooth spout, without brushing.

STAIN REMOVAL: in case of slight stains, promptly clean the surface. Remove excess liquids or hard parts of dirt with a clean cloth, then proceed on the residue of the stain with a damp cloth or a neutral soap solution.

Remove the stain starting from the edge of the stain moving towards the center of it, then rinse with water. Let dry, avoiding direct exposure to sunlight.

For localized and more persistent stains, promptly dissolve the stain with colorless ethyl alcohol diluted in 20% water, gently rub and then treat with a neutral soap solution, then rinse well. Do not use bleach.

These tips are cleaning recommendations and do not guarantee complete stain removal. In case of large stains, we recommend contacting an operator specialized in upholstered products cleaning.

We recommend to not expose light colored coating for a prolonged time to garments treated with colors with poor dyeing fastness, as the color pigments could penetrate the surface of the fabric, without being able to be removed.

We recommend to always test the cleaning method on a hidden part of the item to check the color



reddot winner 2021

Area B1 M TS

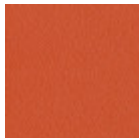
design Studio Pastina, 2021

Pouf with four-legs base in lacquered steel. Soft cushion upholstered with fabric. The Area pouf is also available in two-seats version.



Colors and Materials

Structure



Papaya orange steel



Light blue metal



White steel



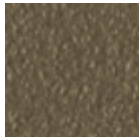
Ocean blue steel



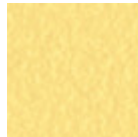
Bronze metal



Ash grey metal



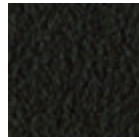
Fango steel



Pastel yellow steel



Light grey steel



Brown steel



Ocher steel



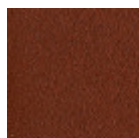
Facepowder pink metal



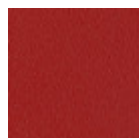
Golden yellow metal



Red steel



Bulgaro red metal



Cherry red metal

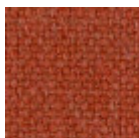


Pine green steel

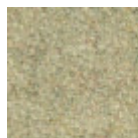


Sage green metal

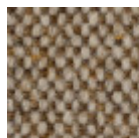
Coating



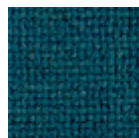
Cotton Club fabric
14 Colors



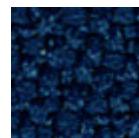
Fenix Wool fabric
16 Colors



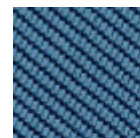
Main Line Flax fabric
16 Colors



Manhattan fabric
13 Colors



Mirage fabric
15 Colors

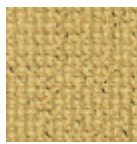


Tessuto Oceanic
13 Colors



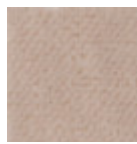
Second fabric

11 Colors



Yoredale fabric

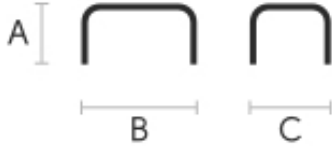
14 Colors



Velvet Superb

15 Colors

Dimensions



	A (cm)	B (cm)	C (cm)
	(inch)	(inch)	(inch)
B1 (cm)	45	85	75
(inch)	17.7	33.5	29.5
B2 (cm)	45	164	75
(inch)	17.7	64.6	29.5

Volumetric Details

Weight 15 Kg

Volume 0.35 mc

Package 1

Downloads

[.fbx Area B1 M TS \(zip\)](https://www.midj.com/images/uploads/resources/3d-midj-area-B1-fbx.zip) - <https://www.midj.com/images/uploads/resources/3d-midj-area-B1-fbx.zip>

[.3Dobject Area B1 M TS \(zip\)](https://www.midj.com/images/uploads/resources/3d-midj-area-B1-3dobject.zip) - <https://www.midj.com/images/uploads/resources/3d-midj-area-B1-3dobject.zip>

[.3DS Area B1 M TS \(zip\)](https://www.midj.com/images/uploads/resources/3d-midj-area-B1-3ds.zip) - <https://www.midj.com/images/uploads/resources/3d-midj-area-B1-3ds.zip>

[.dwg Area B1 M TS \(zip\)](https://www.midj.com/images/uploads/resources/3d-midj-area-B1-dwg.zip) - <https://www.midj.com/images/uploads/resources/3d-midj-area-B1-dwg.zip>

[.dxf Area B1 M TS \(zip\)](https://www.midj.com/images/uploads/resources/3d-midj-area-B1-dxf.zip) - <https://www.midj.com/images/uploads/resources/3d-midj-area-B1-dxf.zip>

Materials Certifications

Cotton Club fabric

COMPOSITION: 70 % COT; 10% PES; 10% ACR; 10% AF

Abrasion resistance (Martindale) 100.000 cycles

Cotton Club by Flukso is a fabric made from latest generation regenerated cotton yarns. To create this fabric, specific fixing techniques were used, that give it and help maintaining a natural, slightly wavy and vibrated look.

CLEANING AND MAINTENANCE

Regular cleaning is important to extend the life of the coating, and keep its appearance unchanged. Dust and dirt can wear out the coating.

REGULAR CLEANING: vacuum frequently, at least once a week, at a power equal to half the device in use, choosing a smooth spout, without brushing.

STAIN REMOVAL: in case of slight stains, promptly clean the surface. Remove excess liquids or hard parts of dirt with a clean cloth, then proceed on the residue of the stain with a damp cloth or a neutral soap solution.

Remove the stain starting from the edge of the stain moving towards the center of it, then rinse with water. Let dry, avoiding direct exposure to sunlight.

For localized and more persistent stains, promptly dissolve the stain with colorless ethyl alcohol diluted in 20% water, gently rub and then treat with a neutral soap solution, then rinse well. Do not use bleach.

These tips are cleaning recommendations and do not guarantee complete stain removal. In case of large stains, we recommend contacting an operator specialized in upholstered products cleaning.

We recommend to not expose light colored coating for a prolonged time to garments treated with colors with poor dyeing fastness, as the color pigments could penetrate the surface of the fabric, without being able to be removed.

We recommend to always test the cleaning method on a hidden part of the item to check the color resistance.