

MIDJ



reddot winner 2021

Area DV2_BR M TS Sofa

design Studio Pastina, 2021

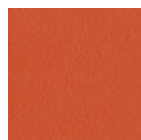


Two-seat sofa with painted metal legs. Seat and backrest upholstered in fabric. The Area sofa is also available in the version without armrests.

Area is a collection available in different sizes, in the sofa, armchair and pouf version, to meet any need on interior decoration.

Colors and Materials

Structure



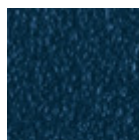
Papaya orange steel



Light blue metal



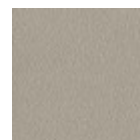
White steel



Ocean blue steel



Bronze metal



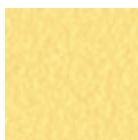
Ash grey metal



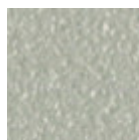
Fango steel



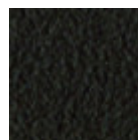
Golden yellow metal



Pastel yellow steel



Light grey steel



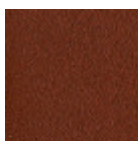
Brown steel



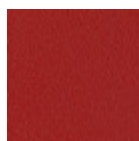
Ocher steel

Facepowder pink
metal

Red steel



Bulguro red metal



Cherry red metal

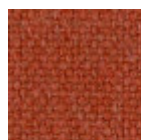
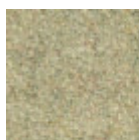
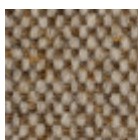
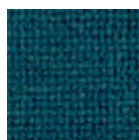
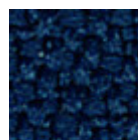
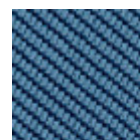


Pine green steel



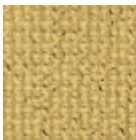
Sage green metal

Coating

Cotton Club fabric
14 ColorsFenix Wool fabric
16 ColorsMain Line Flax fabric
16 ColorsManhattan fabric
13 ColorsMirage fabric
15 ColorsTessuto Oceanic
13 Colors



Second fabric
11 Colors



Yoredale fabric
14 Colors



Velvet Superb
15 Colors

Dimensions



	cm	inch
A	78	30.7
B	180	70.9
C	84	33

Volumetric Details

Weight 46 Kg
Volume 0.991 mc
Package 1

Downloads

- [.fbx Area DV2_BR M TS \(zip\)](https://www.midj.com/images/uploads/resources/3d-midj-area-dv2-br-fbx.zip) - <https://www.midj.com/images/uploads/resources/3d-midj-area-dv2-br-fbx.zip>
- [.3dsobject Area DV2_BR M TS \(zip\)](https://www.midj.com/images/uploads/resources/3d-midj-area-DV2BR-3dobject.zip) - <https://www.midj.com/images/uploads/resources/3d-midj-area-DV2BR-3dobject.zip>
- [.3ds Area DV2_BR M TS \(zip\)](https://www.midj.com/images/uploads/resources/3d-midj-area-DV2BR-3ds.zip) - <https://www.midj.com/images/uploads/resources/3d-midj-area-DV2BR-3ds.zip>
- [.dwg Area DV2_BR M TS \(zip\)](https://www.midj.com/images/uploads/resources/3d-midj-area-DV2BR-dwg.zip) - <https://www.midj.com/images/uploads/resources/3d-midj-area-DV2BR-dwg.zip>
- [.dxf Area DV2_BR M TS \(zip\)](https://www.midj.com/images/uploads/resources/3d-midj-area-DV2BR-dxf.zip) - <https://www.midj.com/images/uploads/resources/3d-midj-area-DV2BR-dxf.zip>

Materials Certifications

Cotton Club fabric

COMPOSITION: 70 % COT; 10% PES; 10% ACR; 10% AF
Abrasion resistance (Martindale) 100.000 cycles

Cotton Club by Flukso is a fabric made from latest generation regenerated cotton yarns. To create this fabric, specific fixing techniques were used, that give it and help maintaining a natural, slightly wavy and vibrated look.

CLEANING AND MAINTENANCE

Regular cleaning is important to extend the life of the coating, and keep its appearance unchanged. Dust and dirt can wear out the coating.

REGULAR CLEANING: vacuum frequently, at least once a week, at a power equal to half the device in use, choosing a smooth spout, without brushing.

STAIN REMOVAL: in case of slight stains, promptly clean the surface. Remove excess liquids or hard parts of dirt with a clean cloth, then proceed on the residue of the stain with a damp cloth or a neutral soap solution.

Remove the stain starting from the edge of the stain moving towards the center of it, then rinse with water. Let dry, avoiding direct exposure to sunlight.

For localized and more persistent stains, promptly dissolve the stain with colorless ethyl alcohol diluted in 20% water, gently rub and then treat with a neutral soap solution, then rinse well. Do not use bleach.

These tips are cleaning recommendations and do not guarantee complete stain removal. In case of large stains, we recommend contacting an operator specialized in upholstered products cleaning.

We recommend to not expose light colored coating for a prolonged time to garments treated with colors with poor dyeing fastness, as the color pigments could penetrate the surface of the fabric, without being able to be removed.

We recommend to always test the cleaning method on a hidden part of the item to check the color resistance.

Slight color differences between a lot and the other are to be considered normal.

MIDJ®



reddot winner 2021

Area DV2_DRM M TS Sofa

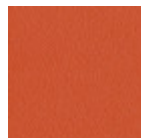
design Studio Pastina, 2021

Chaise longue with lacquered metal legs. Seat and back upholstered in fabric.

Area represents a dynamic solution to create minimal and ultra soft workstations, in a workspace capable of encouraging the sharing of ideas and energies.

Colors and Materials

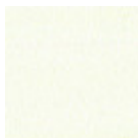
Structure



Papaya orange steel



Light blue metal



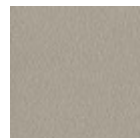
White steel



Ocean blue steel



Bronze metal



Ash grey metal



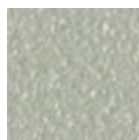
Fango steel



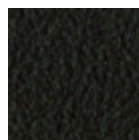
Golden yellow metal



Pastel yellow steel



Light grey steel



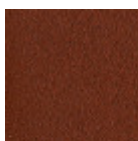
Brown steel



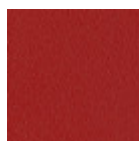
Ocher steel

Facepowder pink
metal

Red steel



Bulgaro red metal



Cherry red metal

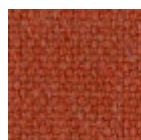
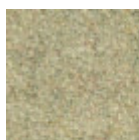
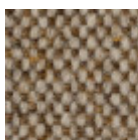
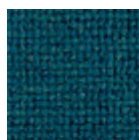
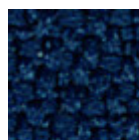


Pine green steel



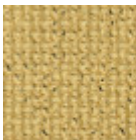
Sage green metal

Coating

Cotton Club fabric
14 ColorsFenix Wool fabric
16 ColorsMain Line Flax fabric
16 ColorsManhattan fabric
13 ColorsMirage fabric
15 ColorsTessuto Oceanic
13 Colors



Second fabric
11 Colors



Yoredale fabric
14 Colors



Velvet Superb
15 Colors

Dimensions



	cm	inch
A	78	30.7
B	170	66.9
C	84	33

Volumetric Details

Weight 40 Kg
Volume 0.937 mc
Package 1

Downloads

- [.fbx Area DV2_DRM M TS \(zip\)](https://www.midj.com/images/uploads/resources/3d-midj-area-dv2-drm-fbx.zip) - <https://www.midj.com/images/uploads/resources/3d-midj-area-dv2-drm-fbx.zip>
- [.3ds Area DV2_DRM M TS \(zip\)](https://www.midj.com/images/uploads/resources/3d-midj-area-DV2DRM-3ds.zip) - <https://www.midj.com/images/uploads/resources/3d-midj-area-DV2DRM-3ds.zip>
- [.3dobjects Area DV2_DRM M TS \(zip\)](https://www.midj.com/images/uploads/resources/3d-midj-area-DV2DRM-3dobject.zip) - <https://www.midj.com/images/uploads/resources/3d-midj-area-DV2DRM-3dobject.zip>
- [.dwg Area DV2_DRM M TS \(zip\)](https://www.midj.com/images/uploads/resources/3d-midj-area-DV2DRM-dwg.zip) - <https://www.midj.com/images/uploads/resources/3d-midj-area-DV2DRM-dwg.zip>
- [.dxf Area DV2_DRM M TS \(zip\)](https://www.midj.com/images/uploads/resources/3d-midj-area-DV2DRM-dxf.zip) - <https://www.midj.com/images/uploads/resources/3d-midj-area-DV2DRM-dxf.zip>

Materials Certifications

Cotton Club fabric

COMPOSITION: 70 % COT; 10% PES; 10% ACR; 10% AF
Abrasion resistance (Martindale) 100.000 cycles

Cotton Club by Flukso is a fabric made from latest generation regenerated cotton yarns. To create this fabric, specific fixing techniques were used, that give it and help maintaining a natural, slightly wavy and vibrated look.

CLEANING AND MAINTENANCE

Regular cleaning is important to extend the life of the coating, and keep its appearance unchanged. Dust and dirt can wear out the coating.

REGULAR CLEANING: vacuum frequently, at least once a week, at a power equal to half the device in use, choosing a smooth spout, without brushing.

STAIN REMOVAL: in case of slight stains, promptly clean the surface. Remove excess liquids or hard parts of dirt with a clean cloth, then proceed on the residue of the stain with a damp cloth or a neutral soap solution.

Remove the stain starting from the edge of the stain moving towards the center of it, then rinse with water. Let dry, avoiding direct exposure to sunlight.

For localized and more persistent stains, promptly dissolve the stain with colorless ethyl alcohol diluted in 20% water, gently rub and then treat with a neutral soap solution, then rinse well. Do not use bleach.

These tips are cleaning recommendations and do not guarantee complete stain removal. In case of large stains, we recommend contacting an operator specialized in upholstered products cleaning.

We recommend to not expose light colored coating for a prolonged time to garments treated with colors with poor dyeing fastness, as the color pigments could penetrate the surface of the fabric, without being able to be removed.

We recommend to always test the cleaning method on a hidden part of the item to check the color resistance.

Slight color differences between a lot and the other are to be considered normal.

MIDJ



reddot winner 2021

Area DV3 M TS Sofa

design Studio Pastina, 2021

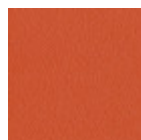


Three-seat sofa with painted metal legs. Seat and backrest upholstered in fabric. The Area sofa is also available in the version with armrests.

Designed by Studio Pastina, the Area collection combines extremely soft seating with an essential and clean design. The shape of the cushions is repeated in the construction of the seat and back. Soft and welcoming, the volumes are designed to accompany the body in a harmonious and dynamic way.

Colors and Materials

Structure



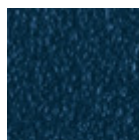
Papaya orange steel



Light blue metal



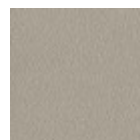
White steel



Ocean blue steel



Bronze metal



Ash grey metal



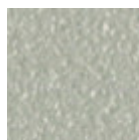
Fango steel



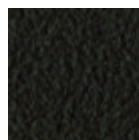
Golden yellow metal



Pastel yellow steel



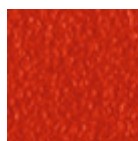
Light grey steel



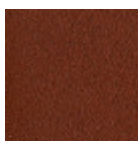
Brown steel



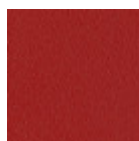
Ocher steel

Facepowder pink
metal

Red steel



Bulgaro red metal



Cherry red metal

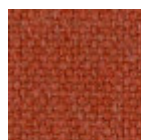
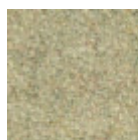
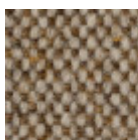
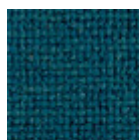
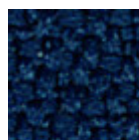


Pine green steel



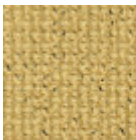
Sage green metal

Coating

Cotton Club fabric
14 ColorsFenix Wool fabric
16 ColorsMain Line Flax fabric
16 ColorsManhattan fabric
13 ColorsMirage fabric
15 ColorsTessuto Oceanic
13 Colors



Second fabric
11 Colors



Yoredale fabric
14 Colors



Velvet Superb
15 Colors

Dimensions



	cm	inch
A	78	30.7
B	240	94.5
C	84	33

Volumetric Details

Weight 64 Kg
Volume 1.296 mc
Package 1

Downloads

[.fbx Area DV3 M TS \(zip\)](https://www.midj.com/images/uploads/resources/3d-midj-area-dv3-fbx.zip) - <https://www.midj.com/images/uploads/resources/3d-midj-area-dv3-fbx.zip>

Materials Certifications

Cotton Club fabric

COMPOSITION: 70 % COT; 10% PES; 10% ACR; 10% AF
Abrasion resistance (Martindale) 100.000 cycles

Cotton Club by Flukso is a fabric made from latest generation regenerated cotton yarns. To create this fabric, specific fixing techniques were used, that give it and help maintaining a natural, slightly wavy and vibrated look.

CLEANING AND MAINTENANCE

Regular cleaning is important to extend the life of the coating, and keep its appearance unchanged. Dust and dirt can wear out the coating.

REGULAR CLEANING: vacuum frequently, at least once a week, at a power equal to half the device in use, choosing a smooth spout, without brushing.

STAIN REMOVAL: in case of slight stains, promptly clean the surface. Remove excess liquids or hard parts of dirt with a clean cloth, then proceed on the residue of the stain with a damp cloth or a neutral soap solution.

Remove the stain starting from the edge of the stain moving towards the center of it, then rinse with water. Let dry, avoiding direct exposure to sunlight.

For localized and more persistent stains, promptly dissolve the stain with colorless ethyl alcohol diluted in 20% water, gently rub and then treat with a neutral soap solution, then rinse well. Do not use bleach.

These tips are cleaning recommendations and do not guarantee complete stain removal. In case of large stains, we recommend contacting an operator specialized in upholstered products cleaning.

We recommend to not expose light colored coating for a prolonged time to garments treated with colors with poor dyeing fastness, as the color pigments could penetrate the surface of the fabric, without being able to be removed.

We recommend to always test the cleaning method on a hidden part of the item to check the color resistance.

Slight color differences between a lot and the other are to be considered normal.

Materials Certifications

Fenix Wool fabric

COMPOSITION: 75% WO, 25% PA
MARTINDALE: 100.000 cycles

MIDJ



reddot winner 2021

Area DV3_BR M TS Sofa

design Studio Pastina, 2021

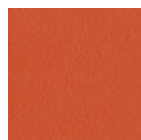


Three-seat sofa with painted metal legs. Seat and backrest upholstered in fabric. The Area sofa is also available in the version without armrests.

Designed by Studio Pastina, the Area collection combines extremely soft seating with an essential and clean design. The shape of the cushions is repeated in the construction of the seat and back. Soft and welcoming, the volumes are designed to accompany the body in a harmonious and dynamic way.

Colors and Materials

Structure



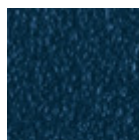
Papaya orange steel



Light blue metal



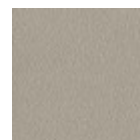
White steel



Ocean blue steel



Bronze metal



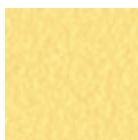
Ash grey metal



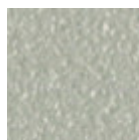
Fango steel



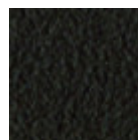
Golden yellow metal



Pastel yellow steel



Light grey steel



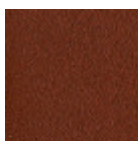
Brown steel



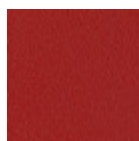
Ocher steel

Facepowder pink
metal

Red steel



Bulgaro red metal



Cherry red metal

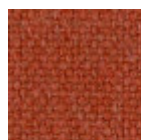
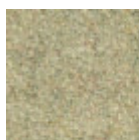
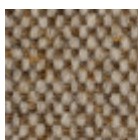
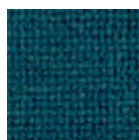
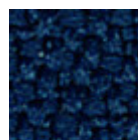
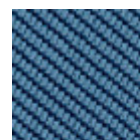


Pine green steel



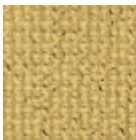
Sage green metal

Coating

Cotton Club fabric
14 ColorsFenix Wool fabric
16 ColorsMain Line Flax fabric
16 ColorsManhattan fabric
13 ColorsMirage fabric
15 ColorsTessuto Oceanic
13 Colors



Second fabric
11 Colors



Yoredale fabric
14 Colors



Velvet Superb
15 Colors

Dimensions



	cm	inch
A	78	30.7
B	260	102.4
C	84	33

Volumetric Details

Weight 72 Kg
Volume 1.403 mc
Package 1

Downloads

- [.fbx Area DV3_BR M TS \(zip\)](https://www.midj.com/images/uploads/resources/3d-midj-area-dv3-br-fbx.zip) - <https://www.midj.com/images/uploads/resources/3d-midj-area-dv3-br-fbx.zip>
- [.3ds Area DV3_BR M TS \(zip\)](https://www.midj.com/images/uploads/resources/3d-midj-area-DV3BR-3ds.zip) - <https://www.midj.com/images/uploads/resources/3d-midj-area-DV3BR-3ds.zip>
- [.3dsobject Area DV3_BR M TS \(zip\)](https://www.midj.com/images/uploads/resources/3d-midj-area-DV3BR-3dobject.zip) - <https://www.midj.com/images/uploads/resources/3d-midj-area-DV3BR-3dobject.zip>
- [.dwg Area DV3_BR M TS \(zip\)](https://www.midj.com/images/uploads/resources/3d-midj-area-DV3BR-dwg.zip) - <https://www.midj.com/images/uploads/resources/3d-midj-area-DV3BR-dwg.zip>
- [.dxf Area DV3_BR M TS \(zip\)](https://www.midj.com/images/uploads/resources/3d-midj-area-DV3BR-dxf.zip) - <https://www.midj.com/images/uploads/resources/3d-midj-area-DV3BR-dxf.zip>

Materials Certifications

Cotton Club fabric

COMPOSITION: 70 % COT; 10% PES; 10% ACR; 10% AF
Abrasion resistance (Martindale) 100.000 cycles

Cotton Club by Flukso is a fabric made from latest generation regenerated cotton yarns. To create this fabric, specific fixing techniques were used, that give it and help maintaining a natural, slightly wavy and vibrated look.

CLEANING AND MAINTENANCE

Regular cleaning is important to extend the life of the coating, and keep its appearance unchanged. Dust and dirt can wear out the coating.

REGULAR CLEANING: vacuum frequently, at least once a week, at a power equal to half the device in use, choosing a smooth spout, without brushing.

STAIN REMOVAL: in case of slight stains, promptly clean the surface. Remove excess liquids or hard parts of dirt with a clean cloth, then proceed on the residue of the stain with a damp cloth or a neutral soap solution.

Remove the stain starting from the edge of the stain moving towards the center of it, then rinse with water. Let dry, avoiding direct exposure to sunlight.

For localized and more persistent stains, promptly dissolve the stain with colorless ethyl alcohol diluted in 20% water, gently rub and then treat with a neutral soap solution, then rinse well. Do not use bleach.

These tips are cleaning recommendations and do not guarantee complete stain removal. In case of large stains, we recommend contacting an operator specialized in upholstered products cleaning.

We recommend to not expose light colored coating for a prolonged time to garments treated with colors with poor dyeing fastness, as the color pigments could penetrate the surface of the fabric, without being able to be removed.

We recommend to always test the cleaning method on a hidden part of the item to check the color resistance.

Slight color differences between a lot and the other are to be considered normal.

MIDJ



reddot winner 2021



Area DV2 M TS Sofa

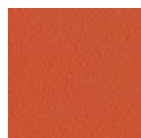
design Studio Pastina, 2021

Two-seat sofa with painted metal legs. Seat and backrest upholstered in fabric.

Area is a collection of elements available in different sizes, in the sofa, armchair and ottoman version, to meet any furnishing need.

Colors and Materials

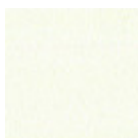
Structure



Papaya orange steel



Light blue metal



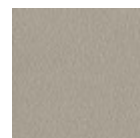
White steel



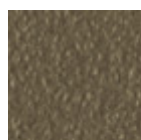
Ocean blue steel



Bronze metal



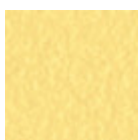
Ash grey metal



Fango steel



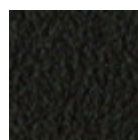
Golden yellow metal



Pastel yellow steel



Light grey steel



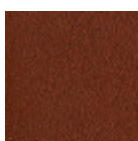
Brown steel



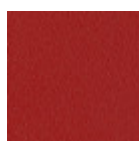
Ocher steel

Facepowder pink
metal

Red steel



Bulgaro red metal



Cherry red metal

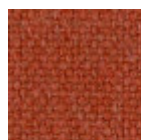
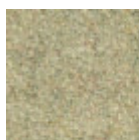
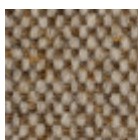
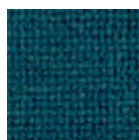
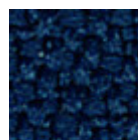
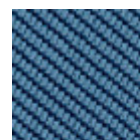


Pine green steel



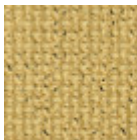
Sage green metal

Coating

Cotton Club fabric
14 ColorsFenix Wool fabric
16 ColorsMain Line Flax fabric
16 ColorsManhattan fabric
13 ColorsMirage fabric
15 ColorsTessuto Oceanic
13 Colors



Second fabric
11 Colors



Yoredale fabric
14 Colors



Velvet Superb
15 Colors

Dimensions



	cm	inch
A	78	30.7
B	160	63
C	84	33

Volumetric Details

Weight 38 Kg
Volume 0.894 mc
Package 1

Downloads

- [.fbx Area DV2 M TS \(zip\)](https://www.midj.com/images/uploads/resources/3d-midj-area-dv2-fbx.zip) - <https://www.midj.com/images/uploads/resources/3d-midj-area-dv2-fbx.zip>
- [.3ds Area DV2 M TS \(zip\)](https://www.midj.com/images/uploads/resources/3d-midj-area-DV2-3ds.zip) - <https://www.midj.com/images/uploads/resources/3d-midj-area-DV2-3ds.zip>
- [.dwg Area DV2 M TS \(zip\)](https://www.midj.com/images/uploads/resources/3d-midj-area-DV2-dwg.zip) - <https://www.midj.com/images/uploads/resources/3d-midj-area-DV2-dwg.zip>
- [.dxf Area DV2 M TS \(zip\)](https://www.midj.com/images/uploads/resources/3d-midj-area-DV2-dxf.zip) - <https://www.midj.com/images/uploads/resources/3d-midj-area-DV2-dxf.zip>

Materials Certifications

Cotton Club fabric

COMPOSITION: 70 % COT; 10% PES; 10% ACR; 10% AF
Abrasion resistance (Martindale) 100.000 cycles

Cotton Club by Flukso is a fabric made from latest generation regenerated cotton yarns. To create this fabric, specific fixing techniques were used, that give it and help maintaining a natural, slightly wavy and vibrated look.

CLEANING AND MAINTENANCE

Regular cleaning is important to extend the life of the coating, and keep its appearance unchanged. Dust and dirt can wear out the coating.

REGULAR CLEANING: vacuum frequently, at least once a week, at a power equal to half the device in use, choosing a smooth spout, without brushing.

STAIN REMOVAL: in case of slight stains, promptly clean the surface. Remove excess liquids or hard parts of dirt with a clean cloth, then proceed on the residue of the stain with a damp cloth or a neutral soap solution.

Remove the stain starting from the edge of the stain moving towards the center of it, then rinse with water. Let dry, avoiding direct exposure to sunlight.

For localized and more persistent stains, promptly dissolve the stain with colorless ethyl alcohol diluted in 20% water, gently rub and then treat with a neutral soap solution, then rinse well. Do not use bleach.

These tips are cleaning recommendations and do not guarantee complete stain removal. In case of large stains, we recommend contacting an operator specialized in upholstered products cleaning.

We recommend to not expose light colored coating for a prolonged time to garments treated with colors with poor dyeing fastness, as the color pigments could penetrate the surface of the fabric, without being able to be removed.

We recommend to always test the cleaning method on a hidden part of the item to check the color resistance.

Slight color differences between a lot and the other are to be considered normal.

Materials Certifications