



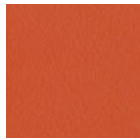
Clessidra Bistro Table

design Paolo Vernier, 2019

Clessidra bistrot table with metal base. Ring customizable choosing between the different metal finishings.

Colors and Materials

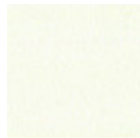
Structure



Papaya orange steel



Light blue metal



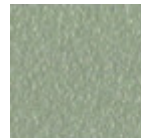
White steel



Ocean blue steel



Bronze metal



Sand steel



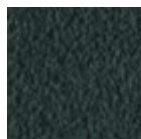
Fango steel



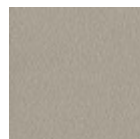
Golden yellow metal



Pastel yellow steel



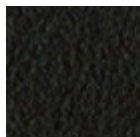
Grafite metal



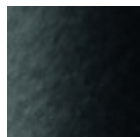
Ash grey metal



Light grey steel



Brown steel



Black steel



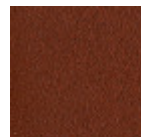
Ocher steel



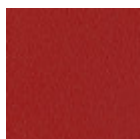
Facepowder pink metal



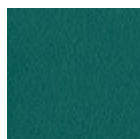
Red steel



Bulgaro red metal



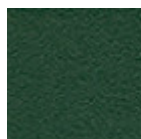
Cherry red metal



Pine green steel

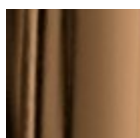


Sage green metal

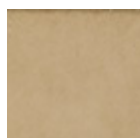


Dark green metal

Extensions



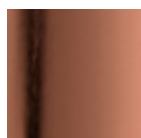
Golden bronze



Matt golden bronze



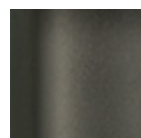
Golden champagne



Pink Gold

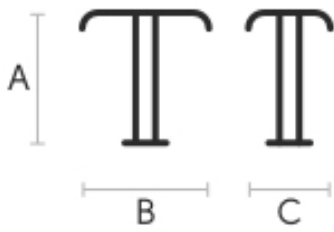


Black Nickel



Matt black nickel

Dimensions



	cm	inch
A	73	28.7
B	42	18.6
C	42	18.6

Materials Certifications

Dark green metal

The technologies used in the previous phase of powder coating play a fundamental role in the final result of the processing. They are in fact essential to increase adherence paint on the metal surface and then guarantee its duration over time. The metal frames, following a total cleaning of the surface, pass through chemical conversion processes, creating a compact base that allows for better adhesion of the subsequent treatment. In the last phase the object subjected to the powder coating process is placed in a polymerization oven, going to form an adherent and extremely tight layer durable. This particular paint job is ideal for outdoor use.

To clean the surface, use a damp microfiber cloth with neutral soap or specific metal cleaning products. Avoid hitting or rubbing the surface with sharp objects. Do not use scourers or other abrasive materials, since they would inevitably scratch the surface. Do not leave rusty iron objects on the surface for too long.

These surface treatments are not suitable for outdoor use, but they guarantee excellent resistance to frequent use, dirt and dust.



Clessidra CT Coffee Table

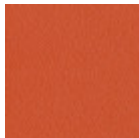
design Paolo Vernier, 2019

Clessidra Coffee Table available in three different dimensions.

Base in metal and top in MDF, metal, hide, ceramic or marble.

Colors and Materials

Structure



Papaya orange steel



Light blue metal



White steel



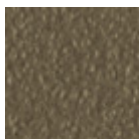
Ocean blue steel



Bronze metal



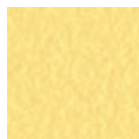
Sand steel



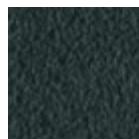
Fango steel



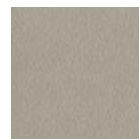
Golden yellow metal



Pastel yellow steel



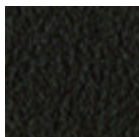
Grafite metal



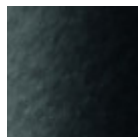
Ash grey metal



Light grey steel



Brown steel



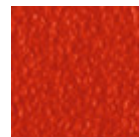
Black steel



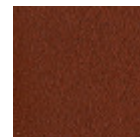
Ocher steel



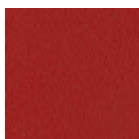
Facepowder pink metal



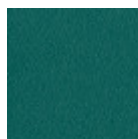
Red steel



Bulgaro red metal



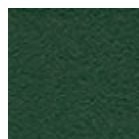
Cherry red metal



Pine green steel

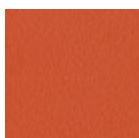


Sage green metal



Dark green metal

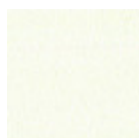
Coating



Papaya orange steel



Light blue metal



White steel



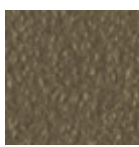
Ocean blue steel



Bronze metal



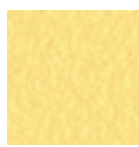
Sand steel



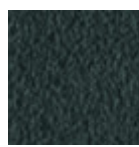
Fango steel



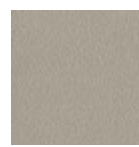
Golden yellow metal



Pastel yellow steel



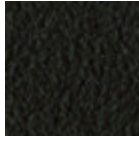
Grafite metal



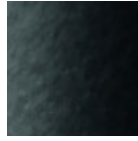
Ash grey metal



Light grey steel



Brown steel



Black steel



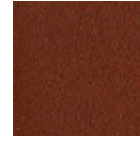
Ocher steel



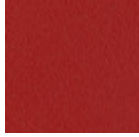
Facepowder pink metal



Red steel



Bulgaro red metal



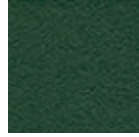
Cherry red metal



Pine green steel



Sage green metal



Dark green metal



Laquered MDF

5 Colors



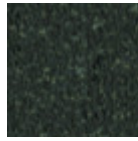
Hide

18 Colors



Tuscan hide

6 Colors



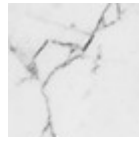
Crystalceramic

8 Colors



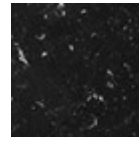
Beige travertino romano marble

1 color



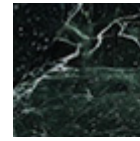
White calacatta vagli marble

1 color



Black marquiña marble

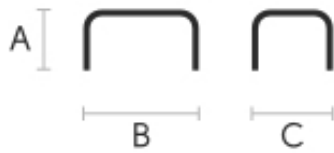
1 color



Green tinos marble

1 color

Dimensions



	A (cm) (inch)	B (cm) (inch)	C (cm) (inch)
Clessidra H27			
D70 (cm) (inch)	27 10.6	42 16.5	70 27.6
Clessidra H34			
D80 (cm) (inch)	34 13.4	52 20.5	80 31.5
Clessidra H40			
D40 (cm) (inch)	40 15.7	24 9.4	40 15.7
Clessidra H50			
D50 (cm) (inch)	50 19.7	29.4 11.6	50 19.7

Materials Certifications

Dark green metal

The technologies used in the previous phase of powder coating play a fundamental role in the final result of the processing. They are in fact essential to increase adherence paint on the metal surface and then guarantee its duration over time. The metal frames, following a total cleaning of the surface, pass through chemical conversion processes, creating a compact base that allows for better adhesion of the



Clessidra Table

design Paolo Vernier, 2019

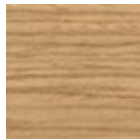


Fixed round table with solid or two-colored metal base. Wooden version available. Crystalceramic, marble or wooden top.

The Clessidra table received a special mention in the 2021 edition of **German Design Award** and ranked 3° at **Edward Haimsohn Design Award 2019** - <https://www.midj.com/world/classidra-table-finalist-of-edward-haimsohn-design-award>.

Colors and Materials

Structure



Stained ash veneered
10 Colors



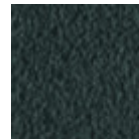
White steel



Sand steel



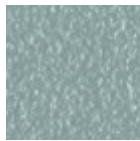
Pastel yellow steel



Grafite metal



Black steel



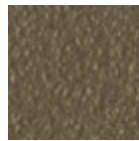
Light blue metal



Ocean blue steel



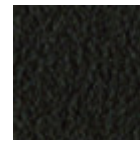
Bronze metal



Fango steel



Light grey steel



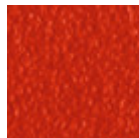
Brown steel



Ocher steel



Facepowder pink metal

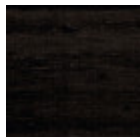


Red steel



Sage green metal

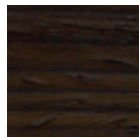
Coating



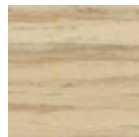
Black lacquered veneered ash



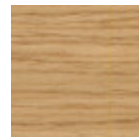
White lacquered veneered ash



Veneered ash dark oak



Veneered ash natural finish



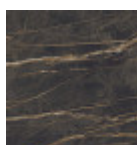
Veneered ash natural oak finish



Veneered flamed walnut



Glossy white calacatta marble crystalceramic



Noir desir glossy marble crystalceramic



Glossy greek black marble crystalceramic

Dimensions



	A (cm)	B (cm)	C (cm)
	(inch)	(inch)	(inch)
Ø 120 (cm)	75	120	120
(inch)	29.5	47.2	47.2
Ø 150 (cm)	76	150	150
(inch)	29.9	59.1	59.1
Ø 180 (cm)	76	180	180
(inch)	29.9	70.9	70.9
Barrel			
double base	76	300	150
(cm)	29.9	118.1	59.1
(inch)			

Volumetric Details

Weight 180 Kg

Volume 0.7 mc

Package 1

Downloads

3D Clessidra (zip) - <https://www.midj.com/images/uploads/resources/midj-clessidra-3d.zip>

Materials Certifications

Stained ash veneered

Veneered woods are the result of a process of gluing extremely thin sheets of wood applied to various types of supports to produce furnishing elements, which have a similar appearance to solid wood, but with better performance in terms of resistance to woodworms, lightness and greater stability over time.

If exposed to light, and in any case with the passage of time, the color of the veneer changes. It may happen that furniture of the same color purchased after some time, show color differences. Upon request, the veneered parts can be supplied with certified origin from forests managed in a correct and responsible manner, according to the rigorous environmental standards established by the FSC circuit.

CLEANING AND MAINTENANCE

For ordinary cleaning of veneered woods, use a cloth moistened with neutral soap well diluted in water or specific products. Always dry after each application with a dry cloth or paper towel. Do not use abrasive products. In case of accidental spills of substances or liquids, immediately dab the wood with paper towel or with a dry and clean cloth. Avoid proximity to heat sources. Evenly expose the veneered woods to light, for example by periodically opening the table extensions that are stored inside the structure, or by moving any object placed on the surface, such as vases and accessories.

These tips are cleaning recommendations and do not guarantee complete stain removal.

We recommend that you always test the cleaning method on a hidden part of the item to check the resistance of the color.

Colour samples are to be considered approximate for each product. Slight color differences between a lot and the other are to be considered normal.