



Cover SG TS Stool

design Midj R&D

Cover stool with swivel and height adjustable base. Seating upholstered in fabric, leather or faux leather.

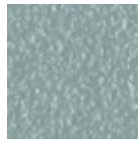


Colors and Materials

Structure



Papaya orange steel



Light blue metal



White steel



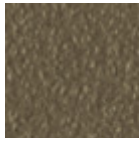
Ocean blue steel



Bronze metal



Sand steel



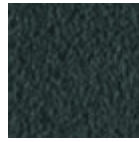
Fango steel



Golden yellow metal



Pastel yellow steel



Grafite metal



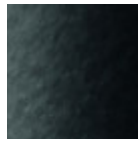
Ash grey metal



Light grey steel



Brown steel



Black steel



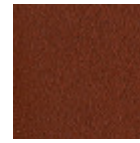
Ocher steel



Facepowder pink metal



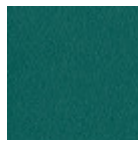
Red steel



Bulgaro red metal



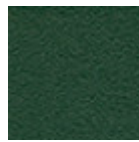
Cherry red metal



Pine green steel



Sage green metal



Dark green metal

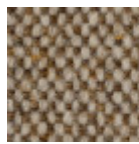
Coating

**Cotton Club fabric**

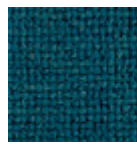
14 Colors

**Fenix Wool fabric**

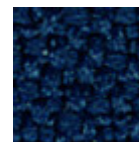
16 Colors

**Main Line Flax fabric**

16 Colors

**Manhattan fabric**

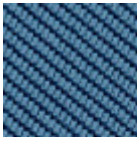
13 Colors

**Mirage fabric**

15 Colors

**Novabuk fabric**

17 Colors

**Tessuto Oceanic**

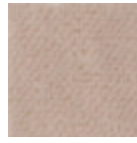
13 Colors

**Remix 3 fabric**

19 Colors

**Second fabric**

11 Colors

**Velvet Superb**

15 Colors

**Uniform Melange Fabric**

7 Colors

**Visual fabric**

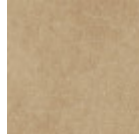
13 Colors

**Yoredale fabric**

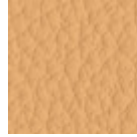
14 Colors

**Secret faux leather**

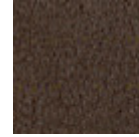
23 Colors

**Vintage faux leather**

12 Colors

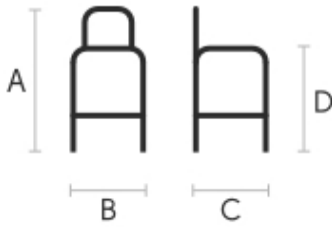
**Fiore leather**

21 Colors

**Vintage leather**

8 Colors

Dimensions



	cm	inch
A	80/95	31,5/37,4
B	45	17.7
C	48	18.9
D	64/79	25,2/31,1

Volumetric Details

Weight 17 Kg**Volume** 0.20 mc**Package** 1

Materials Certifications

Dark green metal

The technologies used in the previous phase of powder coating play a fundamental role in the final result of the processing. They are in fact essential to increase adherence paint on the metal surface and then guarantee its duration over time. The metal frames, following a total cleaning of the surface, pass through chemical conversion processes, creating a compact base that allows for better adhesion of the subsequent treatment. In the last phase the object subjected to the powder coating process is placed in a polymerization oven, going to form an adherent and extremely tight layer durable. This particular paint job is ideal for outdoor use.

To clean the surface, use a damp microfiber cloth with neutral soap or specific metal cleaning products. Avoid hitting or rubbing the surface with sharp objects. Do not use scourers or other abrasive materials, since they would inevitably scratch the surface. Do not leave rusty iron objects on the surface for too long.

These surface treatments are not suitable for outdoor use, but they guarantee excellent resistance to frequent use, dirt and dust.

Materials Certifications

Cotton Club fabric

COMPOSITION: 70 % COT; 10% PES; 10% ACR; 10% AF
Abrasion resistance (Martindale) 100.000 cycles

Cotton Club by Flukso is a fabric made from latest generation regenerated cotton yarns. To create this



Cover H65 - H75 Stool

design Midj R&D

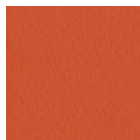
Cover stool with four leg frame in chrome or lacquered metal. Shell in leather, faux leather or fabric.

Available in two different heights: 65 cm (25.6 in) 75 cm (29.5 in).

Stackable up to four pieces, the H75 version has the CATAS certification.

Colors and Materials

Structure



Papaya orange steel



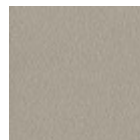
Light blue metal



White steel



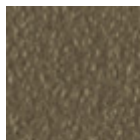
Bronze metal



Ash grey metal



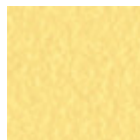
Sand steel



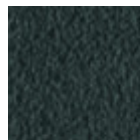
Fango steel



Golden yellow metal



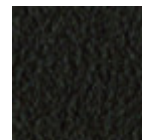
Pastel yellow steel



Grafite metal



Light grey steel



Brown steel



Black steel



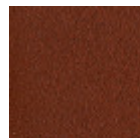
Ocher steel



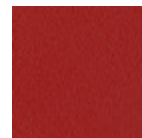
Facepowder pink metal



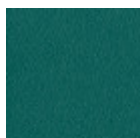
Red steel



Bulgaro red metal



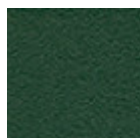
Cherry red metal



Pine green steel



Sage green metal

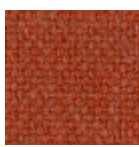


Dark green metal

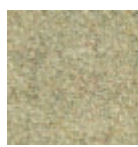


Chrome

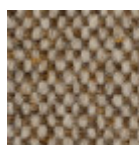
Coating



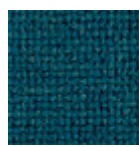
Cotton Club fabric
14 Colors



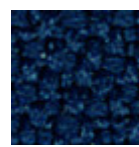
Fenix Wool fabric
16 Colors



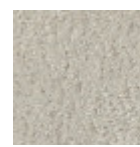
Main Line Flax fabric
16 Colors



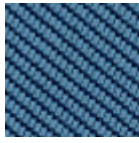
Manhattan fabric
13 Colors



Mirage fabric
15 Colors



Novabuk fabric
17 Colors



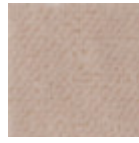
Tessuto Oceanic
13 Colors



Remix 3 fabric
19 Colors



Second fabric
11 Colors



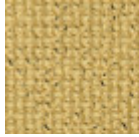
Velvet Superb
15 Colors



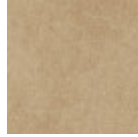
Uniform Melange Fabric
7 Colors



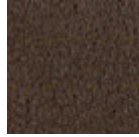
Visual fabric
13 Colors



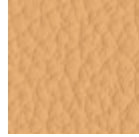
Yoredale fabric
14 Colors



Vintage faux leather
12 Colors



Vintage leather
8 Colors

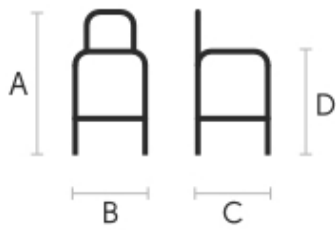


Fiore leather
21 Colors



Secret faux leather
23 Colors

Dimensions



	A	B	C	
	(cm)	(cm)	(cm)	D
	(inch)	(inch)	(inch)	

H65				
(cm)	80	49	49	65
(inch)	31.5	19.3	19.3	25.6
H75				
(cm)	90	49	49	75
(inch)	35.4	19.3	19.3	29.5

Volumetric Details

Weight 7 Kg
Volume 0.32 mc
Package 1

Certifications



Downloads

- [.3ds Cover H65 \(zip\)](https://www.midj.com/images/uploads/resources/3d-midj-cover-h65-m-ts-3ds.zip) - <https://www.midj.com/images/uploads/resources/3d-midj-cover-h65-m-ts-3ds.zip>
- [.dae Cover H65 \(zip\)](https://www.midj.com/images/uploads/resources/3d-midj-cover-h65-m-ts-dae.zip) - <https://www.midj.com/images/uploads/resources/3d-midj-cover-h65-m-ts-dae.zip>
- [.dxf Cover H65 \(zip\)](https://www.midj.com/images/uploads/resources/3d-midj-cover-h65-m-ts-dxf.zip) - <https://www.midj.com/images/uploads/resources/3d-midj-cover-h65-m-ts-dxf.zip>
- [.obj Cover H65 \(zip\)](https://www.midj.com/images/uploads/resources/3d-midj-cover-h65-m-ts-obj.zip) - <https://www.midj.com/images/uploads/resources/3d-midj-cover-h65-m-ts-obj.zip>
- [.stl Cover H65 \(zip\)](https://www.midj.com/images/uploads/resources/3d-midj-cover-h65-m-ts-stl.zip) - <https://www.midj.com/images/uploads/resources/3d-midj-cover-h65-m-ts-stl.zip>
- [.3ds Cover H75 \(zip\)](https://www.midj.com/images/uploads/resources/3d-midj-cover-h75-m-ts-3ds.zip) - <https://www.midj.com/images/uploads/resources/3d-midj-cover-h75-m-ts-3ds.zip>
- [.dae Cover H75 \(zip\)](https://www.midj.com/images/uploads/resources/3d-midj-cover-h75-m-ts-dae.zip) - <https://www.midj.com/images/uploads/resources/3d-midj-cover-h75-m-ts-dae.zip>
- [.dxf Cover H75 \(zip\)](https://www.midj.com/images/uploads/resources/3d-midj-cover-h75-m-ts-dxf.zip) - <https://www.midj.com/images/uploads/resources/3d-midj-cover-h75-m-ts-dxf.zip>
- [.obj Cover H75 \(zip\)](https://www.midj.com/images/uploads/resources/3d-midj-cover-h75-m-ts-obj.zip) - <https://www.midj.com/images/uploads/resources/3d-midj-cover-h75-m-ts-obj.zip>
- [.stl Cover H75 \(zip\)](https://www.midj.com/images/uploads/resources/3d-midj-cover-h75-m-ts-stl.zip) - <https://www.midj.com/images/uploads/resources/3d-midj-cover-h75-m-ts-stl.zip>

Materials Certifications

Dark green metal

The technologies used in the previous phase of powder coating play a fundamental role in the final result of the processing. They are in fact essential to increase adherence paint on the metal surface and then guarantee its duration over time. The metal frames, following a total cleaning of the surface, pass through chemical conversion processes, creating a compact base that allows for better adhesion of the subsequent treatment. In the last phase the object subjected to the powder coating process is placed in a



Cover H65 LR TS Stool

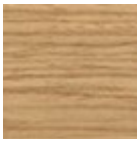
design Midj R&D

Cover stool with stained veneered ash wood and seat upholstered in fabric, leather or faux leather.



Colors and Materials

Structure



Lacquered ash

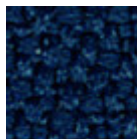
11 Colors

Coating



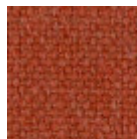
Secret faux leather

23 Colors



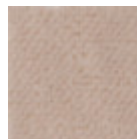
Mirage fabric

15 Colors



Cotton Club fabric

14 Colors



Velvet Superb

15 Colors



Second fabric

11 Colors



Main Line Flax fabric

16 Colors



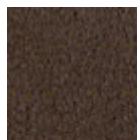
Remix 3 fabric

19 Colors



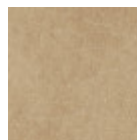
Uniform Melange Fabric

7 Colors



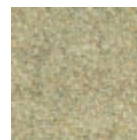
Vintage leather

8 Colors



Vintage faux leather

12 Colors



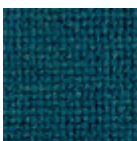
Fenix Wool fabric

16 Colors



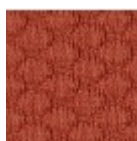
Novabuk fabric

17 Colors



Manhattan fabric

13 Colors



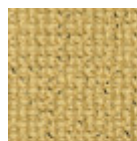
Visual fabric

13 Colors



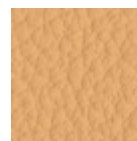
Tessuto Oceanic

13 Colors



Yoredale fabric

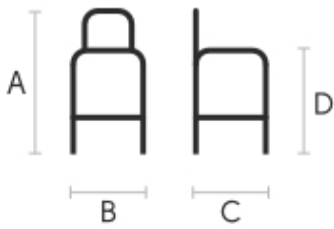
14 Colors



Fiore leather

21 Colors

Dimensions



Volumetric Details

Weight 7 Kg
Volume 0.22 mc
Package 1

	cm	inch
A	83	32.7
B	43	16.9
C	47	18.5
D	66	26

Materials Certifications

Lacquered ash

Ash wood is durable material, with good resistance and flexibility. Thanks to its porosity, it is ideal to be lacquered. Its original color is quite light: it can range from light blond, to pink and pale brown, with possible shades of green. In our set of samples, it is available in the natural finish and in numerous color variations: from the classic wood effects to the most pop colors of the moment. The ash used for our materials is European.

CLEANING AND MAINTENANCE

Ash is an easy-to-clean wood: to remove dust or light stains, rub the surface with a soft cloth, if necessary moistened in a solution of hot water or white vinegar, to help eliminate stains without altering the beauty and shine of the wood. Always dry the surface. In addition, you can choose to use specific products for wooden furniture.

These tips are cleaning recommendations and do not guarantee complete stain removal. We recommend that you always test the cleaning method on a hidden part of the item to check the resistance of the color.

Colour samples are to be considered approximate for each product. Slight color differences between a lot and the other are to be considered normal.

Materials Certifications

Secret faux leather

COMPOSITION: 76% PVC - 2% PU 22% PES
MARTINDALE: 100.000 cycles

FIRE RESISTANCE:

UNI 9175 classe 1IM
 EN 1021-1
 EN 1021-2
 BS 5852-1 cigarette test
 BS 5852-1 match test
 TB 117:2013

Secret is the Flukso® fireproof coating with a soft hand, similar to that of real leather. Secret has been designed to create soft upholstery for interiors. Its elastic rear structure in polyester allows it to adapt to the new geometries of furniture, ensuring resistance and durability over time.

CLEANING AND MAINTENANCE

Regular cleaning is important to extend the life of the coating, and keep its appearance unchanged. Dust and dirt can wear out the coating and damage the fire protection.

REGULAR CLEANING: vacuum frequently at a power equal to half the device in use, choosing a smooth spout, without brushing.

STAIN REMOVAL: in case of slight stains, promptly clean the surface. Remove excess liquids or hard



Cover H75 LR TS Stool

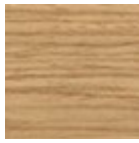
design Midj R&D

Cover stool with stained veneered ash wood and seat upholstered in fabric, leather or faux leather.



Colors and Materials

Structure



Lacquered ash

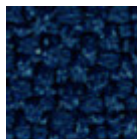
11 Colors

Coating



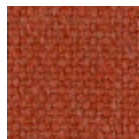
Secret faux leather

23 Colors



Mirage fabric

15 Colors



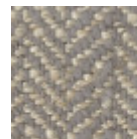
Cotton Club fabric

14 Colors



Velvet Superb

15 Colors



Second fabric

11 Colors



Main Line Flax fabric

16 Colors



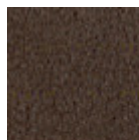
Remix 3 fabric

19 Colors



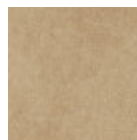
Uniform Melange Fabric

7 Colors



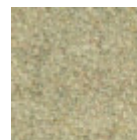
Vintage leather

8 Colors



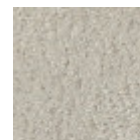
Vintage faux leather

12 Colors



Fenix Wool fabric

16 Colors



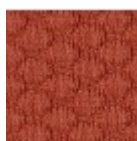
Novabuk fabric

17 Colors



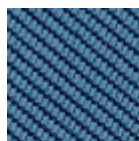
Manhattan fabric

13 Colors



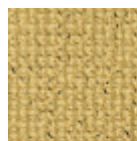
Visual fabric

13 Colors



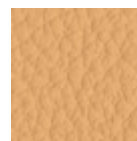
Tessuto Oceanic

13 Colors



Yoredale fabric

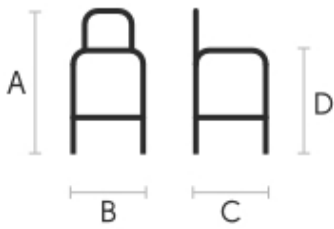
14 Colors



Fiore leather

21 Colors

Dimensions



Volumetric Details

Weight 7.5 Kg
Volume 0.25 mc
Package 1

	cm	inch
A	93	36.6
B	43	16.9
C	47	18.5
D	76	29.9

Materials Certifications

Lacquered ash

Ash wood is durable material, with good resistance and flexibility. Thanks to its porosity, it is ideal to be lacquered. Its original color is quite light: it can range from light blond, to pink and pale brown, with possible shades of green. In our set of samples, it is available in the natural finish and in numerous color variations: from the classic wood effects to the most pop colors of the moment. The ash used for our materials is European.

CLEANING AND MAINTENANCE

Ash is an easy-to-clean wood: to remove dust or light stains, rub the surface with a soft cloth, if necessary moistened in a solution of hot water or white vinegar, to help eliminate stains without altering the beauty and shine of the wood. Always dry the surface. In addition, you can choose to use specific products for wooden furniture.

These tips are cleaning recommendations and do not guarantee complete stain removal. We recommend that you always test the cleaning method on a hidden part of the item to check the resistance of the color.

Colour samples are to be considered approximate for each product. Slight color differences between a lot and the other are to be considered normal.

Materials Certifications

Secret faux leather

COMPOSITION: 76% PVC - 2% PU 22% PES
MARTINDALE: 100.000 cycles

FIRE RESISTANCE:

UNI 9175 classe 1IM
 EN 1021-1
 EN 1021-2
 BS 5852-1 cigarette test
 BS 5852-1 match test
 TB 117:2013

Secret is the Flukso® fireproof coating with a soft hand, similar to that of real leather. Secret has been designed to create soft upholstery for interiors. Its elastic rear structure in polyester allows it to adapt to the new geometries of furniture, ensuring resistance and durability over time.

CLEANING AND MAINTENANCE

Regular cleaning is important to extend the life of the coating, and keep its appearance unchanged. Dust and dirt can wear out the coating and damage the fire protection.

REGULAR CLEANING: vacuum frequently at a power equal to half the device in use, choosing a smooth spout, without brushing.

STAIN REMOVAL: in case of slight stains, promptly clean the surface. Remove excess liquids or hard