



Cover P M-TV TS Armchair

design Midj R&D

Cover armchair with writing board.

Base with four legs in chrome metal and shell upholstered in leather, faux leather or fabric.

Colors and Materials

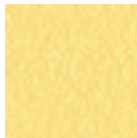
Structure



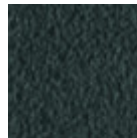
White steel



Sand steel



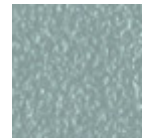
Pastel yellow steel



Grafite metal



Black steel



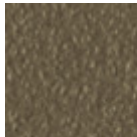
Light blue metal



Ocean blue steel



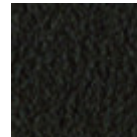
Bronze metal



Fango steel



Light grey steel



Brown steel



Ocher steel



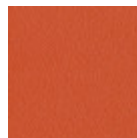
Facepowder pink
metal



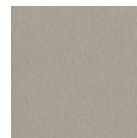
Red steel



Sage green metal



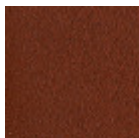
Papaya orange steel



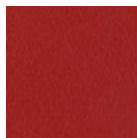
Ash grey metal



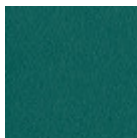
Golden yellow metal



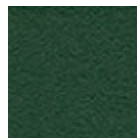
Bulgaro red metal



Cherry red metal



Pine green steel



Dark green metal



Chrome

Coating



Cotton Club fabric
14 Colors



Fenix Wool fabric
16 Colors



Main Line Flax fabric
16 Colors



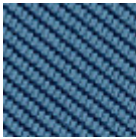
Manhattan fabric
13 Colors



Mirage fabric
15 Colors



Novabuk fabric
17 Colors



Tessuto Oceanic
13 Colors



Remix 3 fabric
19 Colors



Second fabric
11 Colors



Uniform Melange
Fabric
7 Colors



Visual fabric
13 Colors



Yoredale fabric
14 Colors



Velvet Superb
15 Colors



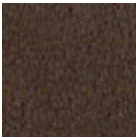
Secret faux leather
23 Colors



Vintage faux leather
12 Colors



Fiore leather
21 Colors



Vintage leather
8 Colors

Dimensions



	cm	inch
A	84	33.1
B	60	23.6
C	64	25.2
D	46	18.1
E	65	25.6

Volumetric Details

Weight 9.25 Kg
Volume 0.35 mc
Package 1

Materials Certifications

Dark green metal

The technologies used in the previous phase of powder coating play a fundamental role in the final result of the processing. They are in fact essential to increase adherence paint on the metal surface and then guarantee its duration over time. The metal frames, following a total cleaning of the surface, pass through chemical conversion processes, creating a compact base that allows for better adhesion of the subsequent treatment. In the last phase the object subjected to the powder coating process is placed in a polymerization oven, going to form an adherent and extremely tight layer durable. This particular paint job is ideal for outdoor use.

To clean the surface, use a damp microfiber cloth with neutral soap or specific metal cleaning products. Avoid hitting or rubbing the surface with sharp objects. Do not use scourers or other abrasive materials, since they would inevitably scratch the surface. Do not leave rusty iron objects on the surface for too long.

These surface treatments are not suitable for outdoor use, but they guarantee excellent resistance to frequent use, dirt and dust.

Materials Certifications

Cotton Club fabric

COMPOSITION: 70 % COT; 10% PES; 10% ACR; 10% AF
Abrasion resistance (Martindale) 100.000 cycles



Cover S L_R TS Chair

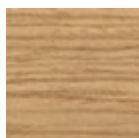
design Midj R&D

Cover chair with four leg wooden frame.

Upholstered shell in leather, faux leather or fabric.

Colors and Materials

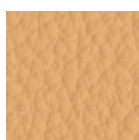
Structure



Lacquered ash

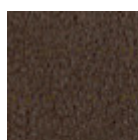
11 Colors

Coating



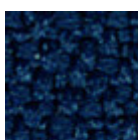
Fiore leather

21 Colors



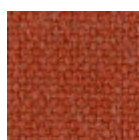
Vintage leather

8 Colors



Mirage fabric

15 Colors



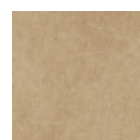
Cotton Club fabric

14 Colors



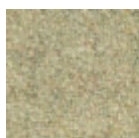
Secret faux leather

23 Colors



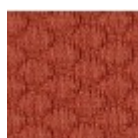
Vintage faux leather

12 Colors



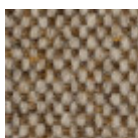
Fenix Wool fabric

16 Colors



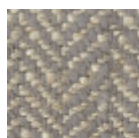
Visual fabric

13 Colors



Main Line Flax fabric

16 Colors



Second fabric

11 Colors



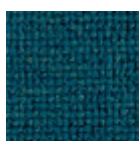
Velvet Superb

15 Colors



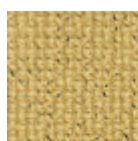
Tessuto Oceanic

13 Colors



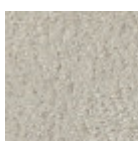
Manhattan fabric

13 Colors



Yoredale fabric

14 Colors



Novabuk fabric

17 Colors



Remix 3 fabric

19 Colors



Uniform Melange Fabric

7 Colors

Dimensions



Volumetric Details

Weight 7.25 Kg
Volume 0.46 mc
Package 1

	cm	inch
A	84	33.1
B	48	18.9
C	55	21.7
D	46	18.1

Downloads

[.3ds Cover S L_R TS \(zip\)](https://www.midj.com/images/uploads/resources/3d-midj-cover-s-l-ts-r-3ds.zip) - <https://www.midj.com/images/uploads/resources/3d-midj-cover-s-l-ts-r-3ds.zip>

Materials Certifications

Lacquered ash

Ash wood is durable material, with good resistance and flexibility. Thanks to its porosity, it is ideal to be lacquered. Its original color is quite light: it can range from light blond, to pink and pale brown, with possible shades of green. In our set of samples, it is available in the natural finish and in numerous color variations: from the classic wood effects to the most pop colors of the moment. The ash used for our materials is European.

CLEANING AND MAINTENANCE

Ash is an easy-to-clean wood: to remove dust or light stains, rub the surface with a soft cloth, if necessary moistened in a solution of hot water or white vinegar, to help eliminate stains without altering the beauty and shine of the wood. Always dry the surface. In addition, you can choose to use specific products for wooden furniture.

These tips are cleaning recommendations and do not guarantee complete stain removal. We recommend that you always test the cleaning method on a hidden part of the item to check the resistance of the color.

Colour samples are to be considered approximate for each product. Slight color differences between a lot and the other are to be considered normal.

Materials Certifications

Fiore leather

COMPOSITION: 100% leather

FIRE RESISTANCE:
CAL TB-117 (2013, Sec. 1)
BS 5852:1979
BS EN 1021-1-2:2006

Fiore leather is a natural product and this is why it can show signs such as wrinkles, veining and scars that indicate the animal origin of the product. These signs, together with slightly color differences, are distinctive elements that enhance its beauty and distinguish it from faux leather or other artificial products. Fiore

is a bovine leather from animals of European origin, finished with water-based dyeing with resins and pigments. Fiore leather has the ability of improving with time and use, both in softness and shine.

Dust the leather product regularly with a soft and dry cloth. In case of stains, rub the affected area with a soft and clean cloth, moistened with water or to use a light solution of water and mild soap, to be applied gently with a wet cloth. Move the cloth in a circular direction, starting from edges of the stain towards the center. Rinse well with a damp cloth. Dry immediately after treatment. Avoid direct sunlight and exposure to heat sources.



Cover S M_M TS Chair

design Midj R&D

Cover chair with four legs frame in chrome or laquered metal.
Upholstered shell in leather, faux leather, or fabric.

Stackable up to four pieces, it has the CATAS certification.

Colors and Materials

Structure



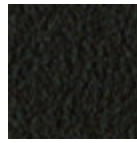
White steel



Black steel



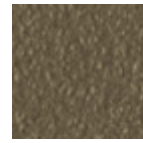
Sand steel



Brown steel



Grafite metal



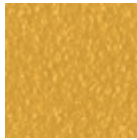
Fango steel



Bronze metal



Pastel yellow steel



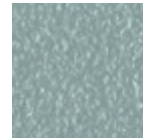
Ocher steel



Red steel



Sage green metal



Light blue metal



Ocean blue steel



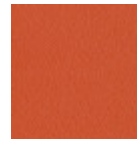
Facepowder pink
metal



Light grey steel



Chrome



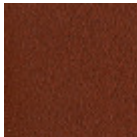
Papaya orange steel



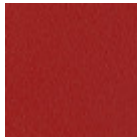
Ash grey metal



Golden yellow metal



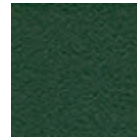
Bulgaro red metal



Cherry red metal

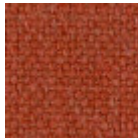


Pine green steel



Dark green metal

Coating



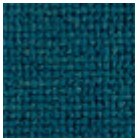
Cotton Club fabric
14 Colors



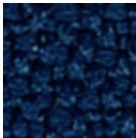
Fenix Wool fabric
16 Colors



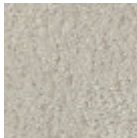
Main Line Flax fabric
16 Colors



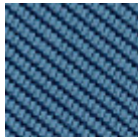
Manhattan fabric
13 Colors



Mirage fabric
15 Colors



Novabuk fabric
17 Colors



Tessuto Oceanic
13 Colors



Remix 3 fabric
19 Colors



Second fabric
11 Colors



Uniform Melange
Fabric
7 Colors



Visual fabric
13 Colors



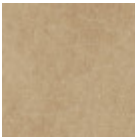
Yoredale fabric
14 Colors



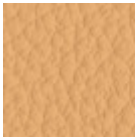
Velvet Superb
15 Colors



Secret faux leather
23 Colors



Vintage faux leather
12 Colors



Fiore leather
21 Colors



Vintage leather
8 Colors

Dimensions



	cm	inch
A	84	33.1
B	48	18.9
C	55	21.7
D	46	18.1

Volumetric Details

Weight 8 Kg
Volume 0.35 mc
Package 1
Stackable 4 pieces

Certifications



Downloads

- .3ds Cover S M_M TS (zip) - <https://www.midj.com/images/uploads/resources/3d-midj-cover-s-m-ts-m-3ds.zip>
- .dae Cover S M_M TS (zip) - <https://www.midj.com/images/uploads/resources/3d-midj-cover-s-m-ts-m-dae.zip>
- .dwg Cover S M_M TS (zip) - <https://www.midj.com/images/uploads/resources/3d-midj-cover-s-m-ts-m-dwg.zip>
- .dxf Cover S M_M TS (zip) - <https://www.midj.com/images/uploads/resources/3d-midj-cover-s-m-ts-m-dxf.zip>
- .obj Cover S M_M TS (zip) - <https://www.midj.com/images/uploads/resources/3d-midj-cover-s-m-ts-m-obj.zip>
- .stl Cover S M_M TS (zip) - <https://www.midj.com/images/uploads/resources/3d-midj-cover-s-m-ts-m-stl.zip>

Materials Certifications

Dark green metal

The technologies used in the previous phase of powder coating play a fundamental role in the final result of the processing. They are in fact essential to increase adherence paint on the metal surface and then guarantee its duration over time. The metal frames, following a total cleaning of the surface, pass through chemical conversion processes, creating a compact base that allows for better adhesion of the subsequent treatment. In the last phase the object subjected to the powder coating process is placed in a polymerization oven, going to form an adherent and extremely tight layer durable. This particular paint job is ideal for outdoor use.

To clean the surface, use a damp microfiber cloth with neutral soap or specific metal cleaning products. Avoid hitting or rubbing the surface with sharp objects. Do not use scourers or other abrasive materials, since they would inevitably scratch the surface. Do not leave rusty iron objects on the surface for too long.

These surface treatments are not suitable for outdoor use, but they guarantee excellent resistance to



Cover S M_Q TS Chair

design Midj R&D

Cover chair with four leg base in lacquered metal.

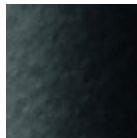
Upholstered shell in leather, faux leather or fabric.

Colors and Materials

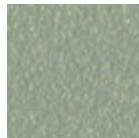
Structure



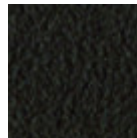
White steel



Black steel



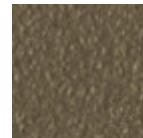
Sand steel



Brown steel



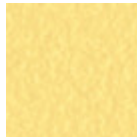
Grafite metal



Fango steel



Bronze metal



Pastel yellow steel



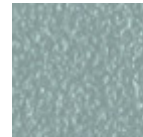
Ocher steel



Red steel



Sage green metal



Light blue metal



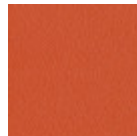
Ocean blue steel



Facepowder pink
metal



Light grey steel



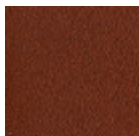
Papaya orange steel



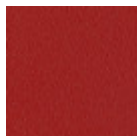
Ash grey metal



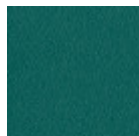
Golden yellow metal



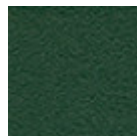
Bulgaro red metal



Cherry red metal

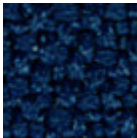


Pine green steel



Dark green metal

Coating



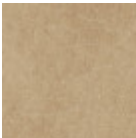
Mirage fabric
15 Colors



Cotton Club fabric
14 Colors



Secret faux leather
23 Colors



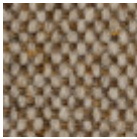
Vintage faux leather
12 Colors



Fenix Wool fabric
16 Colors



Visual fabric
13 Colors



Main Line Flax fabric
16 Colors



Second fabric
11 Colors



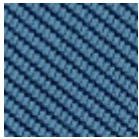
Velvet Superb
15 Colors



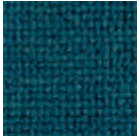
Fiore leather
21 Colors



Vintage leather
8 Colors



Tessuto Oceanic
13 Colors



Manhattan fabric
13 Colors



Yoredale fabric
14 Colors



Novabuk fabric
17 Colors

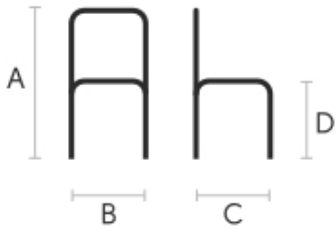


Remix 3 fabric
19 Colors



Uniform Melange
Fabric
7 Colors

Dimensions



	cm	inch
A	84	33.1
B	48	18.9
C	55	21.7
D	46	18.1

Volumetric Details

Weight 8 Kg
Volume 0.26 mc
Package 1

Downloads

.3ds Cover S M_Q TS (zip) - <https://www.midj.com/images/uploads/resources/3d-midj-cover-s-m-ts-q-3ds.zip>

Materials Certifications

Dark green metal

The technologies used in the previous phase of powder coating play a fundamental role in the final result of the processing. They are in fact essential to increase adherence paint on the metal surface and then guarantee its duration over time. The metal frames, following a total cleaning of the surface, pass through chemical conversion processes, creating a compact base that allows for better adhesion of the subsequent treatment. In the last phase the object subjected to the powder coating process is placed in a polymerization oven, going to form an adherent and extremely tight layer durable. This particular paint job is ideal for outdoor use.

To clean the surface, use a damp microfiber cloth with neutral soap or specific metal cleaning products. Avoid hitting or rubbing the surface with sharp objects. Do not use scourers or other abrasive materials, since they would inevitably scratch the surface. Do not leave rusty iron objects on the surface for too long.

These surface treatments are not suitable for outdoor use, but they guarantee excellent resistance to frequent use, dirt and dust.



Cover S M_T TS Chair

design Midj R&D

Cover chair with sled base in chrome or lacquered metal.

Upholstered shell in leather, faux leather or fabric.

Colors and Materials

Structure



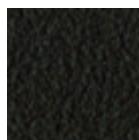
White steel



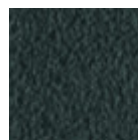
Black steel



Sand steel



Brown steel



Grafite metal



Fango steel



Bronze metal



Pastel yellow steel



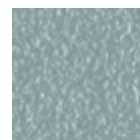
Ocher steel



Red steel



Sage green metal



Light blue metal



Ocean blue steel



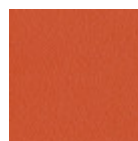
Facepowder pink
metal



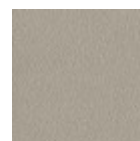
Light grey steel



Chrome



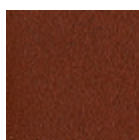
Papaya orange steel



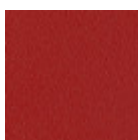
Ash grey metal



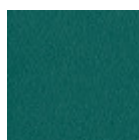
Golden yellow metal



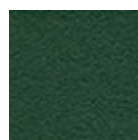
Bulgaro red metal



Cherry red metal

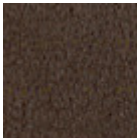


Pine green steel



Dark green metal

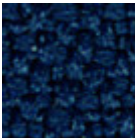
Coating



Vintage leather
8 Colors



Fiore leather
21 Colors



Mirage fabric
15 Colors



Cotton Club fabric
14 Colors



Secret faux leather
23 Colors



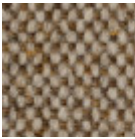
Vintage faux leather
12 Colors



Fenix Wool fabric
16 Colors



Visual fabric
13 Colors



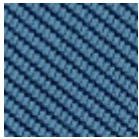
Main Line Flax fabric
16 Colors



Second fabric
11 Colors



Velvet Superb
15 Colors



Tessuto Oceanic
13 Colors



Manhattan fabric
13 Colors



Yoredale fabric
14 Colors



Novabuk fabric
17 Colors



Remix 3 fabric
19 Colors



Uniform Melange Fabric
7 Colors

Dimensions



	cm	inch
A	84	33.1
B	46	18.1
C	55	21.7
D	46	18.1

Volumetric Details

Weight 9 Kg
Volume 0.26 mc
Package 1

Downloads

.dae Cover S M_T TS (zip) - <https://www.midj.com/images/uploads/resources/3d-midj-cover-s-m-ts-t-dae.zip>
.dxf Cover S M_T TS (zip) - <https://www.midj.com/images/uploads/resources/3d-midj-cover-s-m-ts-t-dxf.zip>
.obj Cover S M_T TS (zip) - <https://www.midj.com/images/uploads/resources/3d-midj-cover-s-m-ts-m-obj.zip>
.stl Cover S M_T TS (zip) - <https://www.midj.com/images/uploads/resources/3d-midj-cover-s-m-ts-t-stl.zip>
.3ds Cover S M_T TS (zip) - <https://www.midj.com/images/uploads/resources/3d-midj-cover-s-m-ts-t-3ds.zip>

Materials Certifications

Dark green metal

The technologies used in the previous phase of powder coating play a fundamental role in the final result of the processing. They are in fact essential to increase adherence paint on the metal surface and then guarantee its duration over time. The metal frames, following a total cleaning of the surface, pass through chemical conversion processes, creating a compact base that allows for better adhesion of the subsequent treatment. In the last phase the object subjected to the powder coating process is placed in a polymerization oven, going to form an adherent and extremely tight layer durable. This particular paint job is ideal for outdoor use.

To clean the surface, use a damp microfiber cloth with neutral soap or specific metal cleaning products. Avoid hitting or rubbing the surface with sharp objects. Do not use scourers or other abrasive materials, since they would inevitably scratch the surface. Do not leave rusty iron objects on the surface for too long.

These surface treatments are not suitable for outdoor use, but they guarantee excellent resistance to frequent use, dirt and dust.



Cover P M TS Armchair

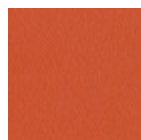
design Midj R&D

Cover armchair with four leg frame in chrome or lacquered metal. Shell upholstered with leather, faux leather or fabric.

Stackable up to four pieces.

Colors and Materials

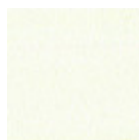
Structure



Papaya orange steel



Light blue metal



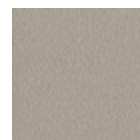
White steel



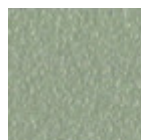
Ocean blue steel



Bronze metal



Ash grey metal



Sand steel



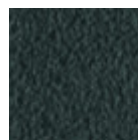
Fango steel



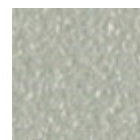
Golden yellow metal



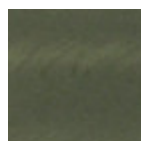
Pastel yellow steel



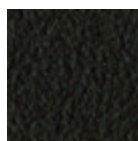
Grafite metal



Light grey steel



Industrial steel



Brown steel



Black steel



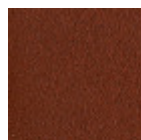
Ocher steel



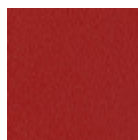
Facepowder pink metal



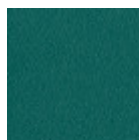
Red steel



Bulgaro red metal



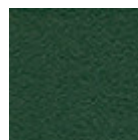
Cherry red metal



Pine green steel



Sage green metal

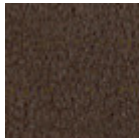


Dark green metal

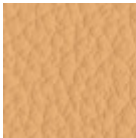


Chrome

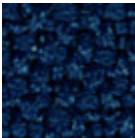
Coating



Vintage leather
8 Colors



Fiore leather
21 Colors



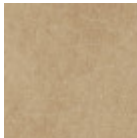
Mirage fabric
15 Colors



Cotton Club fabric
14 Colors



Similpelle Secret
23 Colors



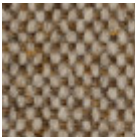
Similpelle Vintage
12 Colors



Fenix Wool fabric
16 Colors



Visual fabric
13 Colors



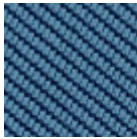
Main Line Flax fabric
16 Colors



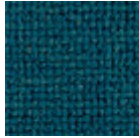
Second fabric
11 Colors



Velvet Superb
15 Colors



Tessuto Oceanic
13 Colors



Manhattan fabric
13 Colors



Yoredale fabric
14 Colors



Novabuk fabric
17 Colors

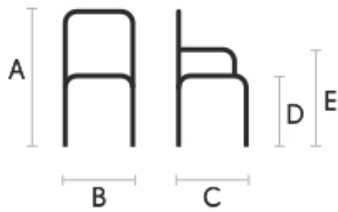


Remix 3 fabric
19 Colors



Uniform Melange Fabric
7 Colors

Dimensions



	cm	inch
A	83	32.7
B	52	20.5
C	58	22.8
D	46	18.1
E	65	25.6

Volumetric Details

Weight 9.25 Kg
Volume 0.35 mc
Package 1

Downloads

.dae Cover P M TS (zip) - <https://www.midj.com/images/uploads/resources/3d-midj-cover-p-m-ts-dae.zip>
.dxf Cover P M TS (zip) - <https://www.midj.com/images/uploads/resources/3d-midj-cover-p-m-ts-dxf.zip>
.obj Cover P M TS (zip) - <https://www.midj.com/images/uploads/resources/3d-midj-cover-p-m-ts-obj.zip>
.stl Cover P M TS (zip) - <https://www.midj.com/images/uploads/resources/3d-midj-cover-p-m-ts-stl.zip>
.3ds Cover P M TS (zip) - <https://www.midj.com/images/uploads/resources/3d-midj-cover-p-m-ts-3ds.zip>

Materials Certifications

Dark green metal

The technologies used in the previous phase of powder coating play a fundamental role in the final result of the processing. They are in fact essential to increase adherence paint on the metal surface and then guarantee its duration over time. The metal frames, following a total cleaning of the surface, pass through chemical conversion processes, creating a compact base that allows for better adhesion of the subsequent treatment. In the last phase the object subjected to the powder coating process is placed in a polymerization oven, going to form an adherent and extremely tight layer durable. This particular paint job is ideal for outdoor use.

To clean the surface, use a damp microfiber cloth with neutral soap or specific metal cleaning products. Avoid hitting or rubbing the surface with sharp objects. Do not use scourers or other abrasive materials, since they would inevitably scratch the surface. Do not leave rusty iron objects on the surface for too long.

These surface treatments are not suitable for outdoor use, but they guarantee excellent resistance to