



# Dalia S M\_T TS Chair

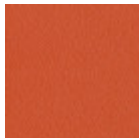
design Beatriz Sempere, 2017

Dalia chair with sled base in lacquered metal.

Shell upholstered in leather, faux leather and fabric.

## Colors and Materials

### Structure



Papaya orange steel



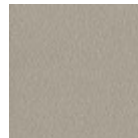
Light blue metal



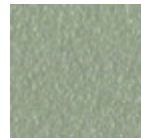
White steel



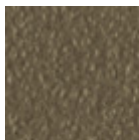
Bronze metal



Ash grey metal



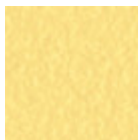
Sand steel



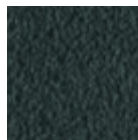
Fango steel



Golden yellow metal



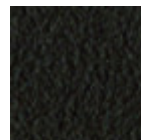
Pastel yellow steel



Grafite metal



Light grey steel



Brown steel



Black steel



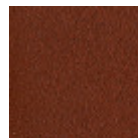
Ocher steel



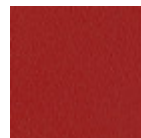
Facepowder pink metal



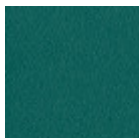
Red steel



Bulgaro red metal



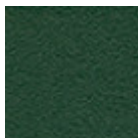
Cherry red metal



Pine green steel



Sage green metal



Dark green metal



Chrome

### Coating



**Tissu Cotton Club**  
14 Colors



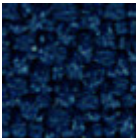
**Tissu Fenix Wool**  
16 Colors



**Tissu Main Line Flax**  
16 Colors



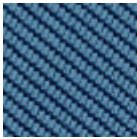
**Tissu manhattan**  
13 Colors



**Tissu Mirage**  
15 Colors



**Tissu Novabuk**  
17 Colors



**Tissu Oceanic**  
13 Colors



**Tissu Remix 3**  
19 Colors



**Tissu Second**  
11 Colors



**Velours Superb**  
16 Colors



**Tissu Uniform Melange**  
7 Colors



**Tissu Visual**  
13 Colors



**Tissu Yoredale**  
14 Colors



**Vintage leather**  
8 Colors



**Vintage faux leather**  
12 Colors

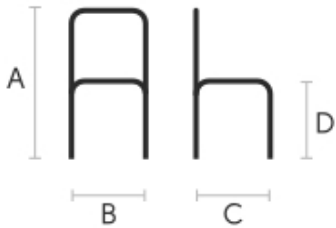


**Secret faux leather**  
23 Colors



**Fiore leather**  
21 Colors

## Dimensions



	cm	inch
A	83	32.7
B	54	21.3
C	60	23.6
D	47	18.5

## Volumetric Details

**Weight** 9.6 Kg  
**Volume** 0.37 mc  
**Package** 1

## Downloads

**.3ds Dalia S M\_T TS (zip)** - <https://www.midj.com/images/uploads/resources/3d-midj-dalia-s-m-ts-t-3ds.zip>  
**.dae Dalia S M\_T TS (zip)** - <https://www.midj.com/images/uploads/resources/3d-midj-dalia-s-m-ts-t-dae.zip>  
**.dxf Dalia S M\_T TS (zip)** - <https://www.midj.com/images/uploads/resources/3d-midj-dalia-s-m-ts-t-dxf.zip>  
**.obj Dalia S M\_T TS (zip)** - <https://www.midj.com/images/uploads/resources/3d-midj-dalia-s-m-ts-t-obj.zip>  
**.stl Dalia S M\_T TS (zip)** - <https://www.midj.com/images/uploads/resources/3d-midj-dalia-s-m-ts-t-stl.zip>

## Materials Certifications

### Dark green metal

The technologies used in the previous phase of powder coating play a fundamental role in the final result of the processing. They are in fact essential to increase adherence paint on the metal surface and then guarantee its duration over time. The metal frames, following a total cleaning of the surface, pass through chemical conversion processes, creating a compact base that allows for better adhesion of the subsequent treatment. In the last phase the object subjected to the powder coating process is placed in a polymerization oven, going to form an adherent and extremely tight layer durable. This particular paint job is ideal for outdoor use.

To clean the surface, use a damp microfiber cloth with neutral soap or specific metal cleaning products. Avoid hitting or rubbing the surface with sharp objects. Do not use scourers or other abrasive materials, since they would inevitably scratch the surface. Do not leave rusty iron objects on the surface for too long.

These surface treatments are not suitable for outdoor use, but they guarantee excellent resistance to frequent use, dirt and dust.



# Dalia DPA TS Armchair

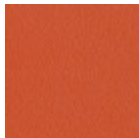
design Beatriz Sempere, 2017

Dalia task swivel and height adjustable armchair with five star base in lacquered metal. High backrest.

Shell upholstered in leather, faux leather and fabric.

## Colors and Materials

### Structure



Papaya orange steel



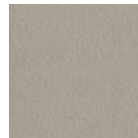
Light blue metal



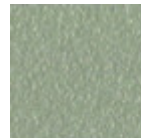
White steel



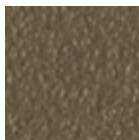
Bronze metal



Ash grey metal



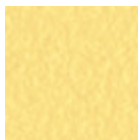
Sand steel



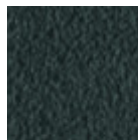
Fango steel



Golden yellow metal



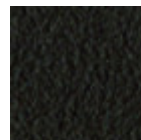
Pastel yellow steel



Grafite metal



Light grey steel



Brown steel



Black steel



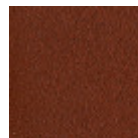
Ocher steel



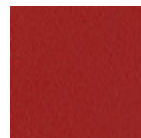
Facepowder pink metal



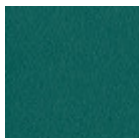
Red steel



Bulgaro red metal



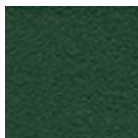
Cherry red metal



Pine green steel



Sage green metal



Dark green metal

### Coating



Cotton Club fabric  
14 Colors



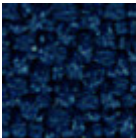
Fenix Wool fabric  
16 Colors



Main Line Flax fabric  
16 Colors



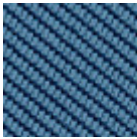
Manhattan fabric  
13 Colors



Mirage fabric  
15 Colors



Novabuk fabric  
17 Colors



Tessuto Oceanic  
13 Colors



Remix 3 fabric  
19 Colors



Second fabric  
11 Colors



Velvet Superb  
15 Colors



Uniform Melange  
Fabric  
7 Colors



Visual fabric  
13 Colors



Yoredale fabric  
14 Colors



Fiore leather  
21 Colors



Vintage leather  
8 Colors



Secret faux leather  
23 Colors



Vintage faux leather  
12 Colors

## Dimensions



	cm	inch
A	101/109	39.8/42.9
B	70	27.6
C	64	25.2
D	48/56	18.9/22
E	65/73	25.6/28.7

## Volumetric Details

Weight 15.8 Kg  
Volume 0.36 mc  
Package 1

## Downloads

[.3ds Dalia DPA TS \(zip\)](#) - <https://www.midj.com/images/uploads/resources/3d-midj-dalia-dpa-ts-3ds.zip>  
[.dae Dalia DPA TS \(zip\)](#) - <https://www.midj.com/images/uploads/resources/3d-midj-dalia-dpa-ts-dae.zip>  
[.dxg Dalia DPA TS \(zip\)](#) - <https://www.midj.com/images/uploads/resources/3d-midj-dalia-dpa-ts-dxf.zip>  
[.obj Dalia DPA TS \(zip\)](#) - <https://www.midj.com/images/uploads/resources/3d-midj-dalia-dpa-ts-obj.zip>  
[.stl Dalia DPA TS \(zip\)](#) - <https://www.midj.com/images/uploads/resources/3d-midj-dalia-dpa-ts-stl.zip>

## Materials Certifications

### Dark green metal

The technologies used in the previous phase of powder coating play a fundamental role in the final result of the processing. They are in fact essential to increase adherence paint on the metal surface and then guarantee its duration over time. The metal frames, following a total cleaning of the surface, pass through chemical conversion processes, creating a compact base that allows for better adhesion of the subsequent treatment. In the last phase the object subjected to the powder coating process is placed in a polymerization oven, going to form an adherent and extremely tight layer durable. This particular paint job is ideal for outdoor use.

To clean the surface, use a damp microfiber cloth with neutral soap or specific metal cleaning products. Avoid hitting or rubbing the surface with sharp objects. Do not use scourers or other abrasive materials, since they would inevitably scratch the surface. Do not leave rusty iron objects on the surface for too long.

These surface treatments are not suitable for outdoor use, but they guarantee excellent resistance to



# Dalia DPB TS Armchair

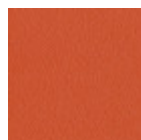
design Beatriz Sempere, 2017

Dalia task swivel and height adjustable armchair with five star base in lacquered metal. Low backrest.

Shell upholstered in leather, faux leather and fabric.

## Colors and Materials

### Structure



Papaya orange steel



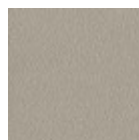
Light blue metal



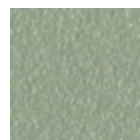
White steel



Bronze metal



Ash grey metal



Sand steel



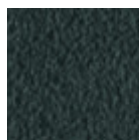
Fango steel



Golden yellow metal



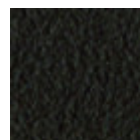
Pastel yellow steel



Grafite metal



Light grey steel



Brown steel



Black steel



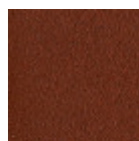
Ocher steel



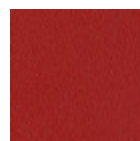
Facepowder pink metal



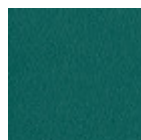
Red steel



Bulgaro red metal



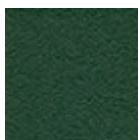
Cherry red metal



Pine green steel



Sage green metal



Dark green metal

### Coating



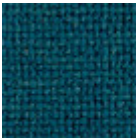
Cotton Club fabric  
14 Colors



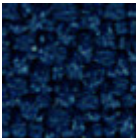
Fenix Wool fabric  
16 Colors



Main Line Flax fabric  
16 Colors



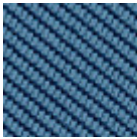
Manhattan fabric  
13 Colors



Mirage fabric  
15 Colors



Novabuk fabric  
17 Colors



Tessuto Oceanic  
13 Colors



Remix 3 fabric  
19 Colors



Second fabric  
11 Colors



Velvet Superb  
15 Colors



Uniform Melange  
Fabric  
7 Colors



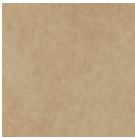
Visual fabric  
13 Colors



Yoredale fabric  
14 Colors



Vintage leather  
8 Colors



Vintage faux leather  
12 Colors



Secret faux leather  
23 Colors



Fiore leather  
21 Colors

## Dimensions



	cm	inch
A	87/95	34.3/37.4
B	70	27.6
C	60	23.6
D	48/56	18.9/22.1
E	65/73	25.6/28.7

## Volumetric Details

Weight 15 Kg  
Volume 0.3 mc  
Package 1

## Downloads

[.3ds Dalia DPB TS \(zip\)](https://www.midj.com/images/uploads/resources/3d-midj-dalia-dpb-ts-3ds.zip) - <https://www.midj.com/images/uploads/resources/3d-midj-dalia-dpb-ts-3ds.zip>  
[.dae Dalia DPB TS \(zip\)](https://www.midj.com/images/uploads/resources/3d-midj-dalia-dpb-ts-dae.zip) - <https://www.midj.com/images/uploads/resources/3d-midj-dalia-dpb-ts-dae.zip>  
[.dxf Dalia DPB TS \(zip\)](https://www.midj.com/images/uploads/resources/3d-midj-dalia-dpb-ts-dxf.zip) - <https://www.midj.com/images/uploads/resources/3d-midj-dalia-dpb-ts-dxf.zip>  
[.obj Dalia DPB TS \(zip\)](https://www.midj.com/images/uploads/resources/3d-midj-dalia-dpb-ts-obj.zip) - <https://www.midj.com/images/uploads/resources/3d-midj-dalia-dpb-ts-obj.zip>  
[.stl Dalia DPB TS \(zip\)](https://www.midj.com/images/uploads/resources/3d-midj-dalia-dpb-ts-stl.zip) - <https://www.midj.com/images/uploads/resources/3d-midj-dalia-dpb-ts-stl.zip>

## Materials Certifications

### Dark green metal

The technologies used in the previous phase of powder coating play a fundamental role in the final result of the processing. They are in fact essential to increase adherence paint on the metal surface and then guarantee its duration over time. The metal frames, following a total cleaning of the surface, pass through chemical conversion processes, creating a compact base that allows for better adhesion of the subsequent treatment. In the last phase the object subjected to the powder coating process is placed in a polymerization oven, going to form an adherent and extremely tight layer durable. This particular paint job is ideal for outdoor use.

To clean the surface, use a damp microfiber cloth with neutral soap or specific metal cleaning products. Avoid hitting or rubbing the surface with sharp objects. Do not use scourers or other abrasive materials, since they would inevitably scratch the surface. Do not leave rusty iron objects on the surface for too long.

These surface treatments are not suitable for outdoor use, but they guarantee excellent resistance to

MIDJ®



# Dalia PA L\_R TS

## Armchair

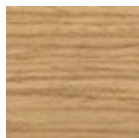
design Beatriz Sempere, 2017

Dalia armchair with high backrest and four leg wooden base.

Upholstered shell in leather, faux leather or custom fabric.

## Colors and Materials

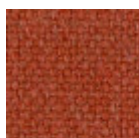
### Structure



**Lacquered ash**

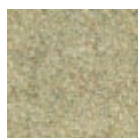
11 Colors

### Coating



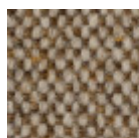
**Cotton Club fabric**

14 Colors



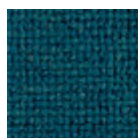
**Fenix Wool fabric**

16 Colors



**Main Line Flax fabric**

16 Colors



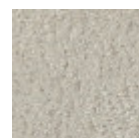
**Manhattan fabric**

13 Colors



**Mirage fabric**

15 Colors



**Novabuk fabric**

17 Colors



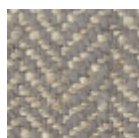
**Tessuto Oceanic**

13 Colors



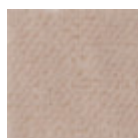
**Remix 3 fabric**

19 Colors



**Second fabric**

11 Colors



**Velvet Superb**

15 Colors



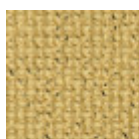
**Uniform Melange Fabric**

7 Colors



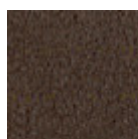
**Visual fabric**

13 Colors



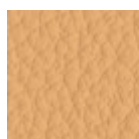
**Yoredale fabric**

14 Colors



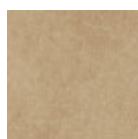
**Vintage leather**

8 Colors



**Fiore leather**

21 Colors



**Vintage faux leather**

12 Colors



**Secret faux leather**

23 Colors

## Dimensions



## Volumetric Details

**Weight** 11.15 Kg

**Volume** 0.41 mc

**Package** 1

	cm	inch
A	98	38.6
B	57	22.4
C	62	24.4
D	46	18.1
E	65	25.6

## Downloads

**.3ds Dalia PA L\_R TS (zip)** - <https://www.midj.com/images/uploads/resources/3d-midj-dalia-pa-l-ts-r-3ds.zip>

**.dae Dalia PA L\_R TS (zip)** - <https://www.midj.com/images/uploads/resources/3d-midj-dalia-pa-l-ts-r-dae.zip>

**.dxf Dalia PA L\_R TS (zip)** - <https://www.midj.com/images/uploads/resources/3d-midj-dalia-pa-l-ts-r-dxf.zip>

**.obj Dalia PA L\_R TS (zip)** - <https://www.midj.com/images/uploads/resources/3d-midj-dalia-pa-l-ts-r-obj.zip>

**.stl Dalia PA L\_R TS (zip)** - <https://www.midj.com/images/uploads/resources/3d-midj-dalia-pa-l-ts-r-stl.zip>

## Materials Certifications

### Lacquered ash

Ash wood is durable material, with good resistance and flexibility. Thanks to its porosity, it is ideal to be lacquered. Its original color is quite light: it can range from light blond, to pink and pale brown, with possible shades of green. In our set of samples, it is available in the natural finish and in numerous color variations: from the classic wood effects to the most pop colors of the moment. The ash used for our materials is European.

#### CLEANING AND MAINTENANCE

Ash is an easy-to-clean wood: to remove dust or light stains, rub the surface with a soft cloth, if necessary moistened in a solution of hot water or white vinegar, to help eliminate stains without altering the beauty and shine of the wood. Always dry the surface. In addition, you can choose to use specific products for wooden furniture.

These tips are cleaning recommendations and do not guarantee complete stain removal. We recommend that you always test the cleaning method on a hidden part of the item to check the resistance of the color.

Colour samples are to be considered approximate for each product. Slight color differences between a lot and the other are to be considered normal.

## Materials Certifications

### Cotton Club fabric

COMPOSITION: 70 % COT; 10% PES; 10% ACR; 10% AF

Abrasion resistance (Martindale) 100.000 cycles

Cotton Club by Flukso is a fabric made from latest generation regenerated cotton yarns. To create this fabric, specific fixing techniques were used, that give it and help maintaining a natural, slightly wavy and vibrated look.

#### CLEANING AND MAINTENANCE

Regular cleaning is important to extend the life of the coating, and keep its appearance unchanged. Dust and dirt can wear out the coating.

REGULAR CLEANING: vacuum frequently, at least once a week, at a power equal to half the device in use, choosing a smooth spout, without brushing.

STAIN REMOVAL: in case of slight stains, promptly clean the surface. Remove excess liquids or hard parts of dirt with a clean cloth, then proceed on the residue of the stain with a damp cloth or a neutral soap solution.



# Dalia PA M\_M TS

## Armchair

design Beatriz Sempere, 2017

Dalia armchair with high backrest and four leg base in lacquered or chrome metal.

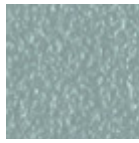
Shell upholstered in leather, faux leather or fabric.

### Colors and Materials

#### Structure



Papaya orange steel



Light blue metal



White steel



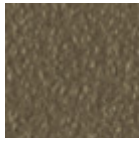
Bronze metal



Ash grey metal



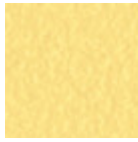
Sand steel



Fango steel



Golden yellow metal



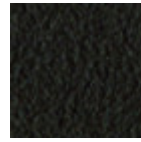
Pastel yellow steel



Grafite metal



Light grey steel



Brown steel



Black steel



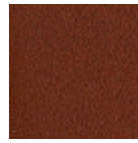
Ocher steel



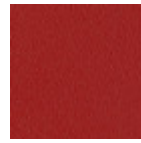
Facepowder pink metal



Red steel



Bulgaro red metal



Cherry red metal



Pine green steel



Sage green metal



Dark green metal



Chrome

#### Coating



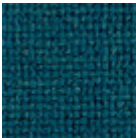
Cotton Club fabric  
14 Colors



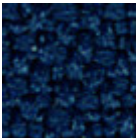
Fenix Wool fabric  
16 Colors



Main Line Flax fabric  
16 Colors



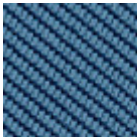
Manhattan fabric  
13 Colors



Mirage fabric  
15 Colors



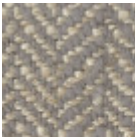
Novabuk fabric  
17 Colors



Tessuto Oceanic  
13 Colors



Remix 3 fabric  
19 Colors



Second fabric  
11 Colors



Velvet Superb  
15 Colors



Uniform Melange Fabric  
7 Colors



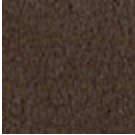
Visual fabric  
13 Colors



Yoredale fabric  
14 Colors



Vintage faux leather  
12 Colors



Vintage leather  
8 Colors



Fiore leather  
21 Colors



Secret faux leather  
23 Colors

## Dimensions



	cm	inch
A	97	38.2
B	57	22.4
C	62	24.4
D	47	18.5
E	65	25.6

## Volumetric Details

Weight 11.4 Kg  
Volume 0.48 mc  
Package 1

## Downloads

- .dae Dalia PA M\_M TS (zip) - <https://www.midj.com/images/uploads/resources/3d-midj-dalia-pa-m-ts-m-dae.zip>
- .dxf Dalia PA M\_M TS (zip) - <https://www.midj.com/images/uploads/resources/3d-midj-dalia-pa-m-ts-m-dxf.zip>
- .obj Dalia PA M\_M TS (zip) - <https://www.midj.com/images/uploads/resources/3d-midj-dalia-pa-m-ts-m-obj.zip>
- .stl Dalia PA M\_M TS (zip) - <https://www.midj.com/images/uploads/resources/3d-midj-dalia-pa-m-ts-m-stl.zip>
- .3ds Dalia PA M\_M TS (zip) - <https://www.midj.com/images/uploads/resources/3d-midj-dalia-pa-m-ts-m-3ds.zip>

## Materials Certifications

### Dark green metal

The technologies used in the previous phase of powder coating play a fundamental role in the final result of the processing. They are in fact essential to increase adherence paint on the metal surface and then guarantee its duration over time. The metal frames, following a total cleaning of the surface, pass through chemical conversion processes, creating a compact base that allows for better adhesion of the subsequent treatment. In the last phase the object subjected to the powder coating process is placed in a polymerization oven, going to form an adherent and extremely tight layer durable. This particular paint job is ideal for outdoor use.

To clean the surface, use a damp microfiber cloth with neutral soap or specific metal cleaning products. Avoid hitting or rubbing the surface with sharp objects. Do not use scourers or other abrasive materials, since they would inevitably scratch the surface. Do not leave rusty iron objects on the surface for too long.

These surface treatments are not suitable for outdoor use, but they guarantee excellent resistance to



# Dalia PA M\_Q TS

## Armchair

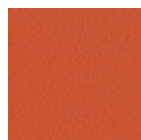
design Beatriz Sempere, 2017

Dalia armchair with high backrest and four leg base in lacquered metal.

Shell upholstered in leather, faux leather or fabric.

### Colors and Materials

#### Structure



Papaya orange steel



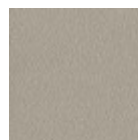
Light blue metal



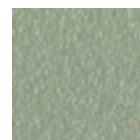
White steel



Bronze metal



Ash grey metal



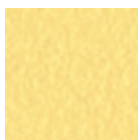
Sand steel



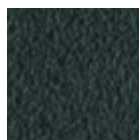
Fango steel



Golden yellow metal



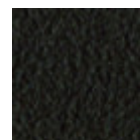
Pastel yellow steel



Grafite metal



Light grey steel



Brown steel



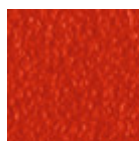
Black steel



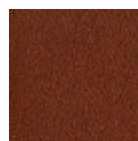
Ocher steel



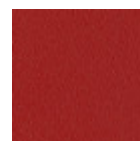
Facepowder pink  
metal



Red steel



Bulgaro red metal



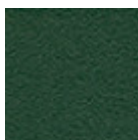
Cherry red metal



Pine green steel



Sage green metal



Dark green metal

#### Coating



Cotton Club fabric  
14 Colors



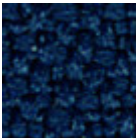
Fenix Wool fabric  
16 Colors



Main Line Flax fabric  
16 Colors



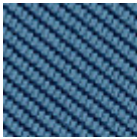
Manhattan fabric  
13 Colors



Mirage fabric  
15 Colors



Novabuk fabric  
17 Colors



Tessuto Oceanic  
13 Colors



Remix 3 fabric  
19 Colors



Second fabric  
11 Colors



Velvet Superb  
15 Colors



Uniform Melange  
Fabric  
7 Colors



Visual fabric  
13 Colors



Yoredale fabric  
14 Colors



Vintage leather  
8 Colors



Fiore leather  
21 Colors

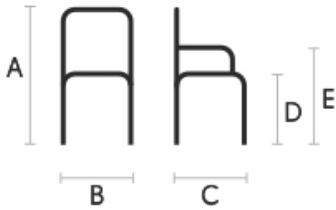


Secret faux leather  
23 Colors



Vintage faux leather  
12 Colors

## Dimensions



	cm	inch
A	97	38.2
B	57	22.4
C	62	24.4
D	46	18.1
E	65	25.6

## Volumetric Details

Weight 11.8 Kg  
Volume 0.41 mc  
Package 1

## Downloads

- .dae Dalia PA M\_Q TS (zip) - <https://www.midj.com/images/uploads/resources/3d-midj-dalia-pa-m-ts-q-dae.zip>
- .dxf Dalia PA M\_Q TS (zip) - <https://www.midj.com/images/uploads/resources/3d-midj-dalia-pa-m-ts-q-dxf.zip>
- .obj Dalia PA M\_Q TS (zip) - <https://www.midj.com/images/uploads/resources/3d-midj-dalia-pa-m-ts-q-obj.zip>
- .stl Dalia PA M\_Q TS (zip) - <https://www.midj.com/images/uploads/resources/3d-midj-dalia-pa-m-ts-q-stl.zip>
- .3ds Dalia PA M\_Q TS (zip) - <https://www.midj.com/images/uploads/resources/3d-midj-dalia-pa-m-ts-q-3ds.zip>

## Materials Certifications

### Dark green metal

The technologies used in the previous phase of powder coating play a fundamental role in the final result of the processing. They are in fact essential to increase adherence paint on the metal surface and then guarantee its duration over time. The metal frames, following a total cleaning of the surface, pass through chemical conversion processes, creating a compact base that allows for better adhesion of the subsequent treatment. In the last phase the object subjected to the powder coating process is placed in a polymerization oven, going to form an adherent and extremely tight layer durable. This particular paint job is ideal for outdoor use.

To clean the surface, use a damp microfiber cloth with neutral soap or specific metal cleaning products. Avoid hitting or rubbing the surface with sharp objects. Do not use scourers or other abrasive materials, since they would inevitably scratch the surface. Do not leave rusty iron objects on the surface for too long.

These surface treatments are not suitable for outdoor use, but they guarantee excellent resistance to



# Dalia PA M\_T TS

## Armchair

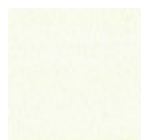
design Beatriz Sempere, 2017

Dalia armchair with high backrest and sled base in lacquered metal.

Shell upholstered in leather, faux leather and fabric.

### Colors and Materials

#### Structure



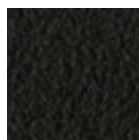
White steel



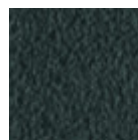
Black steel



Sand steel



Brown steel



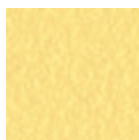
Grafite metal



Fango steel



Bronze metal



Pastel yellow steel



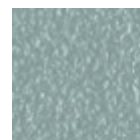
Ocher steel



Red steel



Sage green metal



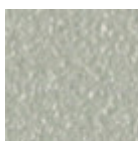
Light blue metal



Ocean blue steel



Facepowder pink  
metal

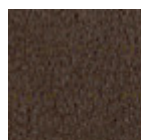


Light grey steel

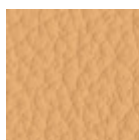


Chrome

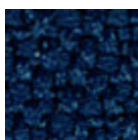
#### Coating



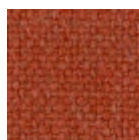
Vintage leather  
8 Colors



Fiore leather  
21 Colors



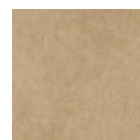
Mirage fabric  
15 Colors



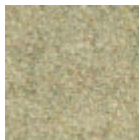
Cotton Club fabric  
14 Colors



Secret faux leather  
23 Colors



Vintage faux leather  
12 Colors



**Fenix Wool fabric**  
16 Colors



**Visual fabric**  
13 Colors



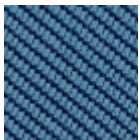
**Main Line Flax fabric**  
16 Colors



**Velvet Superb**  
15 Colors



**Second fabric**  
11 Colors



**Tessuto Oceanic**  
13 Colors

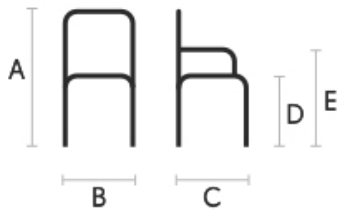


**Manhattan fabric**  
13 Colors



**Yoredale fabric**  
14 Colors

## Dimensions



	cm	inch
A	99	39
B	57	22.4
C	62	24.4
D	46	18.1
E	65	25.6

## Volumetric Details

**Weight** 11.75 Kg  
**Volume** 0.41 mc  
**Package** 1

## Downloads

- [.3ds Dalia PA M\\_T TS \(zip\)](https://www.midj.com/images/uploads/resources/3d-midj-dalia-pa-m-ts-t-3ds.zip) - <https://www.midj.com/images/uploads/resources/3d-midj-dalia-pa-m-ts-t-3ds.zip>
- [.dae Dalia PA M\\_T TS \(zip\)](https://www.midj.com/images/uploads/resources/3d-midj-dalia-pa-m-ts-t-dae.zip) - <https://www.midj.com/images/uploads/resources/3d-midj-dalia-pa-m-ts-t-dae.zip>
- [.dxf Dalia PA M\\_T TS \(zip\)](https://www.midj.com/images/uploads/resources/3d-midj-dalia-pa-m-ts-t-dxf.zip) - <https://www.midj.com/images/uploads/resources/3d-midj-dalia-pa-m-ts-t-dxf.zip>
- [.obj Dalia PA M\\_T TS \(zip\)](https://www.midj.com/images/uploads/resources/3d-midj-dalia-pa-m-ts-t-obj.zip) - <https://www.midj.com/images/uploads/resources/3d-midj-dalia-pa-m-ts-t-obj.zip>
- [.stl Dalia PA M\\_T TS \(zip\)](https://www.midj.com/images/uploads/resources/3d-midj-dalia-pa-m-ts-t-stl.zip) - <https://www.midj.com/images/uploads/resources/3d-midj-dalia-pa-m-ts-t-stl.zip>

## Materials Certifications

### Vintage leather

FIRE RESISTANCE:  
BS 5852 : 1979  
BS EN 1021-1-2 : 2006

Vintage leather is a natural product and this is why it can show signs such as wrinkles, veining and scars that indicate the animal origin of the product. These signs, together with slightly color differences, are distinctive elements that enhance its beauty and distinguish it from faux leather or other artificial products. Vintage is a bovine leather from animals of European origin. This product is obtained starting from Nabuck leather, which is slightly equalized with aniline, and hand abraded to give an aged effect. The hand is very warm and silky.

### CLEANING AND MAINTENANCE

Dust the leather product regularly with a soft and dry cloth. In case of stains, rub the affected area with a soft and clean cloth, moistened with water or use a light solution of water and mild soap, to be applied gently with a wet cloth. Move the cloth in a circular direction, starting from edges of the stain towards the center. Rinse well with a damp cloth. Dry immediately after treatment. Avoid direct sunlight and exposure to heat sources.

We recommend that you always test the cleaning method on a hidden part of the item to check the resistance of the color. These tips are cleaning recommendations and do not guarantee complete stain removal. In case of large



# Dalia PB L\_R TS Armchair

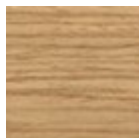
design Beatriz Sempere, 2017

Dalia armchair with low backrest and four leg wooden base.

Upholstered shell in leather, faux leather or custom fabric.

## Colors and Materials

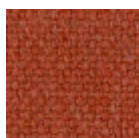
### Structure



**Lacquered ash**

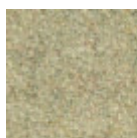
11 Colors

### Coating



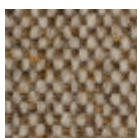
**Cotton Club fabric**

14 Colors



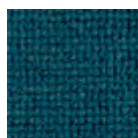
**Fenix Wool fabric**

16 Colors



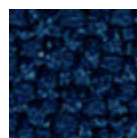
**Main Line Flax fabric**

16 Colors



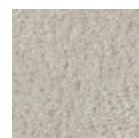
**Manhattan fabric**

13 Colors



**Mirage fabric**

15 Colors



**Novabuk fabric**

17 Colors



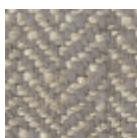
**Tessuto Oceanic**

13 Colors



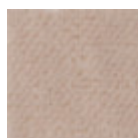
**Remix 3 fabric**

19 Colors



**Second fabric**

11 Colors



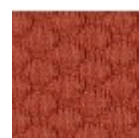
**Velvet Superb**

15 Colors



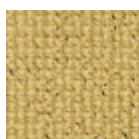
**Uniform Melange  
Fabric**

7 Colors



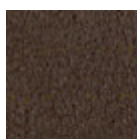
**Visual fabric**

13 Colors



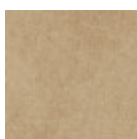
**Yoredale fabric**

14 Colors



**Vintage leather**

8 Colors



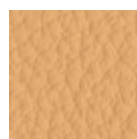
**Vintage faux leather**

12 Colors



**Secret faux leather**

23 Colors



**Fiore leather**

21 Colors

## Dimensions



## Volumetric Details

**Weight** 10.1 Kg  
**Volume** 0.35 mc  
**Package** 1

	cm	inch
A	84	33.1
B	57	22.4
C	58	22.8
D	46	18.1
E	65	25.6

## Downloads

[.3ds Dalia PB L\\_R TS \(zip\)](https://www.midj.com/images/uploads/resources/3d-midj-dalia-pb-l-ts-r-3ds.zip) - <https://www.midj.com/images/uploads/resources/3d-midj-dalia-pb-l-ts-r-3ds.zip>  
[.dae Dalia PB L\\_R TS \(zip\)](https://www.midj.com/images/uploads/resources/3d-midj-dalia-pb-l-ts-r-dae.zip) - <https://www.midj.com/images/uploads/resources/3d-midj-dalia-pb-l-ts-r-dae.zip>  
[.dxf Dalia PB L\\_R TS \(zip\)](https://www.midj.com/images/uploads/resources/3d-midj-dalia-pb-l-ts-r-dxf.zip) - <https://www.midj.com/images/uploads/resources/3d-midj-dalia-pb-l-ts-r-dxf.zip>  
[.obj Dalia PB L\\_R TS \(zip\)](https://www.midj.com/images/uploads/resources/3d-midj-dalia-pb-l-ts-r-obj.zip) - <https://www.midj.com/images/uploads/resources/3d-midj-dalia-pb-l-ts-r-obj.zip>  
[.stl Dalia PB L\\_R TS \(zip\)](https://www.midj.com/images/uploads/resources/3d-midj-dalia-pb-l-ts-r-stl.zip) - <https://www.midj.com/images/uploads/resources/3d-midj-dalia-pb-l-ts-r-stl.zip>

## Materials Certifications

### Lacquered ash

Ash wood is durable material, with good resistance and flexibility. Thanks to its porosity, it is ideal to be lacquered. Its original color is quite light: it can range from light blond, to pink and pale brown, with possible shades of green. In our set of samples, it is available in the natural finish and in numerous color variations: from the classic wood effects to the most pop colors of the moment. The ash used for our materials is European.

#### CLEANING AND MAINTENANCE

Ash is an easy-to-clean wood: to remove dust or light stains, rub the surface with a soft cloth, if necessary moistened in a solution of hot water or white vinegar, to help eliminate stains without altering the beauty and shine of the wood. Always dry the surface. In addition, you can choose to use specific products for wooden furniture.

These tips are cleaning recommendations and do not guarantee complete stain removal. We recommend that you always test the cleaning method on a hidden part of the item to check the resistance of the color.

Colour samples are to be considered approximate for each product. Slight color differences between a lot and the other are to be considered normal.

## Materials Certifications

### Cotton Club fabric

COMPOSITION: 70 % COT; 10% PES; 10% ACR; 10% AF  
Abrasion resistance (Martindale) 100.000 cycles

Cotton Club by Flukso is a fabric made from latest generation regenerated cotton yarns. To create this fabric, specific fixing techniques were used, that give it and help maintaining a natural, slightly wavy and vibrated look.

#### CLEANING AND MAINTENANCE

Regular cleaning is important to extend the life of the coating, and keep its appearance unchanged. Dust and dirt can wear out the coating.

REGULAR CLEANING: vacuum frequently, at least once a week, at a power equal to half the device in use, choosing a smooth spout, without brushing.

STAIN REMOVAL: in case of slight stains, promptly clean the surface. Remove excess liquids or hard parts of dirt with a clean cloth, then proceed on the residue of the stain with a damp cloth or a neutral soap solution.



# Dalia PB M\_M TS

## Armchair

design Beatriz Sempere, 2017

Dalia armchair with low backrest and four leg base in lacquered or chrome metal.

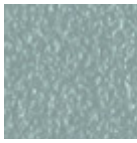
Shell upholstered in leather, faux leather or fabric.

### Colors and Materials

#### Structure



Papaya orange steel



Light blue metal



White steel



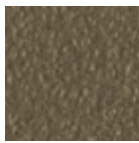
Bronze metal



Ash grey metal



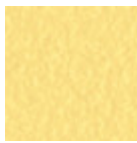
Sand steel



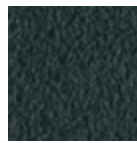
Fango steel



Golden yellow metal



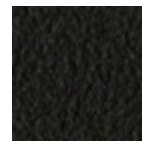
Pastel yellow steel



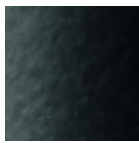
Grafite metal



Light grey steel



Brown steel



Black steel



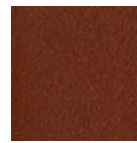
Ocher steel



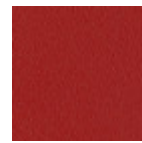
Facepowder pink metal



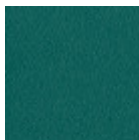
Red steel



Bulgaro red metal



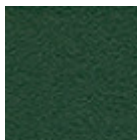
Cherry red metal



Pine green steel



Sage green metal



Dark green metal



Chrome

#### Coating



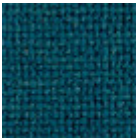
Cotton Club fabric  
14 Colors



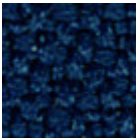
Fenix Wool fabric  
16 Colors



Main Line Flax fabric  
16 Colors



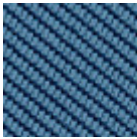
Manhattan fabric  
13 Colors



Mirage fabric  
15 Colors



Novabuk fabric  
17 Colors



Tessuto Oceanic  
13 Colors



Remix 3 fabric  
19 Colors



Second fabric  
11 Colors



Velvet Superb  
15 Colors



Uniform Melange Fabric  
7 Colors



Visual fabric  
13 Colors



Yoredale fabric  
14 Colors



Vintage leather  
8 Colors



Vintage faux leather  
12 Colors



Secret faux leather  
23 Colors



Fiore leather  
21 Colors

## Dimensions



	cm	inch
A	83	32.7
B	57	22.4
C	60	23.6
D	47	18.5
E	65	25.6

## Volumetric Details

Weight 11.1 Kg  
Volume 0.35 mc  
Package 1

## Downloads

- .3ds Dalia PB M TS\_M (zip) - <https://www.midj.com/images/uploads/resources/3d-midj-dalia-pb-m-ts-m-3ds.zip>
- .dae Dalia PB M TS\_M (zip) - <https://www.midj.com/images/uploads/resources/3d-midj-dalia-pb-m-ts-m-dae.zip>
- .3dwg Dalia PB M TS\_M (zip) - <https://www.midj.com/images/uploads/resources/3d-midj-dalia-pb-m-ts-m-dwg.zip>
- .dxf Dalia PB M TS\_M (zip) - <https://www.midj.com/images/uploads/resources/3d-midj-dalia-pb-m-ts-m-dxf.zip>
- .obj Dalia PB M TS\_M (zip) - <https://www.midj.com/images/uploads/resources/3d-midj-dalia-pb-m-ts-m-obj.zip>
- .stl Dalia PB M TS\_M (zip) - <https://www.midj.com/images/uploads/resources/3d-midj-dalia-pb-m-ts-m-stl.zip>

## Materials Certifications

### Dark green metal

The technologies used in the previous phase of powder coating play a fundamental role in the final result of the processing. They are in fact essential to increase adherence paint on the metal surface and then guarantee its duration over time. The metal frames, following a total cleaning of the surface, pass through chemical conversion processes, creating a compact base that allows for better adhesion of the subsequent treatment. In the last phase the object subjected to the powder coating process is placed in a polymerization oven, going to form an adherent and extremely tight layer durable. This particular paint job is ideal for outdoor use.

To clean the surface, use a damp microfiber cloth with neutral soap or specific metal cleaning products. Avoid hitting or rubbing the surface with sharp objects. Do not use scourers or other abrasive materials, since they would inevitably scratch the surface. Do not leave rusty iron objects on the surface for too long.



# Dalia PB M\_Q TS Armchair

design Beatriz Sempere, 2017

Dalia armchair with low backrest and four leg base in lacquered metal.

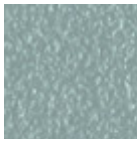
Shell upholstered in leather, faux leather or fabric.

## Colors and Materials

### Structure



Papaya orange steel



Light blue metal



White steel



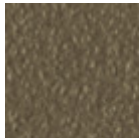
Bronze metal



Ash grey metal



Sand steel



Fango steel



Golden yellow metal



Pastel yellow steel



Grafite metal



Light grey steel



Brown steel



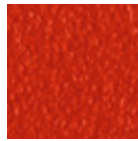
Black steel



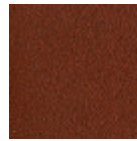
Ocher steel



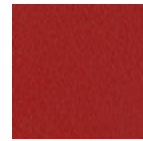
Facepowder pink  
metal



Red steel



Bulgaro red metal



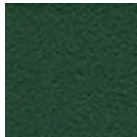
Cherry red metal



Pine green steel



Sage green metal



Dark green metal

### Coating



Cotton Club fabric  
14 Colors



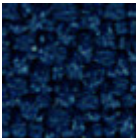
Fenix Wool fabric  
16 Colors



Main Line Flax fabric  
16 Colors



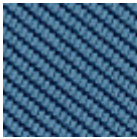
Manhattan fabric  
13 Colors



Mirage fabric  
15 Colors



Novabuk fabric  
17 Colors



Tessuto Oceanic  
13 Colors



Remix 3 fabric  
19 Colors



Second fabric  
11 Colors



Velvet Superb  
15 Colors



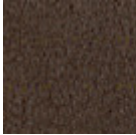
Uniform Melange  
Fabric  
7 Colors



Visual fabric  
13 Colors



Yoredale fabric  
14 Colors



Vintage leather  
8 Colors



Vintage faux leather  
12 Colors



Secret faux leather  
23 Colors



Fiore leather  
21 Colors

## Dimensions



	cm	inch
A	83	32.7
B	57	22.4
C	58	22.8
D	46	18.1
E	65	25.6

## Volumetric Details

Weight 11.5 Kg  
Volume 0.34 mc  
Package 1

## Downloads

- .3ds Dalia PB M\_Q TS (zip) - <https://www.midj.com/images/uploads/resources/3d-midj-dalia-pb-m-ts-q-3ds.zip>
- .dae Dalia PB M\_Q TS (zip) - <https://www.midj.com/images/uploads/resources/3d-midj-dalia-pb-m-ts-q-dae.zip>
- .dwg Dalia PB M\_Q TS (zip) - <https://www.midj.com/images/uploads/resources/3d-midj-dalia-pb-m-ts-q-dwg.zip>
- .dxf Dalia PB M\_Q TS (zip) - <https://www.midj.com/images/uploads/resources/3d-midj-dalia-pb-m-ts-q-dxf.zip>
- .obj Dalia PB M\_Q TS (zip) - <https://www.midj.com/images/uploads/resources/3d-midj-dalia-pb-m-ts-q-obj.zip>
- .stl Dalia PB M\_Q TS (zip) - <https://www.midj.com/images/uploads/resources/3d-midj-dalia-pb-m-ts-q-stl.zip>

## Materials Certifications

### Dark green metal

The technologies used in the previous phase of powder coating play a fundamental role in the final result of the processing. They are in fact essential to increase adherence paint on the metal surface and then guarantee its duration over time. The metal frames, following a total cleaning of the surface, pass through chemical conversion processes, creating a compact base that allows for better adhesion of the subsequent treatment. In the last phase the object subjected to the powder coating process is placed in a polymerization oven, going to form an adherent and extremely tight layer durable. This particular paint job is ideal for outdoor use.

To clean the surface, use a damp microfiber cloth with neutral soap or specific metal cleaning products. Avoid hitting or rubbing the surface with sharp objects. Do not use scourers or other abrasive materials, since they would inevitably scratch the surface. Do not leave rusty iron objects on the surface for too long.



# Dalia PB M\_T TS

## Armchair

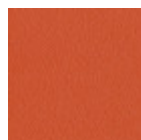
design Beatriz Sempere, 2017

Dalia armchair with low backrest and sled base in lacquered metal.

Shell upholstered in leather, faux leather and fabric.

### Colors and Materials

#### Structure



Papaya orange steel



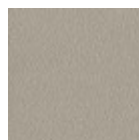
Light blue metal



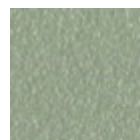
White steel



Bronze metal



Ash grey metal



Sand steel



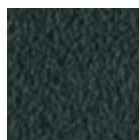
Fango steel



Golden yellow metal



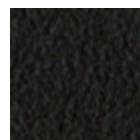
Pastel yellow steel



Grafite metal



Light grey steel



Brown steel



Black steel



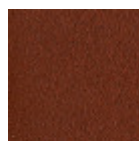
Ocher steel



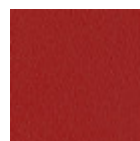
Facepowder pink metal



Red steel



Bulgaro red metal



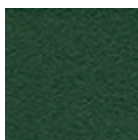
Cherry red metal



Pine green steel



Sage green metal



Dark green metal

#### Coating



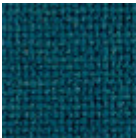
Cotton Club fabric  
14 Colors



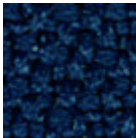
Fenix Wool fabric  
16 Colors



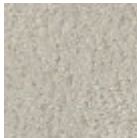
Main Line Flax fabric  
16 Colors



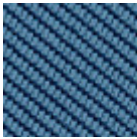
Manhattan fabric  
13 Colors



Mirage fabric  
15 Colors



Novabuk fabric  
17 Colors



Tessuto Oceanic  
13 Colors



Remix 3 fabric  
19 Colors



Second fabric  
11 Colors



Velvet Superb  
15 Colors



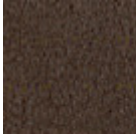
Uniform Melange Fabric  
7 Colors



Visual fabric  
13 Colors



Yoredale fabric  
14 Colors



Vintage leather  
8 Colors



Vintage faux leather  
12 Colors



Secret faux leather  
23 Colors



Fiore leather  
21 Colors

## Dimensions



	cm	inch
A	85	33.5
B	57	22.4
C	58	22.8
D	46	18.1
E	65	25.6

## Volumetric Details

Weight 11.4 Kg  
Volume 0.35 mc  
Package 1

## Downloads

- .3ds Dalia PB M\_T TS (zip) - <https://www.midj.com/images/uploads/resources/3d-midj-dalia-pb-m-ts-t-3ds.zip>
- .dae Dalia PB M\_T TS (zip) - <https://www.midj.com/images/uploads/resources/3d-midj-dalia-pb-m-ts-t-dae.zip>
- .dxf Dalia PB M\_T TS (zip) - <https://www.midj.com/images/uploads/resources/3d-midj-dalia-pb-m-ts-t-dxf.zip>
- .obj Dalia PB M\_T TS (zip) - <https://www.midj.com/images/uploads/resources/3d-midj-dalia-pb-m-ts-t-obj.zip>
- .stl Dalia PB M\_T TS (zip) - <https://www.midj.com/images/uploads/resources/3d-midj-dalia-pb-m-ts-t-stl.zip>

## Materials Certifications

### Dark green metal

The technologies used in the previous phase of powder coating play a fundamental role in the final result of the processing. They are in fact essential to increase adherence paint on the metal surface and then guarantee its duration over time. The metal frames, following a total cleaning of the surface, pass through chemical conversion processes, creating a compact base that allows for better adhesion of the subsequent treatment. In the last phase the object subjected to the powder coating process is placed in a polymerization oven, going to form an adherent and extremely tight layer durable. This particular paint job is ideal for outdoor use.

To clean the surface, use a damp microfiber cloth with neutral soap or specific metal cleaning products. Avoid hitting or rubbing the surface with sharp objects. Do not use scourers or other abrasive materials, since they would inevitably scratch the surface. Do not leave rusty iron objects on the surface for too long.

These surface treatments are not suitable for outdoor use, but they guarantee excellent resistance to



# Dalia S DS TS Chair

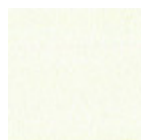
design Beatriz Sempere, 2017

Dalia task swivel and height adjustable chair with five star base in lacquered metal.

Shell upholstered in leather, faux leather and fabric.

## Colors and Materials

### Structure



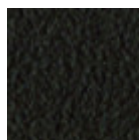
White steel



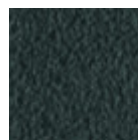
Black steel



Sand steel



Brown steel



Grafite metal



Fango steel



Bronze metal



Pastel yellow steel



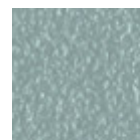
Ocher steel



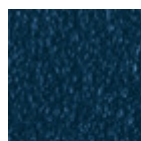
Red steel



Sage green metal



Light blue metal



Ocean blue steel

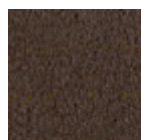


Facepowder pink  
metal

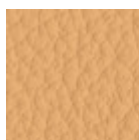


Light grey steel

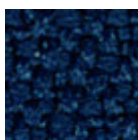
### Coating



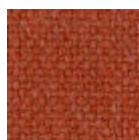
Vintage leather  
8 Colors



Fiore leather  
21 Colors



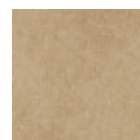
Mirage fabric  
15 Colors



Cotton Club fabric  
14 Colors



Secret faux leather  
23 Colors



Vintage faux leather  
12 Colors



**Fenix Wool fabric**  
16 Colors



**Visual fabric**  
13 Colors



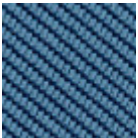
**Main Line Flax fabric**  
16 Colors



**Velvet Superb**  
15 Colors



**Second fabric**  
11 Colors



**Tessuto Oceanic**  
13 Colors

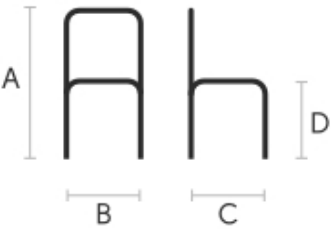


**Manhattan fabric**  
13 Colors



**Yoredale fabric**  
14 Colors

## Dimensions



	cm	inch
A	87/95	34.3/37.4
B	70	27.6
C	60	23.6
D	48/56	18.9/22.1

## Volumetric Details

**Weight** 12 Kg  
**Volume** 0.34 mc  
**Package** 1

## Downloads

- [.dae Dalia S DS TS \(zip\)](#) - <https://www.midj.com/images/uploads/resources/3d-midj-dalia-ds-ts-dae.zip>
- [.dxf Dalia S DS TS \(zip\)](#) - <https://www.midj.com/images/uploads/resources/3d-midj-dalia-ds-ts-dxf.zip>
- [.obj Dalia S DS TS \(zip\)](#) - <https://www.midj.com/images/uploads/resources/3d-midj-dalia-ds-ts-obj.zip>
- [.stl Dalia S DS TS \(zip\)](#) - <https://www.midj.com/images/uploads/resources/3d-midj-dalia-ds-ts-stl.zip>
- [.3ds Dalia S DS TS \(zip\)](#) - <https://www.midj.com/images/uploads/resources/3d-midj-dalia-ds-ts-3ds.zip>

## Materials Certifications

### Vintage leather

**FIRE RESISTANCE:**  
BS 5852 : 1979  
BS EN 1021-1-2 : 2006

Vintage leather is a natural product and this is why it can show signs such as wrinkles, veining and scars that indicate the animal origin of the product. These signs, together with slightly color differences, are distinctive elements that enhance its beauty and distinguish it from faux leather or other artificial products. Vintage is a bovine leather from animals of European origin. This product is obtained starting from Nabuck leather, which is slightly equalized with aniline, and hand abraded to give an aged effect. The hand is very warm and silky.

### CLEANING AND MAINTENANCE

Dust the leather product regularly with a soft and dry cloth. In case of stains, rub the affected area with a soft and clean cloth, moistened with water or use a light solution of water and mild soap, to be applied gently with a wet cloth. Move the cloth in a circular direction, starting from edges of the stain towards the center. Rinse well with a damp cloth. Dry immediately after treatment. Avoid direct sunlight and exposure to heat sources.

We recommend that you always test the cleaning method on a hidden part of the item to check the resistance of the color. These tips are cleaning recommendations and do not guarantee complete stain removal. In case of large



# Dalia S L\_R TS Chair

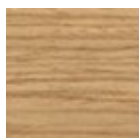
design Beatriz Sempere, 2017

Dalia chair with four legs and wooden base.

Upholstered shell in leather, faux leather or custom fabric.

## Colors and Materials

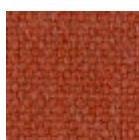
### Structure



**Lacquered ash**

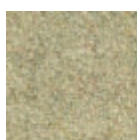
11 Colors

### Coating



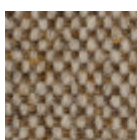
**Cotton Club fabric**

14 Colors



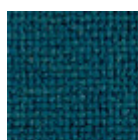
**Fenix Wool fabric**

16 Colors



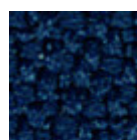
**Main Line Flax fabric**

16 Colors



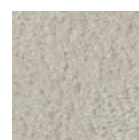
**Manhattan fabric**

13 Colors



**Mirage fabric**

15 Colors



**Novabuk fabric**

17 Colors



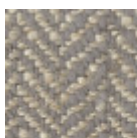
**Tessuto Oceanic**

13 Colors



**Remix 3 fabric**

19 Colors



**Second fabric**

11 Colors



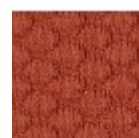
**Velvet Superb**

15 Colors



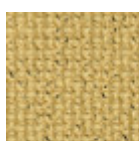
**Uniform Melange Fabric**

7 Colors



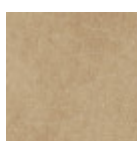
**Visual fabric**

13 Colors



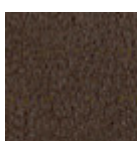
**Yoredale fabric**

14 Colors



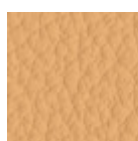
**Vintage faux leather**

12 Colors



**Vintage leather**

8 Colors



**Fiore leather**

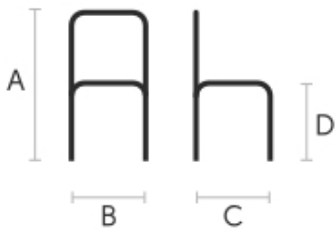
21 Colors



**Secret faux leather**

23 Colors

## Dimensions



## Volumetric Details

**Weight** 9 Kg  
**Volume** 0.37 mc  
**Package** 1

	cm	inch
A	84	33.1
B	54	21.3
C	58	22.8
D	46	18.1

## Downloads

- [.dae Dalia S L\\_R TS \(zip\)](#) - <https://www.midj.com/images/uploads/resources/3d-midj-dalia-s-l-ts-r-dae.zip>  
[.dxf Dalia S L\\_R TS \(zip\)](#) - <https://www.midj.com/images/uploads/resources/3d-midj-dalia-s-l-ts-r-dxf.zip>  
[.obj Dalia S L\\_R TS \(zip\)](#) - <https://www.midj.com/images/uploads/resources/3d-midj-dalia-s-l-ts-r-obj.zip>  
[.stl Dalia S L\\_R TS \(zip\)](#) - <https://www.midj.com/images/uploads/resources/3d-midj-dalia-s-l-ts-r-stl.zip>  
[.3ds Dalia S L\\_R TS \(zip\)](#) - <https://www.midj.com/images/uploads/resources/3d-midj-dalia-s-l-ts-r-ts.zip>

## Materials Certifications

### Lacquered ash

Ash wood is durable material, with good resistance and flexibility. Thanks to its porosity, it is ideal to be lacquered. Its original color is quite light: it can range from light blond, to pink and pale brown, with possible shades of green. In our set of samples, it is available in the natural finish and in numerous color variations: from the classic wood effects to the most pop colors of the moment. The ash used for our materials is European.

#### CLEANING AND MAINTENANCE

Ash is an easy-to-clean wood: to remove dust or light stains, rub the surface with a soft cloth, if necessary moistened in a solution of hot water or white vinegar, to help eliminate stains without altering the beauty and shine of the wood. Always dry the surface. In addition, you can choose to use specific products for wooden furniture.

These tips are cleaning recommendations and do not guarantee complete stain removal. We recommend that you always test the cleaning method on a hidden part of the item to check the resistance of the color.

Colour samples are to be considered approximate for each product. Slight color differences between a lot and the other are to be considered normal.

## Materials Certifications

### Cotton Club fabric

COMPOSITION: 70 % COT; 10% PES; 10% ACR; 10% AF  
Abrasion resistance (Martindale) 100.000 cycles

Cotton Club by Flukso is a fabric made from latest generation regenerated cotton yarns. To create this fabric, specific fixing techniques were used, that give it and help maintaining a natural, slightly wavy and vibrated look.

#### CLEANING AND MAINTENANCE

Regular cleaning is important to extend the life of the coating, and keep its appearance unchanged. Dust and dirt can wear out the coating.

REGULAR CLEANING: vacuum frequently, at least once a week, at a power equal to half the device in use, choosing a smooth spout, without brushing.

STAIN REMOVAL: in case of slight stains, promptly clean the surface. Remove excess liquids or hard parts of dirt with a clean cloth, then proceed on the residue of the stain with a damp cloth or a neutral soap solution.



# Dalia S M\_M TS Chair

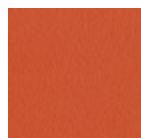
design Beatriz Sempere, 2017

Dalia chair with four leg base in lacquered or chrome metal.

Shell upholstered in leather, faux leather or fabric.

## Colors and Materials

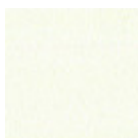
### Structure



Papaya orange steel



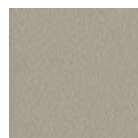
Light blue metal



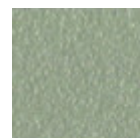
White steel



Bronze metal



Ash grey metal



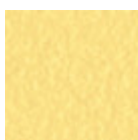
Sand steel



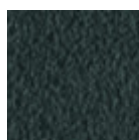
Fango steel



Golden yellow metal



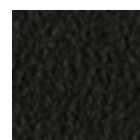
Pastel yellow steel



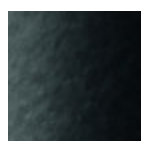
Grafite metal



Light grey steel



Brown steel



Black steel



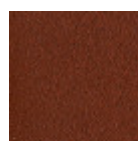
Ocher steel



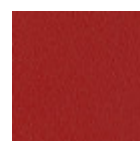
Facepowder pink metal



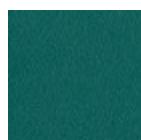
Red steel



Bulgaro red metal



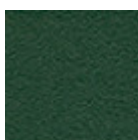
Cherry red metal



Pine green steel



Sage green metal



Dark green metal



Chrome

### Coating



Cotton Club fabric  
14 Colors



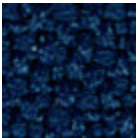
Fenix Wool fabric  
16 Colors



Main Line Flax fabric  
16 Colors



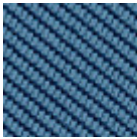
Manhattan fabric  
13 Colors



Mirage fabric  
15 Colors



Novabuk fabric  
17 Colors



Tessuto Oceanic  
13 Colors



Remix 3 fabric  
19 Colors



Second fabric  
11 Colors



Velvet Superb  
15 Colors



Uniform Melange Fabric  
7 Colors



Visual fabric  
13 Colors



Yoredale fabric  
14 Colors



Vintage faux leather  
12 Colors



Vintage leather  
8 Colors

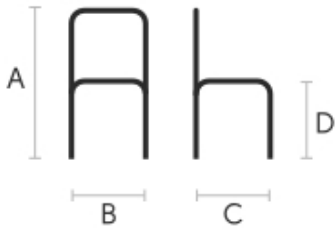


Fiore leather  
21 Colors



Secret faux leather  
23 Colors

## Dimensions



	cm	inch
A	83	32.7
B	54	21.3
C	60	23.6
D	47	18.5

## Volumetric Details

Weight 9.25 Kg  
Volume 0.32 mc  
Package 1

## Downloads

- .dae Dalia S M\_M TS (zip) - <https://www.midj.com/images/uploads/resources/3d-midj-dalia-s-m-ts-m-dae.zip>
- .dxf Dalia S M\_M TS (zip) - <https://www.midj.com/images/uploads/resources/3d-midj-dalia-s-m-ts-m-dxf.zip>
- .obj Dalia S M\_M TS (zip) - <https://www.midj.com/images/uploads/resources/3d-midj-dalia-s-m-ts-m-obj.zip>
- .stl Dalia S M\_M TS (zip) - <https://www.midj.com/images/uploads/resources/3d-midj-dalia-s-m-ts-m-stl.zip>
- .3ds Dalia S M\_M TS (zip) - <https://www.midj.com/images/uploads/resources/3d-midj-dalia-s-m-ts-m-3ds.zip>
- .dwg Dalia S M\_M TS (zip) - <https://www.midj.com/images/uploads/resources/3d-midj-dalia-s-m-ts-m-dwg.zip>

## Materials Certifications

### Dark green metal

The technologies used in the previous phase of powder coating play a fundamental role in the final result of the processing. They are in fact essential to increase adherence paint on the metal surface and then guarantee its duration over time. The metal frames, following a total cleaning of the surface, pass through chemical conversion processes, creating a compact base that allows for better adhesion of the subsequent treatment. In the last phase the object subjected to the powder coating process is placed in a polymerization oven, going to form an adherent and extremely tight layer durable. This particular paint job is ideal for outdoor use.

To clean the surface, use a damp microfiber cloth with neutral soap or specific metal cleaning products. Avoid hitting or rubbing the surface with sharp objects. Do not use scourers or other abrasive materials, since they would inevitably scratch the surface. Do not leave rusty iron objects on the surface for too long.

These surface treatments are not suitable for outdoor use, but they guarantee excellent resistance to



# Dalia S M\_Q TS Chair

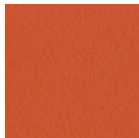
design Beatriz Sempere, 2017

Dalia chair with four leg base in lacquered metal.

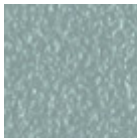
Shell upholstered in leather, faux leather or fabric.

## Colors and Materials

### Structure



Papaya orange steel



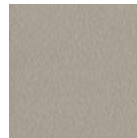
Light blue metal



White steel



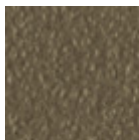
Bronze metal



Ash grey metal



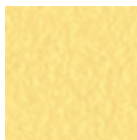
Sand steel



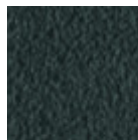
Fango steel



Golden yellow metal



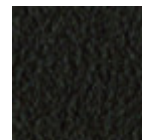
Pastel yellow steel



Grafite metal



Light grey steel



Brown steel



Black steel



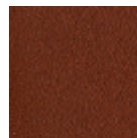
Ocher steel



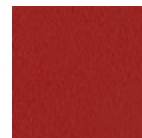
Facepowder pink  
metal



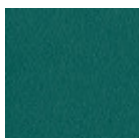
Red steel



Bulgaro red metal



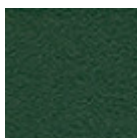
Cherry red metal



Pine green steel

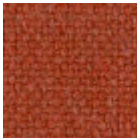


Sage green metal



Dark green metal

### Coating



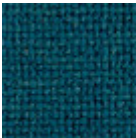
Cotton Club fabric  
14 Colors



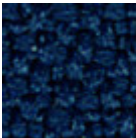
Fenix Wool fabric  
16 Colors



Main Line Flax fabric  
16 Colors



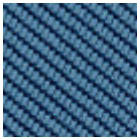
Manhattan fabric  
13 Colors



Mirage fabric  
15 Colors



Novabuk fabric  
17 Colors



Tessuto Oceanic  
13 Colors



Remix 3 fabric  
19 Colors



Second fabric  
11 Colors



Velvet Superb  
15 Colors



Uniform Melange  
Fabric  
7 Colors



Visual fabric  
13 Colors



Yoredale fabric  
14 Colors



Vintage leather  
8 Colors



Vintage faux leather  
12 Colors

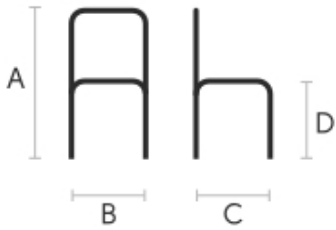


Secret faux leather  
23 Colors



Fiore leather  
21 Colors

## Dimensions



	cm	inch
A	83	32.7
B	54	21.3
C	60	23.6
D	47	18.5

## Volumetric Details

Weight 9.65 Kg  
Volume 0.31 mc  
Package 1

## Downloads

- [.dae Dalia S M\\_Q TS \(zip\)](#) - <https://www.midj.com/images/uploads/resources/3d-midj-dalia-s-m-ts-q-dae.zip>  
[.dxf Dalia S M\\_Q TS \(zip\)](#) - <https://www.midj.com/images/uploads/resources/3d-midj-dalia-s-m-ts-q-dxf.zip>  
[.obj Dalia S M\\_Q TS \(zip\)](#) - <https://www.midj.com/images/uploads/resources/3d-midj-dalia-s-m-ts-q-obj.zip>  
[.stl Dalia S M\\_Q TS \(zip\)](#) - <https://www.midj.com/images/uploads/resources/3d-midj-dalia-s-m-ts-q-stl.zip>  
[.3ds Dalia S M\\_Q TS \(zip\)](#) - <https://www.midj.com/images/uploads/resources/3d-midj-dalia-s-m-ts-q-3ds.zip>

## Materials Certifications

### Dark green metal

The technologies used in the previous phase of powder coating play a fundamental role in the final result of the processing. They are in fact essential to increase adherence paint on the metal surface and then guarantee its duration over time. The metal frames, following a total cleaning of the surface, pass through chemical conversion processes, creating a compact base that allows for better adhesion of the subsequent treatment. In the last phase the object subjected to the powder coating process is placed in a polymerization oven, going to form an adherent and extremely tight layer durable. This particular paint job is ideal for outdoor use.

To clean the surface, use a damp microfiber cloth with neutral soap or specific metal cleaning products. Avoid hitting or rubbing the surface with sharp objects. Do not use scourers or other abrasive materials, since they would inevitably scratch the surface. Do not leave rusty iron objects on the surface for too long.

These surface treatments are not suitable for outdoor use, but they guarantee excellent resistance to frequent use, dirt and dust.