



## Dama H110 Table

Dama desk with legs and structure in lacquere steel. Legs position is flush with top's edge. Rectangular top configurable in melamine, veneered wood, laminate, hpl, fenix or metal.

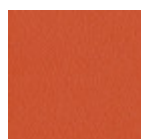
The desk is available in three different sizes and the version with variant h73 cm.

Optional: cable grommet.

The Dama desk is designed to offer maximum functionality in daily working or studying activities. The intersection of the metal sides was divided into two units, well connected to each other, to support tops up to 2 meters long. The Dama desk, available in different heights and sizes, is ideal for setting up a professional studio with a single or multiple workstation, but also a home corner dedicated to home working.

### Colors and Materials

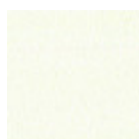
#### Structure



Papaya orange steel



Light blue metal



White steel



Ocean blue steel



Bronze metal



Sand steel



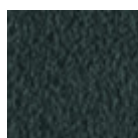
Fango steel



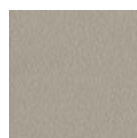
Golden yellow metal



Pastel yellow steel



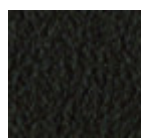
Grafite metal



Ash grey metal



Light grey steel



Brown steel



Black steel



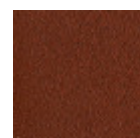
Ocher steel



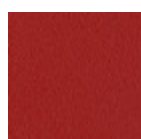
Facepowder pink metal



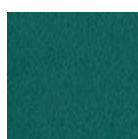
Red steel



Bulgaro red metal



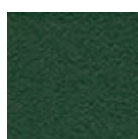
Cherry red metal



Pine green steel



Sage green metal

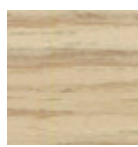


Dark green metal

#### Coating



**Melamine**  
8 Colors



**Veneered ash natural finish**



**Laminate**  
6 Colors



**Fenix laminate**  
2 Colors



**White hpl white core**



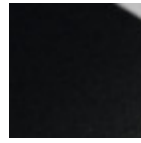
**White hpl black core**



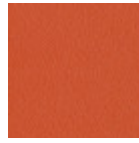
**Hpl cemento**



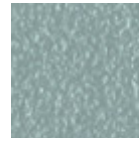
**Hpl corten**



**Black hpl**



**Papaya orange steel**



**Light blue metal**



**White steel**



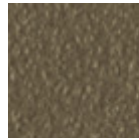
**Ocean blue steel**



**Bronze metal**



**Sand steel**



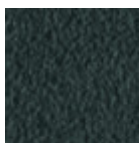
**Fango steel**



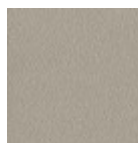
**Golden yellow metal**



**Pastel yellow steel**



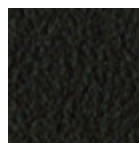
**Grafite metal**



**Ash grey metal**



**Light grey steel**



**Brown steel**



**Black steel**



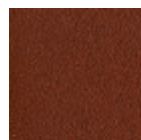
**Ocher steel**



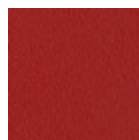
**Facepowder pink metal**



**Red steel**



**Bulgaro red metal**



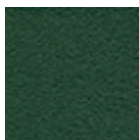
**Cherry red metal**



**Pine green steel**



**Sage green metal**



**Dark green metal**

## Dimensions



	A (cm) (inch)	B (cm) (inch)	C (cm) (inch)
<b>140x80 (cm)</b> (inch)	105 41.3	140 55.1	80 31.5
<b>160x80 (cm)</b> (inch)	105 41.3	160 63	80 31.5
<b>200 (cm)</b> (inch)	105 41.3	160 63	80 31.5



## Dama H73 Bistro Table

Bistrò base with four legs base in lacquered steel and available in two heights (h73 and h110 cm - 28.7 and 40.6 in).

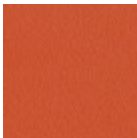
Suitable for square and round tops and for an outdoor use.

Top sizes:  $\varnothing 70$ ,  $\varnothing 80$ , 70x70, 75x75, 80x80 cm -  $\varnothing 27.6$ ,  $\varnothing$ ,  $\varnothing 31.5$ , 27.6x27.6, 29.5x29.5, 31.5x31.5 in).



### Colors and Materials

#### Structure



Papaya orange steel



Light blue metal



White steel



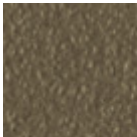
Ocean blue steel



Bronze metal



Sand steel



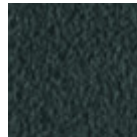
Fango steel



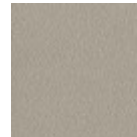
Golden yellow metal



Pastel yellow steel



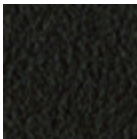
Grafite metal



Ash grey metal



Light grey steel



Brown steel



Black steel



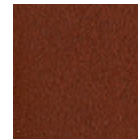
Ocher steel



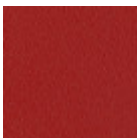
Facepowder pink metal



Red steel



Bulgaro red metal



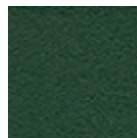
Cherry red metal



Pine green steel

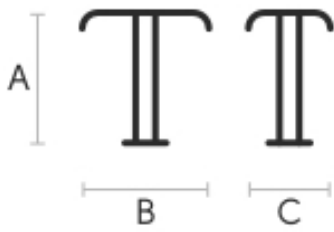


Sage green metal



Dark green metal

### Dimensions



	cm	inch
A	73	28.7
B	68	26.8
C	68	26.8

---

## Materials Certifications

### Dark green metal

The technologies used in the previous phase of powder coating play a fundamental role in the final result of the processing. They are in fact essential to increase adherence paint on the metal surface and then guarantee its duration over time. The metal frames, following a total cleaning of the surface, pass through chemical conversion processes, creating a compact base that allows for better adhesion of the subsequent treatment. In the last phase the object subjected to the powder coating process is placed in a polymerization oven, going to form an adherent and extremely tight layer durable. This particular paint job is ideal for outdoor use.

To clean the surface, use a damp microfiber cloth with neutral soap or specific metal cleaning products. Avoid hitting or rubbing the surface with sharp objects. Do not use scourers or other abrasive materials, since they would inevitably scratch the surface. Do not leave rusty iron objects on the surface for too long.

These surface treatments are not suitable for outdoor use, but they guarantee excellent resistance to frequent use, dirt and dust.



# Dama H73 Table

Dama desk with legs and structure in lacquere steel. Legs position is flush with top's edge. Rectangular top configurable in melamine, veneered wood, laminate, hpl, fenix or metal.

The desk is available in three different sizes and the version with variant h110 cm.

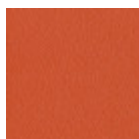
Optional: cable grommet.

The Dama desk is designed to offer maximum functionality in daily working or studying activities. The intersection of the metal sides was divided into two units, well connected to each other, to support tops up to 2 meters long. The Dama desk, available in different heights and sizes, is ideal for setting up a professional studio with a single or multiple workstation, but also a home corner dedicated to home workin



## Colors and Materials

### Structure



Papaya orange steel



Light blue metal



White steel



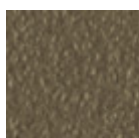
Ocean blue steel



Bronze metal



Sand steel



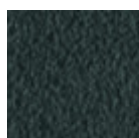
Fango steel



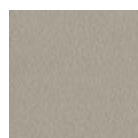
Golden yellow metal



Pastel yellow steel



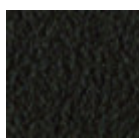
Grafite metal



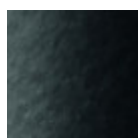
Ash grey metal



Light grey steel



Brown steel



Black steel



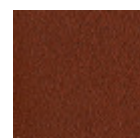
Ocher steel



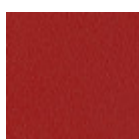
Facepowder pink metal



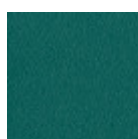
Red steel



Bulgaro red metal



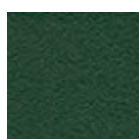
Cherry red metal



Pine green steel

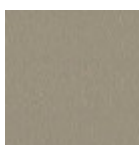


Sage green metal

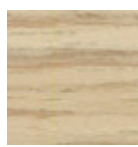


Dark green metal

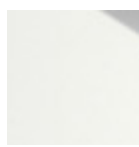
### Coating



**Melamine**  
8 Colors



**Veneered ash natural finish**



**White hpl white core**



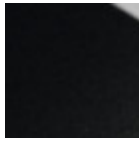
**White hpl black core**



**Hpl cemento**



**Hpl corten**



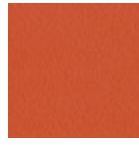
**Black hpl**



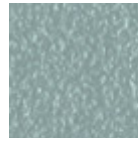
**Fenix laminate**  
2 Colors



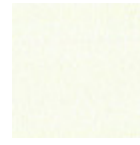
**Laminate**  
6 Colors



**Papaya orange steel**



**Light blue metal**



**White steel**



**Ocean blue steel**



**Bronze metal**



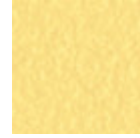
**Sand steel**



**Fango steel**



**Golden yellow metal**



**Pastel yellow steel**



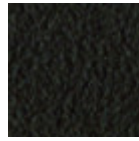
**Grafite metal**



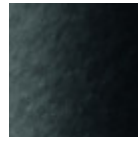
**Ash grey metal**



**Light grey steel**



**Brown steel**



**Black steel**



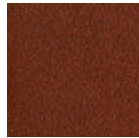
**Ocher steel**



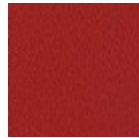
**Facepowder pink metal**



**Red steel**



**Bulgaro red metal**



**Cherry red metal**



**Pine green steel**



**Sage green metal**



**Dark green metal**

## Dimensions



	<b>A (cm)</b> (inch)	<b>B (cm)</b> (inch)	<b>C (cm)</b> (inch)
<b>140x80 (cm)</b> (inch)	75 29.5	140 55.1	80 31.5
<b>160x80 (cm)</b> (inch)	75 29.5	160 63	80 31.5
<b>200x100 (cm)</b> (inch)	75 29.5	200 78.7	100 39.4