



# Danny S L TS Chair

design Midj R&D, 2016

Danny chair with wooden base. Shell upholstered with leather, faux leather or fabric.

Available wooden back shell in the same base finish.

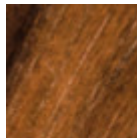
## Colors and Materials

### Structure



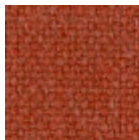
**Stained ash veneered**

10 Colors



**Veneered flamed walnut**

### Coating



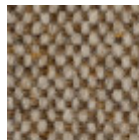
**Cotton Club fabric**

14 Colors



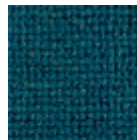
**Fenix Wool fabric**

16 Colors



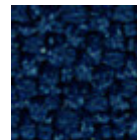
**Main Line Flax fabric**

16 Colors



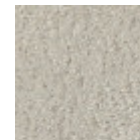
**Manhattan fabric**

13 Colors



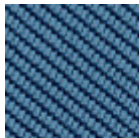
**Mirage fabric**

15 Colors



**Novabuk fabric**

17 Colors



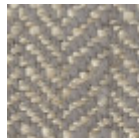
**Tessuto Oceanic**

13 Colors



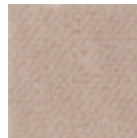
**Remix 3 fabric**

19 Colors



**Second fabric**

11 Colors



**Velvet Superb**

15 Colors



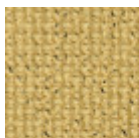
**Uniform Melange Fabric**

7 Colors



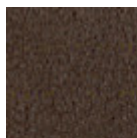
**Visual fabric**

13 Colors



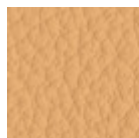
**Yoredale fabric**

14 Colors



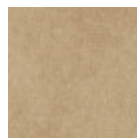
**Vintage leather**

8 Colors



**Fiore leather**

21 Colors



**Vintage faux leather**

12 Colors



**Secret faux leather**

23 Colors

## Dimensions



## Volumetric Details

**Weight** 8.5 Kg  
**Volume** 0.28 mc  
**Package** 1

	cm	inch
A	80	31.5
B	52	20.5
C	58	22.8
D	47	18.5

## Downloads

[.3ds Danny S L TS \(zip\)](https://www.midj.com/images/uploads/resources/3d-midj-danny-s-l-ts-3ds.zip) - <https://www.midj.com/images/uploads/resources/3d-midj-danny-s-l-ts-3ds.zip>

[.dwg Danny S L TS \(zip\)](https://www.midj.com/images/uploads/resources/3d-midj-danny-s-l-ts-dwg.zip) - <https://www.midj.com/images/uploads/resources/3d-midj-danny-s-l-ts-dwg.zip>

## Materials Certifications

### Stained ash veneered

Veneered woods are the result of a process of gluing extremely thin sheets of wood applied to various types of supports to produce furnishing elements, which have a similar appearance to solid wood, but with better performance in terms of resistance to woodworms, lightness and greater stability over time.

If exposed to light, and in any case with the passage of time, the color of the veneer changes. It may happen that furniture of the same color purchased after some time, show color differences. Upon request, the veneered parts can be supplied with certified origin from forests managed in a correct and responsible manner, according to the rigorous environmental standards established by the FSC circuit.

#### CLEANING AND MAINTENANCE

For ordinary cleaning of veneered woods, use a cloth moistened with neutral soap well diluted in water or specific products. Always dry after each application with a dry cloth or paper towel. Do not use abrasive products. In case of accidental spills of substances or liquids, immediately dab the wood with paper towel or with a dry and clean cloth. Avoid proximity to heat sources. Evenly expose the veneered woods to light, for example by periodically opening the table extensions that are stored inside the structure, or by moving any object placed on the surface, such as vases and accessories.

These tips are cleaning recommendations and do not guarantee complete stain removal.

We recommend that you always test the cleaning method on a hidden part of the item to check the resistance of the color.

Colour samples are to be considered approximate for each product. Slight color differences between a lot and the other are to be considered normal.

## Materials Certifications

### Veneered flamed walnut

Veneered woods are the result of a process of gluing extremely thin sheets of wood applied to various types of supports to produce furnishing elements, which have a similar appearance to solid wood, but with better performance in terms of resistance to woodworms, lightness and greater stability over time.

If exposed to light, and in any case with the passage of time, the color of the veneer changes. It may happen that furniture of the same color purchased after some time, show color differences. Upon request, the veneered parts can be supplied with certified origin from forests managed in a correct and responsible manner, according to the rigorous environmental standards established by the FSC circuit.

#### CLEANING AND MAINTENANCE

For ordinary cleaning of veneered woods, use a cloth moistened with neutral soap well diluted in water or specific products. Always dry after each application with a dry cloth or paper towel. Do not use abrasive products. In case of accidental spills of substances or liquids, immediately dab the wood with paper towel or with a dry and clean cloth. Avoid proximity to heat sources. Evenly expose the veneered woods to light,



# Danny P L TS Armchair

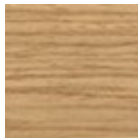
design Midj R&D, 2016

Danny armchair with wooden base. Shell upholstered with leather, faux leather or fabric.

Available wooden back face with the same base finish.

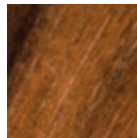
## Colors and Materials

### Structure



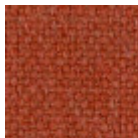
**Stained ash veneered**

10 Colors



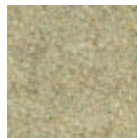
**Veneered flamed walnut**

### Coating



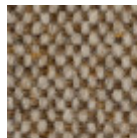
**Cotton Club fabric**

14 Colors



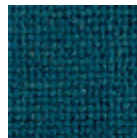
**Fenix Wool fabric**

16 Colors



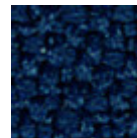
**Main Line Flax fabric**

16 Colors



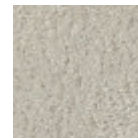
**Manhattan fabric**

13 Colors



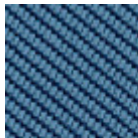
**Mirage fabric**

15 Colors



**Novabuk fabric**

17 Colors



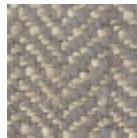
**Tessuto Oceanic**

13 Colors



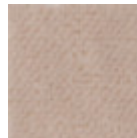
**Remix 3 fabric**

19 Colors



**Second fabric**

11 Colors



**Velvet Superb**

15 Colors



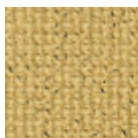
**Uniform Melange Fabric**

7 Colors



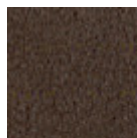
**Visual fabric**

13 Colors



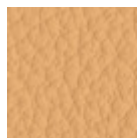
**Yoredale fabric**

14 Colors



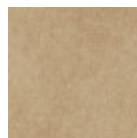
**Vintage leather**

8 Colors



**Fiore leather**

21 Colors



**Vintage faux leather**

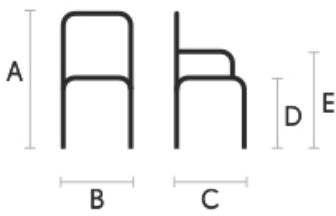
12 Colors



**Secret faux leather**

23 Colors

## Dimensions



## Volumetric Details

**Weight** 12 Kg  
**Volume** 0.32 mc  
**Package** 1

	cm	inch
A	82	32.3
B	58	22.8
C	58	22.8
D	47	18.5

## Downloads

.3ds Danny P L TS (zip) - <https://www.midj.com/images/uploads/resources/3d-midj-danny-p-l-ts-3ds.zip>

## Materials Certifications

### Stained ash veneered

Veneered woods are the result of a process of gluing extremely thin sheets of wood applied to various types of supports to produce furnishing elements, which have a similar appearance to solid wood, but with better performance in terms of resistance to woodworms, lightness and greater stability over time. If exposed to light, and in any case with the passage of time, the color of the veneer changes. It may happen that furniture of the same color purchased after some time, show color differences. Upon request, the veneered parts can be supplied with certified origin from forests managed in a correct and responsible manner, according to the rigorous environmental standards established by the FSC circuit.

#### CLEANING AND MAINTENANCE

For ordinary cleaning of veneered woods, use a cloth moistened with neutral soap well diluted in water or specific products. Always dry after each application with a dry cloth or paper towel. Do not use abrasive products. In case of accidental spills of substances or liquids, immediately dab the wood with paper towel or with a dry and clean cloth. Avoid proximity to heat sources. Evenly expose the veneered woods to light, for example by periodically opening the table extensions that are stored inside the structure, or by moving any object placed on the surface, such as vases and accessories.

These tips are cleaning recommendations and do not guarantee complete stain removal.

We recommend that you always test the cleaning method on a hidden part of the item to check the resistance of the color.

Colour samples are to be considered approximate for each product. Slight color differences between a lot and the other are to be considered normal.

## Materials Certifications

### Veneered flamed walnut

Veneered woods are the result of a process of gluing extremely thin sheets of wood applied to various types of supports to produce furnishing elements, which have a similar appearance to solid wood, but with better performance in terms of resistance to woodworms, lightness and greater stability over time. If exposed to light, and in any case with the passage of time, the color of the veneer changes. It may happen that furniture of the same color purchased after some time, show color differences. Upon request, the veneered parts can be supplied with certified origin from forests managed in a correct and responsible manner, according to the rigorous environmental standards established by the FSC circuit.

#### CLEANING AND MAINTENANCE

For ordinary cleaning of veneered woods, use a cloth moistened with neutral soap well diluted in water or specific products. Always dry after each application with a dry cloth or paper towel. Do not use abrasive products. In case of accidental spills of substances or liquids, immediately dab the wood with paper towel or with a dry and clean cloth. Avoid proximity to heat sources. Evenly expose the veneered woods to light, for example by periodically opening the table extensions that are stored inside the structure, or by moving any object placed on the surface, such as vases and accessories.



# Danny PB L TS Armchair

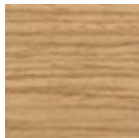
design Midj R&D, 2016

Danny armchair with wooden base and low armrests. Shell upholstered with leather, faux leather or fabric.

Available wooden back face with the same base finish.

## Colors and Materials

### Structure

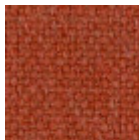


**Stained ash veneered**  
10 Colors



**Veneered flamed walnut**

### Coating



**Cotton Club fabric**  
14 Colors



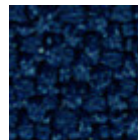
**Fenix Wool fabric**  
16 Colors



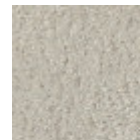
**Main Line Flax fabric**  
16 Colors



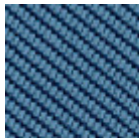
**Manhattan fabric**  
13 Colors



**Mirage fabric**  
15 Colors



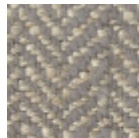
**Novabuk fabric**  
17 Colors



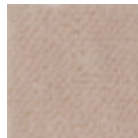
**Tessuto Oceanic**  
13 Colors



**Remix 3 fabric**  
19 Colors



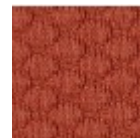
**Second fabric**  
11 Colors



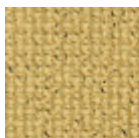
**Velvet Superb**  
15 Colors



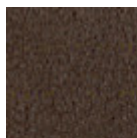
**Uniform Melange Fabric**  
7 Colors



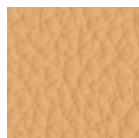
**Visual fabric**  
13 Colors



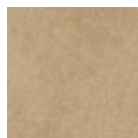
**Yoredale fabric**  
14 Colors



**Vintage leather**  
8 Colors



**Fiore leather**  
21 Colors

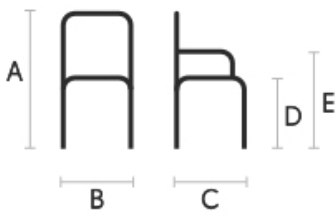


**Vintage faux leather**  
12 Colors



**Secret faux leather**  
23 Colors

## Dimensions



## Volumetric Details

**Weight** 9 Kg

**Volume** 0.32 mc

**Package** 1

	cm	inch
A	80	31.5
B	58	22.8
C	58	22.8
D	47	18.5
E	64	25.2

## Downloads

[.3ds Danny PB L TS \(zip\)](https://www.midj.com/images/uploads/resources/3d-midj-danny-pb-l-ts-3ds.zip) - <https://www.midj.com/images/uploads/resources/3d-midj-danny-pb-l-ts-3ds.zip>

## Materials Certifications

### Stained ash veneered

Veneered woods are the result of a process of gluing extremely thin sheets of wood applied to various types of supports to produce furnishing elements, which have a similar appearance to solid wood, but with better performance in terms of resistance to woodworms, lightness and greater stability over time.

If exposed to light, and in any case with the passage of time, the color of the veneer changes. It may happen that furniture of the same color purchased after some time, show color differences. Upon request, the veneered parts can be supplied with certified origin from forests managed in a correct and responsible manner, according to the rigorous environmental standards established by the FSC circuit.

#### CLEANING AND MAINTENANCE

For ordinary cleaning of veneered woods, use a cloth moistened with neutral soap well diluted in water or specific products. Always dry after each application with a dry cloth or paper towel. Do not use abrasive products. In case of accidental spills of substances or liquids, immediately dab the wood with paper towel or with a dry and clean cloth. Avoid proximity to heat sources. Evenly expose the veneered woods to light, for example by periodically opening the table extensions that are stored inside the structure, or by moving any object placed on the surface, such as vases and accessories.

These tips are cleaning recommendations and do not guarantee complete stain removal.

We recommend that you always test the cleaning method on a hidden part of the item to check the resistance of the color.

Colour samples are to be considered approximate for each product. Slight color differences between a lot and the other are to be considered normal.

## Materials Certifications

### Veneered flamed walnut

Veneered woods are the result of a process of gluing extremely thin sheets of wood applied to various types of supports to produce furnishing elements, which have a similar appearance to solid wood, but with better performance in terms of resistance to woodworms, lightness and greater stability over time.

If exposed to light, and in any case with the passage of time, the color of the veneer changes. It may happen that furniture of the same color purchased after some time, show color differences. Upon request, the veneered parts can be supplied with certified origin from forests managed in a correct and responsible manner, according to the rigorous environmental standards established by the FSC circuit.

#### CLEANING AND MAINTENANCE

For ordinary cleaning of veneered woods, use a cloth moistened with neutral soap well diluted in water or specific products. Always dry after each application with a dry cloth or paper towel. Do not use abrasive products. In case of accidental spills of substances or liquids, immediately dab the wood with paper towel or with a dry and clean cloth. Avoid proximity to heat sources. Evenly expose the veneered woods to light, for example by periodically opening the table extensions that are stored inside the structure, or by moving