



Forest Table

design Beatriz Sempere, 2017

Forest fixed table with base in lacquered metal, available in different sizes. Top in crystalceramic or solid wood.

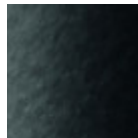
Solid wood top available for the 200x106 (78.7x41.7 in) cm and 250x106 cm (98.4x41.7 in) versions.

Colors and Materials

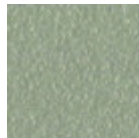
Structure



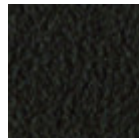
White steel



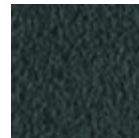
Black steel



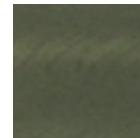
Sand steel



Brown steel

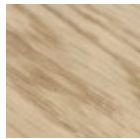


Grafite metal



Industrial steel

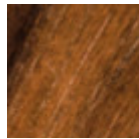
Coating



Solid oak straight edge



Solid walnut bark edge



Veneered flamed walnut



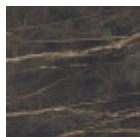
Black lacquered veneered ash



Glossy white calacatta marble crystalceramic



Glossy greek black marble crystalceramic



Noir desir glossy marble crystalceramic

Dimensions



	A (cm) (inch)	B (cm) (inch)	C (cm) (inch)
200x106 rectang (cm) (inch)	77 30.3	200 78.7	106 41.7

	A (cm)	B (cm)	C (cm)
	(inch)	(inch)	(inch)
250x106			
rectang (cm)	77	250	106
(inch)	30.3	98.4	41.7

Volumetric Details

Weight 202 Kg

Volume 1.83 mc

Package 4

Downloads

[.3ds Forest 200x106 \(zip\)](https://www.midj.com/images/uploads/resources/3ds-midj-forest-200x106.zip) - <https://www.midj.com/images/uploads/resources/3ds-midj-forest-200x106.zip>

[.3ds Forest 250x106 \(zip\)](https://www.midj.com/images/uploads/resources/3ds-midj-forest-250x106.zip) - <https://www.midj.com/images/uploads/resources/3ds-midj-forest-250x106.zip>

Materials Certifications

Solid oak straight edge

FEATURES AND PLUS

Solid wood tops are obtained from the trunk of the tree, in particular from the heartwood, or the inner part (the less young one). Each top has unique characteristics in terms of veins and knots due to the natural origin of the material. To reach the widths necessary for the realization of a top for domestic use, several floorboards/strips are joined together in an effort to maintain the greater possible uniformity.

MAINTENANCE

For the regular cleaning schedule of Solid woods tops, use a wet sponge with mild soap diluted in water or specific products. Dry after each application with a cloth or absorbent paper. Do not use abrasive products. In case of accidental release of liquid substances, dab immediately the surface with absorbent paper or a dry, clean cloth. Avoid proximity to heat sources. Expose the solid wood surfaces to light, for example by opening periodically the extensions of the tables that are placed inside the structures, or by moving any objects such as vases and accessories generally resting on the top.

Materials Certifications

Veneered flamed walnut

Veneered woods are the result of a process of gluing extremely thin sheets of wood applied to various types of supports to produce furnishing elements, which have a similar appearance to solid wood, but with better performance in terms of resistance to woodworms, lightness and greater stability over time. If exposed to light, and in any case with the passage of time, the color of the veneer changes. It may happen that furniture of the same color purchased after some time, show color differences. Upon request, the veneered parts can be supplied with certified origin from forests managed in a correct and responsible manner, according to the rigorous environmental standards established by the FSC circuit.

CLEANING AND MAINTENANCE

For ordinary cleaning of veneered woods, use a cloth moistened with neutral soap well diluted in water or specific products. Always dry after each application with a dry cloth or paper towel. Do not use abrasive products. In case of accidental spills of substances or liquids, immediately dab the wood with paper towel or with a dry and clean cloth. Avoid proximity to heat sources. Evenly expose the veneered woods to light, for example by periodically opening the table extensions that are stored inside the structure, or by moving any object placed on the surface, such as vases and accessories.

These tips are cleaning recommendations and do not guarantee complete stain removal.

We recommend that you always test the cleaning method on a hidden part of the item to check the resistance of the color.

Colour samples are to be considered approximate for each product. Slight color differences between a lot and the other are to be considered normal.

Materials Certifications

Black lacquered veneered ash

Veneered woods are the result of a process of gluing extremely thin sheets of wood applied to various types of supports to produce furnishing elements, which have a similar appearance to solid wood, but with



Forest Extendable Table

design Beatriz Sempere, 2017

Extendable Forest table with lacquered metal base. Glass or ceramic top.

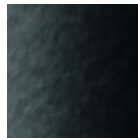


Colors and Materials

Structure



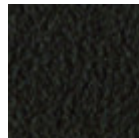
Metallo bianco



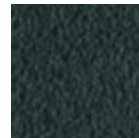
Metallo nero



Sand steel

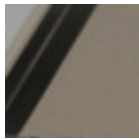


Brown steel

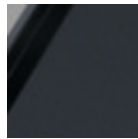


Grafite metal

Coating



Matt sand antiscratch glass



Matt graphite antiscratch glass



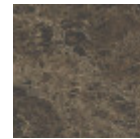
Lead crystalceramic



Charcoal savoia crystalceramic



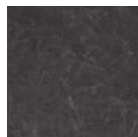
Cement savoia crystalceramic



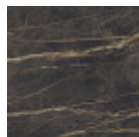
Matt emperador marble crystalceramic



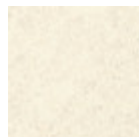
Glossy white calacatta marble crystalceramic



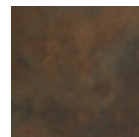
Glossy greek black marble crystalceramic



Noir desir glossy marble crystalceramic

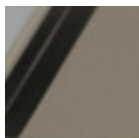


Oxide white crystalceramic

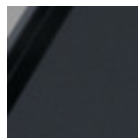


Corten crystalceramic

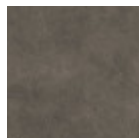
Extensions



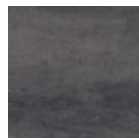
Matt sand antiscratch glass



Matt graphite antiscratch glass



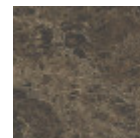
Lead crystalceramic



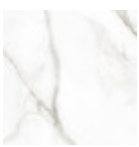
Charcoal savoia crystalceramic



Cement savoia crystalceramic



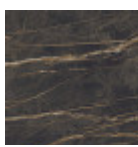
Matt emperador marble crystalceramic



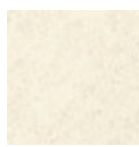
Glossy white calacatta marble crystalceramic



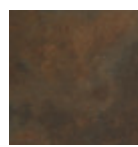
Glossy greek black marble crystalceramic



Noir desir glossy marble crystalceramic

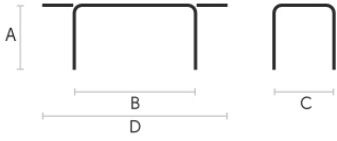


Oxide white crystalceramic



Corten crystalceramic

Dimensions



	cm	inch
A	75	29.5
B	200	78.7
C	100	39.4
D	300	118.1

Volumetric Details

Weight 200 Kg
Volume 1.63 mc
Package 4

Materials Certifications

Matt sand antiscratch glass

Tempered glass tops are elegant and shiny. The interaction with the surrounding light enhances their brilliance and increases their timeless charm.

Tempered glass is glass that has been subjected to a special treatment that involves gradual heating, followed by sudden air cooling. This procedure allows the transformation into a more resistant and safer glass, as, in case of breakage, it will shatter into small harmless fragments. Tops in tempered glass may have slight scratches due to sliding on the oven rollers. In addition, any dots and rings on the surface, visible in light or backlight conditions, prove that the tempera process has been carried out.

CLEANING AND MAINTENANCE

Glass tops do not require any particular maintenance, and cleaning is simple and effective. In general, for daily cleaning, use a specific microfiber cloth moistened with hot water or detergents formulated for glass surfaces. For stubborn stains, use non-abrasive cleaning products or detergents. To remove any dried residues deposited on the surface, proceed with the use of a wooden or plastic scraper. Do not use rough or abrasive sponges. For all tops we recommend avoiding direct contact with sharp or pointed tools, as well as avoid placing very cold or very hot containers directly on the glass tops.

These tips are cleaning recommendations and do not guarantee complete stain removal.

We recommend that you always test the cleaning method on a hidden part of the item to check the resistance of the material.

Colour samples are to be considered approximate for each product. Slight color differences between a lot and the other are to be considered normal.

Materials Certifications

Matt graphite antiscratch glass

Tempered glass tops are elegant and shiny. The interaction with the surrounding light enhances their brilliance and increases their timeless charm.

Tempered glass is glass that has been subjected to a special treatment that involves gradual heating, followed by sudden air cooling. This procedure allows the transformation into a more resistant and safer glass, as, in case of breakage, it will shatter into small harmless fragments. Tops in tempered glass may have slight scratches due to sliding on the oven rollers. In addition, any dots and rings on the surface, visible in light or backlight conditions, prove that the tempera process has been carried out.

CLEANING AND MAINTENANCE

Glass tops do not require any particular maintenance, and cleaning is simple and effective. In general, for daily cleaning, use a specific microfiber cloth moistened with hot water or detergents formulated for glass surfaces. For stubborn stains, use non-abrasive cleaning products or detergents. To remove any dried