



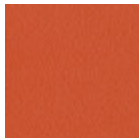
Guapa P M CU Armchair

design Sempere#Poli Design, 2014

Armchair with sled base. Structure available in lacquered, chrome, pink gold or black nickel steel. Seat and backrest are in hide.

Colors and Materials

Structure



Papaya orange steel



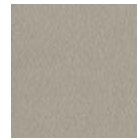
Light blue metal



White steel



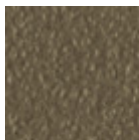
Bronze metal



Ash grey metal



Sand steel



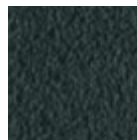
Fango steel



Golden yellow metal



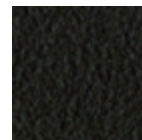
Pastel yellow steel



Grafite metal



Light grey steel



Brown steel



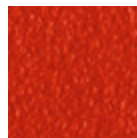
Black steel



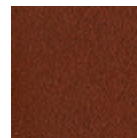
Ocher steel



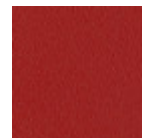
Facepowder pink metal



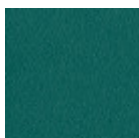
Red steel



Bulgaro red metal



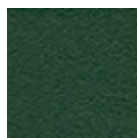
Cherry red metal



Pine green steel



Sage green metal



Dark green metal



Chrome



Golden champagne



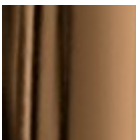
Pink Gold



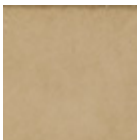
Black Nickel



Matt black nickel

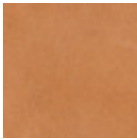


Golden bronze



Matt golden bronze

Coating



Tuscan hide
6 Colors



TK Hide
13 Colors

Dimensions



	cm	inch
A	82	32.3
B	67	26.4
C	55	21.6
D	46	18.1
E	62	24.4

Volumetric Details

Weight 11.5 Kg
Volume 0.37 mc
Package 1

Certifications



Downloads

- .dae Guapa P M CU (zip) - <https://www.midj.com/images/uploads/resources/3d-midj-guapa-p-m-cu-dae.zip>
- .dxf Guapa P M CU (zip) - <https://www.midj.com/images/uploads/resources/3d-midj-guapa-p-m-cu-dxf.zip>
- .obj Guapa P M CU (zip) - <https://www.midj.com/images/uploads/resources/3d-midj-guapa-p-m-cu-obj.zip>
- .stl Guapa P M CU (zip) - <https://www.midj.com/images/uploads/resources/3d-midj-guapa-p-m-cu-stl.zip>
- .3ds Guapa P M CU (zip) - <https://www.midj.com/images/uploads/resources/3d-midj-guapa-p-m-cu-3ds.zip>

Materials Certifications

Dark green metal

The technologies used in the previous phase of powder coating play a fundamental role in the final result of the processing. They are in fact essential to increase adherence paint on the metal surface and then guarantee its duration over time. The metal frames, following a total cleaning of the surface, pass through chemical conversion processes, creating a compact base that allows for better adhesion of the subsequent treatment. In the last phase the object subjected to the powder coating process is placed in a polymerization oven, going to form an adherent and extremely tight layer durable. This particular paint job is ideal for outdoor use.

To clean the surface, use a damp microfiber cloth with neutral soap or specific metal cleaning products. Avoid hitting or rubbing the surface with sharp objects. Do not use scourers or other abrasive materials, since they would inevitably scratch the surface. Do not leave rusty iron objects on the surface for too long.

These surface treatments are not suitable for outdoor use, but they guarantee excellent resistance to frequent use, dirt and dust.

Materials Certifications

Matt black nickel

Galvanic treatments consist in applying a thin layer of a metal or other alloy, in order that properties of the



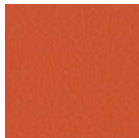
Guapa P MX CU Armchair

design Sempere#Poli Design, 2014

Guapa swivel armchair with four ways trestle base in lacquered steel.
Shell in hide.

Colors and Materials

Structure



Papaya orange steel



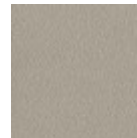
Light blue metal



White steel



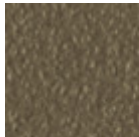
Bronze metal



Ash grey metal



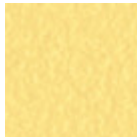
Sand steel



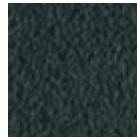
Fango steel



Golden yellow metal



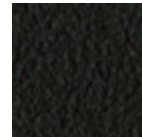
Pastel yellow steel



Grafite metal



Light grey steel



Brown steel



Black steel



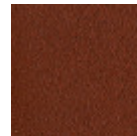
Ocher steel



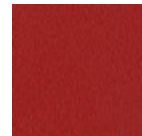
Facepowder pink
metal



Red steel



Bulgaro red metal



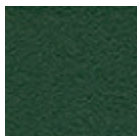
Cherry red metal



Pine green steel

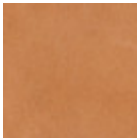


Sage green metal



Dark green metal

Coating



Tuscan hide
6 Colors



TK Hide
13 Colors

Dimensions



	cm	inch
A	83	32.7
B	67	26.4
C	55	21.7
D	47	18.5
E	62	24.4

Volumetric Details

Weight 12 Kg
Volume 0.22 mc
Package 1

Downloads

.3ds Guapa P MX CU (zip) - <https://www.midj.com/images/uploads/resources/3d-midj-guapa-p-mx-cu-3ds.zip>

Materials Certifications

Dark green metal

The technologies used in the previous phase of powder coating play a fundamental role in the final result of the processing. They are in fact essential to increase adherence paint on the metal surface and then guarantee its duration over time. The metal frames, following a total cleaning of the surface, pass through chemical conversion processes, creating a compact base that allows for better adhesion of the subsequent treatment. In the last phase the object subjected to the powder coating process is placed in a polymerization oven, going to form an adherent and extremely tight layer durable. This particular paint job is ideal for outdoor use.

To clean the surface, use a damp microfiber cloth with neutral soap or specific metal cleaning products. Avoid hitting or rubbing the surface with sharp objects. Do not use scourers or other abrasive materials, since they would inevitably scratch the surface. Do not leave rusty iron objects on the surface for too long.

These surface treatments are not suitable for outdoor use, but they guarantee excellent resistance to frequent use, dirt and dust.

Materials Certifications

Tuscan hide

TYPE: NABUK TUSCAN HIDE
Nabuk Tuscan hide is obtained by working on the external part of the animal's skin, the fiore part. The surface is polished by using specific machinery, with the aim of obtaining a soft and velvety surface. Nabuk is a very fine hide, as only the best leathers are suitable for this type of processing, but at the same time it must be carefully maintained. Small imperfections on the surface guarantee its originality and naturalness, and are not to be considered manufacturing defects. This material is not water repellent and fears humidity. To maintain the beauty of the original color, avoid putting the Nabuk Tuscan hide into contact with water or any other liquid. Absorption of liquid can lead to an alteration of the finish.

TYPE: FIORE TUSCAN HIDE
Fiore Tuscan hide is a high-quality natural material, and softness is its main feature. Hide is not afraid to show the signs of time, that contribute to make it a unique product. Possible imperfections such as



Guapa S M CU Chair

design Sempere#Poli Design, 2014

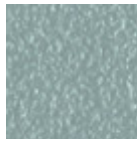
Chair with sled base and structure available in chrome, pink gold, black nickel or lacquered steel. Seat and backrest are in hide.

Colors and Materials

Structure



Papaya orange steel



Light blue metal



White steel



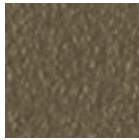
Bronze metal



Ash grey metal



Sand steel



Fango steel



Golden yellow metal



Pastel yellow steel



Grafite metal



Light grey steel



Brown steel



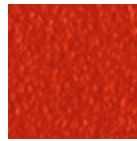
Black steel



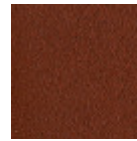
Ocher steel



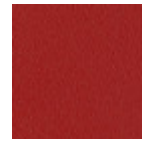
Facepowder pink metal



Red steel



Bulgaro red metal



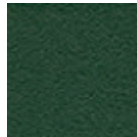
Cherry red metal



Pine green steel



Sage green metal



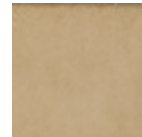
Dark green metal



Chrome



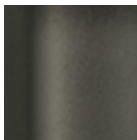
Golden bronze



Matt golden bronze



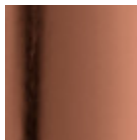
Black Nickel



Matt black nickel

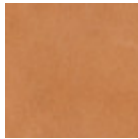


Golden champagne



Pink Gold

Coating

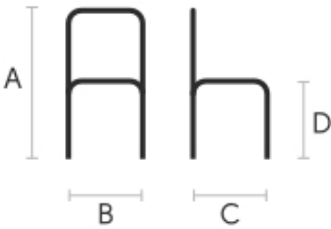


Tuscan hide
6 Colors



TK Hide
13 Colors

Dimensions



	cm	inch
A	78	30.7
B	50	19.7
C	52	20.5
D	46	18.1

Volumetric Details

Weight 10 Kg
Volume 0.25 mc
Package 1

Certifications



Downloads

- .dae Guapa S M CU (zip) - <https://www.midj.com/images/uploads/resources/3d-midj-guapa-s-m-cu-dae.zip>
- .dxf Guapa S M CU (zip) - <https://www.midj.com/images/uploads/resources/3d-midj-guapa-s-m-cu-dxf.zip>
- .obj Guapa S M CU (zip) - <https://www.midj.com/images/uploads/resources/3d-midj-guapa-s-m-cu-obj.zip>
- .stl Guapa S M CU (zip) - <https://www.midj.com/images/uploads/resources/3d-midj-guapa-s-m-cu-stl.zip>
- .3ds Guapa S M CU (zip) - <https://www.midj.com/images/uploads/resources/3d-midj-guapa-s-m-cu-3ds.zip>

Materials Certifications

Dark green metal

The technologies used in the previous phase of powder coating play a fundamental role in the final result of the processing. They are in fact essential to increase adherence paint on the metal surface and then guarantee its duration over time. The metal frames, following a total cleaning of the surface, pass through chemical conversion processes, creating a compact base that allows for better adhesion of the subsequent treatment. In the last phase the object subjected to the powder coating process is placed in a polymerization oven, going to form an adherent and extremely tight layer durable. This particular paint job is ideal for outdoor use.

To clean the surface, use a damp microfiber cloth with neutral soap or specific metal cleaning products. Avoid hitting or rubbing the surface with sharp objects. Do not use scourers or other abrasive materials, since they would inevitably scratch the surface. Do not leave rusty iron objects on the surface for too long.

These surface treatments are not suitable for outdoor use, but they guarantee excellent resistance to frequent use, dirt and dust.

Materials Certifications

Matt golden bronze

Galvanic treatments consist in applying a thin layer of a metal or other alloy, in order that properties of the



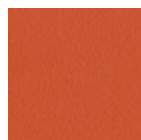
Guapa AP M CU Lounge Armchair

design Sempere#Poli Design, 2014

Lounge armchair with sled base. Structure available in lacquered steel or in chrome. Seat and backrest are in hide.

Colors and Materials

Structure



Papaya orange steel



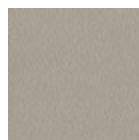
Light blue metal



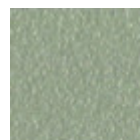
White steel



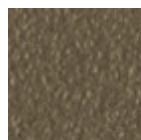
Bronze metal



Ash grey metal



Sand steel



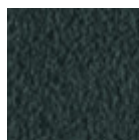
Fango steel



Golden yellow metal



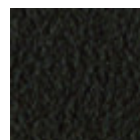
Pastel yellow steel



Grafite metal



Light grey steel



Brown steel



Black steel



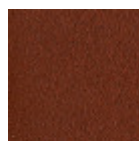
Ocher steel



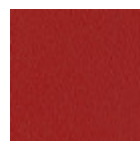
Facepowder pink metal



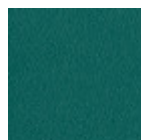
Red steel



Bulgaro red metal



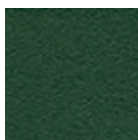
Cherry red metal



Pine green steel



Sage green metal

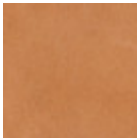


Dark green metal



Chrome

Coating



Tuscan hide
6 Colors



TK Hide
13 Colors

Dimensions



	cm	inch
A	82	32.3
B	81	31.9
C	62	24.4
D	41	16.1
E	56	22

Volumetric Details

Weight 13.5 Kg
Volume 0.46 mc
Package 1

Downloads

.3ds Guapa AP M CU (zip) - <https://www.midj.com/images/uploads/resources/3d-midj-guapa-ap-m-cu-3ds.zip>
.stl Guapa AP M CU (zip) - <https://www.midj.com/images/uploads/resources/3d-midj-guapa-ap-m-cu-stl.zip>

Materials Certifications

Dark green metal

The technologies used in the previous phase of powder coating play a fundamental role in the final result of the processing. They are in fact essential to increase adherence paint on the metal surface and then guarantee its duration over time. The metal frames, following a total cleaning of the surface, pass through chemical conversion processes, creating a compact base that allows for better adhesion of the subsequent treatment. In the last phase the object subjected to the powder coating process is placed in a polymerization oven, going to form an adherent and extremely tight layer durable. This particular paint job is ideal for outdoor use.

To clean the surface, use a damp microfiber cloth with neutral soap or specific metal cleaning products. Avoid hitting or rubbing the surface with sharp objects. Do not use scourers or other abrasive materials, since they would inevitably scratch the surface. Do not leave rusty iron objects on the surface for too long.

These surface treatments are not suitable for outdoor use, but they guarantee excellent resistance to frequent use, dirt and dust.

Materials Certifications

Tuscan hide

TYPE: NABUK TUSCAN HIDE
Nabuk Tuscan hide is obtained by working on the external part of the animal's skin, the fiore part. The surface is polished by using specific machinery, with the aim of obtaining a soft and velvety surface. Nabuk is a very fine hide, as only the best leathers are suitable for this type of processing, but at the same time it must be carefully maintained. Small imperfections on the surface guarantee its originality and naturalness, and are not to be considered manufacturing defects. This material is not water repellent and fears humidity. To maintain the beauty of the original color, avoid putting the Nabuk Tuscan hide into contact with water or any other liquid. Absorption of liquid can lead to an alteration of the finish.

TYPE: FIORE TUSCAN HIDE
Fiore Tuscan hide is a high-quality natural material, and softness is its main feature. Hide is not afraid to



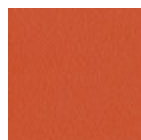
Guapa DNA M CU Armchair

design Sempere#Poli Design, 2014

Guapa rocking chair with high backrest and structure available in lacquered steel or chrome. Shell in hide characterized by a mesh effect.

Colors and Materials

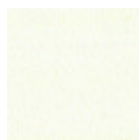
Structure



Papaya orange steel



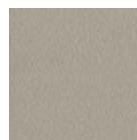
Light blue metal



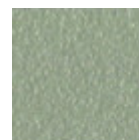
White steel



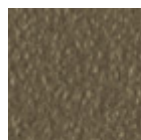
Bronze metal



Ash grey metal



Sand steel



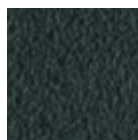
Fango steel



Golden yellow metal



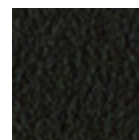
Pastel yellow steel



Grafite metal



Light grey steel



Brown steel



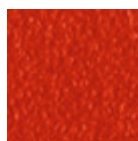
Black steel



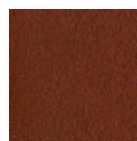
Ocher steel



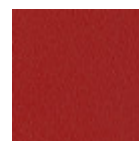
Facepowder pink
metal



Red steel



Bulgaro red metal



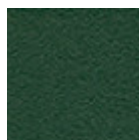
Cherry red metal



Pine green steel



Sage green metal

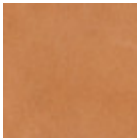


Dark green metal



Chrome

Coating



Tuscan hide

6 Colors



TK Hide

13 Colors

Dimensions



	cm	inch
A	97	38.2
B	69	27.2
C	86	33.9
D	44	17.3
E	62	24.4

Volumetric Details

Weight 15 Kg
Volume 0.65 mc
Package 1

Downloads

.3ds Guapa DNA M CU (zip) - <https://www.midj.com/images/uploads/resources/3d-midj-guapa-dna-m-cu-3ds.zip>

Materials Certifications

Dark green metal

The technologies used in the previous phase of powder coating play a fundamental role in the final result of the processing. They are in fact essential to increase adherence paint on the metal surface and then guarantee its duration over time. The metal frames, following a total cleaning of the surface, pass through chemical conversion processes, creating a compact base that allows for better adhesion of the subsequent treatment. In the last phase the object subjected to the powder coating process is placed in a polymerization oven, going to form an adherent and extremely tight layer durable. This particular paint job is ideal for outdoor use.

To clean the surface, use a damp microfiber cloth with neutral soap or specific metal cleaning products. Avoid hitting or rubbing the surface with sharp objects. Do not use scourers or other abrasive materials, since they would inevitably scratch the surface. Do not leave rusty iron objects on the surface for too long.

These surface treatments are not suitable for outdoor use, but they guarantee excellent resistance to frequent use, dirt and dust.

Materials Certifications

Tuscan hide

TYPE: NABUK TUSCAN HIDE

Nabuk Tuscan hide is obtained by working on the external part of the animal's skin, the fiore part. The surface is polished by using specific machinery, with the aim of obtaining a soft and velvety surface. Nabuk is a very fine hide, as only the best leathers are suitable for this type of processing, but at the same time it must be carefully maintained. Small imperfections on the surface guarantee its originality and naturalness, and are not to be considered manufacturing defects. This material is not water repellent and fears humidity. To maintain the beauty of the original color, avoid putting the Nabuk Tuscan hide into contact with water or any other liquid. Absorption of liquid can lead to an alteration of the finish.

TYPE: FIORE TUSCAN HIDE

Fiore Tuscan hide is a high-quality natural material, and softness is its main feature. Hide is not afraid to show the signs of time, that contribute to make it a unique product. Possible imperfections such as

MIDJ®



Guapa DNB M CU

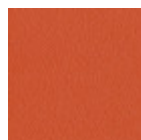
Lounge Armchair

design Sempere#Poli Design, 2014

Rocking chair with low backrest, structure in lacquered steel or chrome.
Shell in hide characterized by a mesh effect.

Colors and Materials

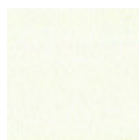
Structure



Papaya orange steel



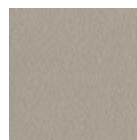
Light blue metal



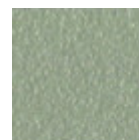
White steel



Bronze metal



Ash grey metal



Sand steel



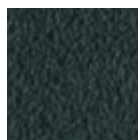
Fango steel



Golden yellow metal



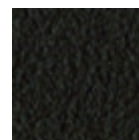
Pastel yellow steel



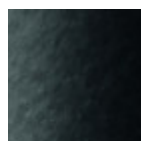
Grafite metal



Light grey steel



Brown steel



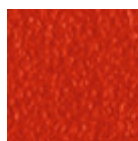
Black steel



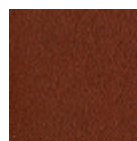
Ocher steel



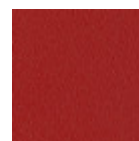
Facepowder pink
metal



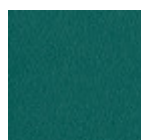
Red steel



Bulgaro red metal



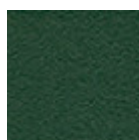
Cherry red metal



Pine green steel



Sage green metal

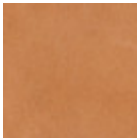


Dark green metal



Chrome

Coating



Tuscan hide
6 Colors



TK Hide
13 Colors

Dimensions



	cm	inch
A	81	31.9
B	67	26.4
C	75	29.5
D	46	18.1
E	62	24.4

Volumetric Details

Weight 13.5 Kg
Volume 0.49 mc
Package 1

Downloads

.3ds Guapa DNB M CU (zip) - <https://www.midj.com/images/uploads/resources/3d-midj-guapa-dnb-m-cu-3ds.zip>

Materials Certifications

Dark green metal

The technologies used in the previous phase of powder coating play a fundamental role in the final result of the processing. They are in fact essential to increase adherence paint on the metal surface and then guarantee its duration over time. The metal frames, following a total cleaning of the surface, pass through chemical conversion processes, creating a compact base that allows for better adhesion of the subsequent treatment. In the last phase the object subjected to the powder coating process is placed in a polymerization oven, going to form an adherent and extremely tight layer durable. This particular paint job is ideal for outdoor use.

To clean the surface, use a damp microfiber cloth with neutral soap or specific metal cleaning products. Avoid hitting or rubbing the surface with sharp objects. Do not use scourers or other abrasive materials, since they would inevitably scratch the surface. Do not leave rusty iron objects on the surface for too long.

These surface treatments are not suitable for outdoor use, but they guarantee excellent resistance to frequent use, dirt and dust.

Materials Certifications

Tuscan hide

TYPE: NABUK TUSCAN HIDE
Nabuk Tuscan hide is obtained by working on the external part of the animal's skin, the fiore part. The surface is polished by using specific machinery, with the aim of obtaining a soft and velvety surface. Nabuk is a very fine hide, as only the best leathers are suitable for this type of processing, but at the same time it must be carefully maintained. Small imperfections on the surface guarantee its originality and naturalness, and are not to be considered manufacturing defects. This material is not water repellent and fears humidity. To maintain the beauty of the original color, avoid putting the Nabuk Tuscan hide into contact with water or any other liquid. Absorption of liquid can lead to an alteration of the finish.

TYPE: FIORE TUSCAN HIDE
Fiore Tuscan hide is a high-quality natural material, and softness is its main feature. Hide is not afraid to show the signs of time, that contribute to make it a unique product. Possible imperfections such as



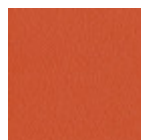
Guapa DPA M CU Armchair

design Sempere#Poli Design, 2014

Guapa DPA swivel and high adjustable armchair with five-ways base in lacquered steel. Tilt mechanism integrated. It comes with white wheels combined with a white base or with chrome wheels with black edge combined with the black base. Seat and backrest are in hide.

Colors and Materials

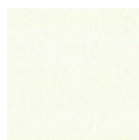
Structure



Papaya orange steel



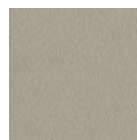
Light blue metal



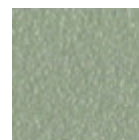
White steel



Bronze metal



Ash grey metal



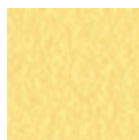
Sand steel



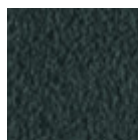
Fango steel



Golden yellow metal



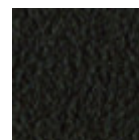
Pastel yellow steel



Grafite metal



Light grey steel



Brown steel



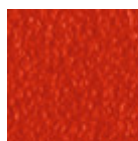
Black steel



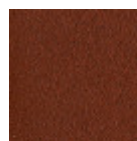
Ocher steel



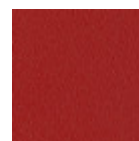
Facepowder pink
metal



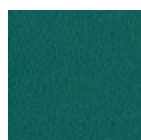
Red steel



Bulgaro red metal



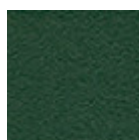
Cherry red metal



Pine green steel

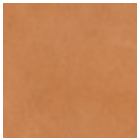


Sage green metal



Dark green metal

Coating



Tuscan hide

6 Colors



TK Hide

13 Colors

Dimensions



	cm	inch
A	104/113	40.9/44.5
B	69	22.4
C	70	24.4
D	46/55	18.1/21.7
E	63/72	24.8/28.3

Volumetric Details

Weight 17 Kg
Volume 0.44 mc
Package 1

Downloads

.3ds Guapa DPA M CU (zip) - <https://www.midj.com/images/uploads/resources/3d-midj-guapa-dpa-cu-3ds.zip>

Materials Certifications

Dark green metal

The technologies used in the previous phase of powder coating play a fundamental role in the final result of the processing. They are in fact essential to increase adherence paint on the metal surface and then guarantee its duration over time. The metal frames, following a total cleaning of the surface, pass through chemical conversion processes, creating a compact base that allows for better adhesion of the subsequent treatment. In the last phase the object subjected to the powder coating process is placed in a polymerization oven, going to form an adherent and extremely tight layer durable. This particular paint job is ideal for outdoor use.

To clean the surface, use a damp microfiber cloth with neutral soap or specific metal cleaning products. Avoid hitting or rubbing the surface with sharp objects. Do not use scourers or other abrasive materials, since they would inevitably scratch the surface. Do not leave rusty iron objects on the surface for too long.

These surface treatments are not suitable for outdoor use, but they guarantee excellent resistance to frequent use, dirt and dust.

Materials Certifications

Tuscan hide

TYPE: NABUK TUSCAN HIDE
Nabuk Tuscan hide is obtained by working on the external part of the animal's skin, the fiore part. The surface is polished by using specific machinery, with the aim of obtaining a soft and velvety surface. Nabuk is a very fine hide, as only the best leathers are suitable for this type of processing, but at the same time it must be carefully maintained. Small imperfections on the surface guarantee its originality and naturalness, and are not to be considered manufacturing defects. This material is not water repellent and fears humidity. To maintain the beauty of the original color, avoid putting the Nabuk Tuscan hide into contact with water or any other liquid. Absorption of liquid can lead to an alteration of the finish.

TYPE: FIORE TUSCAN HIDE
Fiore Tuscan hide is a high-quality natural material, and softness is its main feature. Hide is not afraid to show the signs of time, that contribute to make it a unique product. Possible imperfections such as



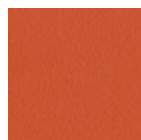
Guapa DPB M CU Armchair

design Sempere#Poli Design, 2014

Guapa DPB swivel and high adjustable armchair with low backrest with five-ways base in lacquered steel. Tilt mechanism integrated. It comes with white wheels combined with a white base or with chrome wheels with black edge combined with the black base. Seat and backrest are in hide.

Colors and Materials

Structure



Papaya orange steel



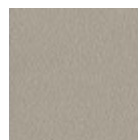
Light blue metal



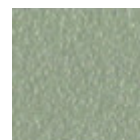
White steel



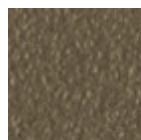
Bronze metal



Ash grey metal



Sand steel



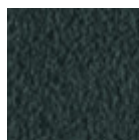
Fango steel



Golden yellow metal



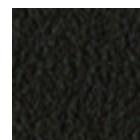
Pastel yellow steel



Grafite metal



Light grey steel



Brown steel



Black steel



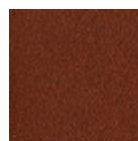
Ocher steel



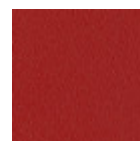
Facepowder pink
metal



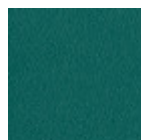
Red steel



Bulgaro red metal



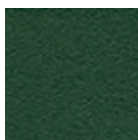
Cherry red metal



Pine green steel

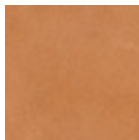


Sage green metal



Dark green metal

Coating

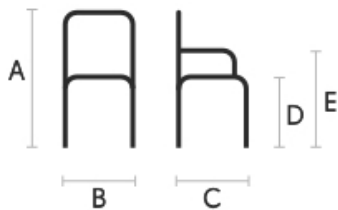


Tuscan hide
6 Colors



TK Hide
13 Colors

Dimensions



	cm	inch
A	68/82	26.8/32.3
B	67	26.4
C	53	20.9
D	43/57	16.9/22.5
E	62/73	24.4/28.7

Volumetric Details

Weight 13 Kg
Volume 0.34 mc
Package 1

Downloads

.3ds Guapa DPB M CU (zip) - <https://www.midj.com/images/uploads/resources/3d-midj-guapa-dpb-cu-3ds.zip>

Materials Certifications

Dark green metal

The technologies used in the previous phase of powder coating play a fundamental role in the final result of the processing. They are in fact essential to increase adherence paint on the metal surface and then guarantee its duration over time. The metal frames, following a total cleaning of the surface, pass through chemical conversion processes, creating a compact base that allows for better adhesion of the subsequent treatment. In the last phase the object subjected to the powder coating process is placed in a polymerization oven, going to form an adherent and extremely tight layer durable. This particular paint job is ideal for outdoor use.

To clean the surface, use a damp microfiber cloth with neutral soap or specific metal cleaning products. Avoid hitting or rubbing the surface with sharp objects. Do not use scourers or other abrasive materials, since they would inevitably scratch the surface. Do not leave rusty iron objects on the surface for too long.

These surface treatments are not suitable for outdoor use, but they guarantee excellent resistance to frequent use, dirt and dust.

Materials Certifications

Tuscan hide

TYPE: NABUK TUSCAN HIDE

Nabuk Tuscan hide is obtained by working on the external part of the animal's skin, the fiore part. The surface is polished by using specific machinery, with the aim of obtaining a soft and velvety surface. Nabuk is a very fine hide, as only the best leathers are suitable for this type of processing, but at the same time it must be carefully maintained. Small imperfections on the surface guarantee its originality and naturalness, and are not to be considered manufacturing defects. This material is not water repellent and fears humidity. To maintain the beauty of the original color, avoid putting the Nabuk Tuscan hide into contact with water or any other liquid. Absorption of liquid can lead to an alteration of the finish.

TYPE: FIORE TUSCAN HIDE

Fiore Tuscan hide is a high-quality natural material, and softness is its main feature. Hide is not afraid to show the signs of time, that contribute to make it a unique product. Possible imperfections such as