



Joe H65 / H75 M CU Stool

design Midj R&D, 2015

Stool with four legs base in lacquered steel. Seat and backrest upholstered hide.

Colors and Materials

Structure



Papaya orange steel



Light blue metal



White steel



Bronze metal



Ash grey metal



Sand steel



Fango steel



Golden yellow metal



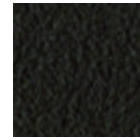
Pastel yellow steel



Grafite metal



Light grey steel



Brown steel



Black steel



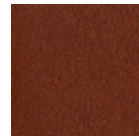
Ocher steel



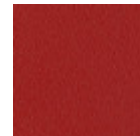
Facepowder pink metal



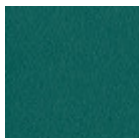
Red steel



Bulgaro red metal



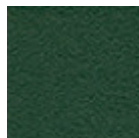
Cherry red metal



Pine green steel



Sage green metal

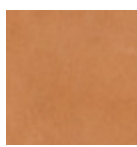


Dark green metal

Coating

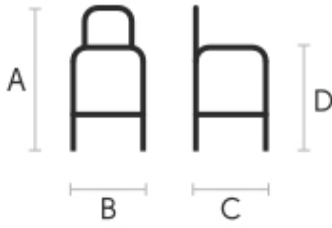


Hide
18 Colors



Tuscan hide
6 Colors

Dimensions



	A	B	C	
	(cm)	(cm)	(cm)	
	(inch)	(inch)	(inch)	

	A	B	C	
H65 (cm)	98	44	52	66
(inch)	38.6	17.3	20.5	26
H75 (cm)	108	44	52	76
(inch)	42.5	17.3	20.5	29.9

Volumetric Details

Weight 7.5 Kg
Volume 0.33 mc
Package 1

Downloads

- [.3ds Joe H65 M CU \(zip\)](https://www.midj.com/images/uploads/resources/3d-midj-joe-h65-m-cu-3ds.zip) - <https://www.midj.com/images/uploads/resources/3d-midj-joe-h65-m-cu-3ds.zip>
- [.dae Joe H65 M CU \(zip\)](https://www.midj.com/images/uploads/resources/3d-midj-joe-h65-m-cu-dae.zip) - <https://www.midj.com/images/uploads/resources/3d-midj-joe-h65-m-cu-dae.zip>
- [.dxf Joe H65 M CU \(zip\)](https://www.midj.com/images/uploads/resources/3d-midj-joe-h65-m-cu-dxf.zip) - <https://www.midj.com/images/uploads/resources/3d-midj-joe-h65-m-cu-dxf.zip>
- [.obj Joe H65 M CU \(zip\)](https://www.midj.com/images/uploads/resources/3d-midj-joe-h65-m-cu-obj.zip) - <https://www.midj.com/images/uploads/resources/3d-midj-joe-h65-m-cu-obj.zip>
- [.stl Joe H65 M CU \(zip\)](https://www.midj.com/images/uploads/resources/3d-midj-joe-h65-m-cu-stl.zip) - <https://www.midj.com/images/uploads/resources/3d-midj-joe-h65-m-cu-stl.zip>

Materials Certifications

Dark green metal

The technologies used in the previous phase of powder coating play a fundamental role in the final result of the processing. They are in fact essential to increase adherence paint on the metal surface and then guarantee its duration over time. The metal frames, following a total cleaning of the surface, pass through chemical conversion processes, creating a compact base that allows for better adhesion of the subsequent treatment. In the last phase the object subjected to the powder coating process is placed in a polymerization oven, going to form an adherent and extremely tight layer durable. This particular paint job is ideal for outdoor use.

To clean the surface, use a damp microfiber cloth with neutral soap or specific metal cleaning products. Avoid hitting or rubbing the surface with sharp objects. Do not use scourers or other abrasive materials, since they would inevitably scratch the surface. Do not leave rusty iron objects on the surface for too long.

These surface treatments are not suitable for outdoor use, but they guarantee excellent resistance to frequent use, dirt and dust.

Materials Certifications

Hide

FIRE RESISTANCE:
CLASSE 1IM
BS 5852 1-2

Hide is hygienic and practical, wear resistant and breathable. It is obtained from skin of cattle raised for food purposes, and subsequently treated with chromium salts. Any imperfections on the hide surface are



Joe H65 / H75 M LG Stool

design Midj R&D, 2015

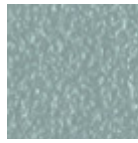
Stool with four legs base in lacquered steel. Wooden seat and backrest.

Colors and Materials

Structure



Papaya orange steel



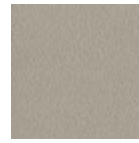
Light blue metal



White steel



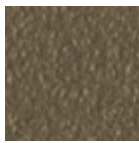
Bronze metal



Ash grey metal



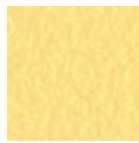
Sand steel



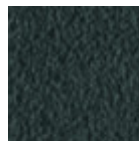
Fango steel



Golden yellow metal



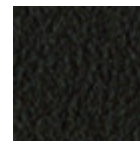
Pastel yellow steel



Grafite metal



Light grey steel



Brown steel



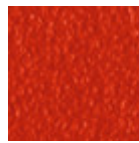
Black steel



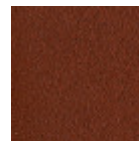
Ocher steel



Facepowder pink metal



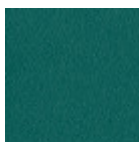
Red steel



Bulgaro red metal



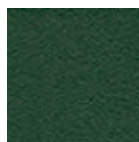
Cherry red metal



Pine green steel

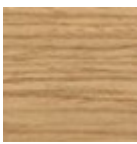


Sage green metal



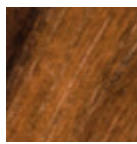
Dark green metal

Coating



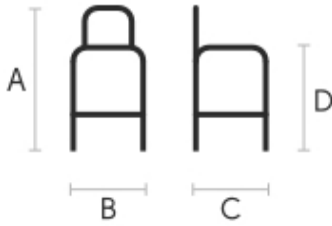
Stained ash veneered

10 Colors



Veneered flamed walnut

Dimensions



	A (cm) (inch)	B (cm) (inch)	C (cm) (inch)	
H65 (cm) (inch)	98 38.6	44 17.3	52 20.5	66 26
H75 (cm) (inch)	108 42.5	44 17.3	52 20.5	76 29.9

Volumetric Details

Weight 7.5 Kg
Volume 0.30 mc
Package 1

Downloads

- [.3ds Joe H65 M LG \(zip\)](https://www.midj.com/images/uploads/resources/3d-midj-joe-h65-m-lg-3ds.zip) - <https://www.midj.com/images/uploads/resources/3d-midj-joe-h65-m-lg-3ds.zip>
- [.dae Joe H65 M LG \(zip\)](https://www.midj.com/images/uploads/resources/3d-midj-joe-h65-m-lg-dae.zip) - <https://www.midj.com/images/uploads/resources/3d-midj-joe-h65-m-lg-dae.zip>
- [.dxf Joe H65 M LG \(zip\)](https://www.midj.com/images/uploads/resources/3d-midj-joe-h65-m-lg-dxf.zip) - <https://www.midj.com/images/uploads/resources/3d-midj-joe-h65-m-lg-dxf.zip>
- [.obj Joe H65 M LG \(zip\)](https://www.midj.com/images/uploads/resources/3d-midj-joe-h65-m-lg-obj.zip) - <https://www.midj.com/images/uploads/resources/3d-midj-joe-h65-m-lg-obj.zip>
- [.stl Joe H65 M LG \(zip\)](https://www.midj.com/images/uploads/resources/3d-midj-joe-h65-m-lg-stl.zip) - <https://www.midj.com/images/uploads/resources/3d-midj-joe-h65-m-lg-stl.zip>
- [.3ds Joe H75 M LG \(zip\)](https://www.midj.com/images/uploads/resources/3d-midj-joe-h75-m-lg-3ds.zip) - <https://www.midj.com/images/uploads/resources/3d-midj-joe-h75-m-lg-3ds.zip>
- [.dae Joe H75 M LG \(zip\)](https://www.midj.com/images/uploads/resources/3d-midj-joe-h75-m-lg-dae.zip) - <https://www.midj.com/images/uploads/resources/3d-midj-joe-h75-m-lg-dae.zip>
- [.dxf Joe H75 M LG \(zip\)](https://www.midj.com/images/uploads/resources/3d-midj-joe-h75-m-lg-dxf.zip) - <https://www.midj.com/images/uploads/resources/3d-midj-joe-h75-m-lg-dxf.zip>
- [.obj Joe H75 M LG \(zip\)](https://www.midj.com/images/uploads/resources/3d-midj-joe-h75-m-lg-obj.zip) - <https://www.midj.com/images/uploads/resources/3d-midj-joe-h75-m-lg-obj.zip>
- [.stl Joe H75 M LG \(zip\)](https://www.midj.com/images/uploads/resources/3d-midj-joe-h75-m-lg-stl.zip) - <https://www.midj.com/images/uploads/resources/3d-midj-joe-h75-m-lg-stl.zip>

Materials Certifications

Dark green metal

The technologies used in the previous phase of powder coating play a fundamental role in the final result of the processing. They are in fact essential to increase adherence paint on the metal surface and then guarantee its duration over time. The metal frames, following a total cleaning of the surface, pass through chemical conversion processes, creating a compact base that allows for better adhesion of the subsequent treatment. In the last phase the object subjected to the powder coating process is placed in a polymerization oven, going to form an adherent and extremely tight layer durable. This particular paint job is ideal for outdoor use.

To clean the surface, use a damp microfiber cloth with neutral soap or specific metal cleaning products. Avoid hitting or rubbing the surface with sharp objects. Do not use scourers or other abrasive materials, since they would inevitably scratch the surface. Do not leave rusty iron objects on the surface for too long.

These surface treatments are not suitable for outdoor use, but they guarantee excellent resistance to frequent use, dirt and dust.

Materials Certifications



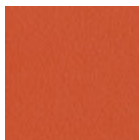
Joe H65 / H75 M TS Stool

design Midj R&D, 2015

Stool with four-legs base in painted steel. Seat and backrest in leather, faux leather or fabric. Optional: wooden backrest's back face.

Colors and Materials

Structure



Papaya orange steel



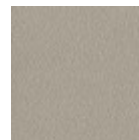
Light blue metal



White steel



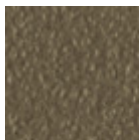
Bronze metal



Ash grey metal



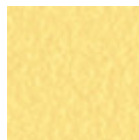
Sand steel



Fango steel



Golden yellow metal



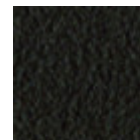
Pastel yellow steel



Grafite metal



Light grey steel



Brown steel



Black steel



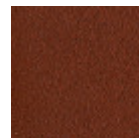
Ocher steel



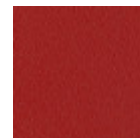
Facepowder pink metal



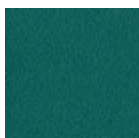
Red steel



Bulgaro red metal



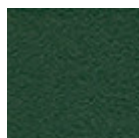
Cherry red metal



Pine green steel

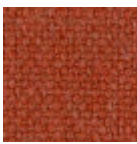


Sage green metal

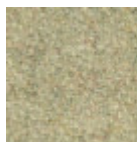


Dark green metal

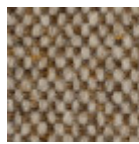
Coating



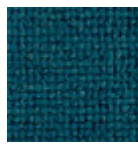
Cotton Club fabric
14 Colors



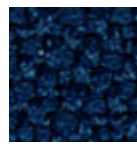
Fenix Wool fabric
16 Colors



Main Line Flax fabric
16 Colors



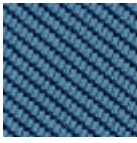
Manhattan fabric
13 Colors



Mirage fabric
15 Colors



Novabuk fabric
17 Colors



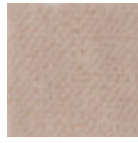
Tessuto Oceanic
13 Colors



Remix 3 fabric
19 Colors



Second fabric
11 Colors



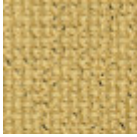
Velvet Superb
15 Colors



Uniform Melange Fabric
7 Colors



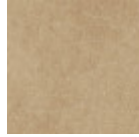
Visual fabric
13 Colors



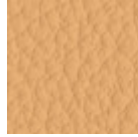
Yoredale fabric
14 Colors



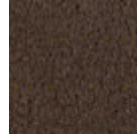
Secret faux leather
23 Colors



Vintage faux leather
12 Colors



Fiore leather
21 Colors

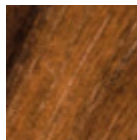


Vintage leather
8 Colors

Extensions

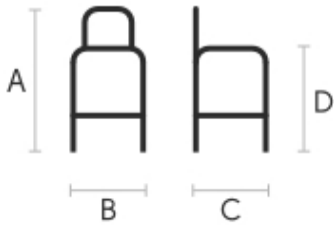


Stained ash veneered
10 Colors



Veneered flamed walnut

Dimensions



	A (cm) (inch)	B (cm) (inch)	C (cm) (inch)	D (cm) (inch)
H65 (cm) (inch)	98 38.6	44 17.3	52 20.5	66 26
H75 (cm) (inch)	108 42.5	44 17.3	52 20.5	76 29.9

Volumetric Details

Weight 7.5 Kg
Volume 0.33 mc
Package 1

Downloads