



Joe S M TS Chair

design Midj R&D, 2015

Chair with four legs frame in lacquered steel. Seat and backrest upholstered in leather, faux leather, fabric or custom's fabric.



Colors and Materials

Structure



Papaya orange steel



Light blue metal



White steel



Bronze metal



Ash grey metal



Sand steel



Fango steel



Golden yellow metal



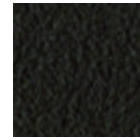
Pastel yellow steel



Grafite metal



Light grey steel



Brown steel



Black steel



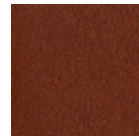
Ocher steel



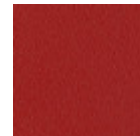
Facepowder pink metal



Red steel



Bulgaro red metal



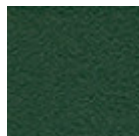
Cherry red metal



Pine green steel



Sage green metal



Dark green metal

Coating

**Cotton Club fabric**

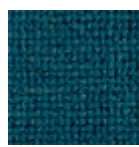
14 Colors

**Fenix Wool fabric**

16 Colors

**Main Line Flax fabric**

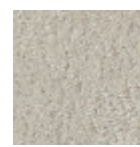
16 Colors

**Manhattan fabric**

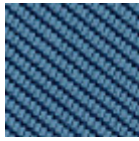
13 Colors

**Mirage fabric**

15 Colors

**Novabuk fabric**

17 Colors

**Tessuto Oceanic**

13 Colors

**Remix 3 fabric**

19 Colors

**Second fabric**

11 Colors

**Velvet Superb**

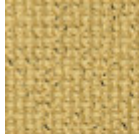
15 Colors

**Uniform Melange Fabric**

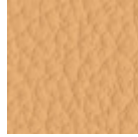
7 Colors

**Visual fabric**

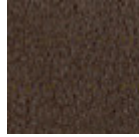
13 Colors

**Yoredale fabric**

14 Colors

**Fiore leather**

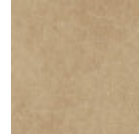
21 Colors

**Vintage leather**

8 Colors

**Secret faux leather**

23 Colors

**Vintage faux leather**

12 Colors

Dimensions



	cm	inch
A	80	31.5
B	45	17.7
C	52	20.5
D	46	18.1

Volumetric Details

Weight 6 Kg**Volume** 0.32 mc**Package** 1

Downloads

[.3ds Joe S M TS \(zip\)](https://www.midj.com/images/uploads/resources/3d-midj-joe-s-m-ts-3ds.zip) - <https://www.midj.com/images/uploads/resources/3d-midj-joe-s-m-ts-3ds.zip>[.dae Joe S M TS \(zip\)](https://www.midj.com/images/uploads/resources/3d-midj-joe-s-m-ts-tsl-dae.zip) - <https://www.midj.com/images/uploads/resources/3d-midj-joe-s-m-ts-tsl-dae.zip>[.dxf Joe S M TS \(zip\)](https://www.midj.com/images/uploads/resources/3d-midj-joe-s-m-ts-tsl-dxf.zip) - <https://www.midj.com/images/uploads/resources/3d-midj-joe-s-m-ts-tsl-dxf.zip>[.obj Joe S M TS \(zip\)](https://www.midj.com/images/uploads/resources/3d-midj-joe-s-m-cu-obj.zip) - <https://www.midj.com/images/uploads/resources/3d-midj-joe-s-m-cu-obj.zip>[.stl Joe S M TS \(zip\)](https://www.midj.com/images/uploads/resources/3d-midj-joe-s-m-cu-stl.zip) - <https://www.midj.com/images/uploads/resources/3d-midj-joe-s-m-cu-stl.zip>

Materials Certifications

Dark green metal

The technologies used in the previous phase of powder coating play a fundamental role in the final result of the processing. They are in fact essential to increase adherence paint on the metal surface and then guarantee its duration over time. The metal frames, following a total cleaning of the surface, pass through chemical conversion processes, creating a compact base that allows for better adhesion of the subsequent treatment. In the last phase the object subjected to the powder coating process is placed in a polymerization oven, going to form an adherent and extremely tight layer durable. This particular paint job is ideal for outdoor use.

To clean the surface, use a damp microfiber cloth with neutral soap or specific metal cleaning products. Avoid hitting or rubbing the surface with sharp objects. Do not use scourers or other abrasive materials, since they would inevitably scratch the surface. Do not leave rusty iron objects on the surface for too long.

These surface treatments are not suitable for outdoor use, but they guarantee excellent resistance to frequent use, dirt and dust.



Joe S M TS/L Chair

design Midj R&D, 2015

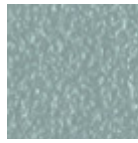
Chair with four legs frame in lacquered steel. Seat and backrest upholstered in leather, faux leather, fabric or custom's fabric. Version with backrest's front face upholstered and wooden back.

Colors and Materials

Structure



Papaya orange steel



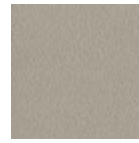
Light blue metal



White steel



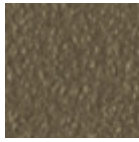
Bronze metal



Ash grey metal



Sand steel



Fango steel



Golden yellow metal



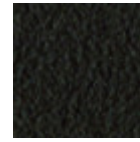
Pastel yellow steel



Grafite metal



Light grey steel



Brown steel



Black steel



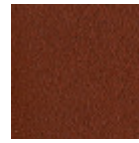
Ocher steel



Facepowder pink metal



Red steel



Bulgaro red metal



Cherry red metal



Pine green steel

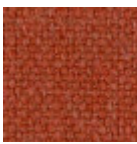


Sage green metal

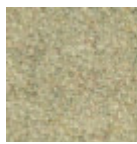


Dark green metal

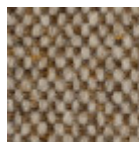
Coating

**Cotton Club fabric**

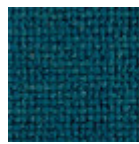
14 Colors

**Fenix Wool fabric**

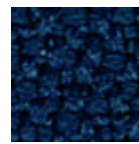
16 Colors

**Main Line Flax fabric**

16 Colors

**Manhattan fabric**

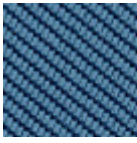
13 Colors

**Mirage fabric**

15 Colors

**Novabuk fabric**

17 Colors

**Tessuto Oceanic**

13 Colors

**Remix 3 fabric**

19 Colors

**Second fabric**

11 Colors

**Velvet Superb**

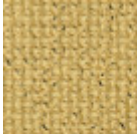
15 Colors

**Uniform Melange Fabric**

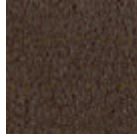
7 Colors

**Visual fabric**

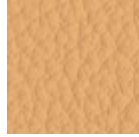
13 Colors

**Yoredale fabric**

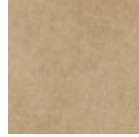
14 Colors

**Vintage leather**

8 Colors

**Fiore leather**

21 Colors

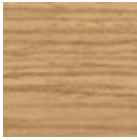
**Vintage faux leather**

12 Colors

**Secret faux leather**

23 Colors

Extensions

**Stained ash veneered**

10 Colors

**Veneered flamed walnut**

Dimensions



	cm	inch
A	80	31.5
B	45	17.7
C	52	20.5
D	46	18.1

Volumetric Details

Weight 6 Kg**Volume** 0.32 mc**Package** 1

Downloads

[.3ds Joe S M TS/L \(zip\)](https://www.midj.com/images/uploads/resources/3d-midj-joe-s-m-ts-l-3ds.zip) - <https://www.midj.com/images/uploads/resources/3d-midj-joe-s-m-ts-l-3ds.zip>[.dae Joe S M TS/L \(zip\)](https://www.midj.com/images/uploads/resources/3d-midj-joe-s-m-ts-l-dae.zip) - <https://www.midj.com/images/uploads/resources/3d-midj-joe-s-m-ts-l-dae.zip>[.dxf Joe S M TS/L \(zip\)](https://www.midj.com/images/uploads/resources/3d-midj-joe-s-m-ts-l-dxf.zip) - <https://www.midj.com/images/uploads/resources/3d-midj-joe-s-m-ts-l-dxf.zip>[.obj Joe S M TS/L \(zip\)](https://www.midj.com/images/uploads/resources/3d-midj-joe-s-m-ts-l-obj.zip) - <https://www.midj.com/images/uploads/resources/3d-midj-joe-s-m-ts-l-obj.zip>[.stl Joe S M TS/L \(zip\)](https://www.midj.com/images/uploads/resources/3d-midj-joe-s-m-ts-l-stl.zip) - <https://www.midj.com/images/uploads/resources/3d-midj-joe-s-m-ts-l-stl.zip>

Materials Certifications

Dark green metal

The technologies used in the previous phase of powder coating play a fundamental role in the final result of the processing. They are in fact essential to increase adhesion paint on the metal surface and then guarantee its duration over time. The metal frames, following a total cleaning of the surface, pass through chemical conversion processes, creating a compact base that allows for better adhesion of the



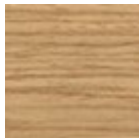
Joe S L TS/L Chair

design Midj R&D, 2015

Chair with four leg frame available in different finishes. Seat and backrest upholstered with leather, ecoleather, fabric or custom's fabric. This version is available with backrest's front face upholstered and backrest in wooden finish.

Colors and Materials

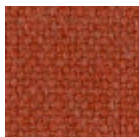
Structure



Lacquered ash

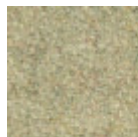
11 Colors

Coating



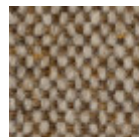
Cotton Club fabric

14 Colors



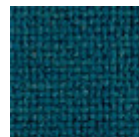
Fenix Wool fabric

16 Colors



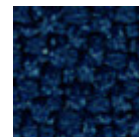
Main Line Flax fabric

16 Colors



Manhattan fabric

13 Colors



Mirage fabric

15 Colors



Novabuk fabric

17 Colors



Tessuto Oceanic

13 Colors



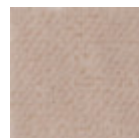
Remix 3 fabric

19 Colors



Second fabric

11 Colors



Velvet Superb

15 Colors



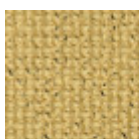
Uniform Melange Fabric

7 Colors



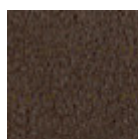
Visual fabric

13 Colors



Yoredale fabric

14 Colors



Vintage leather

8 Colors



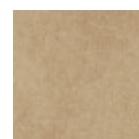
Fiore leather

21 Colors



Secret faux leather

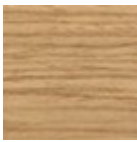
23 Colors



Vintage faux leather

12 Colors

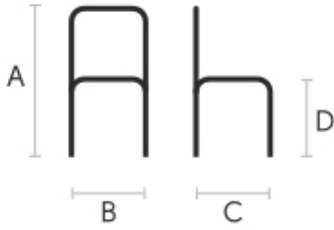
Extensions



Stained ash veneered

10 Colors

Dimensions



	cm	inch
A	80	31.5
B	45	17.7
C	52	20.5
D	46	18.1

Volumetric Details

Weight 6 Kg

Volume 0.32 mc

Package 1

Downloads

[.3ds Joe S L TS/L \(zip\)](https://www.midj.com/images/uploads/resources/3d-midj-joe-s-m-ts-l-3ds.zip) - <https://www.midj.com/images/uploads/resources/3d-midj-joe-s-m-ts-l-3ds.zip>

[.dae Joe S L TS/L \(zip\)](https://www.midj.com/images/uploads/resources/3d-midj-joe-s-m-ts-l-dae.zip) - <https://www.midj.com/images/uploads/resources/3d-midj-joe-s-m-ts-l-dae.zip>

[.dxf Joe S L TS/L \(zip\)](https://www.midj.com/images/uploads/resources/3d-midj-joe-s-m-ts-l-dxf.zip) - <https://www.midj.com/images/uploads/resources/3d-midj-joe-s-m-ts-l-dxf.zip>

[.obj Joe S L TS/L \(zip\)](https://www.midj.com/images/uploads/resources/3d-midj-joe-s-m-ts-l-obj.zip) - <https://www.midj.com/images/uploads/resources/3d-midj-joe-s-m-ts-l-obj.zip>

[.stl Joe S L TS/L \(zip\)](https://www.midj.com/images/uploads/resources/3d-midj-joe-s-m-ts-l-stl.zip) - <https://www.midj.com/images/uploads/resources/3d-midj-joe-s-m-ts-l-stl.zip>

Materials Certifications

Lacquered ash

Ash wood is durable material, with good resistance and flexibility. Thanks to its porosity, it is ideal to be lacquered. Its original color is quite light: it can range from light blond, to pink and pale brown, with possible shades of green. In our set of samples, it is available in the natural finish and in numerous color variations: from the classic wood effects to the most pop colors of the moment. The ash used for our materials is European.

CLEANING AND MAINTENANCE

Ash is an easy-to-clean wood: to remove dust or light stains, rub the surface with a soft cloth, if necessary moistened in a solution of hot water or white vinegar, to help eliminate stains without altering the beauty and shine of the wood. Always dry the surface. In addition, you can choose to use specific products for wooden furniture.

These tips are cleaning recommendations and do not guarantee complete stain removal. We recommend that you always test the cleaning method on a hidden part of the item to check the resistance of the color.

Colour samples are to be considered approximate for each product. Slight color differences between a lot and the other are to be considered normal.

Materials Certifications

Cotton Club fabric

COMPOSITION: 70 % COT; 10% PES; 10% ACR; 10% AF

Abrasion resistance (Martindale) 100.000 cycles

Cotton Club by Flukso is a fabric made from latest generation regenerated cotton yarns. To create this fabric, specific fixing techniques were used, that give it and help maintaining a natural, slightly wavy and

MIDJ

Joe S L CU Chair

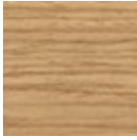
design Midj R&D, 2015

Chair with wooden four leg frame, available in different finishes. Seat and backrest upholstered with hide or regenerated hide.



Colors and Materials

Structure



Lacquered ash

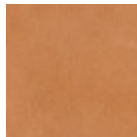
11 Colors

Coating



Hide

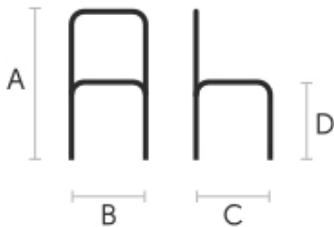
18 Colors



Tuscan hide

6 Colors

Dimensions



	cm	inch
A	80	31.5
B	45	17.7
C	52	20.5
D	46	18.1

Volumetric Details

Weight 12 Kg

Volume 0.32 mc

Package 1

Downloads

[.3ds Joe S L CU \(zip\)](https://www.midj.com/images/uploads/resources/3d-midj-joe-s-l-cu-3ds.zip) - <https://www.midj.com/images/uploads/resources/3d-midj-joe-s-l-cu-3ds.zip>

[.dae Joe S L CU \(zip\)](https://www.midj.com/images/uploads/resources/3d-midj-joe-s-l-cu-dae.zip) - <https://www.midj.com/images/uploads/resources/3d-midj-joe-s-l-cu-dae.zip>

[.dxf Joe S L CU \(zip\)](https://www.midj.com/images/uploads/resources/3d-midj-joe-s-l-cu-dxf.zip) - <https://www.midj.com/images/uploads/resources/3d-midj-joe-s-l-cu-dxf.zip>

[.obj Joe S L CU \(zip\)](https://www.midj.com/images/uploads/resources/3d-midj-joe-s-l-cu-obj.zip) - <https://www.midj.com/images/uploads/resources/3d-midj-joe-s-l-cu-obj.zip>

[.stl Joe S L CU \(zip\)](https://www.midj.com/images/uploads/resources/3d-midj-joe-s-l-cu-stl.zip) - <https://www.midj.com/images/uploads/resources/3d-midj-joe-s-l-cu-stl.zip>

Materials Certifications

Lacquered ash

Ash wood is durable material, with good resistance and flexibility. Thanks to its porosity, it is ideal to be lacquered. Its original color is quite light: it can range from light blond, to pink and pale brown, with possible shades of green. In our set of samples, it is available in the natural finish and in numerous color variations: from the classic wood effects to the most pop colors of the moment. The ash used for our materials is European.

CLEANING AND MAINTENANCE

Ash is an easy-to-clean wood: to remove dust or light stains, rub the surface with a soft cloth, if necessary moistened in a solution of hot water or white vinegar, to help eliminate stains without altering the beauty and shine of the wood. Always dry the surface. In addition, you can choose to use specific products for wooden furniture.

These tips are cleaning recommendations and do not guarantee complete stain removal. We recommend that you always test the cleaning method on a hidden part of the item to check the resistance of the color.

Colour samples are to be considered approximate for each product. Slight color differences between a lot and the other are to be considered normal.

Materials Certifications

Hide

FIRE RESISTANCE:

CLASSE 1IM

BS 5852 1-2

Hide is hygienic and practical, wear resistant and breathable. It is obtained from skin of cattle raised for food purposes, and subsequently treated with chromium salts. Any imperfections on the hide surface are a natural feature that guarantee its originality.

CLEANING AND MAINTENANCE

Dust the surface regularly, with a dry and soft cloth. In case of stains, use only a non-abrasive damp cloth, and gently rub the area by moving the cloth in a circular direction starting from the edges of the stain towards the center. We recommend to act promptly: a delay could compromise the cleaning result. Do not use products that contain solvents or alcohol since they can damage the surface. Dry immediately after treatment. For a good conservation of the product, avoid direct sunlight, that can alter its characteristics and color, as well as exposure to heat sources.

We recommend that you always test the cleaning method on a hidden part of the item to check the resistance of the color. These tips are cleaning recommendations and do not guarantee complete stain removal.

Colour samples are to be considered approximate for each product. Slight color differences between a lot and the other are to be considered normal.

Materials Certifications

Tuscan hide

TYPE: NABUK TUSCAN HIDE

Nabuk Tuscan hide is obtained by working on the external part of the animal's skin, the fiore part. The



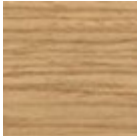
Joe S L LG Chair

design Midj R&D, 2015

Chair with four leg base, seat and backrest are availables in lacquered ash in different finishes.

Colors and Materials

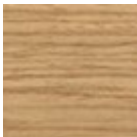
Structure



Lacquered ash

11 Colors

Coating



Lacquered ash

11 Colors

Dimensions



	cm	inch
A	80	31.5
B	45	17.7
C	52	20.5
D	46	18.1

Volumetric Details

Weight 12 Kg

Volume 0.32 mc

Package 1



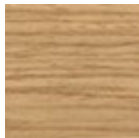
Joe S L TS Chair

design Midj R&D, 2015

Chair with four leg frame available in different finishes. Seat and backrest upholstered with leather, ecoleather, fabric or custom's fabric.

Colors and Materials

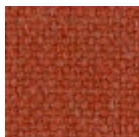
Structure



Lacquered ash

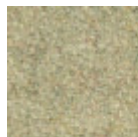
11 Colors

Coating



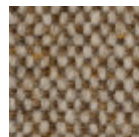
Cotton Club fabric

14 Colors



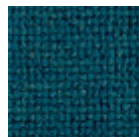
Fenix Wool fabric

16 Colors



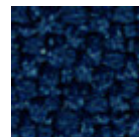
Main Line Flax fabric

16 Colors



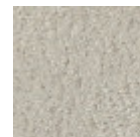
Manhattan fabric

13 Colors



Mirage fabric

15 Colors



Novabuk fabric

17 Colors



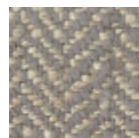
Tessuto Oceanic

13 Colors



Remix 3 fabric

19 Colors



Second fabric

11 Colors



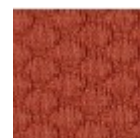
Velvet Superb

15 Colors



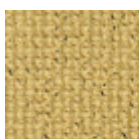
Uniform Melange Fabric

7 Colors



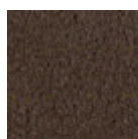
Visual fabric

13 Colors



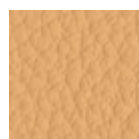
Yoredale fabric

14 Colors



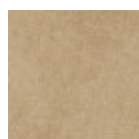
Vintage leather

8 Colors



Fiore leather

21 Colors



Vintage faux leather

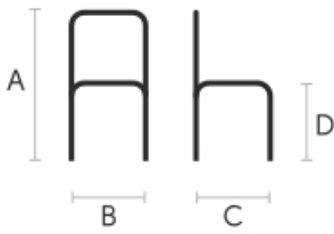
12 Colors



Secret faux leather

23 Colors

Dimensions



Volumetric Details

Weight 12 Kg
Volume 0.32 mc
Package 1

Certifications

CATAS
CATAS
EN 1728

	cm	inch
A	80	31.5
B	45	17.7
C	52	20.5
D	46	18.1

Downloads

[.dae JOE S L TS \(zip\)](https://www.midj.com/images/uploads/resources/3d-midj-joe-s-l-ts-tsl-dae.zip) - <https://www.midj.com/images/uploads/resources/3d-midj-joe-s-l-ts-tsl-dae.zip>

[.dxf JOE S L TS \(zip\)](https://www.midj.com/images/uploads/resources/3d-midj-joe-s-l-ts-tsl-dxf.zip) - <https://www.midj.com/images/uploads/resources/3d-midj-joe-s-l-ts-tsl-dxf.zip>

[.obj JOE S L TS \(zip\)](https://www.midj.com/images/uploads/resources/3d-midj-joe-s-l-ts-tsl-obj.zip) - <https://www.midj.com/images/uploads/resources/3d-midj-joe-s-l-ts-tsl-obj.zip>

[.stl JOE S L TS \(zip\)](https://www.midj.com/images/uploads/resources/3d-midj-joe-s-l-ts-tsl-stl.zip) - <https://www.midj.com/images/uploads/resources/3d-midj-joe-s-l-ts-tsl-stl.zip>

[.3ds JOE S L TS \(zip\)](https://www.midj.com/images/uploads/resources/3d-midj-joe-s-l-ts-tsl-3ds.zip) - <https://www.midj.com/images/uploads/resources/3d-midj-joe-s-l-ts-tsl-3ds.zip>

Materials Certifications

Lacquered ash

Ash wood is durable material, with good resistance and flexibility. Thanks to its porosity, it is ideal to be lacquered. Its original color is quite light: it can range from light blond, to pink and pale brown, with possible shades of green. In our set of samples, it is available in the natural finish and in numerous color variations: from the classic wood effects to the most pop colors of the moment. The ash used for our materials is European.

CLEANING AND MAINTENANCE

Ash is an easy-to-clean wood: to remove dust or light stains, rub the surface with a soft cloth, if necessary moistened in a solution of hot water or white vinegar, to help eliminate stains without altering the beauty and shine of the wood. Always dry the surface. In addition, you can choose to use specific products for wooden furniture.

These tips are cleaning recommendations and do not guarantee complete stain removal. We recommend that you always test the cleaning method on a hidden part of the item to check the resistance of the color.

Colour samples are to be considered approximate for each product. Slight color differences between a lot and the other are to be considered normal.

Materials Certifications

Cotton Club fabric

COMPOSITION: 70 % COT; 10% PES; 10% ACR; 10% AF
Abrasion resistance (Martindale) 100.000 cycles

Cotton Club by Flukso is a fabric made from latest generation regenerated cotton yarns. To create this fabric, specific fixing techniques were used, that give it and help maintaining a natural, slightly wavy and vibrated look.

CLEANING AND MAINTENANCE

Regular cleaning is important to extend the life of the coating, and keep its appearance unchanged. Dust and dirt can wear out the coating.

REGULAR CLEANING: vacuum frequently, at least once a week, at a power equal to half the device in use, choosing a smooth spout, without brushing.

STAIN REMOVAL: in case of slight stains, promptly clean the surface. Remove excess liquids or hard parts of dirt with a clean cloth, then proceed on the residue of the stain with a damp cloth or a neutral soap solution.

Remove the stain starting from the edge of the stain moving towards the center of it, then rinse with



Joe S M CU Chair

design Midj R&D, 2015

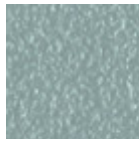
Chair with four legs frame in lacquered steel. Seat and backrest are upholstered in hide.

Colors and Materials

Structure



Papaya orange steel



Light blue metal



White steel



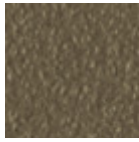
Bronze metal



Ash grey metal



Sand steel



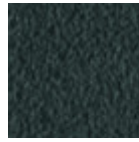
Fango steel



Golden yellow metal



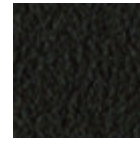
Pastel yellow steel



Grafite metal



Light grey steel



Brown steel



Black steel



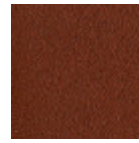
Ocher steel



Facepowder pink metal



Red steel



Bulgaro red metal



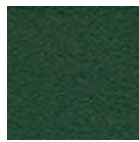
Cherry red metal



Pine green steel



Sage green metal

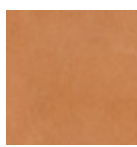


Dark green metal

Coating

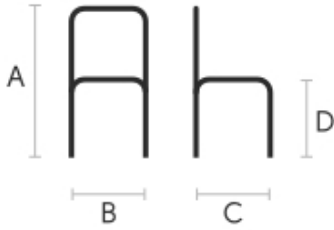


Hide
18 Colors



Tuscan hide
6 Colors

Dimensions



	cm	inch
A	80	31.5
B	45	17.7
C	52	20.5
D	46	18.1

Volumetric Details

Weight 12 Kg
Volume 0.32 mc
Package 1

Downloads

[.dae JOE S M CU \(zip\)](https://www.midj.com/images/uploads/resources/3d-midj-joe-s-m-cu-dae.zip) - <https://www.midj.com/images/uploads/resources/3d-midj-joe-s-m-cu-dae.zip>

[.dxf JOE S M CU \(zip\)](https://www.midj.com/images/uploads/resources/3d-midj-joe-s-m-cu-dxf.zip) - <https://www.midj.com/images/uploads/resources/3d-midj-joe-s-m-cu-dxf.zip>

[.obj JOE S M CU \(zip\)](https://www.midj.com/images/uploads/resources/3d-midj-joe-s-m-cu-obj.zip) - <https://www.midj.com/images/uploads/resources/3d-midj-joe-s-m-cu-obj.zip>

[.stl JOE S M CU \(zip\)](https://www.midj.com/images/uploads/resources/3d-midj-joe-s-m-cu-stl.zip) - <https://www.midj.com/images/uploads/resources/3d-midj-joe-s-m-cu-stl.zip>

[.3ds JOE S M CU \(zip\)](https://www.midj.com/images/uploads/resources/3d-midj-joe-s-m-cu-3ds.zip) - <https://www.midj.com/images/uploads/resources/3d-midj-joe-s-m-cu-3ds.zip>

Materials Certifications

Dark green metal

The technologies used in the previous phase of powder coating play a fundamental role in the final result of the processing. They are in fact essential to increase adherence paint on the metal surface and then guarantee its duration over time. The metal frames, following a total cleaning of the surface, pass through chemical conversion processes, creating a compact base that allows for better adhesion of the subsequent treatment. In the last phase the object subjected to the powder coating process is placed in a polymerization oven, going to form an adherent and extremely tight layer durable. This particular paint job is ideal for outdoor use.

To clean the surface, use a damp microfiber cloth with neutral soap or specific metal cleaning products. Avoid hitting or rubbing the surface with sharp objects. Do not use scourers or other abrasive materials, since they would inevitably scratch the surface. Do not leave rusty iron objects on the surface for too long.

These surface treatments are not suitable for outdoor use, but they guarantee excellent resistance to frequent use, dirt and dust.

Materials Certifications

Hide

FIRE RESISTANCE:
CLASSE 1IM
BS 5852 1-2

Hide is hygienic and practical, wear resistant and breathable. It is obtained from skin of cattle raised for food purposes, and subsequently treated with chromium salts. Any imperfections on the hide surface are a natural feature that guarantee its originality.

CLEANING AND MAINTENANCE

Dust the surface regularly, with a dry and soft cloth. In case of stains, use only a non-abrasive damp



Joe S M LG Chair

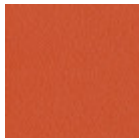
design Midj R&D, 2015

Chair with four leg frame available in lacquered steel in different finishes. Wooden seat and backrest.



Colors and Materials

Structure



Papaya orange steel



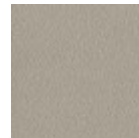
Light blue metal



White steel



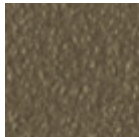
Bronze metal



Ash grey metal



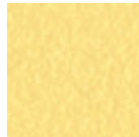
Sand steel



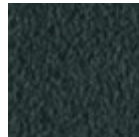
Fango steel



Golden yellow metal



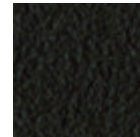
Pastel yellow steel



Grafite metal



Light grey steel



Brown steel



Black steel



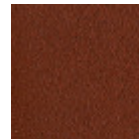
Ocher steel



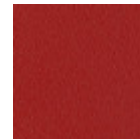
Facepowder pink metal



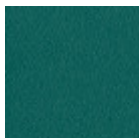
Red steel



Bulgaro red metal



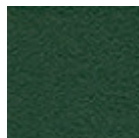
Cherry red metal



Pine green steel

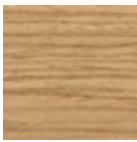


Sage green metal



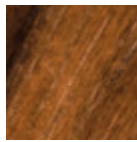
Dark green metal

Coating



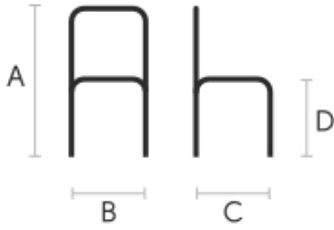
Stained ash veneered

10 Colors



Veneered flamed walnut

Dimensions



	cm	inch
A	80	31.5
B	45	17.7
C	52	20.5
D	46	18.1

Volumetric Details

Weight 6 Kg

Volume 0.32 mc

Package 1

Downloads

[.3ds Joe S M LG \(zip\)](https://www.midj.com/images/uploads/resources/3ds-midj-joe-s-m-lg-3ds.zip) - <https://www.midj.com/images/uploads/resources/3ds-midj-joe-s-m-lg-3ds.zip>

[.dae Joe S M LG \(zip\)](https://www.midj.com/images/uploads/resources/3ds-midj-joe-s-m-lg-dae.zip) - <https://www.midj.com/images/uploads/resources/3ds-midj-joe-s-m-lg-dae.zip>

[.dxf Joe S M LG \(zip\)](https://www.midj.com/images/uploads/resources/3ds-midj-joe-s-m-lg-dxf.zip) - <https://www.midj.com/images/uploads/resources/3ds-midj-joe-s-m-lg-dxf.zip>

[.obj Joe S M LG \(zip\)](https://www.midj.com/images/uploads/resources/3ds-midj-joe-s-m-lg-obj.zip) - <https://www.midj.com/images/uploads/resources/3ds-midj-joe-s-m-lg-obj.zip>

[.stl Joe S M LG \(zip\)](https://www.midj.com/images/uploads/resources/3ds-midj-joe-s-m-lg-stl.zip) - <https://www.midj.com/images/uploads/resources/3ds-midj-joe-s-m-lg-stl.zip>

Materials Certifications

Dark green metal

The technologies used in the previous phase of powder coating play a fundamental role in the final result of the processing. They are in fact essential to increase adherence paint on the metal surface and then guarantee its duration over time. The metal frames, following a total cleaning of the surface, pass through chemical conversion processes, creating a compact base that allows for better adhesion of the subsequent treatment. In the last phase the object subjected to the powder coating process is placed in a polymerization oven, going to form an adherent and extremely tight layer durable. This particular paint job is ideal for outdoor use.

To clean the surface, use a damp microfiber cloth with neutral soap or specific metal cleaning products. Avoid hitting or rubbing the surface with sharp objects. Do not use scourers or other abrasive materials, since they would inevitably scratch the surface. Do not leave rusty iron objects on the surface for too long.

These surface treatments are not suitable for outdoor use, but they guarantee excellent resistance to frequent use, dirt and dust.

Materials Certifications

Stained ash veneered

Veneered woods are the result of a process of gluing extremely thin sheets of wood applied to various types of supports to produce furnishing elements, which have a similar appearance to solid wood, but with better performance in terms of resistance to woodworms, lightness and greater stability over time. If exposed to light, and in any case with the passage of time, the color of the veneer changes. It may happen that furniture of the same color purchased after some time, show color differences. Upon request, the veneered parts can be supplied with certified origin from forests managed in a correct and responsible manner, according to the rigorous environmental standards established by the FSC circuit.

CLEANING AND MAINTENANCE



Joe S M TS LG Chair

design Midj R&D, 2015

Chair with four legs base in lacquered steel. Seat upholstered in leather, faux leather or fabric. Wooden backrest.

Colors and Materials

Structure



Papaya orange steel



Light blue metal



White steel



Bronze metal



Ash grey metal



Sand steel



Fango steel



Golden yellow metal



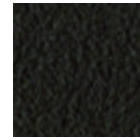
Pastel yellow steel



Grafite metal



Light grey steel



Brown steel



Black steel



Ocher steel



Facepowder pink metal



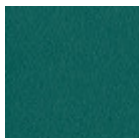
Red steel



Bulgaro red metal



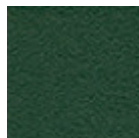
Cherry red metal



Pine green steel



Sage green metal



Dark green metal

Coating



Cotton Club fabric

14 Colors



Fenix Wool fabric

16 Colors



Main Line Flax fabric

16 Colors



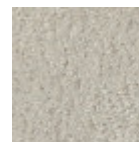
Manhattan fabric

13 Colors



Mirage fabric

15 Colors



Novabuk fabric

17 Colors



Tessuto Oceanic

13 Colors



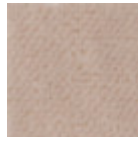
Remix 3 fabric

19 Colors



Second fabric

11 Colors



Velvet Superb

15 Colors



Uniform Melange Fabric

7 Colors



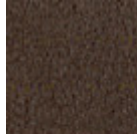
Visual fabric

13 Colors



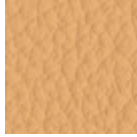
Yoredale fabric

14 Colors



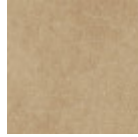
Vintage leather

8 Colors



Fiore leather

21 Colors



Vintage faux leather

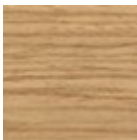
12 Colors



Secret faux leather

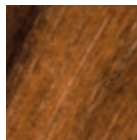
23 Colors

Extensions



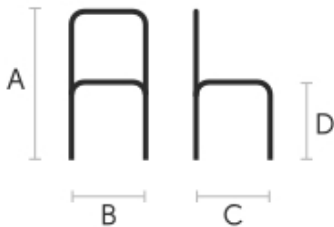
Stained ash veneered

10 Colors



Veneered flamed walnut

Dimensions



	cm	inch
A	80	31.5
B	45	17.7
C	52	20.5
D	46	18.1

Volumetric Details

Weight 6 Kg

Volume 0.32 mc

Package 1

Materials Certifications

Dark green metal

The technologies used in the previous phase of powder coating play a fundamental role in the final result of the processing. They are in fact essential to increase adherence paint on the metal surface and then guarantee its duration over time. The metal frames, following a total cleaning of the surface, pass through chemical conversion processes, creating a compact base that allows for better adhesion of the subsequent treatment. In the last phase the object subjected to the powder coating process is placed in a polymerization oven, going to form an adherent and extremely tight layer durable. This particular paint job is ideal for outdoor use.

To clean the surface, use a damp microfiber cloth with neutral soap or specific metal cleaning products. Avoid hitting or rubbing the surface with sharp objects. Do not use scourers or other abrasive materials, since they would inevitably scratch the surface. Do not leave rusty iron objects on the surface for too long.

These surface treatments are not suitable for outdoor use, but they guarantee excellent resistance to