



Maya S L TS Chair

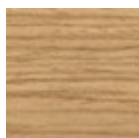
design Balutto Associati, 2018

Maya chair with four leg wooden frame.

Seat upholstered with leather, faux leather or fabric.

Colors and Materials

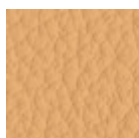
Structure



Lacquered ash

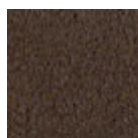
11 Colors

Coating



Fiore leather

21 Colors



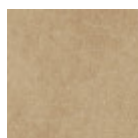
Vintage leather

8 Colors



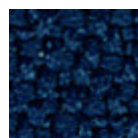
Secret faux leather

23 Colors



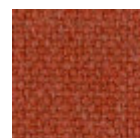
Vintage faux leather

12 Colors



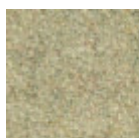
Mirage fabric

15 Colors



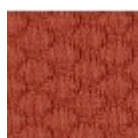
Cotton Club fabric

14 Colors



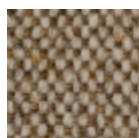
Fenix Wool fabric

16 Colors



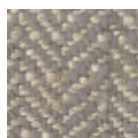
Visual fabric

13 Colors



Main Line Flax fabric

16 Colors



Second fabric

11 Colors



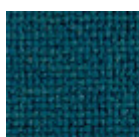
Velvet Superb

15 Colors



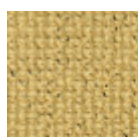
Tessuto Oceanic

13 Colors



Manhattan fabric

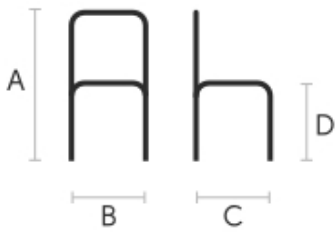
13 Colors



Yoredale fabric

14 Colors

Dimensions



Volumetric Details

Weight 12 Kg
Volume 0.28 mc
Package 1

	cm	inch
A	78	30.7
B	52	20.5
C	49	19.3
D	45	17.7

Downloads

- [.3ds Maya S TS \(zip\)](https://www.midj.com/images/uploads/resources/3d-midj-maya-s-ts-3ds.zip) - <https://www.midj.com/images/uploads/resources/3d-midj-maya-s-ts-3ds.zip>
[.dae Maya S TS \(zip\)](https://www.midj.com/images/uploads/resources/3d-midj-maya-s-ts-dae.zip) - <https://www.midj.com/images/uploads/resources/3d-midj-maya-s-ts-dae.zip>
[.dxf Maya S TS \(zip\)](https://www.midj.com/images/uploads/resources/3d-midj-maya-s-ts-dxf.zip) - <https://www.midj.com/images/uploads/resources/3d-midj-maya-s-ts-dxf.zip>
[.obj Maya S TS \(zip\)](https://www.midj.com/images/uploads/resources/3d-midj-maya-s-ts-obj.zip) - <https://www.midj.com/images/uploads/resources/3d-midj-maya-s-ts-obj.zip>
[.stl Maya S TS \(zip\)](https://www.midj.com/images/uploads/resources/3d-midj-maya-s-ts-stl.zip) - <https://www.midj.com/images/uploads/resources/3d-midj-maya-s-ts-stl.zip>

Materials Certifications

Lacquered ash

Ash wood is durable material, with good resistance and flexibility. Thanks to its porosity, it is ideal to be lacquered. Its original color is quite light: it can range from light blond, to pink and pale brown, with possible shades of green. In our set of samples, it is available in the natural finish and in numerous color variations: from the classic wood effects to the most pop colors of the moment. The ash used for our materials is European.

CLEANING AND MAINTENANCE

Ash is an easy-to-clean wood: to remove dust or light stains, rub the surface with a soft cloth, if necessary moistened in a solution of hot water or white vinegar, to help eliminate stains without altering the beauty and shine of the wood. Always dry the surface. In addition, you can choose to use specific products for wooden furniture.

These tips are cleaning recommendations and do not guarantee complete stain removal. We recommend that you always test the cleaning method on a hidden part of the item to check the resistance of the color.

Colour samples are to be considered approximate for each product. Slight color differences between a lot and the other are to be considered normal.

Materials Certifications

Fiore leather

COMPOSITION: 100% leather

FIRE RESISTANCE:
CAL TB-117 (2013, Sec. 1)
BS 5852:1979
BS EN 1021-1-2:2006

Fiore leather is a natural product and this is why it can show signs such as wrinkles, veining and scars that indicate the animal origin of the product. These signs, together with slightly color differences, are distinctive elements that enhance its beauty and distinguish it from faux leather or other artificial products. Fiore is a bovine leather from animals of European origin, finished with water-based dyeing with resins and pigments. Fiore leather has the ability of improving with time and use, both in softness and shine.

Dust the leather product regularly with a soft and dry cloth. In case of stains, rub the affected area with a



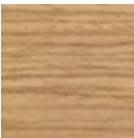
Maya S L LG Chair

design Balutto Associati, 2018

Maya chair with wooden frame, seat and backrest.

Colors and Materials

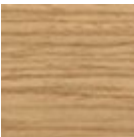
Structure



Lacquered ash

11 Colors

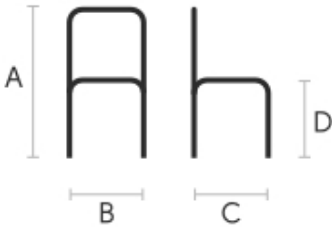
Coating



Lacquered ash

11 Colors

Dimensions



	cm	inch
A	78	30.7
B	52	20.5
C	49	19.3
D	45	17.7

Volumetric Details

Weight 12 Kg
Volume 0.28 mc
Package 1