



Montera H65 L LG Stool

design AtelierNanni, 2017

Montera stool with a four leg wooden base.

Height: 65 cm or 75 cm



Colors and Materials

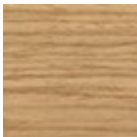
Structure



Lacquered ash

11 Colors

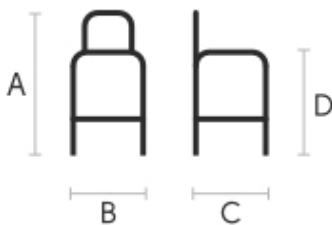
Coating



Lacquered ash

11 Colors

Dimensions



	cm	inch
A	86	33.9
B	54	21.3
C	50	19.7
D	66	26

Volumetric Details

Weight 9 Kg

Volume 0.29 mc

Package 1



Montera H65 L TS Stool

design AtelierNanni, 2017

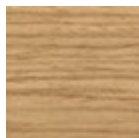
Montera stool with four-leg wooden base. Seat upholstered with leather, faux leather or fabric.

Height: 65 cm



Colors and Materials

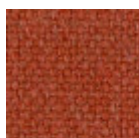
Structure



Lacquered ash

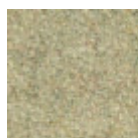
11 Colors

Coating



Cotton Club fabric

14 Colors



Fenix Wool fabric

16 Colors



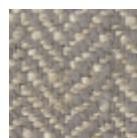
Main Line Flax fabric

16 Colors



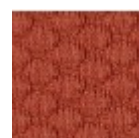
Mirage fabric

15 Colors



Second fabric

11 Colors



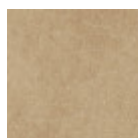
Visual fabric

13 Colors



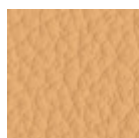
Secret faux leather

23 Colors



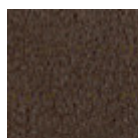
Vintage faux leather

12 Colors



Fiore leather

21 Colors



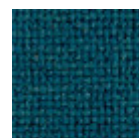
Vintage leather

8 Colors



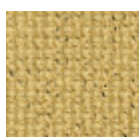
Tessuto Oceanic

13 Colors



Manhattan fabric

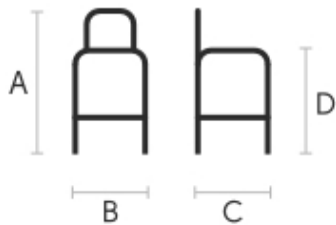
13 Colors



Yoredale fabric

14 Colors

Dimensions



Volumetric Details

Weight 9 Kg
Volume 0.29 mc
Package 1

	cm	inch
A	86	33.9
B	54	21.3
C	50	19.7
D	66	26

Materials Certifications

Lacquered ash

Ash wood is durable material, with good resistance and flexibility. Thanks to its porosity, it is ideal to be lacquered. Its original color is quite light: it can range from light blond, to pink and pale brown, with possible shades of green. In our set of samples, it is available in the natural finish and in numerous color variations: from the classic wood effects to the most pop colors of the moment. The ash used for our materials is European.

CLEANING AND MAINTENANCE

Ash is an easy-to-clean wood: to remove dust or light stains, rub the surface with a soft cloth, if necessary moistened in a solution of hot water or white vinegar, to help eliminate stains without altering the beauty and shine of the wood. Always dry the surface. In addition, you can choose to use specific products for wooden furniture.

These tips are cleaning recommendations and do not guarantee complete stain removal. We recommend that you always test the cleaning method on a hidden part of the item to check the resistance of the color.

Colour samples are to be considered approximate for each product. Slight color differences between a lot and the other are to be considered normal.

Materials Certifications

Cotton Club fabric

COMPOSITION: 70 % COT; 10% PES; 10% ACR; 10% AF
Abrasion resistance (Martindale) 100.000 cycles

Cotton Club by Flukso is a fabric made from latest generation regenerated cotton yarns. To create this fabric, specific fixing techniques were used, that give it and help maintaining a natural, slightly wavy and vibrated look.

CLEANING AND MAINTENANCE

Regular cleaning is important to extend the life of the coating, and keep its appearance unchanged. Dust and dirt can wear out the coating.

REGULAR CLEANING: vacuum frequently, at least once a week, at a power equal to half the device in use, choosing a smooth spout, without brushing.

STAIN REMOVAL: in case of slight stains, promptly clean the surface. Remove excess liquids or hard parts of dirt with a clean cloth, then proceed on the residue of the stain with a damp cloth or a neutral soap solution.

Remove the stain starting from the edge of the stain moving towards the center of it, then rinse with water. Let dry, avoiding direct exposure to sunlight.

For localized and more persistent stains, promptly dissolve the stain with colorless ethyl alcohol diluted in 20% water, gently rub and then treat with a neutral soap solution, then rinse well. Do not use bleach.

These tips are cleaning recommendations and do not guarantee complete stain removal. In case of large stains, we recommend contacting an operator specialized in upholstered products cleaning.

We recommend to not expose light colored coating for a prolonged time to garments treated with colors with poor dyeing fastness, as the color pigments could penetrate the surface of the fabric, without being able to be removed.



Montera H75 L CU Stool

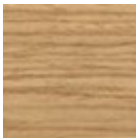
design AtelierNanni, 2017

Montera stool with wooden structure and seat upholstered with hide or Tuscan hide.

Height: 75 cm

Colors and Materials

Structure



Lacquered ash

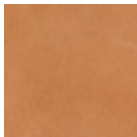
11 Colors

Coating



Hide

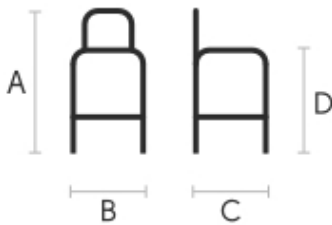
18 Colors



Tuscan hide

6 Colors

Dimensions



	cm	inch
A	96	37.8
B	54	21.3
C	50	19.7
D	76	29.9

Volumetric Details

Weight 9 Kg
Volume 0.33 mc
Package 1



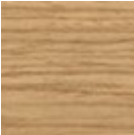
Montera H75 L LG Stool

design AtelierNanni, 2017

Stool with four-legs wooden base.

Colors and Materials

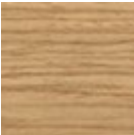
Structure



Lacquered ash

11 Colors

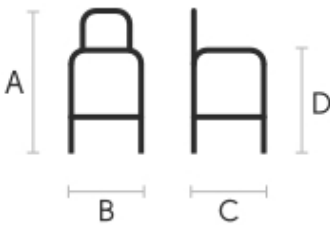
Coating



Lacquered ash

11 Colors

Dimensions



	cm	inch
A	96	37.8
B	54	21.3
C	50	19.7
D	76	29.9

Volumetric Details

Weight 9 Kg
Volume 0.33 mc
Package 1



Montera H75 L TS Stool

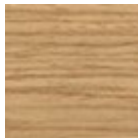
design AtelierNanni, 2017

Montera stool with four-leg wooden base. Seat upholstered with leather, faux leather or fabric.

Height: 75 cm

Colors and Materials

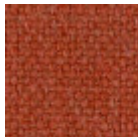
Structure



Lacquered ash

11 Colors

Coating



Cotton Club fabric

14 Colors



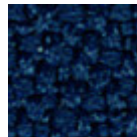
Fenix Wool fabric

16 Colors



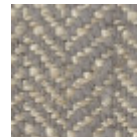
Main Line Flax fabric

16 Colors



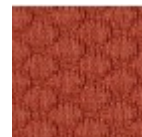
Mirage fabric

15 Colors



Second fabric

11 Colors



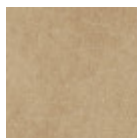
Visual fabric

13 Colors



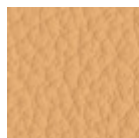
Secret faux leather

23 Colors



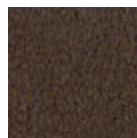
Vintage faux leather

12 Colors



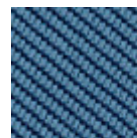
Fiore leather

21 Colors



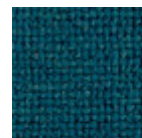
Vintage leather

8 Colors



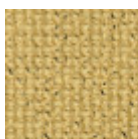
Tessuto Oceanic

13 Colors



Manhattan fabric

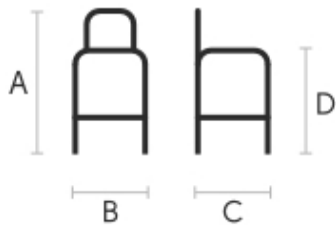
13 Colors



Yoredale fabric

14 Colors

Dimensions



Volumetric Details

Weight 9 Kg
Volume 0.33 mc
Package 1

	cm	inch
A	96	37.8
B	54	21.3
C	50	19.7
D	76	29.9

Materials Certifications

Lacquered ash

Ash wood is durable material, with good resistance and flexibility. Thanks to its porosity, it is ideal to be lacquered. Its original color is quite light: it can range from light blond, to pink and pale brown, with possible shades of green. In our set of samples, it is available in the natural finish and in numerous color variations: from the classic wood effects to the most pop colors of the moment. The ash used for our materials is European.

CLEANING AND MAINTENANCE

Ash is an easy-to-clean wood: to remove dust or light stains, rub the surface with a soft cloth, if necessary moistened in a solution of hot water or white vinegar, to help eliminate stains without altering the beauty and shine of the wood. Always dry the surface. In addition, you can choose to use specific products for wooden furniture.

These tips are cleaning recommendations and do not guarantee complete stain removal. We recommend that you always test the cleaning method on a hidden part of the item to check the resistance of the color.

Colour samples are to be considered approximate for each product. Slight color differences between a lot and the other are to be considered normal.

Materials Certifications

Cotton Club fabric

COMPOSITION: 70 % COT; 10% PES; 10% ACR; 10% AF
Abrasion resistance (Martindale) 100.000 cycles

Cotton Club by Flukso is a fabric made from latest generation regenerated cotton yarns. To create this fabric, specific fixing techniques were used, that give it and help maintaining a natural, slightly wavy and vibrated look.

CLEANING AND MAINTENANCE

Regular cleaning is important to extend the life of the coating, and keep its appearance unchanged. Dust and dirt can wear out the coating.

REGULAR CLEANING: vacuum frequently, at least once a week, at a power equal to half the device in use, choosing a smooth spout, without brushing.

STAIN REMOVAL: in case of slight stains, promptly clean the surface. Remove excess liquids or hard parts of dirt with a clean cloth, then proceed on the residue of the stain with a damp cloth or a neutral soap solution.

Remove the stain starting from the edge of the stain moving towards the center of it, then rinse with water. Let dry, avoiding direct exposure to sunlight.

For localized and more persistent stains, promptly dissolve the stain with colorless ethyl alcohol diluted in 20% water, gently rub and then treat with a neutral soap solution, then rinse well. Do not use bleach.

These tips are cleaning recommendations and do not guarantee complete stain removal. In case of large stains, we recommend contacting an operator specialized in upholstered products cleaning.

We recommend to not expose light colored coating for a prolonged time to garments treated with colors with poor dyeing fastness, as the color pigments could penetrate the surface of the fabric, without being able to be removed.



Montera H65 L CU Stool

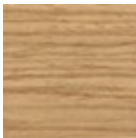
design AtelierNanni, 2017

Montera stool with wooden structure and seat upholstered with hide or Tuscan hide.

Height: 65 cm

Colors and Materials

Structure



Lacquered ash

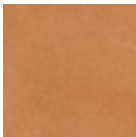
11 Colors

Coating



Hide

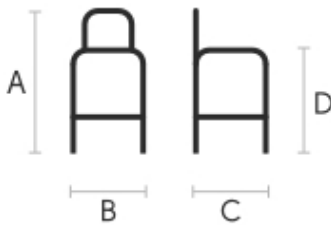
18 Colors



Tuscan hide

6 Colors

Dimensions



	cm	inch
A	86	33.9
B	54	21.3
C	50	19.7
D	66	26

Volumetric Details

Weight 9 Kg
Volume 0.29 mc
Package 1