

# MIDJ



## Nenè rectangular Table

design Paolo Vernier, 2013

Nenè rectangular table with four leg base in lacquered metal.

Melamine top.

### Colors and Materials

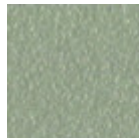
#### Structure



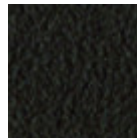
White steel



Black steel



Sand steel



Brown steel



Grafite metal

#### Coating



Melamine

8 Colors

### Dimensions



|   | cm  | inch |
|---|-----|------|
| A | 75  | 29.5 |
| B | 140 | 55.1 |
| C | 90  | 35.4 |

### Volumetric Details

Weight 32 Kg

Volume 0.29 mc

Package 3

### Downloads

3D Nenè 140x90 (zip) - <https://www.midj.com/images/uploads/resources/nene-140x90-3d.zip>

# MIDJ



## Nenè square Table

design Paolo Vernier, 2013

Nenè square table with four leg base in lacquered metal. Stackable up to 4 pieces.

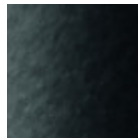
Melamine or HPL top.

### Colors and Materials

#### Structure



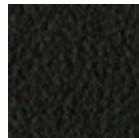
White steel



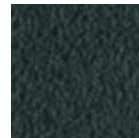
Black steel



Sand steel



Brown steel



Grafite metal

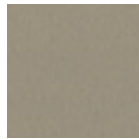
#### Coating



White Melamine



Black melamine



Sand melamine



Graphite melamine



White hpl black core



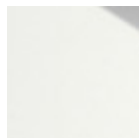
Black hpl



Hpl cemento



Hpl corten



White hpl white core

### Dimensions



|                                 | A (cm)<br>(inch) | B (cm)<br>(inch) | C (cm)<br>(inch) |
|---------------------------------|------------------|------------------|------------------|
| <b>75x75<br/>(cm)</b><br>(inch) | 75<br>29.5       | 75<br>29.5       | 75<br>29.5       |
| <b>85x85<br/>(cm)</b><br>(inch) | 75<br>29.5       | 85<br>33.5       | 85<br>33.5       |

### Volumetric Details

Weight 22.5 Kg  
Volume 0.29 mc  
Package 3