



Ola S M Chair

design Paolo Vernier, 2016

Ola chair with frame and shell in laquered metal, suitable for outdoor use.

It is stackable up to four units.

Colors and Materials

Structure



White steel



Sand steel



Pastel yellow steel



Grafite metal



Black steel



Light blue metal



Ocean blue steel



Bronze metal



Fango steel



Light grey steel



Brown steel



Ocher steel



Facepowder pink metal

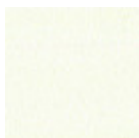


Red steel

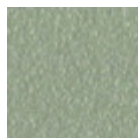


Sage green metal

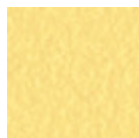
Coating



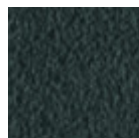
White steel



Sand steel



Pastel yellow steel



Grafite metal



Black steel



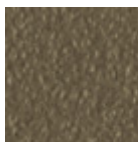
Light blue metal



Ocean blue steel



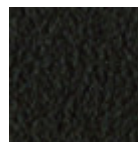
Bronze metal



Fango steel



Light grey steel



Brown steel



Ocher steel



Facepowder pink metal

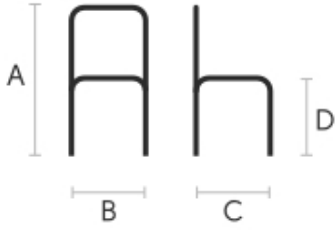


Red steel



Sage green metal

Dimensions



	cm	inch
A	82	32.3
B	49	19.3
C	54	21.3
D	45	17.7

Volumetric Details

Weight 7 Kg

Volume 0.31 mc

Package 1



Ola P M CU Armchair

design Paolo Vernier, 2016

Ola armchair with structure in lacquered metal and shell upholstered in hide, regenerated hide or Tuscan hide.

The Ola armchair is stackable up to four units.

Colors and Materials

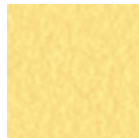
Structure



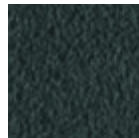
White steel



Sand steel



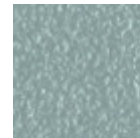
Pastel yellow steel



Grafite metal



Black steel



Light blue metal



Ocean blue steel



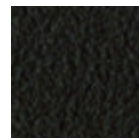
Bronze metal



Fango steel



Light grey steel



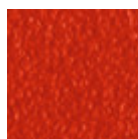
Brown steel



Ocher steel



Facepowder pink metal



Red steel

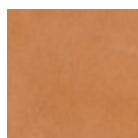


Sage green metal

Coating

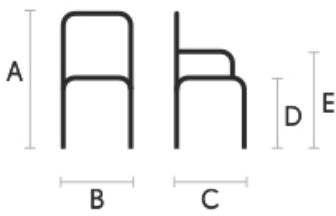


Hide
18 Colors



Tuscan hide
6 Colors

Dimensions



Volumetric Details

Weight 7.25 Kg

Volume 0.31 mc

Package 1

	cm	inch
A	82	32.3
B	52	20.5
C	54	21.3
D	45	17.7
E	65	25.6

Materials Certifications

Hide

FIRE RESISTANCE:

CLASSE 1IM

BS 5852 1-2

Hide is hygienic and practical, wear resistant and breathable. It is obtained from skin of cattle raised for food purposes, and subsequently treated with chromium salts. Any imperfections on the hide surface are a natural feature that guarantee its originality.

CLEANING AND MAINTENANCE

Dust the surface regularly, with a dry and soft cloth. In case of stains, use only a non-abrasive damp cloth, and gently rub the area by moving the cloth in a circular direction starting from the edges of the stain towards the center. We recommend to act promptly: a delay could compromise the cleaning result. Do not use products that contain solvents or alcohol since they can damage the surface. Dry immediately after treatment. For a good conservation of the product, avoid direct sunlight, that can alter its characteristics and color, as well as exposure to heat sources.

We recommend that you always test the cleaning method on a hidden part of the item to check the resistance of the color. These tips are cleaning recommendations and do not guarantee complete stain removal.

Colour samples are to be considered approximate for each product. Slight color differences between a lot and the other are to be considered normal.

Materials Certifications

Tuscan hide

TYPE: NABUK TUSCAN HIDE

Nabuk Tuscan hide is obtained by working on the external part of the animal's skin, the fiore part. The surface is polished by using specific machinery, with the aim of obtaining a soft and velvety surface.

Nabuk is a very fine hide, as only the best leathers are suitable for this type of processing, but at the same time it must

be carefully maintained. Small imperfections on the surface guarantee its originality and naturalness, and are not to be considered manufacturing defects. This material is not water repellent and fears humidity.

To maintain the beauty of the original color, avoid putting the Nabuk Tuscan hide into contact with water or any other liquid. Absorption of liquid can lead to an alteration of the finish.

TYPE: FIORE TUSCAN HIDE

Fiore Tuscan hide is a high-quality natural material, and softness is its main feature. Hide is not afraid to show the signs of time, that contribute to make it a unique product. Possible imperfections such as scratches, scars or stains on its surface are a natural feature that guarantee its originality and quality.

This material is not water repellent and fears humidity. To maintain the beauty of the original color, avoid putting the Fiore Tuscan hide into contact with water or any other liquid. Absorption of liquid can lead to an alteration of the finish.

CLEANING AND MAINTENANCE

Hide is a fine and durable material, but still needs special attention. Do not directly expose it to light or



Ola P M LG Chair

design Paolo Vernier, 2016

Ola armchair with frame in lacquered metal and wooden shell.

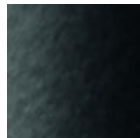
The Ola armchair is stackable up to four units and has the CATAS certification.

Colors and Materials

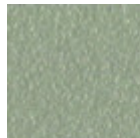
Structure



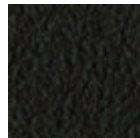
White steel



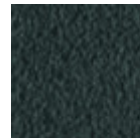
Black steel



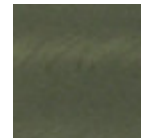
Sand steel



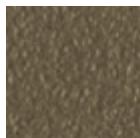
Brown steel



Grafite metal



Industrial steel



Fango steel



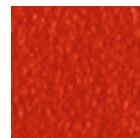
Bronze metal



Pastel yellow steel



Ocher steel



Red steel



Sage green metal



Light blue metal



Ocean blue steel

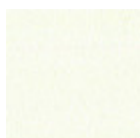


Light grey steel

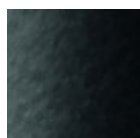


Facepowder pink metal

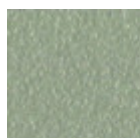
Coating



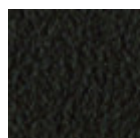
White steel



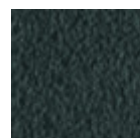
Black steel



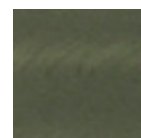
Sand steel



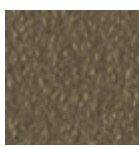
Brown steel



Grafite metal



Industrial steel



Fango steel



Bronze metal



Pastel yellow steel



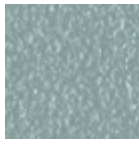
Ocher steel



Red steel



Sage green metal



Light blue metal



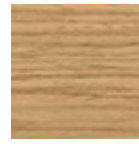
Ocean blue steel



Light grey steel



Facepowder pink metal



Stained ash veneered

10 Colors

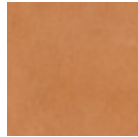


Veneered flamed walnut



Hide

18 Colors



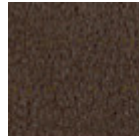
Tuscan hide

6 Colors



Fiore leather

21 Colors



Vintage leather

8 Colors



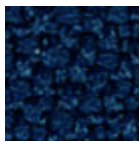
Secret faux leather

23 Colors



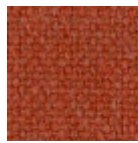
Vintage faux leather

12 Colors



Mirage fabric

15 Colors



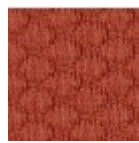
Cotton Club fabric

14 Colors



Fenix Wool fabric

16 Colors



Visual fabric

13 Colors



Main Line Flax fabric

16 Colors



Second fabric

11 Colors



Velvet Superb

15 Colors

Dimensions



	cm	inch
A	82	32.3
B	52	20.5
C	54	21.3
D	45	17.7
E	65	25.6

Volumetric Details

Weight 14.5 Kg

Volume 0.32 mc

Package 1

Downloads

[Ola catalog \(pdf\)](https://www.midj.com/images/uploads/resources/Midj_2016_catalogo_Ola.pdf) - https://www.midj.com/images/uploads/resources/Midj_2016_catalogo_Ola.pdf

[.3ds Ola P M LG \(zip\)](https://www.midj.com/images/uploads/resources/3d-midj-ola-p-m-lg-3ds.zip) - <https://www.midj.com/images/uploads/resources/3d-midj-ola-p-m-lg-3ds.zip>

[.dae Ola P M LG \(zip\)](https://www.midj.com/images/uploads/resources/3d-midj-ola-p-m-lg-dae.zip) - <https://www.midj.com/images/uploads/resources/3d-midj-ola-p-m-lg-dae.zip>

[.dxf Ola P M LG \(zip\)](https://www.midj.com/images/uploads/resources/3d-midj-ola-p-m-lg-dxf.zip) - <https://www.midj.com/images/uploads/resources/3d-midj-ola-p-m-lg-dxf.zip>

[.obj Ola P M LG \(zip\)](https://www.midj.com/images/uploads/resources/3d-midj-ola-p-m-lg-obj.zip) - <https://www.midj.com/images/uploads/resources/3d-midj-ola-p-m-lg-obj.zip>



Ola P M TS Armchair

design Paolo Vernier, 2016

Ola armchair with laquered metal frame and upholstered with leather, faux leather or fabric.

Stackable up to four units.

Colors and Materials

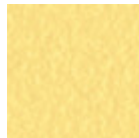
Structure



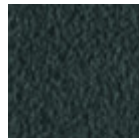
White steel



Sand steel



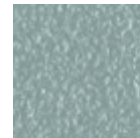
Pastel yellow steel



Grafite metal



Black steel



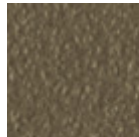
Light blue metal



Ocean blue steel



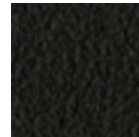
Bronze metal



Fango steel



Light grey steel



Brown steel



Ocher steel



Facepowder pink metal

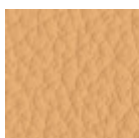


Red steel

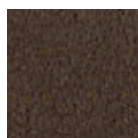


Sage green metal

Coating



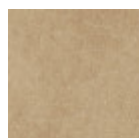
Fiore leather
21 Colors



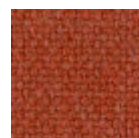
Vintage leather
8 Colors



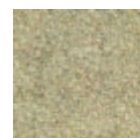
Secret faux leather
23 Colors



Vintage faux leather
12 Colors



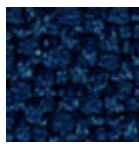
Cotton Club fabric
14 Colors



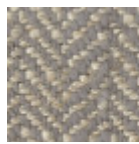
Fenix Wool fabric
16 Colors

**Main Line Flax fabric**

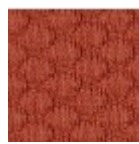
16 Colors

**Mirage fabric**

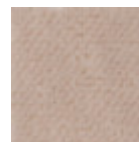
15 Colors

**Second fabric**

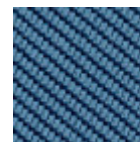
11 Colors

**Visual fabric**

13 Colors

**Velvet Superb**

15 Colors

**Tessuto Oceanic**

13 Colors

**Manhattan fabric**

13 Colors

**Yoredale fabric**

14 Colors

Dimensions



	cm	inch
A	82	32.3
B	52	20.5
C	54	21.3
D	45	27.7
E	65	25.6

Volumetric Details

Weight 7.25 Kg**Volume** 0.32 mc**Package** 1

Downloads

[.3ds Ola P M TS \(zip\)](https://www.midj.com/images/uploads/resources/3d-midj-ola-p-m-ts-3ds.zip) - <https://www.midj.com/images/uploads/resources/3d-midj-ola-p-m-ts-3ds.zip>[.dae Ola P M TS \(zip\)](https://www.midj.com/images/uploads/resources/3d-midj-ola-p-m-ts-dae.zip) - <https://www.midj.com/images/uploads/resources/3d-midj-ola-p-m-ts-dae.zip>[.dwg Ola P M TS \(zip\)](https://www.midj.com/images/uploads/resources/3d-midj-ola-p-m-ts-dwg.zip) - <https://www.midj.com/images/uploads/resources/3d-midj-ola-p-m-ts-dwg.zip>[.dxf Ola P M TS \(zip\)](https://www.midj.com/images/uploads/resources/3d-midj-ola-p-m-ts-dxf.zip) - <https://www.midj.com/images/uploads/resources/3d-midj-ola-p-m-ts-dxf.zip>[.obj Ola P M TS \(zip\)](https://www.midj.com/images/uploads/resources/3d-midj-ola-p-m-ts-obj.zip) - <https://www.midj.com/images/uploads/resources/3d-midj-ola-p-m-ts-obj.zip>

Materials Certifications

Fiore leather

COMPOSITION: 100% leather

FIRE RESISTANCE:

CAL TB-117 (2013, Sec. 1)

BS 5852:1979

BS EN 1021-1-2:2006

Fiore leather is a natural product and this is why it can show signs such as wrinkles, veining and scars that indicate the animal origin of the product. These signs, together with slightly color differences, are distinctive elements that enhance its beauty and distinguish it from faux leather or other artificial products. Fiore

is a bovine leather from animals of European origin, finished with water-based dyeing with resins and pigments. Fiore leather has the ability of improving with time and use, both in softness and shine.

Dust the leather product regularly with a soft and dry cloth. In case of stains, rub the affected area with a soft and clean cloth, moistened with water or to use a light solution of water and mild soap, to be applied gently with a wet cloth. Move the cloth in a circular direction, starting from edges of the stain towards the center. Rinse well with a damp cloth. Dry immediately after treatment. Avoid direct sunlight and exposure to heat sources.

We recommend that you always test the cleaning method on a hidden part of the item to check the resistance of the color.

These tips are cleaning recommendations and do not guarantee complete stain removal. In case of large



Ola P M Armchair

design Paolo Vernier, 2016

Ola armchair with frame and shell in laquered metal, suitable for outdoor use.

It is stackable up to four units.

Colors and Materials

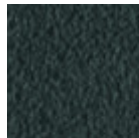
Structure



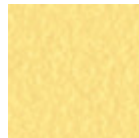
White steel



Sand steel



Grafite metal



Pastel yellow steel



Black steel



Light blue metal



Ocean blue steel



Bronze metal



Fango steel



Light grey steel



Brown steel



Ocher steel



Facepowder pink metal

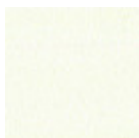


Red steel

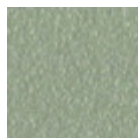


Sage green metal

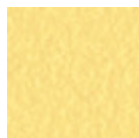
Coating



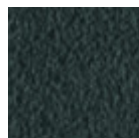
White steel



Sand steel



Pastel yellow steel



Grafite metal



Black steel



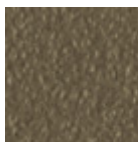
Light blue metal



Ocean blue steel



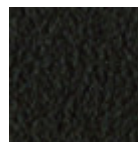
Bronze metal



Fango steel



Light grey steel



Brown steel



Ocher steel



Facepowder pink metal



Red steel



Sage green metal

Dimensions



	cm	inch
A	82	32.3
B	52	20.5
C	54	21.3
D	45	17.7
E	65	25.6

Volumetric Details

Weight 7.25 Kg

Volume 0.32 mc

Package 1



Ola S M CU Chair

design Paolo Vernier, 2016

Ola chair with structure in lacquered metal and shell upholstered in hide, regenerated hide or Tuscan hide.

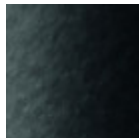
The Ola chair is stackable up to four units and has the CATAS certification.

Colors and Materials

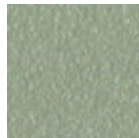
Structure



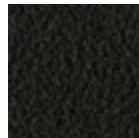
White steel



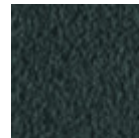
Black steel



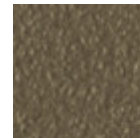
Sand steel



Brown steel



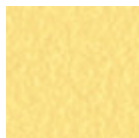
Grafite metal



Fango steel



Bronze metal



Pastel yellow steel



Ocher steel



Red steel



Sage green metal



Light blue metal



Ocean blue steel



Light grey steel



Facepowder pink metal

Coating

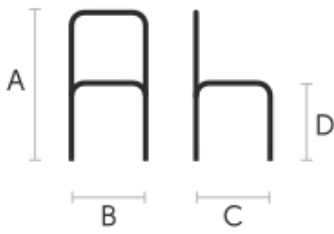


Hide
18 Colors



Tuscan hide
6 Colors

Dimensions



Volumetric Details

Weight 14 Kg
Volume 0.31 mc
Package 1

Certifications

CATAS
Catas
 EN 1728

	cm	inch
A	82	32.3
B	49	19.3
C	54	21.3
D	45	17.7

Downloads

Ola Collection (pdf) - https://www.midj.com/images/uploads/resources/Midj_2016_catalogo_Ola.pdf

3D Ola S (zip) - <https://www.midj.com/images/uploads/resources/ola-s-ts-3d.zip>

Materials Certifications

Hide

FIRE RESISTANCE:
 CLASSE 1IM
 BS 5852 1-2

Hide is hygienic and practical, wear resistant and breathable. It is obtained from skin of cattle raised for food purposes, and subsequently treated with chromium salts. Any imperfections on the hide surface are a natural feature that guarantee its originality.

CLEANING AND MAINTENANCE

Dust the surface regularly, with a dry and soft cloth. In case of stains, use only a non-abrasive damp cloth, and gently rub the area by moving the cloth in a circular direction starting from the edges of the stain towards the center. We recommend to act promptly: a delay could compromise the cleaning result. Do not use products that contain solvents or alcohol since they can damage the surface. Dry immediately after treatment. For a good conservation of the product, avoid direct sunlight, that can alter its characteristics and color, as well as exposure to heat sources.

We recommend that you always test the cleaning method on a hidden part of the item to check the resistance of the color. These tips are cleaning recommendations and do not guarantee complete stain removal.

Colour samples are to be considered approximate for each product. Slight color differences between a lot and the other are to be considered normal.

Materials Certifications

Tuscan hide

TYPE: NABUK TUSCAN HIDE

Nabuk Tuscan hide is obtained by working on the external part of the animal's skin, the fiore part. The surface is polished by using specific machinery, with the aim of obtaining a soft and velvety surface. Nabuk is a very fine hide, as only the best leathers are suitable for this type of processing, but at the same time it must be carefully maintained. Small imperfections on the surface guarantee its originality and naturalness, and are not to be considered manufacturing defects. This material is not water repellent and fears humidity. To maintain the beauty of the original color, avoid putting the Nabuk Tuscan hide into contact with water or any other liquid. Absorption of liquid can lead to an alteration of the finish.

TYPE: FIORE TUSCAN HIDE

Fiore Tuscan hide is a high-quality natural material, and softness is its main feature. Hide is not afraid to show the signs of time, that contribute to make it a unique product. Possible imperfections such as scratches, scars or stains on its surface are a natural feature that guarantee its originality and quality. This material is not water repellent and fears humidity. To maintain the beauty of the original color, avoid



Ola S M LG Chair

design Paolo Vernier, 2016

Ola chair with frame in lacquered metal and wooden shell.

The Ola chair is stackable up to four units and has the CATAS certification.

Colors and Materials

Structure



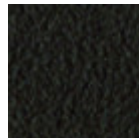
White steel



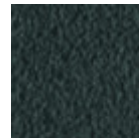
Black steel



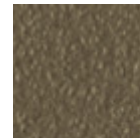
Sand steel



Brown steel



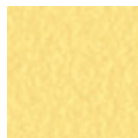
Grafite metal



Fango steel



Bronze metal



Pastel yellow steel



Ocher steel



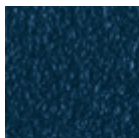
Red steel



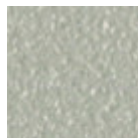
Sage green metal



Light blue metal



Ocean blue steel

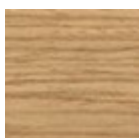


Light grey steel

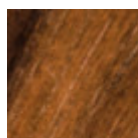


Facepowder pink metal

Coating



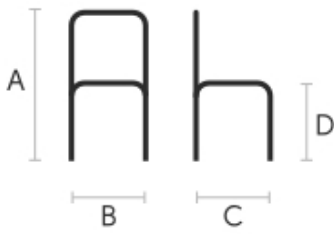
Stained ash veneered



Veneered flamed walnut

10 Colors

Dimensions



Volumetric Details

Weight 14 Kg
Volume 0.31 mc
Package 1

Certifications

CATAS
CATAS
 EN 1728

	cm	inch
A	82	32.3
B	49	19.3
C	54	21.3
D	45	17.7

Downloads

Ola Catalog (pdf) - https://www.midj.com/images/uploads/resources/Midj_2016_catalogo_Ola.pdf
.3ds Ola S M LG (zip) - <https://www.midj.com/images/uploads/resources/3d-midj-ola-s-m-lg-3ds.zip>
.dae Ola S M LG (zip) - <https://www.midj.com/images/uploads/resources/3d-midj-ola-s-m-lg-dae.zip>
.dxf Ola S M LG (zip) - <https://www.midj.com/images/uploads/resources/3d-midj-ola-s-m-lg-dxf.zip>
.obj Ola S M LG (zip) - <https://www.midj.com/images/uploads/resources/3d-midj-ola-s-m-lg-obj.zip>

Materials Certifications

Stained ash veneered

Veneered woods are the result of a process of gluing extremely thin sheets of wood applied to various types of supports to produce furnishing elements, which have a similar appearance to solid wood, but with better performance in terms of resistance to woodworms, lightness and greater stability over time. If exposed to light, and in any case with the passage of time, the color of the veneer changes. It may happen that furniture of the same color purchased after some time, show color differences. Upon request, the veneered parts can be supplied with certified origin from forests managed in a correct and responsible manner, according to the rigorous environmental standards established by the FSC circuit.

CLEANING AND MAINTENANCE

For ordinary cleaning of veneered woods, use a cloth moistened with neutral soap well diluted in water or specific products. Always dry after each application with a dry cloth or paper towel. Do not use abrasive products. In case of accidental spills of substances or liquids, immediately dab the wood with paper towel or with a dry and clean cloth. Avoid proximity to heat sources. Evenly expose the veneered woods to light, for example by periodically opening the table extensions that are stored inside the structure, or by moving any object placed on the surface, such as vases and accessories.

These tips are cleaning recommendations and do not guarantee complete stain removal.

We recommend that you always test the cleaning method on a hidden part of the item to check the resistance of the color.

Colour samples are to be considered approximate for each product. Slight color differences between a lot and the other are to be considered normal.

Materials Certifications

Veneered flamed walnut

Veneered woods are the result of a process of gluing extremely thin sheets of wood applied to various types of supports to produce furnishing elements, which have a similar appearance to solid wood, but with better performance in terms of resistance to woodworms, lightness and greater stability over time. If exposed to light, and in any case with the passage of time, the color of the veneer changes. It may happen that furniture of the same color purchased after some time, show color differences. Upon request, the veneered parts can be supplied with certified origin from forests managed in a correct and responsible manner, according to the rigorous environmental standards established by the FSC circuit.

CLEANING AND MAINTENANCE

For ordinary cleaning of veneered woods, use a cloth moistened with neutral soap well diluted in water or specific products. Always dry after each application with a dry cloth or paper towel. Do not use abrasive products. In case of accidental spills of substances or liquids, immediately dab the wood with paper towel



Ola S M TS Chair

design Paolo Vernier, 2016

Ola chair with four leg frame in lacquered metal. Shell upholstered with leather, faux leather or fabric.

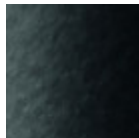
The Ola chair is stackable up to four units.

Colors and Materials

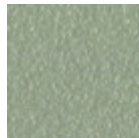
Structure



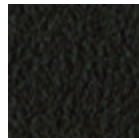
White steel



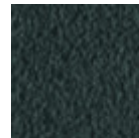
Black steel



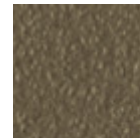
Sand steel



Brown steel



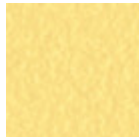
Grafite metal



Fango steel



Bronze metal



Pastel yellow steel



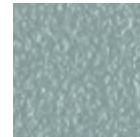
Ocher steel



Red steel



Sage green metal



Light blue metal



Ocean blue steel

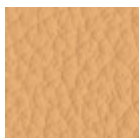


Facepowder pink metal

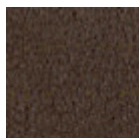


Light grey steel

Coating



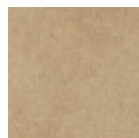
Fiore leather
21 Colors



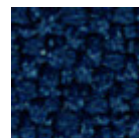
Vintage leather
8 Colors



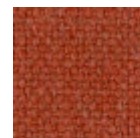
Secret faux leather
23 Colors



Vintage faux leather
12 Colors



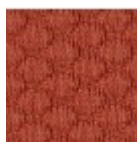
Mirage fabric
15 Colors



Cotton Club fabric
14 Colors



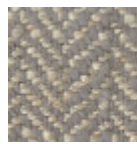
Fenix Wool fabric
16 Colors



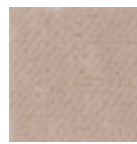
Visual fabric
13 Colors



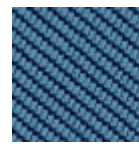
Main Line Flax fabric
16 Colors



Second fabric
11 Colors



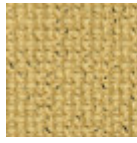
Velvet Superb
15 Colors



Tessuto Oceanic
13 Colors

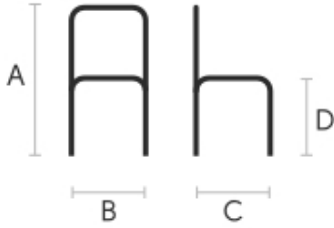


Manhattan fabric
13 Colors



Yoredale fabric
14 Colors

Dimensions



	cm	inch
A	82	32.3
B	49	19.3
C	54	21.3
D	45	17.7

Volumetric Details

Weight 14 Kg
Volume 0.31 mc
Package 1

Certifications



Downloads

- [Ola catalog \(pdf\)](https://www.midj.com/images/uploads/resources/Midj_2016_catalogo_Ola.pdf) - https://www.midj.com/images/uploads/resources/Midj_2016_catalogo_Ola.pdf
- [.3ds Ola S M TS \(zip\)](https://www.midj.com/images/uploads/resources/3d-midj-ola-s-m-ts-3ds.zip) - <https://www.midj.com/images/uploads/resources/3d-midj-ola-s-m-ts-3ds.zip>
- [.dae Ola S M TS \(zip\)](https://www.midj.com/images/uploads/resources/3d-midj-ola-s-m-ts-dae.zip) - <https://www.midj.com/images/uploads/resources/3d-midj-ola-s-m-ts-dae.zip>
- [.dwg Ola S M TS \(zip\)](https://www.midj.com/images/uploads/resources/3d-midj-ola-s-m-ts-dwg.zip) - <https://www.midj.com/images/uploads/resources/3d-midj-ola-s-m-ts-dwg.zip>
- [.dxf Ola S M TS \(zip\)](https://www.midj.com/images/uploads/resources/3d-midj-ola-s-m-ts-dxf.zip) - <https://www.midj.com/images/uploads/resources/3d-midj-ola-s-m-ts-dxf.zip>
- [.obj Ola S M TS \(zip\)](https://www.midj.com/images/uploads/resources/3d-midj-ola-s-m-ts-obj.zip) - <https://www.midj.com/images/uploads/resources/3d-midj-ola-s-m-ts-obj.zip>

Materials Certifications

Fiore leather

COMPOSITION: 100% leather

FIRE RESISTANCE:
CAL TB-117 (2013, Sec. 1)
BS 5852:1979
BS EN 1021-1-2:2006

Fiore leather is a natural product and this is why it can show signs such as wrinkles, veining and scars that indicate the animal origin of the product. These signs, together with slightly color differences, are distinctive elements that enhance its beauty and distinguish it from faux leather or other artificial products. Fiore

is a bovine leather from animals of European origin, finished with water-based dyeing with resins and pigments. Fiore leather has the ability of improving with time and use, both in softness and shine.

Dust the leather product regularly with a soft and dry cloth. In case of stains, rub the affected area with a soft and clean cloth, moistened with water or to use a light solution of water and mild soap, to be applied gently with a wet cloth. Move the cloth in a circular direction, starting from edges of the stain towards the center. Rinse well with a damp cloth. Dry immediately after treatment. Avoid direct sunlight and exposure to heat sources.

We recommend that you always test the cleaning method on a hidden part of the item to check the resistance of the color.