



Ola CT 105 Coffee Table

design Paolo Vernier, 2016

Ola coffee table with legs and top in lacquered metal or with industrial effect.

Suitable for outdoor use.



Colors and Materials

Structure



White steel



Black steel



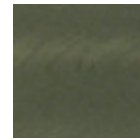
Sand steel



Brown steel



Grafite metal



Industrial steel

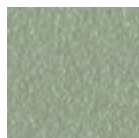
Coating



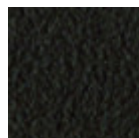
White steel



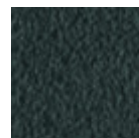
Black steel



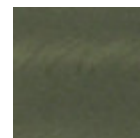
Sand steel



Brown steel

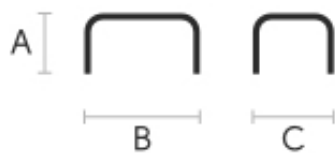


Grafite metal



Industrial steel

Dimensions



	A (cm)	B (cm)	C (cm)
	(inch)	(inch)	(inch)
Ola CT	50	105	44
105 (cm)	19.7	41.3	17.3
	(inch)		

	A (cm)	B (cm)	C (cm)
	(inch)	(inch)	(inch)
Ola CT 45	50	45	44
(cm)	19.7	17.7	17.3
(inch)			

Volumetric Details

Weight 10 Kg

Volume 0.24 mc

Package 1

Downloads

[.3ds Ola CT 105 \(zip\)](https://www.midj.com/images/uploads/resources/3d-midj-ola-ct-105-3ds.zip) - <https://www.midj.com/images/uploads/resources/3d-midj-ola-ct-105-3ds.zip>



Ola CT 45 Coffee Table

design Paolo Vernier, 2016

Ola coffee table with legs and top in lacquered metal or with industrial effect.

Suitable for outdoor use.



Colors and Materials

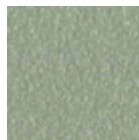
Structure



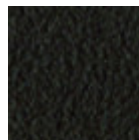
White steel



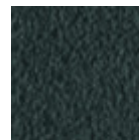
Black steel



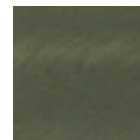
Sand steel



Brown steel

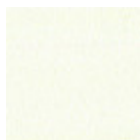


Grafite metal

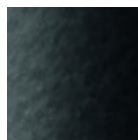


Industrial steel

Coating



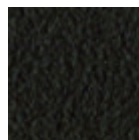
White steel



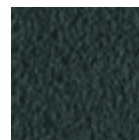
Black steel



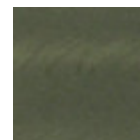
Sand steel



Brown steel

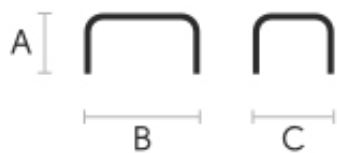


Grafite metal



Industrial steel

Dimensions



	A (cm)	B (cm)	C (cm)
	(inch)	(inch)	(inch)
Ola CT 45	45	45	47
(cm)	17.7	17.7	18.5
(inch)			

	A (cm)	B (cm)	C (cm)
	(inch)	(inch)	(inch)
Ola CT	50	105	44
105 (cm)	19.7	41.3	17.3
(inch)			

Volumetric Details

Weight 6 Kg

Volume 0.11 mc

Package 1