

MIDJ



P47 SG TS-CU Stool

design Franco Poli, 2021

High-adjustable stool with metal base. Backrest made of TK hide or tuscan hide, seat upholstered in hide, faux leather, fabric or customer's fabric.

When the P47 stool is part of the furniture, workspaces are enriched with style and elegance. It is functional, equipped with adjustable height and footrest, and versatile thanks to the monochrome base that allows original color combinations.

Colors and Materials

Structure



Papaya orange steel



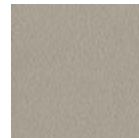
Light blue metal



White steel



Ocean blue steel



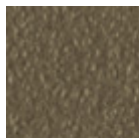
Ash grey metal



Bronze metal



Sand steel



Fango steel



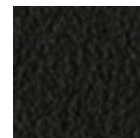
Golden yellow metal



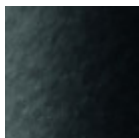
Pastel yellow steel



Light grey steel



Brown steel



Black steel



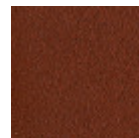
Ocher steel



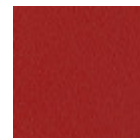
Facepowder pink metal



Red steel



Bulgaro red metal



Cherry red metal



Sage green metal



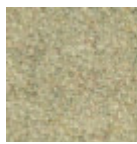
Pine green steel

Coating



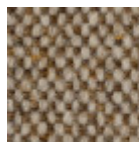
Cotton Club fabric

14 Colors



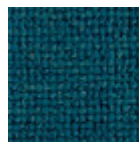
Fenix Wool fabric

16 Colors



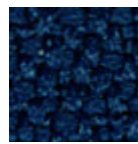
Main Line Flax fabric

16 Colors



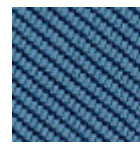
Manhattan fabric

13 Colors



Mirage fabric

15 Colors



Tessuto Oceanic

13 Colors



Second fabric

11 Colors



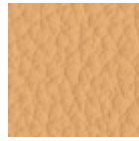
Visual fabric

13 Colors



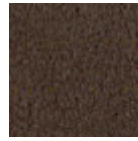
Yoredale fabric

14 Colors



Fiore leather

21 Colors



Vintage leather

8 Colors



Secret faux leather

23 Colors



Vintage faux leather

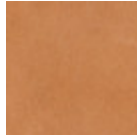
12 Colors

Extensions



TK Hide

13 Colors



Tuscan hide

6 Colors

Dimensions



	cm	inch
A	86/100	33.9/39.4
B	58	22.8
C	46	18.1
D	64/78	25.2/30.7
E	78/92	30.7/36.2

Materials Certifications

Cotton Club fabric

COMPOSITION: 70 % COT; 10% PES; 10% ACR; 10% AF
Abrasion resistance (Martindale) 100.000 cycles

Cotton Club by Flukso is a fabric made from latest generation regenerated cotton yarns. To create this fabric, specific fixing techniques were used, that give it and help maintaining a natural, slightly wavy and vibrated look.

CLEANING AND MAINTENANCE

Regular cleaning is important to extend the life of the coating, and keep its appearance unchanged. Dust and dirt can wear out the coating.

REGULAR CLEANING: vacuum frequently, at least once a week, at a power equal to half the device in use, choosing a smooth spout, without brushing.

STAIN REMOVAL: in case of slight stains, promptly clean the surface. Remove excess liquids or hard

MIDJ

P47 H65 M TS-CU Stool

design Franco Poli, 2021

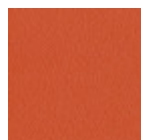


Stool with metal cantilever base, height 65 cm/25.6 inch. Backrest made of TK hide or tuscan hide, seat upholstered in hide, faux leather, fabric or customer's fabric.

With the P47 stool, style reaches new heights. The wraparound structure, characterized by the back in continuous harmony with the seat, combines comfort and aesthetics. The two available heights meet the different needs of contemporary living.

Colors and Materials

Structure



Papaya orange steel



Light blue metal



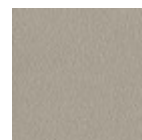
White steel



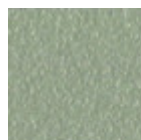
Ocean blue steel



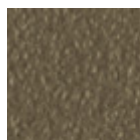
Bronze metal



Ash grey metal



Sand steel



Fango steel



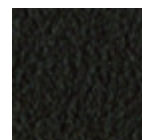
Golden yellow metal



Pastel yellow steel



Light grey steel



Brown steel



Black steel



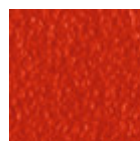
Ocher steel



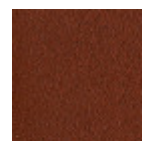
Golden champagne



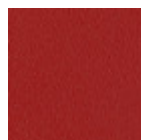
Facepowder pink metal



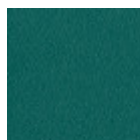
Red steel



Bulgaro red metal



Cherry red metal



Pine green steel



Sage green metal



Black Nickel



Pink Gold



Golden bronze

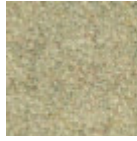


Chrome

Coating



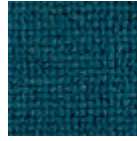
Cotton Club fabric
14 Colors



Fenix Wool fabric
16 Colors



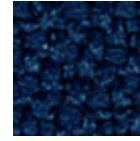
Main Line Flax fabric
16 Colors



Manhattan fabric
13 Colors



Tessuto Oceanic
13 Colors



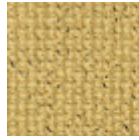
Mirage fabric
15 Colors



Second fabric
11 Colors



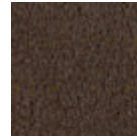
Visual fabric
13 Colors



Yoredale fabric
14 Colors



Fiore leather
21 Colors



Vintage leather
8 Colors



Secret faux leather
23 Colors



Vintage faux leather
12 Colors

Extensions



Tuscan hide
6 Colors



TK Hide
13 Colors

Dimensions



	cm	inch
A	84	33.1
B	58	22.8
C	49	19.3
D	65	25.6

Materials Certifications

Cotton Club fabric

COMPOSITION: 70 % COT; 10% PES; 10% ACR; 10% AF
Abrasion resistance (Martindale) 100.000 cycles

Cotton Club by Flukso is a fabric made from latest generation regenerated cotton yarns. To create this fabric, specific fixing techniques were used, that give it and help maintaining a natural, slightly wavy and

MIDJ



P47 H75 M TS-CU Stool

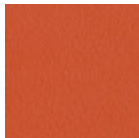
design Franco Poli, 2021

Stool with metal cantilever base, height 75 cm/29.5 inch. Backrest made of TK hide or tuscan hide, seat upholstered in hide, faux leather, fabric or customer's fabric.

With the P47 stool, style reaches new heights. The wraparound structure, characterized by the back in continuous harmony with the seat, combines comfort and aesthetics. The two available heights meet the different needs of contemporary living.

Colors and Materials

Structure



Papaya orange steel



Light blue metal



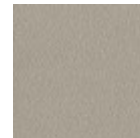
White steel



Ocean blue steel



Bronze metal



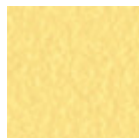
Ash grey metal



Sand steel



Golden yellow metal



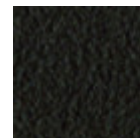
Pastel yellow steel



Fango steel



Light grey steel



Brown steel



Black steel



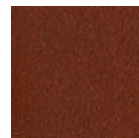
Ocher steel



Golden champagne



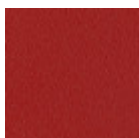
Facepowder pink metal



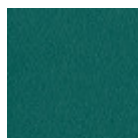
Bulgaro red metal



Red steel



Cherry red metal



Pine green steel



Sage green metal



Black Nickel



Pink Gold



Golden bronze

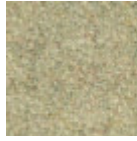


Chrome

Coating



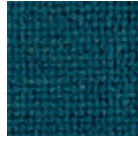
Cotton Club fabric
14 Colors



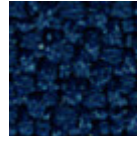
Fenix Wool fabric
16 Colors



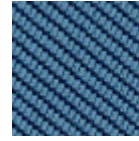
Main Line Flax fabric
16 Colors



Manhattan fabric
13 Colors



Mirage fabric
15 Colors



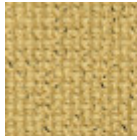
Tessuto Oceanic
13 Colors



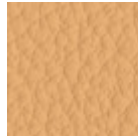
Second fabric
11 Colors



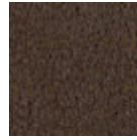
Visual fabric
13 Colors



Yoredale fabric
14 Colors



Fiore leather
21 Colors



Vintage leather
8 Colors



Secret faux leather
23 Colors

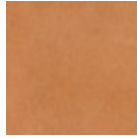


Vintage faux leather
12 Colors

Extensions



TK Hide
13 Colors



Tuscan hide
6 Colors

Dimensions



	cm	inch
A	94	37
B	58	22.8
C	49	19.3
D	75	29.5

Materials Certifications

Cotton Club fabric

COMPOSITION: 70 % COT; 10% PES; 10% ACR; 10% AF
Abrasion resistance (Martindale) 100.000 cycles

Cotton Club by Flukso is a fabric made from latest generation regenerated cotton yarns. To create this fabric, specific fixing techniques were used, that give it and help maintaining a natural, slightly wavy and