



P47 P GX TS-CU

Armchair

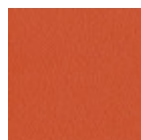
design Franco Poli, 2021

Swivel armchair with trestle base in steel. Backrest made of TK hide or tuscan hide, seat upholstered in hide, faux leather, fabric or customer's fabric.

The P47 executive chair accentuates the elegance of professional and home-office spaces. The leather base is extraordinarily fresh and resistant and, combined with the backrest, ensures the right posture for an ergonomic armchair with an intelligent design.

Colors and Materials

Structure



Papaya orange steel



Light blue metal



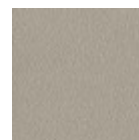
White steel



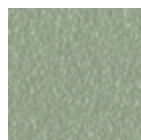
Ocean blue steel



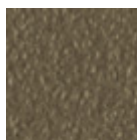
Bronze metal



Ash grey metal



Sand steel



Fango steel



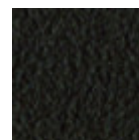
Golden yellow metal



Pastel yellow steel



Light grey steel



Brown steel



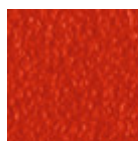
Black steel



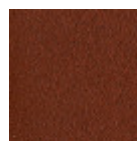
Ocher steel



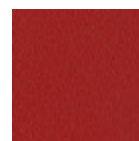
Facepowder pink metal



Red steel



Bulgaro red metal



Cherry red metal



Pine green steel



Sage green metal

Coating



Fenix Wool fabric
16 Colors



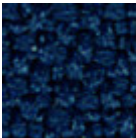
Cotton Club fabric
14 Colors



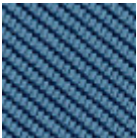
Main Line Flax fabric
16 Colors



Manhattan fabric
13 Colors



Mirage fabric
15 Colors



Tessuto Oceanic
13 Colors



Second fabric
11 Colors



Visual fabric
13 Colors



Yoredale fabric
14 Colors



Fiore leather
21 Colors



Vintage leather
8 Colors



Vintage faux leather
12 Colors



Secret faux leather
23 Colors

Extensions

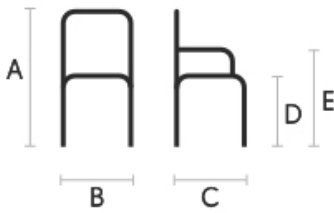


TK Hide
13 Colors



Tuscan hide
6 Colors

Dimensions



	cm	inch
A	77	30.3
B	66	26
C	56	22
D	46	18.1
E	70	27.6

Materials Certifications

Fenix Wool fabric

COMPOSITION: 75% WO, 25% PA
MARTINDALE: 100.000 cycles

FIRE RESISTANCE:
Classe 1IM
N 1021 Part 1-2
Calif. Bull. 117 June 2013

Fenix Wool is a wool fabric with a particular and warm finish, obtained thanks to a treatment that confers softness to the touch and, at the same time, a good consistency, able to achieve excellent resistance to pilling and abrasion.

CLEANING AND MAINTENANCE
Regular cleaning is important to extend the life of the coating, and keep its appearance unchanged. Dust



P47 P M TS-CU Chair

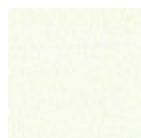
design Franco Poli, 2021

Chair with metal cantilever base. Backrest made of TK hide or tuscan hide, seat upholstered in hide, faux leather, fabric or customer's fabric.

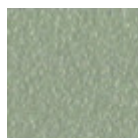
Of marked elegance, the P47 armchair extends its charm to the surrounding environment. Under the rays of the sun it gives life to a play of light and shadow, giving a scenographic effect of great impact.

Colors and Materials

Structure



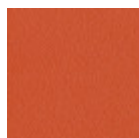
Metallo bianco



Metallo corda



Metallo nero



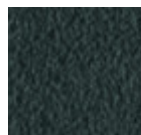
Metallo arancio
papaya



Metallo azzurro



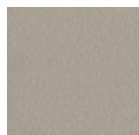
Metallo blu oceano



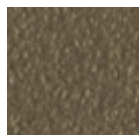
Metallo grafite



Metallo Bronzo



Metallo grigio cenere



Metallo fango



Metallo giallo oro



Metallo giallo
pastello



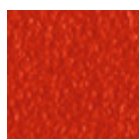
Metallo grigio chiaro



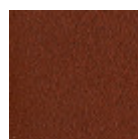
Metallo ocra



Metallo rosa cipria



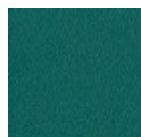
Metallo rosso



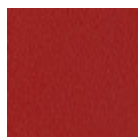
Metallo rosso
bulgaro



Metallo verde salvia



Metallo verde pino



Metallo rosso
ciliegia



Chrome

Coating



Tessuto Cotton Club
14 Colors



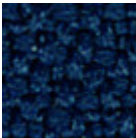
Tessuto Fenix Wool
16 Colors



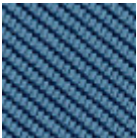
Tessuto Main Line Flax
16 Colors



Tessuto manhattan
13 Colors



Tessuto Mirage
15 Colors



Tessuto Oceanic
13 Colors



Tessuto Second
11 Colors



Tessuto Visual
13 Colors



Tessuto Yoredale
14 Colors



Pelle fiore
21 Colors



Pelle Vintage
8 Colors



Similpelle Secret
23 Colors

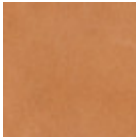


Similpelle Vintage
12 Colors

Extensions

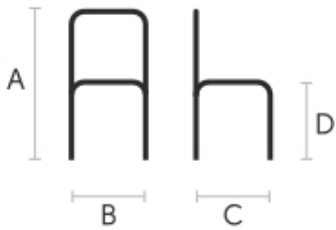


Cuoio TK
13 Colors



Cuoio toscano
6 Colors

Dimensions



	cm	inch
A	77	30.3
B	66	26
C	56	22
D	46	18.1
E	70	27.6

Materials Certifications

Tessuto Cotton Club

COMPOSIZIONE: 70 % COT; 10% PES; 10% ACR; 10% AF

Resistenza all'abrasione: 100.000 cicli

Cotton Club è il tessuto di Flukso® realizzato utilizzando filati di cotone rigenerato di ultima generazione. Per realizzare questo tessuto sono state utilizzate specifiche tecniche di fissaggio che ne conferiscono e contribuiscono a mantenere un aspetto naturale, leggermente mosso e vibrato.

PULIZIA E MANUTENZIONE

Una pulizia regolare è importante per prolungare la durata del rivestimento e mantenerne inalterato l'aspetto. Polvere e sporcizia possono usurare il rivestimento.



P47 DP TS-CU Armchair

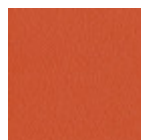
design Franco Poli, 2021

Swivel height adjustable armchair with five ways base in steel on wheels. Backrest made of TK hide or tuscan hide, seat upholstered in hide, faux leather, fabric or customer's fabric.

The P47 executive chair accentuates the elegance of professional and home-office spaces. The leather base is extraordinarily fresh and resistant and, combined with the backrest, ensures the right posture for an ergonomic armchair with an intelligent design.

Colors and Materials

Structure



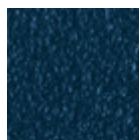
Papaya orange steel



White steel



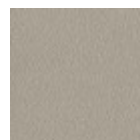
Light blue metal



Ocean blue steel



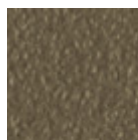
Bronze metal



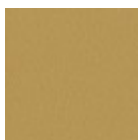
Ash grey metal



Sand steel



Fango steel



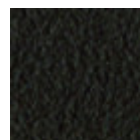
Golden yellow metal



Pastel yellow steel



Light grey steel



Brown steel



Black steel



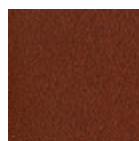
Ocher steel



Facepowder pink metal



Red steel



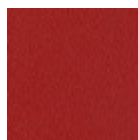
Bulgaro red metal



Sage green metal



Pine green steel



Cherry red metal

Coating



Cotton Club fabric
14 Colors



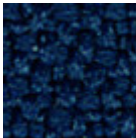
Fenix Wool fabric
16 Colors



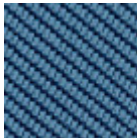
Main Line Flax fabric
16 Colors



Manhattan fabric
13 Colors



Mirage fabric
15 Colors



Tessuto Oceanic
13 Colors



Second fabric
11 Colors



Yoredale fabric
14 Colors



Visual fabric
13 Colors



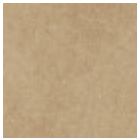
Fiore leather
21 Colors



Vintage leather
8 Colors



Secret faux leather
23 Colors

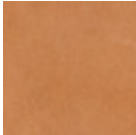


Vintage faux leather
12 Colors

Extensions



TK Hide
13 Colors



Tuscan hide
6 Colors

Dimensions



	cm	inch
A	74/83	29.1/32.7
B	66	26
C	66	26
D	46/53	18.1/20.9
E	67/75	26.4/29.5

Materials Certifications

Cotton Club fabric

COMPOSITION: 70 % COT; 10% PES; 10% ACR; 10% AF
Abrasion resistance (Martindale) 100.000 cycles

Cotton Club by Flukso is a fabric made from latest generation regenerated cotton yarns. To create this fabric, specific fixing techniques were used, that give it and help maintaining a natural, slightly wavy and vibrated look.

CLEANING AND MAINTENANCE

Regular cleaning is important to extend the life of the coating, and keep its appearance unchanged. Dust and dirt can wear out the coating.

REGULAR CLEANING: vacuum frequently, at least once a week, at a power equal to half the device in use, choosing a smooth spout, without brushing.

STAIN REMOVAL: in case of slight stains, promptly clean the surface. Remove excess liquids or hard parts of dirt with a clean cloth, then proceed on the residue



P47 DPA TS-CU Armchair

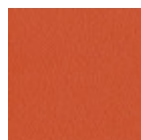
design Franco Poli, 2021

Swivel height adjustable armchair with five ways base in steel on wheels. Backrest made of TK hide or tuscan hide, seat upholstered in hide, faux leather, fabric or customer's fabric.

The P47 executive chair accentuates the elegance of professional and home-office spaces. The leather base is extraordinarily fresh and resistant and, combined with the backrest, ensures the right posture for an ergonomic armchair with an intelligent design.

Colors and Materials

Structure



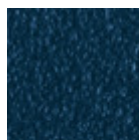
Papaya orange steel



Light blue metal



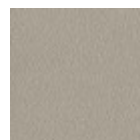
White steel



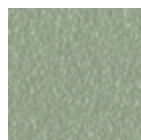
Ocean blue steel



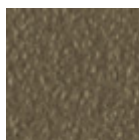
Bronze metal



Ash grey metal



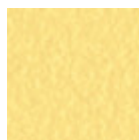
Sand steel



Fango steel



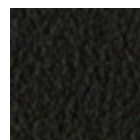
Golden yellow metal



Pastel yellow steel



Light grey steel



Brown steel



Black steel



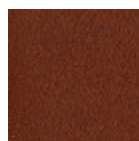
Ocher steel



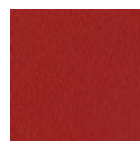
Facepowder pink metal



Red steel



Bulgaro red metal



Cherry red metal



Pine green steel



Sage green metal

Coating



Cotton Club fabric
14 Colors



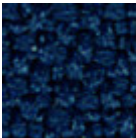
Fenix Wool fabric
16 Colors



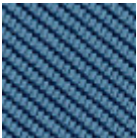
Main Line Flax fabric
16 Colors



Manhattan fabric
13 Colors



Mirage fabric
15 Colors



Tessuto Oceanic
13 Colors



Second fabric
11 Colors



Visual fabric
13 Colors



Yoredale fabric
14 Colors



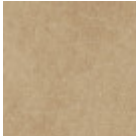
Fiore leather
21 Colors



Vintage leather
8 Colors



Secret faux leather
23 Colors



Vintage faux leather
12 Colors

Extensions

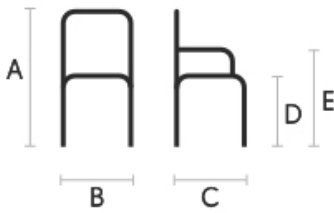


TK Hide
13 Colors



Tuscan hide
6 Colors

Dimensions



	cm	inch
A	99/111	39/43.7
B	66	26
C	70	27.6
D	46/59	18.1/23.2
E	67/80	26.4/31.5

Materials Certifications

Cotton Club fabric

COMPOSITION: 70 % COT; 10% PES; 10% ACR; 10% AF
Abrasion resistance (Martindale) 100.000 cycles

Cotton Club by Flukso is a fabric made from latest generation regenerated cotton yarns. To create this fabric, specific fixing techniques were used, that give it and help maintaining a natural, slightly wavy and vibrated look.

CLEANING AND MAINTENANCE

Regular cleaning is important to extend the life of the coating, and keep its appearance unchanged. Dust and dirt can wear out the coating.

REGULAR CLEANING: vacuum frequently, at least once a week, at a power equal to half the device in use, choosing a smooth spout, without brushing.

STAIN REMOVAL: in case of slight stains, promptly clean the surface. Remove excess liquids or hard parts of dirt with a clean cloth, then proceed on the residue