



# P47 APA GX TS-CU Lounge Chair

design Franco Poli, 2021

Swivel lounge armchair with trestle base in steel with reclining backrest. Backrest made of TK hide or tuscan hide, seat upholstered in hide, faux leather, fabric or customer's fabric.

A charming piece of furniture, synonymous with comfort and relax, the P47 lounge creates a relaxed and snug atmosphere. The reclining backrest and the matching footstool accompany relaxation for a pleasant moment of well-being.

## Colors and Materials

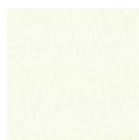
### Structure



Papaya orange steel



Light blue metal



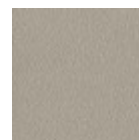
White steel



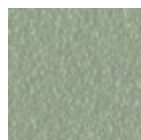
Ocean blue steel



Bronze metal



Ash grey metal



Sand steel



Fango steel



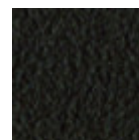
Golden yellow metal



Pastel yellow steel



Light grey steel



Brown steel



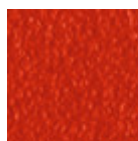
Black steel



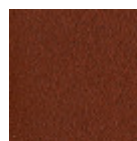
Ocher steel



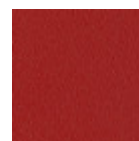
Facepowder pink  
metal



Red steel



Bulgaro red metal



Cherry red metal



Pine green steel



Sage green metal

### Coating



Cotton Club fabric  
14 Colors



Fenix Wool fabric  
16 Colors



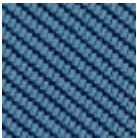
Main Line Flax fabric  
16 Colors



Manhattan fabric  
13 Colors



Mirage fabric  
15 Colors



Tessuto Oceanic  
13 Colors



Second fabric  
11 Colors



Visual fabric  
13 Colors



Yoredale fabric  
14 Colors



Fiore leather  
21 Colors



Vintage leather  
8 Colors



Vintage faux leather  
12 Colors



Secret faux leather  
23 Colors

Extensions



TK Hide  
13 Colors



Tuscan hide  
6 Colors

Dimensions



	cm	inch
A	98	38.6
B	80	31.5
C	70	27.6
D	43	16.9
E	67	26.4

Materials Certifications

Cotton Club fabric

COMPOSITION: 70 % COT; 10% PES; 10% ACR; 10% AF  
Abrasion resistance (Martindale) 100.000 cycles

Cotton Club by Flukso is a fabric made from latest generation regenerated cotton yarns. To create this fabric, specific fixing techniques were used, that give it and help maintaining a natural, slightly wavy and vibrated look.

CLEANING AND MAINTENANCE

Regular cleaning is important to extend the life of the coating, and keep its appearance unchanged. Dust and dirt can wear out the coating.

REGULAR CLEANING: vacuum frequently, at least once a week, at a power equal to half the device in use, choosing a smooth spout, without brushing.

STAIN REMOVAL: in case of slight stains, promptly clean the surface. Remove excess liquids or hard parts of dirt with a clean cloth, then proceed on the residue



# P47 AP GX TS-CU Lounge Chair

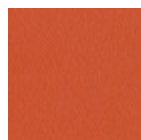
design Franco Poli, 2021

Swivel lounge armchair with trestle base in steel. Backrest made of TK hide or tuscan hide, seat upholstered in hide, faux leather, fabric or customer's fabric.

The P47 executive chair accentuates the elegance of professional and home-office spaces. The leather base is extraordinarily fresh and resistant and, combined with the backrest, ensures the right posture for an ergonomic armchair with an intelligent design.

## Colors and Materials

### Structure



Papaya orange steel



Light blue metal



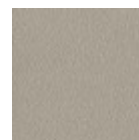
White steel



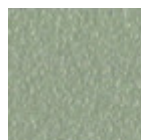
Ocean blue steel



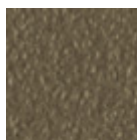
Bronze metal



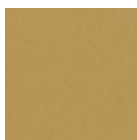
Ash grey metal



Sand steel



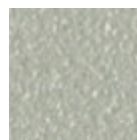
Fango steel



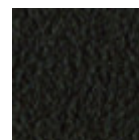
Golden yellow metal



Pastel yellow steel



Light grey steel



Brown steel



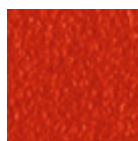
Black steel



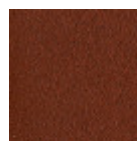
Ocher steel



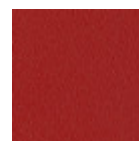
Facepowder pink  
metal



Red steel



Bulgaro red metal



Cherry red metal



Pine green steel



Sage green metal

### Coating



Cotton Club fabric  
14 Colors



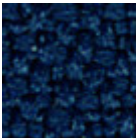
Fenix Wool fabric  
16 Colors



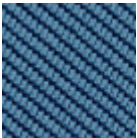
Main Line Flax fabric  
16 Colors



Manhattan fabric  
13 Colors



Mirage fabric  
15 Colors



Tessuto Oceanic  
13 Colors



Second fabric  
11 Colors



Visual fabric  
13 Colors



Yoredale fabric  
14 Colors



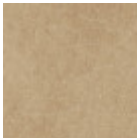
Fiore leather  
21 Colors



Vintage leather  
8 Colors



Secret faux leather  
23 Colors



Vintage faux leather  
12 Colors

### Extensions

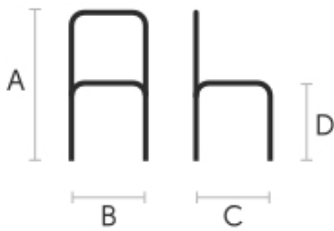


TK Hide  
13 Colors



Tuscan hide  
6 Colors

### Dimensions



	cm	inch
A	79	31.1
B	80	31.5
C	66	26
D	43	16.9
E	67	26.4

### Materials Certifications

#### Cotton Club fabric

COMPOSITION: 70 % COT; 10% PES; 10% ACR; 10% AF  
Abrasion resistance (Martindale) 100.000 cycles

Cotton Club by Flukso is a fabric made from latest generation regenerated cotton yarns. To create this fabric, specific fixing techniques were used, that give it and help maintaining a natural, slightly wavy and vibrated look.

#### CLEANING AND MAINTENANCE

Regular cleaning is important to extend the life of the coating, and keep its appearance unchanged. Dust and dirt can wear out the coating.

REGULAR CLEANING: vacuum frequently, at least once a week, at a power equal to half the device in use, choosing a smooth spout, without brushing.

STAIN REMOVAL: in case of slight stains, promptly clean the surface. Remove excess liquids or hard parts of dirt with a clean cloth, then proceed on the residue



## P47 AP M TS-CU Lounge Chair

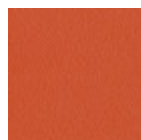
design Franco Poli, 2021

Lounge with metal cantilever base. Backrest made of TK hide or tuscan hide, seat upholstered in hide, faux leather, fabric or customer's fabric.

With its innovative design, which makes leather an element of strong personality, P47 is the promise of a pleasant break. The natural elasticity of the material gives maximum comfort for a moment of relaxation, at home or in an elegant lounge area.

### Colors and Materials

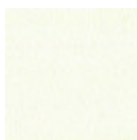
#### Structure



Papaya orange steel



Light blue metal



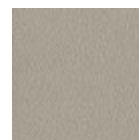
White steel



Ocean blue steel



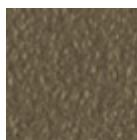
Bronze metal



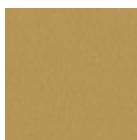
Ash grey metal



Sand steel



Fango steel



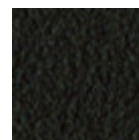
Golden yellow metal



Pastel yellow steel



Light grey steel



Brown steel



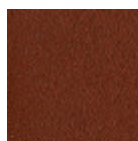
Black steel



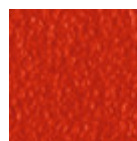
Ocher steel



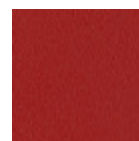
Facepowder pink metal



Bulgaro red metal



Red steel



Cherry red metal



Pine green steel

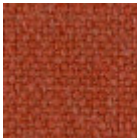


Sage green metal



Chrome

#### Coating



Cotton Club fabric  
14 Colors



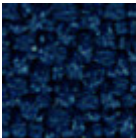
Fenix Wool fabric  
16 Colors



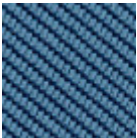
Main Line Flax fabric  
16 Colors



Manhattan fabric  
13 Colors



Mirage fabric  
15 Colors



Tessuto Oceanic  
13 Colors



Second fabric  
11 Colors



Visual fabric  
13 Colors



Yoredale fabric  
14 Colors



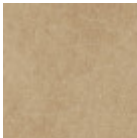
Fiore leather  
21 Colors



Vintage leather  
8 Colors



Secret faux leather  
23 Colors

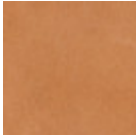


Vintage faux leather  
12 Colors

Extensions

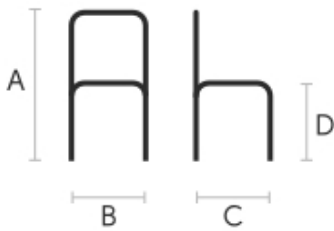


TK Hide  
13 Colors



Tuscan hide  
6 Colors

Dimensions



	cm	inch
A	79	31.1
B	80	31.5
C	66	26
D	43	16.9
E	67	26.4

Materials Certifications

Cotton Club fabric

COMPOSITION: 70 % COT; 10% PES; 10% ACR; 10% AF  
Abrasion resistance (Martindale) 100.000 cycles

Cotton Club by Flukso is a fabric made from latest generation regenerated cotton yarns. To create this fabric, specific fixing techniques were used, that give it and help maintaining a natural, slightly wavy and vibrated look.

CLEANING AND MAINTENANCE

Regular cleaning is important to extend the life of the coating, and keep its appearance unchanged. Dust and dirt can wear out the coating.

REGULAR CLEANING: vacuum frequently, at least once a week, at a power equal to half the device in use, choosing a smooth spout, without brushing.

STAIN REMOVAL: in case of slight stains, promptly clean the surface. Remove excess liquids or hard parts of dirt with a clean cloth, then proceed on the residue