



Paul round Extendable Table

Paul round and extendable table with metal base.

Wooden or crystalceramic top, and matching extensions.

Colors and Materials

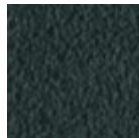
Structure



White steel



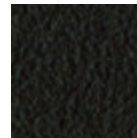
Sand steel



Grafite metal

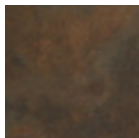


Black steel

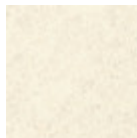


Brown steel

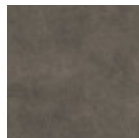
Coating



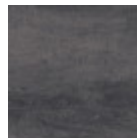
Corten crystalceramic



Oxide white crystalceramic



Lead crystalceramic



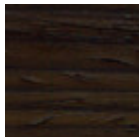
Charcoal savoia crystalceramic



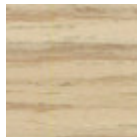
Cement savoia crystalceramic



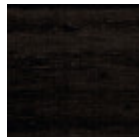
Veneered flamed walnut



Veneered ash dark oak

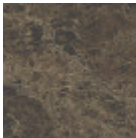


Veneered ash natural finish

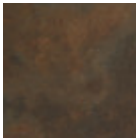


Black lacquered veneered ash

Extensions



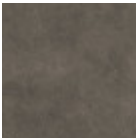
Matt emperador
marble
crystalceramic



Corten
crystalceramic



Oxide white
crystalceramic



Lead crystalceramic



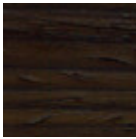
Charcoal savoia
crystalceramic



Cement savoia
crystalceramic



Veneered flamed
walnut



Veneered ash dark
oak

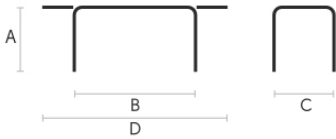


Veneered ash
natural finish



Black lacquered
veneered ash

Dimensions



	cm	inch
A	75	29.5
B	120	47.2
C	120	47.2
D	180	70.9

Materials Certifications

Corten crystalceramic

Crystalceramic combines elegance and resistance. Crystalceramic tops are composed of two sheets joined together: the lower layer is made of tempered glass, the upper layer of ceramic (porcelain stoneware).

Once joined together, the sheets give life to an extremely resistant top, suitable for placement in highly used environments. The properties that the crystalceramic tops include are high water repellency, heat resistance, scratch resistance and high durability.

CLEANING AND MAINTENANCE

For daily cleaning we recommend using a microfiber cloth, moistened with hot water and possibly neutral detergents, making sure to rinse them in case of use. Do not use abrasive scourers or cleaners. To remove any dried residues deposited on the surface, proceed with the use of a wooden or plastic scraper. Some types of stains, if not promptly removed, could leave a more or less visible permanent ring. In case of contact with acidic liquids (such as pure lemon juice) or highly pigmented liquids (such as red wine, coffee, Coke) remove promptly and rinse with a damp and clean cloth. The persistence of the stain over time hinders its complete removal. It is possible to use bleach to remove the most stubborn stains: with a damp cloth rub the surface for a few seconds. Most of the stains will no longer be visible within 2-3 minutes of application, then rinse with water and dry.

These tips are cleaning recommendations and do not guarantee complete stain removal.

We recommend that you always test the cleaning method on a hidden part of the item to check the resistance of the material.

Colour samples are to be considered approximate for each product. Slight color differences between a lot and the other are to be considered normal.

Materials Certifications

Lead crystalceramic

Crystalceramic combines elegance and resistance. Crystalceramic tops are composed of two sheets joined together: the lower layer is made of tempered glass, the upper layer of ceramic (porcelain stoneware).

Once joined together, the sheets give life to an extremely resistant top, suitable for placement in highly



Paul botte Extendable Table

Paul extendable table with metal base.

Wooden or crystalceramic top, with matching extensions.

Colors and Materials

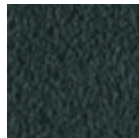
Structure



White steel



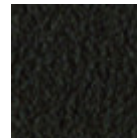
Sand steel



Grafite metal

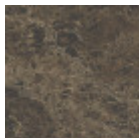


Black steel

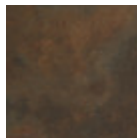


Brown steel

Coating



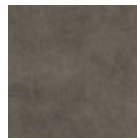
Matt emperador
marble
crystalceramic



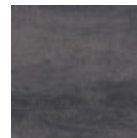
Corten
crystalceramic



Oxide white
crystalceramic



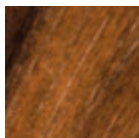
Lead crystalceramic



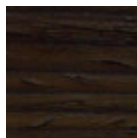
Charcoal savoia
crystalceramic



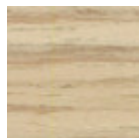
Cement savoia
crystalceramic



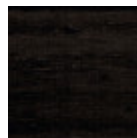
Veneered flamed
walnut



Veneered ash dark
oak

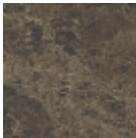


Veneered ash
natural finish

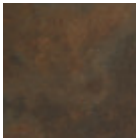


Black lacquered
veneered ash

Extensions



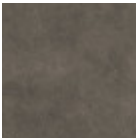
Matt emperador
marble
crystalceramic



Corten
crystalceramic



Oxide white
crystalceramic



Lead crystalceramic



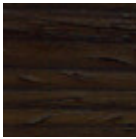
Charcoal savoia
crystalceramic



Cement savoia
crystalceramic



Veneered flamed
walnut



Veneered ash dark
oak

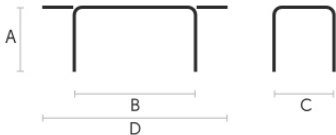


Veneered ash
natural finish



Black lacquered
veneered ash

Dimensions



	cm	inch
A	75	29.5
B	120	47.2
C	120	47.2
D	180	70.9

Materials Certifications

Matt emperador marble crystalceramic

Crystalceramic combines elegance and resistance. Crystalceramic tops are composed of two sheets joined together: the lower layer is made of tempered glass, the upper layer of ceramic (porcelain stoneware). Once joined together, the sheets give life to an extremely resistant top, suitable for placement in highly used environments. The properties that the crystalceramic tops include are high water repellency, heat resistance, scratch resistance and high durability.

CLEANING AND MAINTENANCE

For daily cleaning we recommend using a microfiber cloth, moistened with hot water and possibly neutral detergents, making sure to rinse them in case of use. Do not use abrasive scourers or cleaners. To remove any dried residues deposited on the surface, proceed with the use of a wooden or plastic scraper. Some types of stains, if not promptly removed, could leave a more or less visible permanent ring. In case of contact with acidic liquids (such as pure lemon juice) or highly pigmented liquids (such as red wine, coffee, Coke) remove promptly and rinse with a damp and clean cloth. The persistence of the stain over time hinders its complete removal. It is possible to use bleach to remove the most stubborn stains: with a damp cloth rub the surface for a few seconds. Most of the stains will no longer be visible within 2-3 minutes of application, then rinse with water and dry.

These tips are cleaning recommendations and do not guarantee complete stain removal.

We recommend that you always test the cleaning method on a hidden part of the item to check the resistance of the material.

Colour samples are to be considered approximate for each product. Slight color differences between a lot and the other are to be considered normal.

Materials Certifications

Corten crystalceramic

Crystalceramic combines elegance and resistance. Crystalceramic tops are composed of two sheets joined together: the lower layer is made of tempered glass, the upper layer of ceramic (porcelain stoneware). Once joined together, the sheets give life to an extremely resistant top, suitable for placement in highly used environments. The properties that the crystalceramic tops include are high water repellency,