



Piuma S M TS Chair

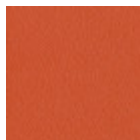
design Paolo Vernier, 2022

Chair with four-legs metal base. Seat and back in leather, faux leather or fabric with visible metal inserts matching with the structure. Wing nuts in black or red metal.

The Piuma collection includes the chair, armchair and stool versions with seat and back in wood, hide, leather, fabric or faux leather.

Colors and Materials

Structure



Papaya orange steel



Light blue metal



White steel



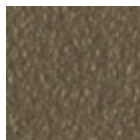
Ocean blue steel



Bronze metal



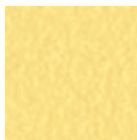
Sand steel



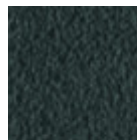
Fango steel



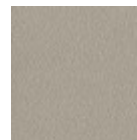
Golden yellow metal



Pastel yellow steel



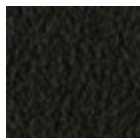
Grafite metal



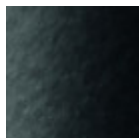
Ash grey metal



Light grey steel



Brown steel



Black steel



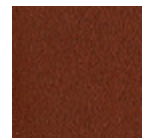
Ocher steel



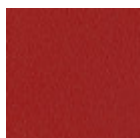
Facepowder pink metal



Red steel



Bulgaro red metal



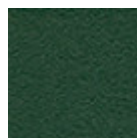
Cherry red metal



Pine green steel



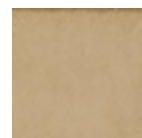
Sage green metal



Dark green metal



Golden bronze



Matt golden bronze



Black Nickel



Matt black nickel



Golden champagne



Pink Gold

Coating



Cotton Club fabric
14 Colors



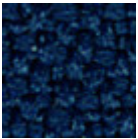
Fenix Wool fabric
16 Colors



Main Line Flax fabric
16 Colors



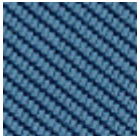
Manhattan fabric
13 Colors



Mirage fabric
15 Colors



Novabuk fabric
17 Colors



Tessuto Oceanic
13 Colors



Remix 3 fabric
19 Colors



Second fabric
11 Colors



Velvet Superb
15 Colors



Uniform Melange
Fabric
7 Colors



Visual fabric
13 Colors



Yoredale fabric
14 Colors



Secret faux leather
23 Colors



Vintage faux leather
12 Colors



Fiore leather
21 Colors



Vintage leather
8 Colors

Extensions

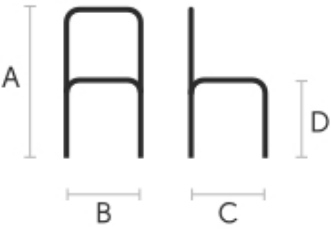


Black steel



Red steel

Dimensions



	cm	inch
A	75	29.5
B	41	16.1
C	50	19.7
D	45	17.7

Materials Certifications

Dark green metal

The technologies used in the previous phase of powder coating play a fundamental role in the final result of the processing. They are in fact essential to increase adherence paint on the metal surface and then guarantee its duration over time. The metal frames, following a total cleaning of the surface, pass through chemical conversion processes, creating a compact base that allows for better adhesion of the subsequent treatment. In the last phase the object subjected to the powder coating process is placed in a



Piuma P M CU Armchair

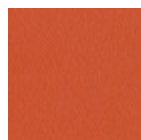
design Paolo Vernier, 2022

Armchair with four-legged metal base. Seat and back in hide or Tuscan hide with metal inserts in the same color as the structure. Wing nuts in black or red metal.

The Piuma collection includes the chair, armchair and stool versions with seat and back in wood, hide, leather, fabric or faux leather.

Colors and Materials

Structure



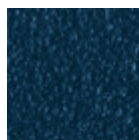
Papaya orange steel



Light blue metal



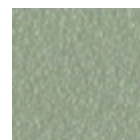
White steel



Ocean blue steel



Bronze metal



Sand steel



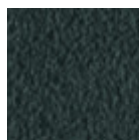
Fango steel



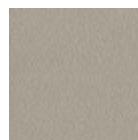
Golden yellow metal



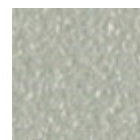
Pastel yellow steel



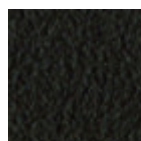
Grafite metal



Ash grey metal



Light grey steel



Brown steel



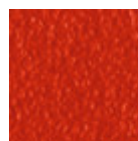
Black steel



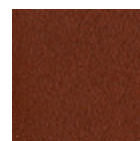
Ocher steel



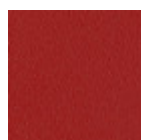
Facepowder pink metal



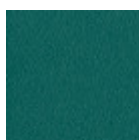
Red steel



Bulgaro red metal



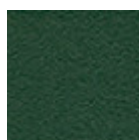
Cherry red metal



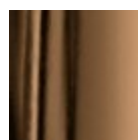
Pine green steel



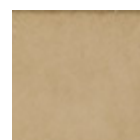
Sage green metal



Dark green metal



Golden bronze



Matt golden bronze



Black Nickel



Matt black nickel



Golden champagne



Pink Gold

Coating



Hide

18 Colors



Tuscan hide

6 Colors

Extensions



Red steel



Black steel

Dimensions



	cm	inch
A	75	29.5
B	51	20.1
C	50	19.7
D	45	17.7
E	59	23.2

Materials Certifications

Dark green metal

The technologies used in the previous phase of powder coating play a fundamental role in the final result of the processing. They are in fact essential to increase adherence paint on the metal surface and then guarantee its duration over time. The metal frames, following a total cleaning of the surface, pass through chemical conversion processes, creating a compact base that allows for better adhesion of the subsequent treatment. In the last phase the object subjected to the powder coating process is placed in a polymerization oven, going to form an adherent and extremely tight layer durable. This particular paint job is ideal for outdoor use.

To clean the surface, use a damp microfiber cloth with neutral soap or specific metal cleaning products. Avoid hitting or rubbing the surface with sharp objects. Do not use scourers or other abrasive materials, since they would inevitably scratch the surface. Do not leave rusty iron objects on the surface for too long.

These surface treatments are not suitable for outdoor use, but they guarantee excellent resistance to frequent use, dirt and dust.

Materials Certifications

Matt golden bronze

Galvanic treatments consist in applying a thin layer of a metal or other alloy, in order that properties of the



Piuma P M LG Armchair

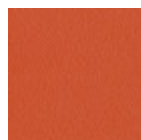
design Paolo Vernier, 2022

Armchair with four-legged metal base. Seat and backrest in ash, walnut or oak veneered wood with metal inserts in the same color as the structure. Wing nuts in black or red metal.

The Piuma collection includes the chair, armchair and stool versions with seat and back in wood, hide, leather, fabric or faux leather.

Colors and Materials

Structure



Papaya orange steel



Light blue metal



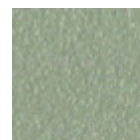
White steel



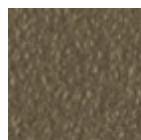
Ocean blue steel



Bronze metal



Sand steel



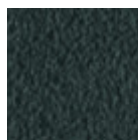
Fango steel



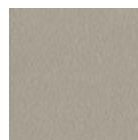
Golden yellow metal



Pastel yellow steel



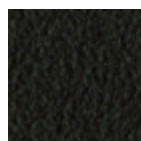
Grafite metal



Ash grey metal



Light grey steel



Brown steel



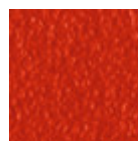
Black steel



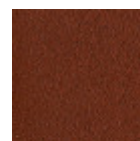
Ocher steel



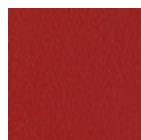
Facepowder pink metal



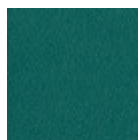
Red steel



Bulgaro red metal



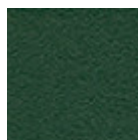
Cherry red metal



Pine green steel



Sage green metal



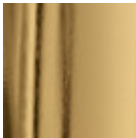
Dark green metal



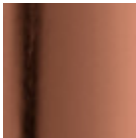
Black Nickel



Matt black nickel

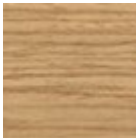


Golden champagne



Pink Gold

Coating



Stained ash veneered

10 Colors



Veneered flamed walnut



Natural oak veneered

Extensions



Black steel



Red steel

Dimensions



	cm	inch
A	75	29.5
B	51	20.1
C	50	19.7
D	45	17.7
E	59	23.2

Materials Certifications

Dark green metal

The technologies used in the previous phase of powder coating play a fundamental role in the final result of the processing. They are in fact essential to increase adherence paint on the metal surface and then guarantee its duration over time. The metal frames, following a total cleaning of the surface, pass through chemical conversion processes, creating a compact base that allows for better adhesion of the subsequent treatment. In the last phase the object subjected to the powder coating process is placed in a polymerization oven, going to form an adherent and extremely tight layer durable. This particular paint job is ideal for outdoor use.

To clean the surface, use a damp microfiber cloth with neutral soap or specific metal cleaning products. Avoid hitting or rubbing the surface with sharp objects. Do not use scourers or other abrasive materials, since they would inevitably scratch the surface. Do not leave rusty iron objects on the surface for too long.

These surface treatments are not suitable for outdoor use, but they guarantee excellent resistance to frequent use, dirt and dust.

Materials Certifications



Piuma P M TS Armchair

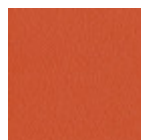
design Paolo Vernier, 2022

Armchair with four-legged metal base. Seat and back in leather, faux leather or fabric with visible metal inserts matching with the structure. Wing nuts in black or red metal.

The Piuma collection includes the chair, armchair and stool versions with seat and back in wood, hide, leather, fabric or faux leather.

Colors and Materials

Structure



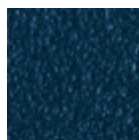
Papaya orange steel



Light blue metal



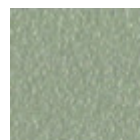
White steel



Ocean blue steel



Bronze metal



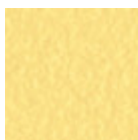
Sand steel



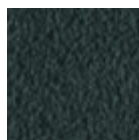
Fango steel



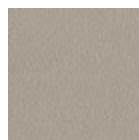
Golden yellow metal



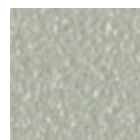
Pastel yellow steel



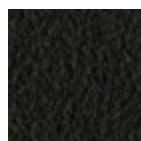
Grafite metal



Ash grey metal



Light grey steel



Brown steel



Black steel



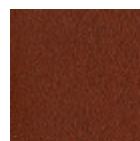
Ocher steel



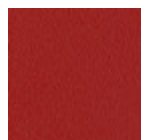
Facepowder pink metal



Red steel



Bulgaro red metal



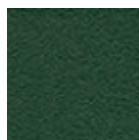
Cherry red metal



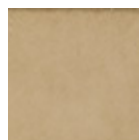
Pine green steel



Sage green metal



Dark green metal



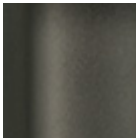
Matt golden bronze



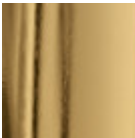
Golden bronze



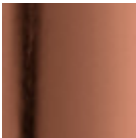
Black Nickel



Matt black nickel



Golden champagne



Pink Gold

Coating



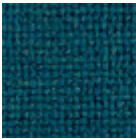
Cotton Club fabric
14 Colors



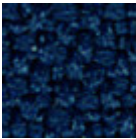
Fenix Wool fabric
16 Colors



Main Line Flax fabric
16 Colors



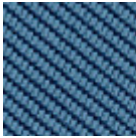
Manhattan fabric
13 Colors



Mirage fabric
15 Colors



Novabuk fabric
17 Colors



Tessuto Oceanic
13 Colors



Remix 3 fabric
19 Colors



Second fabric
11 Colors



Velvet Superb
15 Colors



Uniform Melange
Fabric
7 Colors



Visual fabric
13 Colors



Yoredale fabric
14 Colors



Secret faux leather
23 Colors



Vintage faux leather
12 Colors



Fiore leather
21 Colors



Vintage leather
8 Colors

Extensions



Black steel



Red steel

Dimensions



	cm	inch
A	75	29.5
B	51	20.1
C	50	19.7
D	45	17.7
E	59	23.2

Materials Certifications

Dark green metal

The technologies used in the previous phase of powder coating play a fundamental role in the final result of the processing. They are in fact essential to increase adherence paint on the metal surface and then guarantee its duration over time. The metal frames, following a total cleaning of the surface, pass through chemical conversion processes, creating a compact base that allows for better adhesion of the



Piuma S M CU Chair

design Paolo Vernier, 2022

Chair with four-legs metal base. Seat and back in hide or Tuscan hide with metal inserts in the same color as the structure. Wing nuts in black or red metal.

The Piuma collection includes the chair, armchair and stool versions with seat and back in wood, hide, leather, fabric or faux leather.

Colors and Materials

Structure



Papaya orange steel



Light blue metal



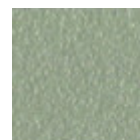
White steel



Ocean blue steel



Bronze metal



Sand steel



Fango steel



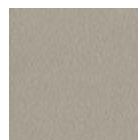
Golden yellow metal



Pastel yellow steel



Grafite metal



Ash grey metal



Light grey steel



Brown steel



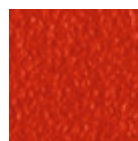
Black steel



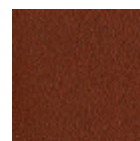
Ocher steel



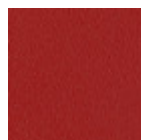
Facepowder pink metal



Red steel



Bulgaro red metal



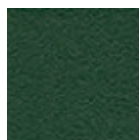
Cherry red metal



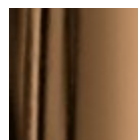
Pine green steel



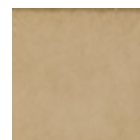
Sage green metal



Dark green metal



Golden bronze



Matt golden bronze



Black Nickel



Matt black nickel



Golden champagne



Pink Gold

Coating



Hide

18 Colors



Tuscan hide

6 Colors

Extensions

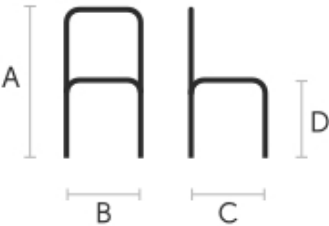


Red steel



Black steel

Dimensions



	cm	inch
A	75	29.5
B	41	16.1
C	50	19.7
D	45	17.7

Materials Certifications

Dark green metal

The technologies used in the previous phase of powder coating play a fundamental role in the final result of the processing. They are in fact essential to increase adherence paint on the metal surface and then guarantee its duration over time. The metal frames, following a total cleaning of the surface, pass through chemical conversion processes, creating a compact base that allows for better adhesion of the subsequent treatment. In the last phase the object subjected to the powder coating process is placed in a polymerization oven, going to form an adherent and extremely tight layer durable. This particular paint job is ideal for outdoor use.

To clean the surface, use a damp microfiber cloth with neutral soap or specific metal cleaning products. Avoid hitting or rubbing the surface with sharp objects. Do not use scourers or other abrasive materials, since they would inevitably scratch the surface. Do not leave rusty iron objects on the surface for too long.

These surface treatments are not suitable for outdoor use, but they guarantee excellent resistance to frequent use, dirt and dust.

Materials Certifications

Matt golden bronze

Galvanic treatments consist in applying a thin layer of a metal or other alloy, in order that properties of the