



Silvy H65 M TS Stool

design Midj R&D, 2015

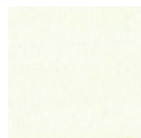
Silvy stool with four leg base in chrome or lacquered metal. Seat upholstered in leather, ecoleather or fabric.

The stools are stackable up to four units.

Seat height: 65cm (25.6").

Colors and Materials

Structure



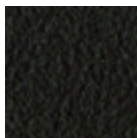
White steel



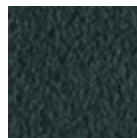
Black steel



Sand steel



Brown steel

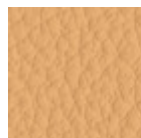


Grafite metal



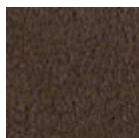
Chrome

Coating



Fiore leather

21 Colors



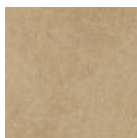
Vintage leather

8 Colors



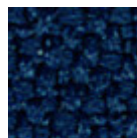
Secret faux leather

23 Colors



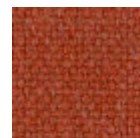
Vintage faux leather

12 Colors



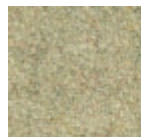
Mirage fabric

15 Colors



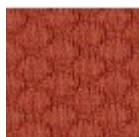
Cotton Club fabric

14 Colors



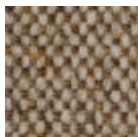
Fenix Wool fabric

16 Colors



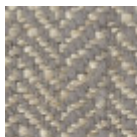
Visual fabric

13 Colors



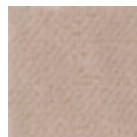
Main Line Flax fabric

16 Colors



Second fabric

11 Colors



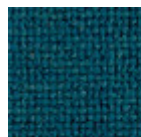
Velvet Superb

15 Colors



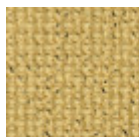
Tessuto Oceanic

13 Colors



Manhattan fabric

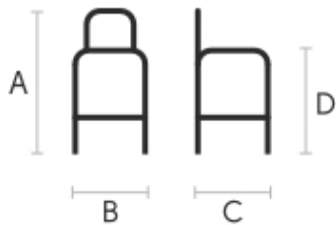
13 Colors



Yoredale fabric

14 Colors

Dimensions



Volumetric Details

Weight 4.5 Kg
Volume 0.28 mc
Package 1

	cm	inch
A	94	37
B	45	17.7
C	48	18.9
D	65	25.6

Materials Certifications

Fiore leather

COMPOSITION: 100% leather

FIRE RESISTANCE:
CAL TB-117 (2013, Sec. 1)
BS 5852:1979
BS EN 1021-1-2:2006

Fiore leather is a natural product and this is why it can show signs such as wrinkles, veining and scars that indicate the animal origin of the product. These signs, together with slightly color differences, are distinctive elements that enhance its beauty and distinguish it from faux leather or other artificial products. Fiore is a bovine leather from animals of European origin, finished with water-based dyeing with resins and pigments. Fiore leather has the ability of improving with time and use, both in softness and shine.

Dust the leather product regularly with a soft and dry cloth. In case of stains, rub the affected area with a soft and clean cloth, moistened with water or to use a light solution of water and mild soap, to be applied gently with a wet cloth. Move the cloth in a circular direction, starting from edges of the stain towards the center. Rinse well with a damp cloth. Dry immediately after treatment. Avoid direct sunlight and exposure to heat sources.

We recommend that you always test the cleaning method on a hidden part of the item to check the resistance of the color.

These tips are cleaning recommendations and do not guarantee complete stain removal. In case of large stains, we recommend contacting an operator specialized in upholstered products cleaning.

Colour samples are to be considered approximate for each product. Slight color differences between a lot and the other are to be considered normal.

Materials Certifications

Vintage leather

FIRE RESISTANCE:
BS 5852 : 1979
BS EN 1021-1-2 : 2006

Vintage leather is a natural product and this is why it can show signs such as wrinkles, veining and scars that indicate the animal origin of the product. These signs, together with slightly color differences, are distinctive elements that enhance its beauty and distinguish it from faux leather or other artificial products. Vintage is a bovine leather from animals of European origin. This product is obtained starting from Nabuck leather, which is slightly equalized with aniline, and hand abraded to give an aged effect. The hand is very warm and silky.

CLEANING AND MAINTENANCE

Dust the leather product regularly with a soft and dry cloth. In case of stains, rub the affected area with a



Silvy H75 M TS Stool

design Midj R&D, 2015

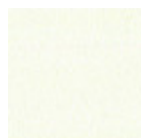
Silvy stool with four leg base in chrome or lacquered metal. Seat upholstered in leather, ecoleather or fabric.

The stools are stackable up to four units.

Seat height: 75cm (29.5")

Colors and Materials

Structure



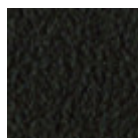
White steel



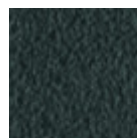
Black steel



Sand steel



Brown steel



Grafite metal



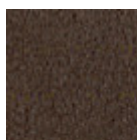
Chrome

Coating



Fiore leather

21 Colors



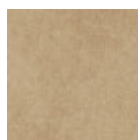
Vintage leather

8 Colors



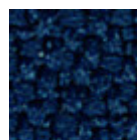
Secret faux leather

23 Colors



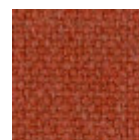
Vintage faux leather

12 Colors



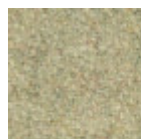
Mirage fabric

15 Colors



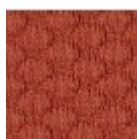
Cotton Club fabric

14 Colors



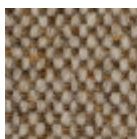
Fenix Wool fabric

16 Colors



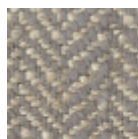
Visual fabric

13 Colors



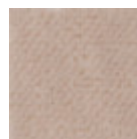
Main Line Flax fabric

16 Colors



Second fabric

11 Colors



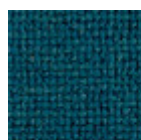
Velvet Superb

15 Colors



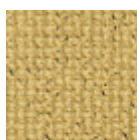
Tessuto Oceanic

13 Colors



Manhattan fabric

13 Colors



Yoredale fabric

14 Colors

Dimensions



Volumetric Details

Weight 5 Kg
Volume 0.29 mc
Package 1

	cm	inch
A	104	40.9
B	45	17.7
C	48	18.9
D	75	29.5

Materials Certifications

Fiore leather

COMPOSITION: 100% leather

FIRE RESISTANCE:
CAL TB-117 (2013, Sec. 1)
BS 5852:1979
BS EN 1021-1-2:2006

Fiore leather is a natural product and this is why it can show signs such as wrinkles, veining and scars that indicate the animal origin of the product. These signs, together with slightly color differences, are distinctive elements that enhance its beauty and distinguish it from faux leather or other artificial products. Fiore is a bovine leather from animals of European origin, finished with water-based dyeing with resins and pigments. Fiore leather has the ability of improving with time and use, both in softness and shine.

Dust the leather product regularly with a soft and dry cloth. In case of stains, rub the affected area with a soft and clean cloth, moistened with water or to use a light solution of water and mild soap, to be applied gently with a wet cloth. Move the cloth in a circular direction, starting from edges of the stain towards the center. Rinse well with a damp cloth. Dry immediately after treatment. Avoid direct sunlight and exposure to heat sources. We recommend that you always test the cleaning method on a hidden part of the item to check the resistance of the color. These tips are cleaning recommendations and do not guarantee complete stain removal. In case of large stains, we recommend contacting an operator specialized in upholstered products cleaning.

Colour samples are to be considered approximate for each product. Slight color differences between a lot and the other are to be considered normal.

Materials Certifications

Vintage leather

FIRE RESISTANCE:
BS 5852 : 1979
BS EN 1021-1-2 : 2006

Vintage leather is a natural product and this is why it can show signs such as wrinkles, veining and scars that indicate the animal origin of the product. These signs, together with slightly color differences, are distinctive elements that enhance its beauty and distinguish it from faux leather or other artificial products. Vintage is a bovine leather from animals of European origin. This product is obtained starting from Nabuck leather, which is slightly equalized with aniline, and hand abraded to give an aged effect. The hand is very warm and silky.

CLEANING AND MAINTENANCE
Dust the leather product regularly with a soft and dry cloth. In case of stains, rub the affected area with a



Silvy H75 M CU Stool

design Midj R&D, 2015

Silvy stool with four leg frame in chrome or lacquered metal. Seat and back upholstered in hide.

Stools are stackable up to four pieces.

Seat height 75cm (29.5").

Colors and Materials

Structure



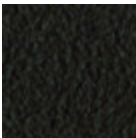
White steel



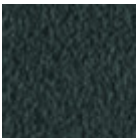
Black steel



Sand steel



Metallo Marrone



Grafite metal



Chrome

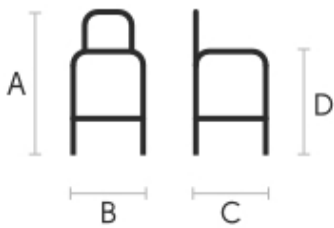
Coating



Hide

18 Colors

Dimensions



	cm	inch
A	104	40.9
B	45	17.7
C	48	18.9
D	75	29.5

Volumetric Details

Weight 5 Kg
Volume 0.29 mc
Package 1

Materials Certifications



Silvy H65 M CU Stool

design Midj R&D, 2015

Silvy stool with four leg frame in chrome or lacquered metal. Seat and back upholstered in hide.

Stools are stackable up to four pieces.

Seat height 65cm (25.6").

Colors and Materials

Structure



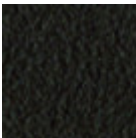
White steel



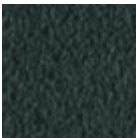
Black steel



Sand steel



Brown steel



Grafite metal



Chrome

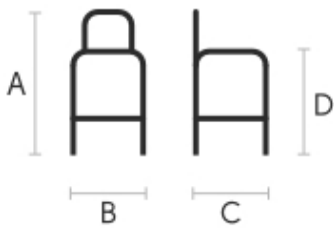
Coating



Hide

18 Colors

Dimensions



	cm	inch
A	94	37
B	45	17.7
C	48	18.9
D	65	25.6

Volumetric Details

Weight 4.5 Kg
Volume 0.27 mc
Package 1

Materials Certifications