



Slim S M Chair

design Paolo Vernier, 2017

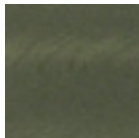
The Slim chair with sled base is available for indoor and outdoor use.

The outdoor version is available in 15 weather-resistant finishes.

Chairs are stackable up to four pieces and have the CATAS certification.

Colors and Materials

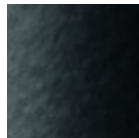
Structure



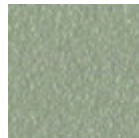
Industrial steel



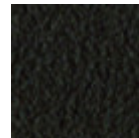
White steel



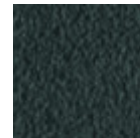
Black steel



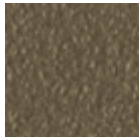
Sand steel



Brown steel



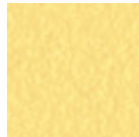
Grafite metal



Fango steel



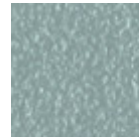
Bronze metal



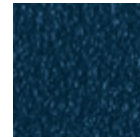
Pastel yellow steel



Ocher steel



Light blue metal



Ocean blue steel

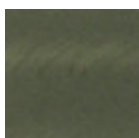


Light grey steel

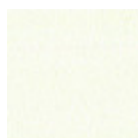


Facepowder pink metal

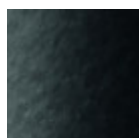
Coating



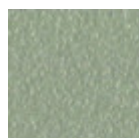
Industrial steel



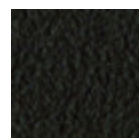
White steel



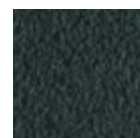
Black steel



Sand steel



Brown steel



Grafite metal



Fango steel



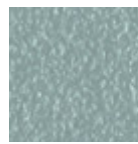
Bronze metal



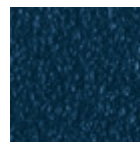
Red steel



Sage green metal



Light blue metal



Ocean blue steel

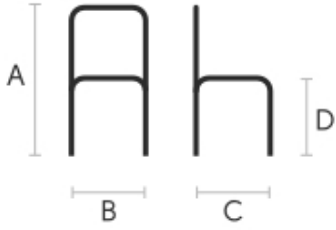


Light grey steel



Facepowder pink metal

Dimensions



	cm	inch
A	76	29.9
B	51	20.1
C	51	20.1
D	46	18.1

Volumetric Details

Weight 7 Kg

Volume 0.29 mc

Package 1

Certifications



Catas
EN 1728



Slim S M CU Chair

design Paolo Vernier, 2017

The Slim chair with metal sled base presents seat and backrest in hide or tuscan hide.

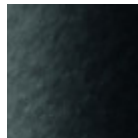
Chairs are stackable up to four pieces and have the CATAS certification.

Colors and Materials

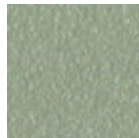
Structure



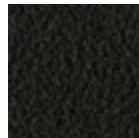
White steel



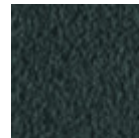
Black steel



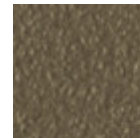
Sand steel



Brown steel



Grafite metal



Fango steel



Bronze metal



Pastel yellow steel



Ocher steel



Red steel



Sage green metal



Light blue metal



Ocean blue steel



Light grey steel



Facepowder pink metal



Pink Gold

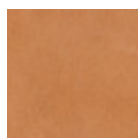


Black Nickel

Coating

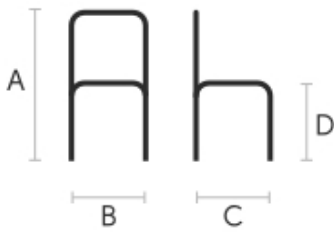


Hide
18 Colors



Tuscan hide
6 Colors

Dimensions



Volumetric Details

Weight 7 Kg
Volume 0.29 mc
Package 1

Certifications

CATAS
CATAS
EN 1728

	cm	inch
A	76	29.9
B	51	20.1
C	51	20.1
D	46	18.1

Downloads

[3S Slim S CU \(zip\)](https://www.midj.com/images/uploads/resources/slim-s-cu-3d.zip) - <https://www.midj.com/images/uploads/resources/slim-s-cu-3d.zip>

Materials Certifications

Hide

FIRE RESISTANCE:
CLASSE 1IM
BS 5852 1-2

Hide is hygienic and practical, wear resistant and breathable. It is obtained from skin of cattle raised for food purposes, and subsequently treated with chromium salts. Any imperfections on the hide surface are a natural feature that guarantee its originality.

CLEANING AND MAINTENANCE

Dust the surface regularly, with a dry and soft cloth. In case of stains, use only a non-abrasive damp cloth, and gently rub the area by moving the cloth in a circular direction starting from the edges of the stain towards the center. We recommend to act promptly: a delay could compromise the cleaning result. Do not use products that contain solvents or alcohol since they can damage the surface. Dry immediately after treatment. For a good conservation of the product, avoid direct sunlight, that can alter its characteristics and color, as well as exposure to heat sources.

We recommend that you always test the cleaning method on a hidden part of the item to check the resistance of the color. These tips are cleaning recommendations and do not guarantee complete stain removal.

Colour samples are to be considered approximate for each product. Slight color differences between a lot and the other are to be considered normal.

Materials Certifications

Tuscan hide

TYPE: NABUK TUSCAN HIDE

Nabuk Tuscan hide is obtained by working on the external part of the animal's skin, the fiore part. The surface is polished by using specific machinery, with the aim of obtaining a soft and velvety surface. Nabuk is a very fine hide, as only the best leathers are suitable for this type of processing, but at the same time it must be carefully maintained. Small imperfections on the surface guarantee its originality and naturalness, and are not to be considered manufacturing defects. This material is not water repellent and fears humidity. To maintain the beauty of the original color, avoid putting the Nabuk Tuscan hide into contact with water or any other liquid. Absorption of liquid can lead to an alteration of the finish.

TYPE: FIORE TUSCAN HIDE

Fiore Tuscan hide is a high-quality natural material, and softness is its main feature. Hide is not afraid to show the signs of time, that contribute to make it a unique product. Possible imperfections such as scratches, scars or stains on its surface are a natural feature that guarantee its originality and quality. This material is not water repellent and fears humidity. To maintain the beauty of the original color, avoid putting the Fiore Tuscan hide into contact with water or any other liquid. Absorption of liquid can lead to



Slim S M TS Chair

design Paolo Vernier, 2017

The Slim chair with metal sled base, presents seat and backrest upholstered in hide, leather, faux leather or fabric.

Chairs are stackable up to four pieces and have the CATAS certification.

Colors and Materials

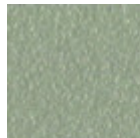
Structure



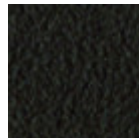
White steel



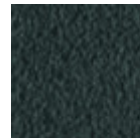
Black steel



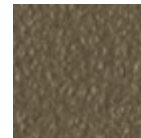
Sand steel



Brown steel



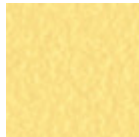
Grafite metal



Fango steel



Bronze metal



Pastel yellow steel



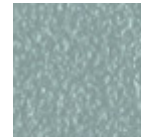
Ocher steel



Red steel



Sage green metal



Light blue metal



Ocean blue steel



Facepowder pink metal



Light grey steel



Black Nickel

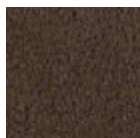


Pink Gold

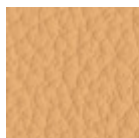


Golden bronze

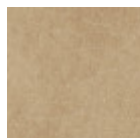
Coating



Vintage leather
8 Colors



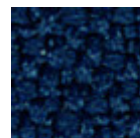
Fiore leather
21 Colors



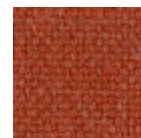
Vintage faux leather
12 Colors



Secret faux leather
23 Colors



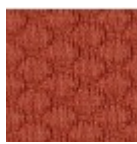
Mirage fabric
15 Colors



Cotton Club fabric
14 Colors

**Fenix Wool fabric**

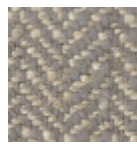
16 Colors

**Visual fabric**

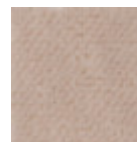
13 Colors

**Main Line Flax fabric**

16 Colors

**Second fabric**

11 Colors

**Velvet Superb**

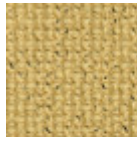
15 Colors

**Tessuto Oceanic**

13 Colors

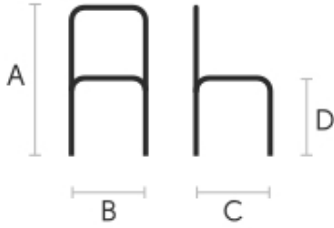
**Manhattan fabric**

13 Colors

**Yoredale fabric**

14 Colors

Dimensions



	cm	inch
A	76	29.9
B	51	20.1
C	51	20.1
D	46	18.1

Volumetric Details

Weight 7 Kg**Volume** 0.29 mc**Package** 1

Certifications

**CATAS**
EN 1728

Downloads

3D Slim S TS (zip) - <https://www.midj.com/images/uploads/resources/slim-s-ts-3d.zip>

Materials Certifications

Vintage leather

FIRE RESISTANCE:

BS 5852 : 1979

BS EN 1021-1-2 : 2006

Vintage leather is a natural product and this is why it can show signs such as wrinkles, veining and scars that indicate the animal origin of the product. These signs, together with slightly color differences, are distinctive elements that enhance its beauty and distinguish it from faux leather or other artificial products. Vintage is a bovine leather from animals of European origin. This product is obtained starting from Nabuck leather, which is slightly equalized with aniline, and hand abraded to give an aged effect. The hand is very warm and silky.

CLEANING AND MAINTENANCE

Dust the leather product regularly with a soft and dry cloth. In case of stains, rub the affected area with a soft and clean cloth, moistened with water or use a light solution of water and mild soap, to be applied gently with a wet cloth. Move the cloth in a circular direction, starting from edges of the stain towards the center. Rinse well with a damp cloth. Dry immediately after treatment. Avoid direct sunlight and exposure to heat sources.

We recommend that you always test the cleaning method on a hidden part of the item to check the resistance of the color.

These tips are cleaning recommendations and do not guarantee complete stain removal. In case of large stains, we recommend contacting an operator specialized in upholstered products cleaning.

Colour samples are to be considered approximate for each product. Slight color differences between a lot