

# MIDJ

## Sonny SG\_YD Stool

design Midj R&D, 2015



Sonny swivel and height adjustable stool with metal structure and seat in fabric, leather or faux leather.

For this model it is possible to choose a two-color upholstery or two different materials for the front and back.

### Colors and Materials

#### Structure



Papaya orange steel



Light blue metal



White steel



Ocean blue steel



Bronze metal



Sand steel



Fango steel



Golden yellow metal



Pastel yellow steel



Grafite metal



Ash grey metal



Light grey steel



Brown steel



Black steel



Ocher steel



Facepowder pink metal



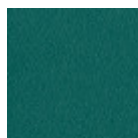
Red steel



Bulgaro red metal



Cherry red metal



Pine green steel



Sage green metal



Dark green metal

#### Coating

**Cotton Club fabric**

14 Colors

**Fenix Wool fabric**

16 Colors

**Main Line Flax fabric**

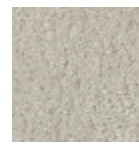
16 Colors

**Manhattan fabric**

13 Colors

**Mirage fabric**

15 Colors

**Novabuk fabric**

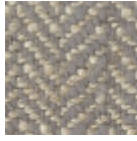
17 Colors

**Tessuto Oceanic**

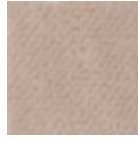
13 Colors

**Remix 3 fabric**

19 Colors

**Second fabric**

11 Colors

**Velvet Superb**

15 Colors

**Uniform Melange Fabric**

7 Colors

**Visual fabric**

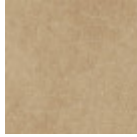
13 Colors

**Yoredale fabric**

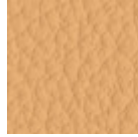
14 Colors

**Secret faux leather**

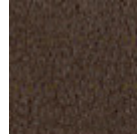
23 Colors

**Vintage faux leather**

12 Colors

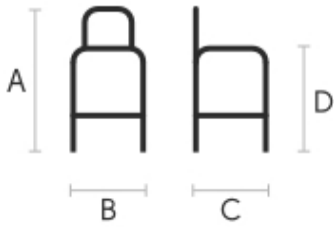
**Fiore leather**

21 Colors

**Vintage leather**

8 Colors

## Dimensions



	cm	inch
A	97/112	38.2/44.1
B	55	21.7
C	51	20.1
D	64/79	25.2/31.1

## Volumetric Details

**Weight** 17 Kg**Volume** 0.32 mc**Package** 1

## Materials Certifications

### Dark green metal

The technologies used in the previous phase of powder coating play a fundamental role in the final result of the processing. They are in fact essential to increase adherence paint on the metal surface and then guarantee its duration over time. The metal frames, following a total cleaning of the surface, pass through chemical conversion processes, creating a compact base that allows for better adhesion of the subsequent treatment. In the last phase the object subjected to the powder coating process is placed in a polymerization oven, going to form an adherent and extremely tight layer durable. This particular paint job is ideal for outdoor use.

To clean the surface, use a damp microfiber cloth with neutral soap or specific metal cleaning products. Avoid hitting or rubbing the surface with sharp objects. Do not use scourers or other abrasive materials, since they would inevitably scratch the surface. Do not leave rusty iron objects on the surface for too long.

These surface treatments are not suitable for outdoor use, but they guarantee excellent resistance to frequent use, dirt and dust.

## Materials Certifications

### Cotton Club fabric

COMPOSITION: 70 % COT; 10% PES; 10% ACR; 10% AF  
Abrasion resistance (Martindale) 100.000 cycles

Cotton Club by Flukso is a fabric made from latest generation regenerated cotton yarns. To create this



# Sonny H65 / H75 Stool

design Midj R&D, 2015

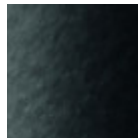
Sonny fixes stool with four legs frame in lacquered steel. Upholstered shell in fabric, leather, ecoleather or custom's fabric. Heigh seat: 65 cm (25.6") or 75 cm (29.5").

## Colors and Materials

### Structure



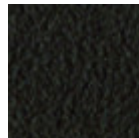
White steel



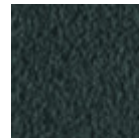
Black steel



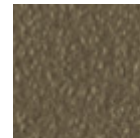
Sand steel



Brown steel



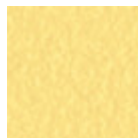
Grafite metal



Fango steel



Bronze metal



Pastel yellow steel



Ocher steel



Red steel



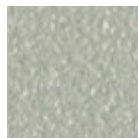
Sage green metal



Light blue metal



Ocean blue steel

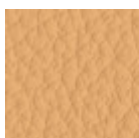


Light grey steel

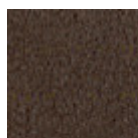


Facepowder pink metal

### Coating



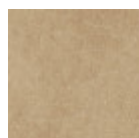
Fiore leather  
21 Colors



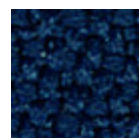
Vintage leather  
8 Colors



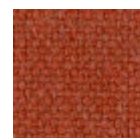
Secret faux leather  
23 Colors



Vintage faux leather  
12 Colors



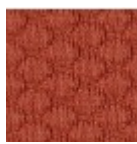
Mirage fabric  
15 Colors



Cotton Club fabric  
14 Colors

**Fenix Wool fabric**

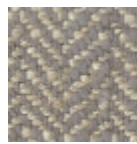
16 Colors

**Visual fabric**

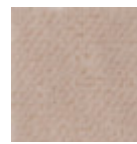
13 Colors

**Main Line Flax fabric**

16 Colors

**Second fabric**

11 Colors

**Velvet Superb**

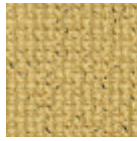
15 Colors

**Tessuto Oceanic**

13 Colors

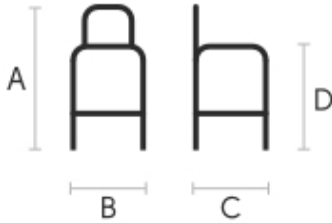
**Manhattan fabric**

13 Colors

**Yoredale fabric**

14 Colors

## Dimensions



	<b>A</b> <b>(cm)</b> (inch)	<b>B</b> <b>(cm)</b> (inch)	<b>C</b> <b>(cm)</b> (inch)	<b>D</b> <b>(cm)</b> (inch)
<b>H65</b> <b>(cm)</b> (inch)	100 39.4	52 20.5	58 22.8	65 25.6
<b>H75</b> <b>(cm)</b> (inch)	110 43.3	52 20.5	58 22.8	75 29.5

## Volumetric Details

**Weight** 10 Kg  
**Volume** 0.38 mc  
**Package** 1

## Downloads

- [Sonny Catalog \(pdf\)](https://www.midj.com/images/uploads/resources/sonny-danny-catalogo-2017.pdf) - <https://www.midj.com/images/uploads/resources/sonny-danny-catalogo-2017.pdf>
- [.3dobject Sonny H65 M TS \(zip\)](https://www.midj.com/images/uploads/resources/3d-midj-sonny-h65mts-3dobject.zip) - <https://www.midj.com/images/uploads/resources/3d-midj-sonny-h65mts-3dobject.zip>
- [.3ds Sonny H65 M TS \(zip\)](https://www.midj.com/images/uploads/resources/3d-midj-sonny-h65mts-3ds.zip) - <https://www.midj.com/images/uploads/resources/3d-midj-sonny-h65mts-3ds.zip>
- [.dwg Sonny H65 M TS \(zip\)](https://www.midj.com/images/uploads/resources/3d-midj-sonny-h65mts-dwg.zip) - <https://www.midj.com/images/uploads/resources/3d-midj-sonny-h65mts-dwg.zip>
- [.dxf Sonny H65 M TS \(zip\)](https://www.midj.com/images/uploads/resources/3d-midj-sonny-h65mts-dxf.zip) - <https://www.midj.com/images/uploads/resources/3d-midj-sonny-h65mts-dxf.zip>
- [.fbx Sonny H65 M TS \(zip\)](https://www.midj.com/images/uploads/resources/3d-midj-sonny-h65mts-fbx.zip) - <https://www.midj.com/images/uploads/resources/3d-midj-sonny-h65mts-fbx.zip>
- [.3dobject Sonny H75 M TS \(zip\)](https://www.midj.com/images/uploads/resources/3d-midj-h75mts-3dobject.zip) - <https://www.midj.com/images/uploads/resources/3d-midj-h75mts-3dobject.zip>
- [.3ds Sonny H75 M TS \(zip\)](https://www.midj.com/images/uploads/resources/3d-midj-h75mts-3ds.zip) - <https://www.midj.com/images/uploads/resources/3d-midj-h75mts-3ds.zip>
- [.dwg Sonny H75 M TS \(zip\)](https://www.midj.com/images/uploads/resources/3d-midj-h75mts-dwg.zip) - <https://www.midj.com/images/uploads/resources/3d-midj-h75mts-dwg.zip>
- [.dxf Sonny H75 M TS \(zip\)](https://www.midj.com/images/uploads/resources/3d-midj-h75mts-dxf.zip) - <https://www.midj.com/images/uploads/resources/3d-midj-h75mts-dxf.zip>
- [.fbx Sonny H75 M TS \(zip\)](https://www.midj.com/images/uploads/resources/3d-midj-h75mts-fbx.zip) - <https://www.midj.com/images/uploads/resources/3d-midj-h75mts-fbx.zip>

## Materials Certifications

### Fiore leather

COMPOSITION: 100% leather

FIRE RESISTANCE:  
 CAL TB-117 (2013, Sec. 1)  
 BS 5852:1979  
 BS EN 1021-1-2:2006

Fiore leather is a natural product and this is why it can show signs such as wrinkles, veining and scars that indicate the animal origin of the product. These signs, together with slightly color differences, are distinctive elements that enhance its beauty and distinguish it from faux leather or other artificial products.

Fiore

is a bovine leather from animals of European origin, finished with water-based dyeing with resins and



# Sonny H65 LR TS Stool

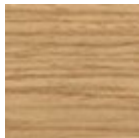
design Midj R&D, 2015

Stool with stained wood base and seating in leather, faux leather or fabric. It is possible to upholster the back with a different fabric from the inside of the seat.

Available in the H75 version.

## Colors and Materials

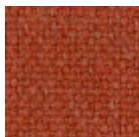
### Structure



**Lacquered ash**

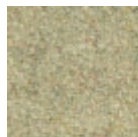
11 Colors

### Coating



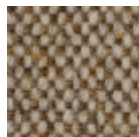
**Cotton Club fabric**

14 Colors



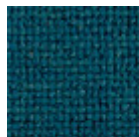
**Fenix Wool fabric**

16 Colors



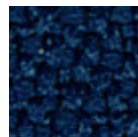
**Main Line Flax fabric**

16 Colors



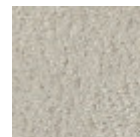
**Manhattan fabric**

13 Colors



**Mirage fabric**

15 Colors



**Novabuk fabric**

17 Colors



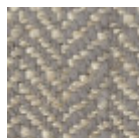
**Tessuto Oceanic**

13 Colors



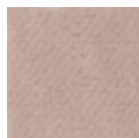
**Remix 3 fabric**

19 Colors



**Second fabric**

11 Colors



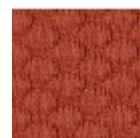
**Velvet Superb**

15 Colors



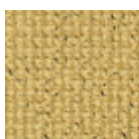
**Uniform Melange Fabric**

7 Colors



**Visual fabric**

13 Colors



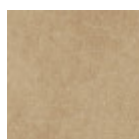
**Yoredale fabric**

14 Colors



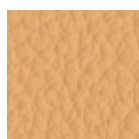
**Secret faux leather**

23 Colors



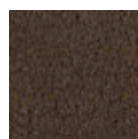
**Vintage faux leather**

12 Colors



**Fiore leather**

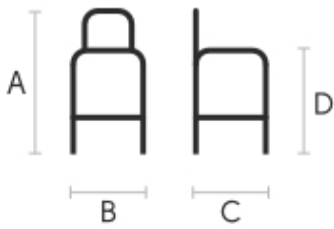
21 Colors



**Vintage leather**

8 Colors

## Dimensions



A	B	C
(cm)	(cm)	(cm)
(inch)	(inch)	(inch)

Sonny				
H65 LR	99	51	55	67
TS (cm)	39	20.1	21.7	26.4
	(inch)			
Sonny				
H75 LR	109	51	55	77
TS (cm)	42.9	20.1	21.7	30.3
	(inch)			

## Materials Certifications

### Lacquered ash

Ash wood is durable material, with good resistance and flexibility. Thanks to its porosity, it is ideal to be lacquered. Its original color is quite light: it can range from light blond, to pink and pale brown, with possible shades of green. In our set of samples, it is available in the natural finish and in numerous color variations: from the classic wood effects to the most pop colors of the moment. The ash used for our materials is European.

#### CLEANING AND MAINTENANCE

Ash is an easy-to-clean wood: to remove dust or light stains, rub the surface with a soft cloth, if necessary moistened in a solution of hot water or white vinegar, to help eliminate stains without altering the beauty and shine of the wood. Always dry the surface. In addition, you can choose to use specific products for wooden furniture.

These tips are cleaning recommendations and do not guarantee complete stain removal. We recommend that you always test the cleaning method on a hidden part of the item to check the resistance of the color.

Colour samples are to be considered approximate for each product. Slight color differences between a lot and the other are to be considered normal.

## Materials Certifications

### Cotton Club fabric

COMPOSITION: 70 % COT; 10% PES; 10% ACR; 10% AF  
Abrasion resistance (Martindale) 100.000 cycles

Cotton Club by Flukso is a fabric made from latest generation regenerated cotton yarns. To create this fabric, specific fixing techniques were used, that give it and help maintaining a natural, slightly wavy and vibrated look.

#### CLEANING AND MAINTENANCE

Regular cleaning is important to extend the life of the coating, and keep its appearance unchanged. Dust and dirt can wear out the coating.

REGULAR CLEANING: vacuum frequently, at least once a week, at a power equal to half the device in use, choosing a smooth spout, without brushing.

STAIN REMOVAL: in case of slight stains, promptly clean the surface. Remove excess liquids or hard parts of dirt with a clean cloth, then proceed on the residue of the stain with a damp cloth or a neutral soap solution.

Remove the stain starting from the edge of the stain moving towards the center of it, then rinse with water. Let dry, avoiding direct exposure to sunlight.

For localized and more persistent stains, promptly dissolve the stain with colorless ethyl alcohol diluted in



# Sonny H75 LR TS Stool

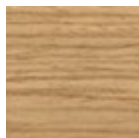
design Midj R&D, 2015

Stool with stained wood base and seating in leather, faux leather or fabric. It is possible to upholster the back with a different fabric from the inside of the seat.

Available in the H65 version.

## Colors and Materials

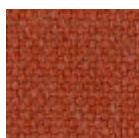
### Structure



**Lacquered ash**

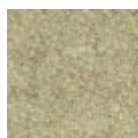
11 Colors

### Coating



**Cotton Club fabric**

14 Colors



**Fenix Wool fabric**

16 Colors



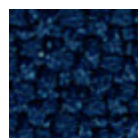
**Main Line Flax fabric**

16 Colors



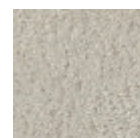
**Manhattan fabric**

13 Colors



**Mirage fabric**

15 Colors



**Novabuk fabric**

17 Colors



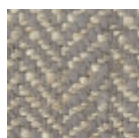
**Tessuto Oceanic**

13 Colors



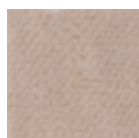
**Remix 3 fabric**

19 Colors



**Second fabric**

11 Colors



**Velvet Superb**

15 Colors



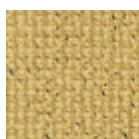
**Uniform Melange Fabric**

7 Colors



**Visual fabric**

13 Colors



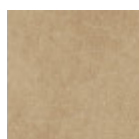
**Yoredale fabric**

14 Colors



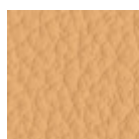
**Secret faux leather**

23 Colors



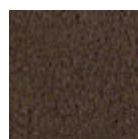
**Vintage faux leather**

12 Colors



**Fiore leather**

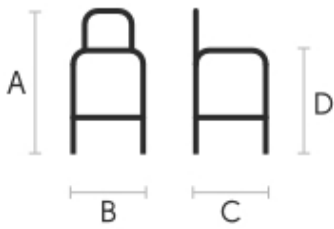
21 Colors



**Vintage leather**

8 Colors

## Dimensions



A	B	C
(cm)	(cm)	(cm)
(inch)	(inch)	(inch)

Sonny				
H65 LR	99	51	55	67
TS (cm)	39	20.1	21.7	26.4
	(inch)			
Sonny				
H75 LR	109	51	55	77
TS (cm)	42.9	20.1	21.7	30.3
	(inch)			

## Materials Certifications

### Lacquered ash

Ash wood is durable material, with good resistance and flexibility. Thanks to its porosity, it is ideal to be lacquered. Its original color is quite light: it can range from light blond, to pink and pale brown, with possible shades of green. In our set of samples, it is available in the natural finish and in numerous color variations: from the classic wood effects to the most pop colors of the moment. The ash used for our materials is European.

#### CLEANING AND MAINTENANCE

Ash is an easy-to-clean wood: to remove dust or light stains, rub the surface with a soft cloth, if necessary moistened in a solution of hot water or white vinegar, to help eliminate stains without altering the beauty and shine of the wood. Always dry the surface. In addition, you can choose to use specific products for wooden furniture.

These tips are cleaning recommendations and do not guarantee complete stain removal. We recommend that you always test the cleaning method on a hidden part of the item to check the resistance of the color.

Colour samples are to be considered approximate for each product. Slight color differences between a lot and the other are to be considered normal.

## Materials Certifications

### Cotton Club fabric

COMPOSITION: 70 % COT; 10% PES; 10% ACR; 10% AF  
Abrasion resistance (Martindale) 100.000 cycles

Cotton Club by Flukso is a fabric made from latest generation regenerated cotton yarns. To create this fabric, specific fixing techniques were used, that give it and help maintaining a natural, slightly wavy and vibrated look.

#### CLEANING AND MAINTENANCE

Regular cleaning is important to extend the life of the coating, and keep its appearance unchanged. Dust and dirt can wear out the coating.

REGULAR CLEANING: vacuum frequently, at least once a week, at a power equal to half the device in use, choosing a smooth spout, without brushing.

STAIN REMOVAL: in case of slight stains, promptly clean the surface. Remove excess liquids or hard parts of dirt with a clean cloth, then proceed on the residue of the stain with a damp cloth or a neutral soap solution.

Remove the stain starting from the edge of the stain moving towards the center of it, then rinse with water. Let dry, avoiding direct exposure to sunlight.

For localized and more persistent stains, promptly dissolve the stain with colorless ethyl alcohol diluted in





# Sonny SG TS Stool

design Midj R&D, 2015

Sonny swivel and high-adjustable stool with chrome structure and fabric or leather or faux leather seat. For this model it is possible to choose a two-color upholstery or two different materials for the front and back, to be chosen from the options in our material folder.

## Colors and Materials

### Structure

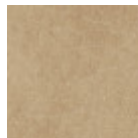


Chrome

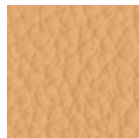
### Coating



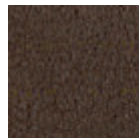
**Secret faux leather**  
23 Colors



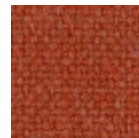
**Vintage faux leather**  
12 Colors



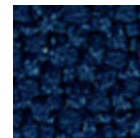
**Fiore leather**  
21 Colors



**Vintage leather**  
8 Colors



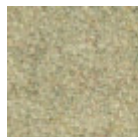
**Cotton Club fabric**  
14 Colors



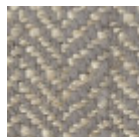
**Mirage fabric**  
15 Colors



**Velvet Superb**  
15 Colors



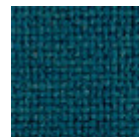
**Fenix Wool fabric**  
16 Colors



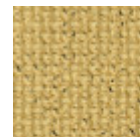
**Second fabric**  
11 Colors



**Tessuto Oceanic**  
13 Colors

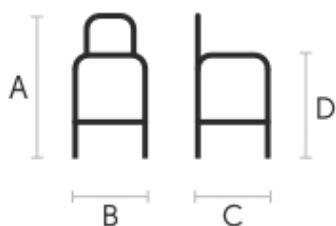


**Manhattan fabric**  
13 Colors



**Yoredale fabric**  
14 Colors

## Dimensions



	cm	inch
A	93/118	36.6/46.5

	cm	inch
<b>B</b>	51	20.1
<b>C</b>	55	21.7
<b>D</b>	58/84	22.8/33.1

## Volumetric Details

**Weight** 17 Kg  
**Volume** 0.32 mc  
**Package** 1

## Downloads

[Sonny Catalog \(pdf\)](https://www.midj.com/images/uploads/resources/sonny-danny-catalogo-2017.pdf) - <https://www.midj.com/images/uploads/resources/sonny-danny-catalogo-2017.pdf>  
[.3ds Sonny SG TS \(zip\)](https://www.midj.com/images/uploads/resources/3d-midj-sonny-sgts-3ds.zip) - <https://www.midj.com/images/uploads/resources/3d-midj-sonny-sgts-3ds.zip>  
[.3dobject Sonny SG TS \(zip\)](https://www.midj.com/images/uploads/resources/3d-midj-sonny-sgts-3dobject.zip) - <https://www.midj.com/images/uploads/resources/3d-midj-sonny-sgts-3dobject.zip>  
[.dwg Sonny SG TS \(zip\)](https://www.midj.com/images/uploads/resources/3d-midj-sonny-sgts-dwg.zip) - <https://www.midj.com/images/uploads/resources/3d-midj-sonny-sgts-dwg.zip>  
[.dxf Sonny SG TS \(zip\)](https://www.midj.com/images/uploads/resources/3d-midj-sonny-sgts-dxf.zip) - <https://www.midj.com/images/uploads/resources/3d-midj-sonny-sgts-dxf.zip>  
[.fbx Sonny SG TS \(zip\)](https://www.midj.com/images/uploads/resources/3d-midj-sonny-sgts-fbx.zip) - <https://www.midj.com/images/uploads/resources/3d-midj-sonny-sgts-fbx.zip>

## Materials Certifications

### Secret faux leather

COMPOSITION: 76% PVC - 2% PU 22% PES  
MARTINDALE: 100.000 cycles

FIRE RESISTANCE:  
UNI 9175 classe 1IM  
EN 1021-1  
EN 1021-2  
BS 5852-1 cigarette test  
BS 5852-1 match test  
TB 117:2013

Secret is the Flukso® fireproof coating with a soft hand, similar to that of real leather. Secret has been designed to create soft upholstery for interiors. Its elastic rear structure in polyester allows it to adapt to the new geometries of furniture, ensuring resistance and durability over time.

### CLEANING AND MAINTENANCE

Regular cleaning is important to extend the life of the coating, and keep its appearance unchanged. Dust and dirt can wear out the coating and damage the fire protection.

REGULAR CLEANING: vacuum frequently at a power equal to half the device in use, choosing a smooth spout, without brushing.

STAIN REMOVAL: in case of slight stains, promptly clean the surface. Remove excess liquids or hard parts of dirt with a clean cloth, then proceed on the residue of the stain with a damp cloth or a neutral soap solution. Remove the stain starting from the edge of the stain moving towards the center of it, then rinse with water. Let dry, avoiding direct exposure to sunlight. For localized and more persistent stains, promptly dissolve the stain with colorless ethyl alcohol diluted in 20% water, gently rub and then treat with a neutral soap solution, then rinse well. Do not use bleach.

These tips are cleaning recommendations and do not guarantee complete stain removal. In case of large stains, we recommend contacting an operator specialized in upholstered products cleaning.

We recommend to not expose light colored coating for a prolonged time to garments treated with colors with poor dyeing fastness, as the color pigments could penetrate the surface of the faux leather, without being able to be removed.

We recommend to always test the cleaning method on a hidden part of the item to check the color resistance.

Colour samples are to be considered approximate for each product. Slight color differences between a lot and the other are to be considered normal.

## Materials Certifications