



Sonny S MX TS Chair

design Midj R&D, 2015

Swivel chair with trestle base in lacquered steel. Upholstered shell in leather, ecoleather, fabric or custom's fabric.

Colors and Materials

Structure



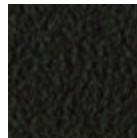
White steel



Black steel



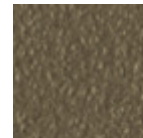
Sand steel



Brown steel



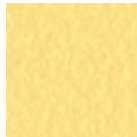
Grafite metal



Fango steel



Bronze metal



Pastel yellow steel



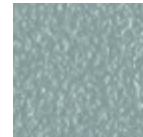
Ocher steel



Red steel



Sage green metal



Light blue metal



Ocean blue steel

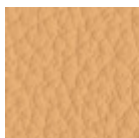


Light grey steel

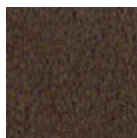


Facepowder pink metal

Coating



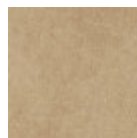
Fiore leather
21 Colors



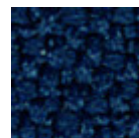
Vintage leather
8 Colors



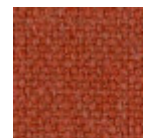
Secret faux leather
23 Colors



Vintage faux leather
12 Colors



Mirage fabric
15 Colors



Cotton Club fabric
14 Colors

**Fenix Wool fabric**

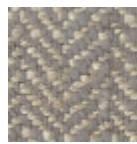
16 Colors

**Visual fabric**

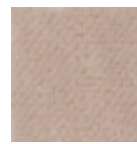
13 Colors

**Main Line Flax fabric**

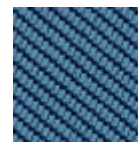
16 Colors

**Second fabric**

11 Colors

**Velvet Superb**

15 Colors

**Tessuto Oceanic**

13 Colors

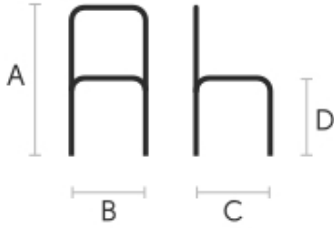
**Manhattan fabric**

13 Colors

**Yoredale fabric**

14 Colors

Dimensions



	cm	inch
A	76	29.9
B	51	20.1
C	59	23.2
D	47	18.5

Volumetric Details

Weight 11 Kg
Volume 0.28 mc
Package 1

Downloads

[.3ds Sonny S MX TS \(zip\)](https://www.midj.com/images/uploads/resources/3d-midj-sonny-smxts-3ds.zip) - <https://www.midj.com/images/uploads/resources/3d-midj-sonny-smxts-3ds.zip>

[.3dobject Sonny S MX TS \(zip\)](https://www.midj.com/images/uploads/resources/3d-midj-sonny-smxts-3dobject.zip) - <https://www.midj.com/images/uploads/resources/3d-midj-sonny-smxts-3dobject.zip>

[.dwg Sonny S MX TS \(zip\)](https://www.midj.com/images/uploads/resources/3d-midj-sonny-smxts-dwg.zip) - <https://www.midj.com/images/uploads/resources/3d-midj-sonny-smxts-dwg.zip>

[.dxf Sonny S MX TS \(zip\)](https://www.midj.com/images/uploads/resources/3d-midj-sonny-smxts-dxf.zip) - <https://www.midj.com/images/uploads/resources/3d-midj-sonny-smxts-dxf.zip>

[.fbx Sonny S MX TS \(zip\)](https://www.midj.com/images/uploads/resources/3d-midj-sonny-smxts-fbx.zip) - <https://www.midj.com/images/uploads/resources/3d-midj-sonny-smxts-fbx.zip>

Materials Certifications

Fiore leather

COMPOSITION: 100% leather

FIRE RESISTANCE:

CAL TB-117 (2013, Sec. 1)

BS 5852:1979

BS EN 1021-1-2:2006

Fiore leather is a natural product and this is why it can show signs such as wrinkles, veining and scars that indicate the animal origin of the product. These signs, together with slightly color differences, are distinctive elements that enhance its beauty and distinguish it from faux leather or other artificial products. Fiore

is a bovine leather from animals of European origin, finished with water-based dyeing with resins and pigments. Fiore leather has the ability of improving with time and use, both in softness and shine.

Dust the leather product regularly with a soft and dry cloth. In case of stains, rub the affected area with a soft and clean cloth, moistened with water or to use a light solution of water and mild soap, to be applied gently with a wet cloth. Move the cloth in a circular direction, starting from edges of the stain towards the center. Rinse well with a damp cloth. Dry immediately after treatment. Avoid direct sunlight and exposure to heat sources.

We recommend that you always test the cleaning method on a hidden part of the item to check the resistance of the color.

These tips are cleaning recommendations and do not guarantee complete stain removal. In case of large



Sonny DS TS Chair

design Midj R&D, 2015

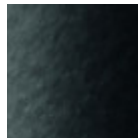
Task swivel chair with 5 ways base in lacquered steel. Chair fitted with gas mechanism for height adjustment. Shell upholstered in leather, faux leather, fabric or custom's fabric.

Colors and Materials

Structure



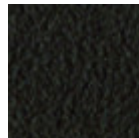
White steel



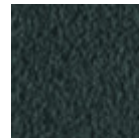
Black steel



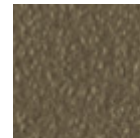
Sand steel



Brown steel



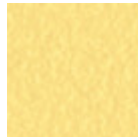
Grafite metal



Fango steel



Bronze metal



Pastel yellow steel



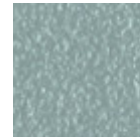
Ocher steel



Red steel



Sage green metal



Light blue metal



Ocean blue steel



Light grey steel

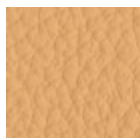


Facepowder pink metal

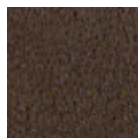


Chrome

Coating



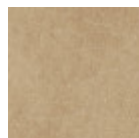
Fiore leather
21 Colors



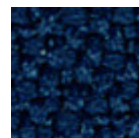
Vintage leather
8 Colors



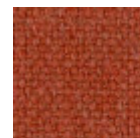
Secret faux leather
23 Colors



Vintage faux leather
12 Colors



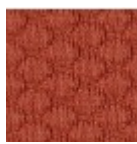
Mirage fabric
15 Colors



Cotton Club fabric
14 Colors

**Fenix Wool fabric**

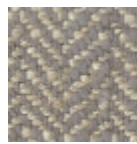
16 Colors

**Visual fabric**

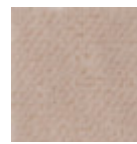
13 Colors

**Main Line Flax fabric**

16 Colors

**Second fabric**

11 Colors

**Velvet Superb**

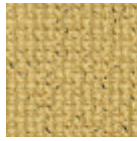
15 Colors

**Tessuto Oceanic**

13 Colors

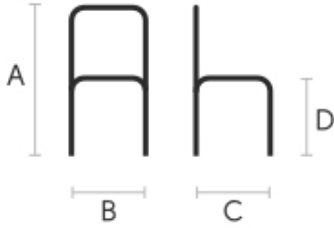
**Manhattan fabric**

13 Colors

**Yoredale fabric**

14 Colors

Dimensions



	cm	inch
A	80/88	31.5/34.07
B	65	25.6
C	62	25.4
D	45/53	17.7/20.9

Volumetric Details

Weight 11 Kg
Volume 0.26 mc
Package 1

Downloads

- [.3ds Sonny DS TS \(zip\)](https://www.midj.com/images/uploads/resources/3d-midj-sonny-dsts-3ds.zip) - <https://www.midj.com/images/uploads/resources/3d-midj-sonny-dsts-3ds.zip>
- [.3dobject Sonny DS TS \(zip\)](https://www.midj.com/images/uploads/resources/3d-midj-sonny-dsts-3dobject.zip) - <https://www.midj.com/images/uploads/resources/3d-midj-sonny-dsts-3dobject.zip>
- [.dwg Sonny DS TS \(zip\)](https://www.midj.com/images/uploads/resources/3d-midj-sonny-dsts-dwg.zip) - <https://www.midj.com/images/uploads/resources/3d-midj-sonny-dsts-dwg.zip>
- [.dxf Sonny DS TS \(zip\)](https://www.midj.com/images/uploads/resources/3d-midj-sonny-dsts-dxf.zip) - <https://www.midj.com/images/uploads/resources/3d-midj-sonny-dsts-dxf.zip>
- [.fbx Sonny DS TS \(zip\)](https://www.midj.com/images/uploads/resources/3d-midj-sonny-dsts-fbx.zip) - <https://www.midj.com/images/uploads/resources/3d-midj-sonny-dsts-fbx.zip>

Materials Certifications

Fiore leather

COMPOSITION: 100% leather

FIRE RESISTANCE:
 CAL TB-117 (2013, Sec. 1)
 BS 5852:1979
 BS EN 1021-1-2:2006

Fiore leather is a natural product and this is why it can show signs such as wrinkles, veining and scars that indicate the animal origin of the product. These signs, together with slightly color differences, are distinctive elements that enhance its beauty and distinguish it from faux leather or other artificial products. Fiore

is a bovine leather from animals of European origin, finished with water-based dyeing with resins and pigments. Fiore leather has the ability of improving with time and use, both in softness and shine.

Dust the leather product regularly with a soft and dry cloth. In case of stains, rub the affected area with a soft and clean cloth, moistened with water or to use a light solution of water and mild soap, to be applied gently with a wet cloth. Move the cloth in a circular direction, starting from edges of the stain towards the center. Rinse well with a damp cloth. Dry immediately after treatment. Avoid direct sunlight and exposure to heat sources.

We recommend that you always test the cleaning method on a hidden part of the item to check the resistance of the color.

These tips are cleaning recommendations and do not guarantee complete stain removal. In case of large



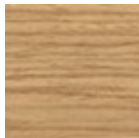
Sonny S L TS_N Chair

design Midj R&D, 2015

Chair with four leg frame in wood. Seat upholstered in leather, faux leather, fabric or custom's fabric. Available the version with backshell in quilted faux leather.

Colors and Materials

Structure

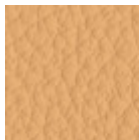


Stained ash veneered
10 Colors

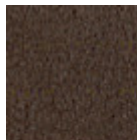


Veneered flamed walnut

Coating



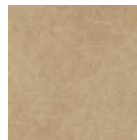
Fiore leather
21 Colors



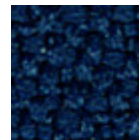
Vintage leather
8 Colors



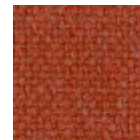
Secret faux leather
23 Colors



Vintage faux leather
12 Colors



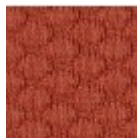
Mirage fabric
15 Colors



Cotton Club fabric
14 Colors



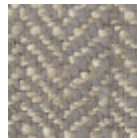
Fenix Wool fabric
16 Colors



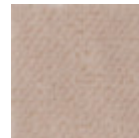
Visual fabric
13 Colors



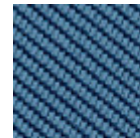
Main Line Flax fabric
16 Colors



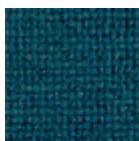
Second fabric
11 Colors



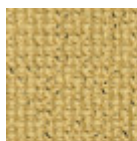
Velvet Superb
15 Colors



Tessuto Oceanic
13 Colors

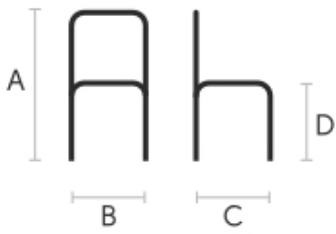


Manhattan fabric
13 Colors



Yoredale fabric
14 Colors

Dimensions



Volumetric Details

Weight 7.5 Kg
Volume 0.28 mc
Package 1

	cm	inch
A	77	30.3
B	52	20.5
C	58	22.8
D	47	18.5

Downloads

[.3ds Sonny S L TS_N \(zip\)](https://www.midj.com/images/uploads/resources/3d-midj-sonny-sltsn-3ds.zip) - <https://www.midj.com/images/uploads/resources/3d-midj-sonny-sltsn-3ds.zip>

[.3dobject Sonny S L TS_N \(zip\)](https://www.midj.com/images/uploads/resources/3d-midj-sonny-sltsn-3dobject.zip) - <https://www.midj.com/images/uploads/resources/3d-midj-sonny-sltsn-3dobject.zip>

[.dwg Sonny S L TS_N \(zip\)](https://www.midj.com/images/uploads/resources/3d-midj-sonny-sltsn-dwg.zip) - <https://www.midj.com/images/uploads/resources/3d-midj-sonny-sltsn-dwg.zip>

[.dxf Sonny S L TS_N \(zip\)](https://www.midj.com/images/uploads/resources/3d-midj-sonny-sltsn-dxf.zip) - <https://www.midj.com/images/uploads/resources/3d-midj-sonny-sltsn-dxf.zip>

[.fbx Sonny S L TS_N \(zip\)](https://www.midj.com/images/uploads/resources/3d-midj-sonny-sltsn-fbx.zip) - <https://www.midj.com/images/uploads/resources/3d-midj-sonny-sltsn-fbx.zip>

Materials Certifications

Stained ash veneered

Veneered woods are the result of a process of gluing extremely thin sheets of wood applied to various types of supports to produce furnishing elements, which have a similar appearance to solid wood, but with better performance in terms of resistance to woodworms, lightness and greater stability over time.

If exposed to light, and in any case with the passage of time, the color of the veneer changes. It may happen that furniture of the same color purchased after some time, show color differences. Upon request, the veneered parts can be supplied with certified origin from forests managed in a correct and responsible manner, according to the rigorous environmental standards established by the FSC circuit.

CLEANING AND MAINTENANCE

For ordinary cleaning of veneered woods, use a cloth moistened with neutral soap well diluted in water or specific products. Always dry after each application with a dry cloth or paper towel. Do not use abrasive products. In case of accidental spills of substances or liquids, immediately dab the wood with paper towel or with a dry and clean cloth. Avoid proximity to heat sources. Evenly expose the veneered woods to light, for example by periodically opening the table extensions that are stored inside the structure, or by moving any object placed on the surface, such as vases and accessories.

These tips are cleaning recommendations and do not guarantee complete stain removal.

We recommend that you always test the cleaning method on a hidden part of the item to check the resistance of the color.

Colour samples are to be considered approximate for each product. Slight color differences between a lot and the other are to be considered normal.

Materials Certifications

Veneered flamed walnut

Veneered woods are the result of a process of gluing extremely thin sheets of wood applied to various types of supports to produce furnishing elements, which have a similar appearance to solid wood, but with better performance in terms of resistance to woodworms, lightness and greater stability over time.

If exposed to light, and in any case with the passage of time, the color of the veneer changes. It may happen that furniture of the same color purchased after some time, show color differences. Upon request, the veneered parts can be supplied with certified origin from forests managed in a correct and responsible manner, according to the rigorous environmental standards established by the FSC circuit.

CLEANING AND MAINTENANCE

For ordinary cleaning of veneered woods, use a cloth moistened with neutral soap well diluted in water or



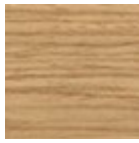
Sonny S L TS_R Chair

design Midj R&D, 2015

Chair with four leg frame in wood. Seat upholstered in leather, faux leather, fabric or custom's fabric. Available the version with backshell in quilted faux leather.

Colors and Materials

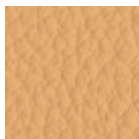
Structure



Lacquered ash

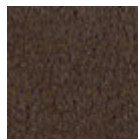
11 Colors

Coating



Fiore leather

21 Colors



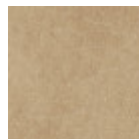
Vintage leather

8 Colors



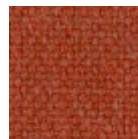
Secret faux leather

23 Colors



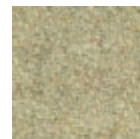
Vintage faux leather

12 Colors



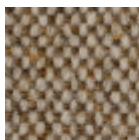
Cotton Club fabric

14 Colors



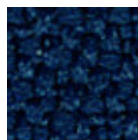
Fenix Wool fabric

16 Colors



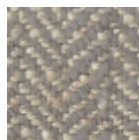
Main Line Flax fabric

16 Colors



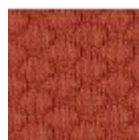
Mirage fabric

15 Colors



Second fabric

11 Colors



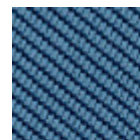
Visual fabric

13 Colors



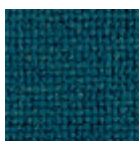
Velvet Superb

15 Colors



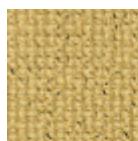
Tessuto Oceanic

13 Colors



Manhattan fabric

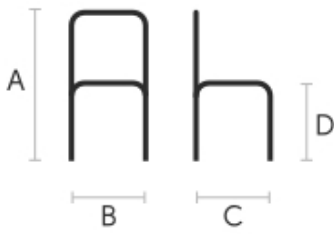
13 Colors



Yoredale fabric

14 Colors

Dimensions



Volumetric Details

Weight 7.5 Kg
Volume 0.28 mc
Package 1

	cm	inch
A	77	30.3
B	52	20.5
C	58	22.8
D	47	18.5

Downloads

[.3ds Sonny S L TS_R \(zip\)](https://www.midj.com/images/uploads/resources/3d-midj-sonny-sltsr-3ds.zip) - <https://www.midj.com/images/uploads/resources/3d-midj-sonny-sltsr-3ds.zip>

[.dwg Sonny S L TS_R \(zip\)](https://www.midj.com/images/uploads/resources/3d-midj-sonny-sltsr-dwg.zip) - <https://www.midj.com/images/uploads/resources/3d-midj-sonny-sltsr-dwg.zip>

[.3dobject Sonny S L TS_R \(zip\)](https://www.midj.com/images/uploads/resources/3d-midj-sonny-sltsr-3dobject.zip) - <https://www.midj.com/images/uploads/resources/3d-midj-sonny-sltsr-3dobject.zip>

[.dxf Sonny S L TS_R \(zip\)](https://www.midj.com/images/uploads/resources/3d-midj-sonny-sltsr-dxf.zip) - <https://www.midj.com/images/uploads/resources/3d-midj-sonny-sltsr-dxf.zip>

[.fbx Sonny S L TS_R \(zip\)](https://www.midj.com/images/uploads/resources/3d-midj-sonny-sltsr-fbx.zip) - <https://www.midj.com/images/uploads/resources/3d-midj-sonny-sltsr-fbx.zip>

Materials Certifications

Lacquered ash

Ash wood is durable material, with good resistance and flexibility. Thanks to its porosity, it is ideal to be lacquered. Its original color is quite light: it can range from light blond, to pink and pale brown, with possible shades of green. In our set of samples, it is available in the natural finish and in numerous color variations: from the classic wood effects to the most pop colors of the moment. The ash used for our materials is European.

CLEANING AND MAINTENANCE

Ash is an easy-to-clean wood: to remove dust or light stains, rub the surface with a soft cloth, if necessary moistened in a solution of hot water or white vinegar, to help eliminate stains without altering the beauty and shine of the wood. Always dry the surface. In addition, you can choose to use specific products for wooden furniture.

These tips are cleaning recommendations and do not guarantee complete stain removal. We recommend that you always test the cleaning method on a hidden part of the item to check the resistance of the color.

Colour samples are to be considered approximate for each product. Slight color differences between a lot and the other are to be considered normal.

Materials Certifications

Fiore leather

COMPOSITION: 100% leather

FIRE RESISTANCE:

CAL TB-117 (2013, Sec. 1)

BS 5852:1979

BS EN 1021-1-2:2006

Fiore leather is a natural product and this is why it can show signs such as wrinkles, veining and scars that indicate the animal origin of the product. These signs, together with slightly color differences, are distinctive elements that enhance its beauty and distinguish it from faux leather or other artificial products. Fiore

is a bovine leather from animals of European origin, finished with water-based dyeing with resins and pigments. Fiore leather has the ability of improving with time and use, both in softness and shine.

Dust the leather product regularly with a soft and dry cloth. In case of stains, rub the affected area with a



Sonny S M TS_M Chair

design Midj R&D, 2015

Armchair with four leg frame in lacquered or chrome steel. Seat upholstered in leather, ecoleather, fabric or custom's fabric. Available the version with backrest upholstered in different material.

Colors and Materials

Structure



White steel



Black steel



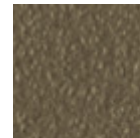
Sand steel



Brown steel



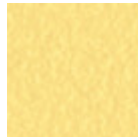
Grafite metal



Fango steel



Bronze metal



Pastel yellow steel



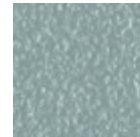
Ocher steel



Red steel



Sage green metal



Light blue metal



Ocean blue steel



Light grey steel



Facepowder pink metal



Chrome



Pink Gold

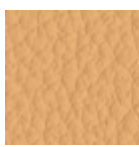


Black Nickel

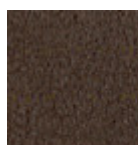


Golden bronze

Coating

**Fiore leather**

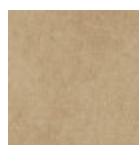
21 Colors

**Vintage leather**

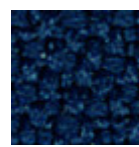
8 Colors

**Secret faux leather**

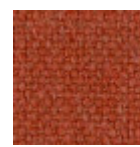
23 Colors

**Vintage faux leather**

12 Colors

**Mirage fabric**

15 Colors

**Cotton Club fabric**

14 Colors

**Fenix Wool fabric**

16 Colors

**Visual fabric**

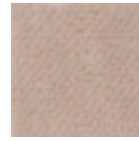
13 Colors

**Main Line Flax fabric**

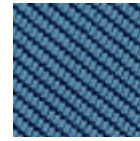
16 Colors

**Second fabric**

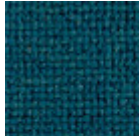
11 Colors

**Velvet Superb**

15 Colors

**Tessuto Oceanic**

13 Colors

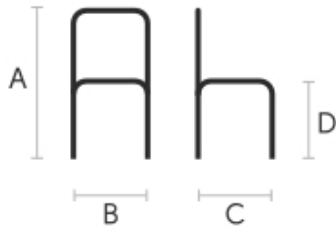
**Manhattan fabric**

13 Colors

**Yoredale fabric**

14 Colors

Dimensions



	cm	inch
A	77	30.3
B	52	20.5
C	58	22.8
D	47	18.5

Volumetric Details

Weight 7 Kg**Volume** 0.29 mc**Package** 1

Downloads

Sonny Catalog (pdf) - <https://www.midj.com/images/uploads/resources/sonny-danny-catalogo-2017.pdf>**.3ds Sonny S M TS_M (zip)** - <https://www.midj.com/images/uploads/resources/3d-midj-sonny-smtsm-3ds.zip>**.dwg Sonny S M TS_M (zip)** - <https://www.midj.com/images/uploads/resources/3d-midj-sonny-smtsm-dwg.zip>**.dxf Sonny S M TS_M (zip)** - <https://www.midj.com/images/uploads/resources/3d-midj-sonny-smtsm-dxf.zip>**.fbx Sonny S M TS_M (zip)** - <https://www.midj.com/images/uploads/resources/3d-midj-sonny-smtsm-fbx.zip>**.3dobject Sonny S M TS_M (zip)** - <https://www.midj.com/images/uploads/resources/3d-midj-sonny-smtsm-3dobject.zip>

Materials Certifications

Fiore leather

COMPOSITION: 100% leather

FIRE RESISTANCE:

CAL TB-117 (2013, Sec. 1)

BS 5852:1979

BS EN 1021-1-2:2006

Fiore leather is a natural product and this is why it can show signs such as wrinkles, veining and scars that indicate the animal origin of the product. These signs, together with slightly color differences, are distinctive elements that enhance its beauty and distinguish it from faux leather or other artificial products.

Fiore

is a bovine leather from animals of European origin, finished with water-based dyeing with resins and pigments. Fiore leather has the ability of improving with time and use, both in softness and shine.



Sonny S M TS_Q Chair

design Midj R&D, 2015

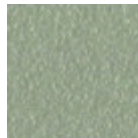
Chair with four square legs frame in lacquered steel. Shell upholstered in leather, ecoleather, fabric or custom's fabric. Available the version with backrest upholstered with quilted ecoleather.

Colors and Materials

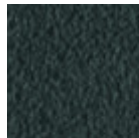
Structure



White steel



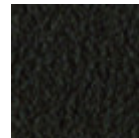
Sand steel



Grafite metal



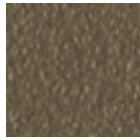
Bronze metal



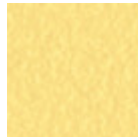
Brown steel



Black steel



Fango steel



Pastel yellow steel



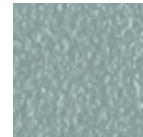
Ocher steel



Red steel



Sage green metal



Light blue metal



Ocean blue steel

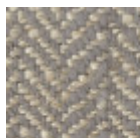


Facepowder pink metal

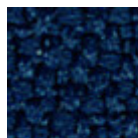


Light grey steel

Coating



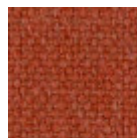
Second fabric
11 Colors



Mirage fabric
15 Colors



Fenix Wool fabric
16 Colors



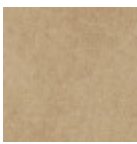
Cotton Club fabric
14 Colors



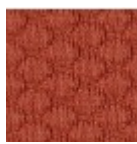
Velvet Superb
15 Colors



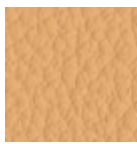
Secret faux leather
23 Colors

**Vintage faux leather**

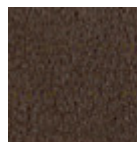
12 Colors

**Visual fabric**

13 Colors

**Fiore leather**

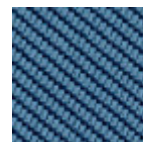
21 Colors

**Vintage leather**

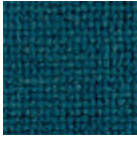
8 Colors

**Main Line Flax fabric**

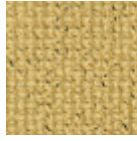
16 Colors

**Tessuto Oceanic**

13 Colors

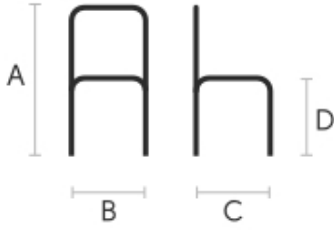
**Manhattan fabric**

13 Colors

**Yoredale fabric**

14 Colors

Dimensions



	cm	inch
A	77	30.3
B	52	20.5
C	58	22.8
D	47	18.5

Volumetric Details

Weight 9.5 Kg
Volume 0.29 mc
Package 1

Downloads

- [Sonny Catalog \(pdf\)](https://www.midj.com/images/uploads/resources/sonny-danny-catalogo-2017.pdf) - <https://www.midj.com/images/uploads/resources/sonny-danny-catalogo-2017.pdf>
- [.3dobject Sonny S M TS_Q \(zip\)](https://www.midj.com/images/uploads/resources/3d-midj-sonny-smtsq-3dobject.zip) - <https://www.midj.com/images/uploads/resources/3d-midj-sonny-smtsq-3dobject.zip>
- [.3ds Sonny S M TS_Q \(zip\)](https://www.midj.com/images/uploads/resources/3d-midj-sonny-smtsq-3ds.zip) - <https://www.midj.com/images/uploads/resources/3d-midj-sonny-smtsq-3ds.zip>
- [.dwg Sonny S M TS_Q \(zip\)](https://www.midj.com/images/uploads/resources/3d-midj-sonny-smtsq-dwg.zip) - <https://www.midj.com/images/uploads/resources/3d-midj-sonny-smtsq-dwg.zip>
- [.dxf Sonny S M TS_Q \(zip\)](https://www.midj.com/images/uploads/resources/3d-midj-sonny-smtsq-dxf.zip) - <https://www.midj.com/images/uploads/resources/3d-midj-sonny-smtsq-dxf.zip>
- [.fbx Sonny S M TS_Q \(zip\)](https://www.midj.com/images/uploads/resources/3d-midj-sonny-smtsq-fbx.zip) - <https://www.midj.com/images/uploads/resources/3d-midj-sonny-smtsq-fbx.zip>

Materials Certifications

Second fabric

COMPOSITION: 70% VI - 30% LI
MARTINDALE 20.000 cycles

FIRE RESISTANCE:
 Classe 1IM
 EN 1021 Part.1-2
 BS 5852 Crib 5
 M1
 Calif. Bull. 117 June 2013
 IMO 307 (88) Part.8

Second fabric is made of 100% viscose and linen, natural fibers that guarantee the highest safety standards in terms of fireproofing. Without formaldehyde and substance derived from chlorine and bromine,

Second is 100% natural. In the presence of fire, Second fabric carbonizes and creates a protective wall around flames, without melting, with a resistance above 1000°C (1832°F). Its processing gives it a particular herringbone pattern.

CLEANING AND MAINTENANCE

Regular cleaning is important to extend the life of the coating, and keep its appearance unchanged. Dust



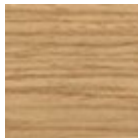
Sonny PB L TS_N Armchair

design Midj R&D, 2015

Armchair with low armrests. Lacquered wooden base, upholstered shell with leather, ecoleather, fabric or custom's fabric. Possibility to upholster the back face in a different material.

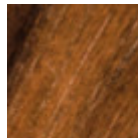
Colors and Materials

Structure



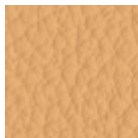
Stained ash veneered

10 Colors



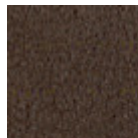
Veneered flamed walnut

Coating



Fiore leather

21 Colors



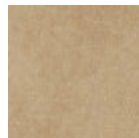
Vintage leather

8 Colors



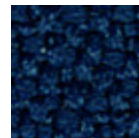
Secret faux leather

23 Colors



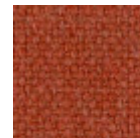
Vintage faux leather

12 Colors



Mirage fabric

15 Colors



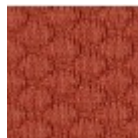
Cotton Club fabric

14 Colors



Fenix Wool fabric

16 Colors



Visual fabric

13 Colors



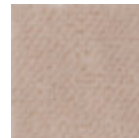
Main Line Flax fabric

16 Colors



Second fabric

11 Colors



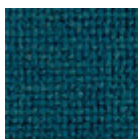
Velvet Superb

15 Colors



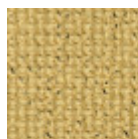
Tessuto Oceanic

13 Colors



Manhattan fabric

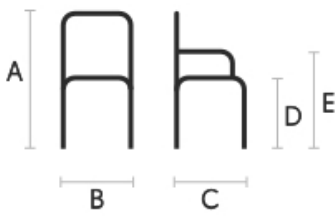
13 Colors



Yoredale fabric

14 Colors

Dimensions



Volumetric Details

Weight 7 Kg

Volume 0.31 mc

Package 1

	cm	inch
A	77	30.3
B	58	22.8
C	58	22.8
D	47	18.5
E	64	25.2

Downloads

[.3ds Sonny PB L TS_N \(zip\)](https://www.midj.com/images/uploads/resources/3d-midj-sonny-pbltsn-3ds.zip) - <https://www.midj.com/images/uploads/resources/3d-midj-sonny-pbltsn-3ds.zip>

[.3dobject Sonny PB L TS_N \(zip\)](https://www.midj.com/images/uploads/resources/3d-midj-sonny-pbltsn-3dobject.zip) - <https://www.midj.com/images/uploads/resources/3d-midj-sonny-pbltsn-3dobject.zip>

[.dwg Sonny PB L TS_N \(zip\)](https://www.midj.com/images/uploads/resources/3d-midj-sonny-pbltsn-dwg.zip) - <https://www.midj.com/images/uploads/resources/3d-midj-sonny-pbltsn-dwg.zip>

[.dxf Sonny PB L TS_N \(zip\)](https://www.midj.com/images/uploads/resources/3d-midj-sonny-pbltsn-dxf.zip) - <https://www.midj.com/images/uploads/resources/3d-midj-sonny-pbltsn-dxf.zip>

[.fbx Sonny PB L TS_N \(zip\)](https://www.midj.com/images/uploads/resources/3d-midj-sonny-pbltsn-fbx.zip) - <https://www.midj.com/images/uploads/resources/3d-midj-sonny-pbltsn-fbx.zip>

Materials Certifications

Stained ash veneered

Veneered woods are the result of a process of gluing extremely thin sheets of wood applied to various types of supports to produce furnishing elements, which have a similar appearance to solid wood, but with better performance in terms of resistance to woodworms, lightness and greater stability over time.

If exposed to light, and in any case with the passage of time, the color of the veneer changes. It may happen that furniture of the same color purchased after some time, show color differences. Upon request, the veneered parts can be supplied with certified origin from forests managed in a correct and responsible manner, according to the rigorous environmental standards established by the FSC circuit.

CLEANING AND MAINTENANCE

For ordinary cleaning of veneered woods, use a cloth moistened with neutral soap well diluted in water or specific products. Always dry after each application with a dry cloth or paper towel. Do not use abrasive products. In case of accidental spills of substances or liquids, immediately dab the wood with paper towel or with a dry and clean cloth. Avoid proximity to heat sources. Evenly expose the veneered woods to light, for example by periodically opening the table extensions that are stored inside the structure, or by moving any object placed on the surface, such as vases and accessories.

These tips are cleaning recommendations and do not guarantee complete stain removal.

We recommend that you always test the cleaning method on a hidden part of the item to check the resistance of the color.

Colour samples are to be considered approximate for each product. Slight color differences between a lot and the other are to be considered normal.

Materials Certifications

Veneered flamed walnut

Veneered woods are the result of a process of gluing extremely thin sheets of wood applied to various types of supports to produce furnishing elements, which have a similar appearance to solid wood, but with better performance in terms of resistance to woodworms, lightness and greater stability over time.

If exposed to light, and in any case with the passage of time, the color of the veneer changes. It may happen that furniture of the same color purchased after some time, show color differences. Upon request, the veneered parts can be supplied with certified origin from forests managed in a correct and responsible manner, according to the rigorous environmental standards established by the FSC circuit.

CLEANING AND MAINTENANCE

For ordinary cleaning of veneered woods, use a cloth moistened with neutral soap well diluted in water or



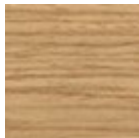
Sonny PB L TS_R Armchair

design Midj R&D, 2015

Armchair with low armrests. Lacquered wooden base, upholstered shell with leather, ecoleather, fabric or custom's fabric. Possibility to upholster the back face in a different material.

Colors and Materials

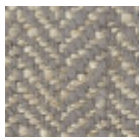
Structure



Lacquered ash

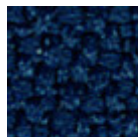
11 Colors

Coating



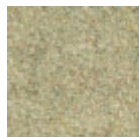
Second fabric

11 Colors



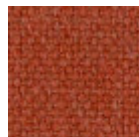
Mirage fabric

15 Colors



Fenix Wool fabric

16 Colors



Cotton Club fabric

14 Colors



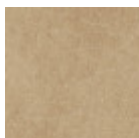
Velvet Superb

15 Colors



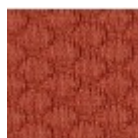
Secret faux leather

23 Colors



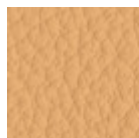
Vintage faux leather

12 Colors



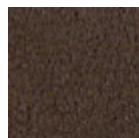
Visual fabric

13 Colors



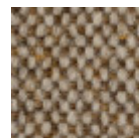
Fiore leather

21 Colors



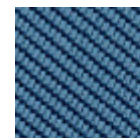
Vintage leather

8 Colors



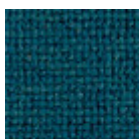
Main Line Flax fabric

16 Colors



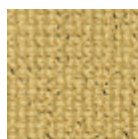
Tessuto Oceanic

13 Colors



Manhattan fabric

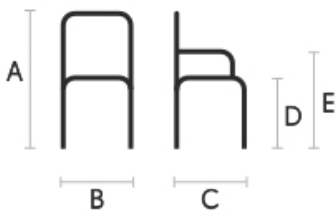
13 Colors



Yoredale fabric

14 Colors

Dimensions



Volumetric Details

Weight 7 Kg

Volume 0.31 mc

Package 1

	cm	inch
A	77	30.3
B	58	22.8
C	58	22.8
D	47	18.5
E	64	25.2

Downloads

[.3ds Sonny PB L TS_R \(zip\)](https://www.midj.com/images/uploads/resources/3d-midj-sonny-pbltsr-3ds.zip) - <https://www.midj.com/images/uploads/resources/3d-midj-sonny-pbltsr-3ds.zip>

[.3dobject Sonny PB L TS_R \(zip\)](https://www.midj.com/images/uploads/resources/3d-midj-sonny-pbltsr-3dobject.zip) - <https://www.midj.com/images/uploads/resources/3d-midj-sonny-pbltsr-3dobject.zip>

[.dwg Sonny PB L TS_R \(zip\)](https://www.midj.com/images/uploads/resources/3d-midj-sonny-pbltsr-dwg.zip) - <https://www.midj.com/images/uploads/resources/3d-midj-sonny-pbltsr-dwg.zip>

[.dxf Sonny PB L TS_R \(zip\)](https://www.midj.com/images/uploads/resources/3d-midj-sonny-pbltsr-dxf.zip) - <https://www.midj.com/images/uploads/resources/3d-midj-sonny-pbltsr-dxf.zip>

[.fbx Sonny PB L TS_R \(zip\)](https://www.midj.com/images/uploads/resources/3d-midj-sonny-pbltsr-fbx.zip) - <https://www.midj.com/images/uploads/resources/3d-midj-sonny-pbltsr-fbx.zip>

Materials Certifications

Lacquered ash

Ash wood is durable material, with good resistance and flexibility. Thanks to its porosity, it is ideal to be lacquered. Its original color is quite light: it can range from light blond, to pink and pale brown, with possible shades of green. In our set of samples, it is available in the natural finish and in numerous color variations: from the classic wood effects to the most pop colors of the moment. The ash used for our materials is European.

CLEANING AND MAINTENANCE

Ash is an easy-to-clean wood: to remove dust or light stains, rub the surface with a soft cloth, if necessary moistened in a solution of hot water or white vinegar, to help eliminate stains without altering the beauty and shine of the wood. Always dry the surface. In addition, you can choose to use specific products for wooden furniture.

These tips are cleaning recommendations and do not guarantee complete stain removal. We recommend that you always test the cleaning method on a hidden part of the item to check the resistance of the color.

Colour samples are to be considered approximate for each product. Slight color differences between a lot and the other are to be considered normal.

Materials Certifications

Second fabric

COMPOSITION: 70% VI - 30% LI

MARTINDALE 20.000 cycles

FIRE RESISTANCE:

Classe 1IM

EN 1021 Part.1-2

BS 5852 Crib 5

M1

Calif. Bull. 117 June 2013

IMO 307 (88) Part.8

Second fabric is made of 100% viscose and linen, natural fibers that guarantee the highest safety standards in terms of fireproofing. Without formaldehyde and substance derived from chlorine and bromine,

Second is 100% natural. In the presence of fire, Second fabric carbonizes and creates a protective wall



Sonny PB M TS_M Armchair

design Midj R&D, 2015

Armchair with four-legs base in steel. Seat upholstered in leather, faux leather or fabric. Possibility of covering front and back with different materials or colors.

Colors and Materials

Structure



White steel



Sand steel



Pastel yellow steel



Grafite metal



Black steel



Light blue metal



Ocean blue steel



Bronze metal



Fango steel



Light grey steel



Brown steel



Ocher steel



Facepowder pink metal



Red steel



Sage green metal



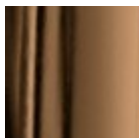
Chrome



Pink Gold



Black Nickel



Golden bronze

Coating



Cotton Club fabric

14 Colors



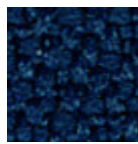
Fenix Wool fabric

16 Colors



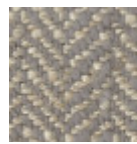
Main Line Flax fabric

16 Colors



Mirage fabric

15 Colors



Second fabric

11 Colors



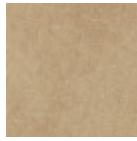
Visual fabric

13 Colors



Secret faux leather

23 Colors



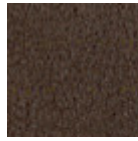
Vintage faux leather

12 Colors



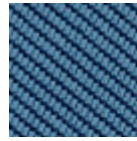
Fiore leather

21 Colors



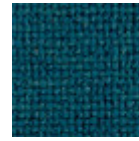
Vintage leather

8 Colors



Tessuto Oceanic

13 Colors



Manhattan fabric

13 Colors



Yoredale fabric

14 Colors

Dimensions



	cm	inch
A	77	30.3
B	58	22.8
C	58	22.8
D	47	18.5
E	64	25.2

Volumetric Details

Weight 7 Kg

Volume 0.31 mc

Package 1

Downloads

[.3dobject Sonny P M TS_M \(zip\)](https://www.midj.com/images/uploads/resources/3d-midj-sonny-pmtsm-3dobject.zip) - <https://www.midj.com/images/uploads/resources/3d-midj-sonny-pmtsm-3dobject.zip>

[.3ds Sonny P M TS_M \(zip\)](https://www.midj.com/images/uploads/resources/3d-midj-sonny-pmtsm-3ds.zip) - <https://www.midj.com/images/uploads/resources/3d-midj-sonny-pmtsm-3ds.zip>

[.dwg Sonny P M TS_M \(zip\)](https://www.midj.com/images/uploads/resources/3d-midj-sonny-pmtsm-dwg.zip) - <https://www.midj.com/images/uploads/resources/3d-midj-sonny-pmtsm-dwg.zip>

[.dxf Sonny P M TS_M \(zip\)](https://www.midj.com/images/uploads/resources/3d-midj-sonny-pmtsm-dxf.zip) - <https://www.midj.com/images/uploads/resources/3d-midj-sonny-pmtsm-dxf.zip>

[.fbx Sonny P M TS_M \(zip\)](https://www.midj.com/images/uploads/resources/3d-midj-sonny-pmtsm-fbx.zip) - <https://www.midj.com/images/uploads/resources/3d-midj-sonny-pmtsm-fbx.zip>

Materials Certifications

Cotton Club fabric

COMPOSITION: 70 % COT; 10% PES; 10% ACR; 10% AF

Abrasion resistance (Martindale) 100.000 cycles

Cotton Club by Flukso is a fabric made from latest generation regenerated cotton yarns. To create this fabric, specific fixing techniques were used, that give it and help maintaining a natural, slightly wavy and vibrated look.

CLEANING AND MAINTENANCE

Regular cleaning is important to extend the life of the coating, and keep its appearance unchanged. Dust and dirt can wear out the coating.

REGULAR CLEANING: vacuum frequently, at least once a week, at a power equal to half the device in use, choosing a smooth spout, without brushing.

STAIN REMOVAL: in case of slight stains, promptly clean the surface. Remove excess liquids or hard parts of dirt with a clean cloth, then proceed on the residue



Sonny PB M TS_Q Armchair

design Midj R&D, 2015

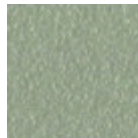
Armchair with four-legs base in steel. Seat upholstered in leather, faux leather or fabric. Possibility of covering front and back with different materials or colors.

Colors and Materials

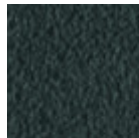
Structure



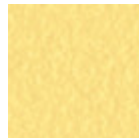
White steel



Sand steel



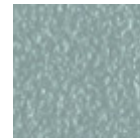
Grafite metal



Pastel yellow steel



Black steel



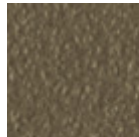
Light blue metal



Ocean blue steel



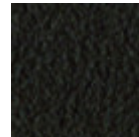
Bronze metal



Fango steel



Light grey steel



Brown steel



Ocher steel



Facepowder pink metal

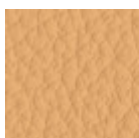


Red steel

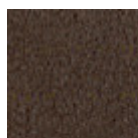


Sage green metal

Coating



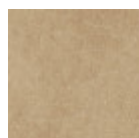
Fiore leather
21 Colors



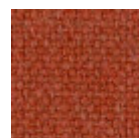
Vintage leather
8 Colors



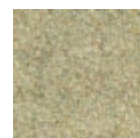
Secret faux leather
23 Colors



Vintage faux leather
12 Colors



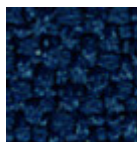
Cotton Club fabric
14 Colors



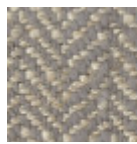
Fenix Wool fabric
16 Colors

**Main Line Flax fabric**

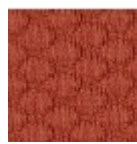
16 Colors

**Mirage fabric**

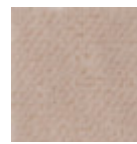
15 Colors

**Second fabric**

11 Colors

**Visual fabric**

13 Colors

**Velvet Superb**

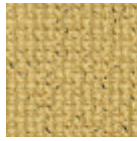
15 Colors

**Tessuto Oceanic**

13 Colors

**Manhattan fabric**

13 Colors

**Yoredale fabric**

14 Colors

Dimensions



	cm	inch
A	77	30.3
B	58	22.8
C	58	22.8
D	47	18.5
E	64	25.2

Volumetric Details

Weight 9.5 Kg**Volume** 0.31 mc**Package** 1

Downloads

[.3ds Sonny PB M TS_Q \(zip\)](https://www.midj.com/images/uploads/resources/3d-midj-sonny-pbmts-q-3ds.zip) - <https://www.midj.com/images/uploads/resources/3d-midj-sonny-pbmts-q-3ds.zip>[.3dobject Sonny PB M TS_Q \(zip\)](https://www.midj.com/images/uploads/resources/3d-midj-sonny-pbmts-q-3dobject.zip) - <https://www.midj.com/images/uploads/resources/3d-midj-sonny-pbmts-q-3dobject.zip>[.dwg Sonny PB M TS_Q \(zip\)](https://www.midj.com/images/uploads/resources/3d-midj-sonny-pbmts-q-dwg.zip) - <https://www.midj.com/images/uploads/resources/3d-midj-sonny-pbmts-q-dwg.zip>[.dxf Sonny PB M TS_Q \(zip\)](https://www.midj.com/images/uploads/resources/3d-midj-sonny-pbmts-q-dxf.zip) - <https://www.midj.com/images/uploads/resources/3d-midj-sonny-pbmts-q-dxf.zip>[.fbx Sonny PB M TS_Q \(zip\)](https://www.midj.com/images/uploads/resources/3d-midj-sonny-pbmts-q-fbx.zip) - <https://www.midj.com/images/uploads/resources/3d-midj-sonny-pbmts-q-fbx.zip>

Materials Certifications

Fiore leather

COMPOSITION: 100% leather

FIRE RESISTANCE:

CAL TB-117 (2013, Sec. 1)

BS 5852:1979

BS EN 1021-1-2:2006

Fiore leather is a natural product and this is why it can show signs such as wrinkles, veining and scars that indicate the animal origin of the product. These signs, together with slightly color differences, are distinctive elements that enhance its beauty and distinguish it from faux leather or other artificial products. Fiore

is a bovine leather from animals of European origin, finished with water-based dyeing with resins and pigments. Fiore leather has the ability of improving with time and use, both in softness and shine.

Dust the leather product regularly with a soft and dry cloth. In case of stains, rub the affected area with a soft and clean cloth, moistened with water or to use a light solution of water and mild soap, to be applied gently with a wet cloth. Move the cloth in a circular direction, starting from edges of the stain towards the center. Rinse well with a damp cloth. Dry immediately after treatment. Avoid direct sunlight and exposure to heat sources.

We recommend that you always test the cleaning method on a hidden part of the item to check the resistance of the color.

These tips are cleaning recommendations and do not guarantee complete stain removal. In case of large



Sonny PB MX TS Armchair

design Midj R&D, 2015

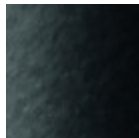
Swivel armchair with trestle base in lacquered steel. Shell upholstered in leather, ecoleather, fabric or custom's fabric.

Colors and Materials

Structure



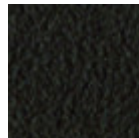
White steel



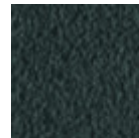
Black steel



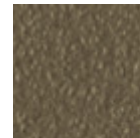
Sand steel



Brown steel



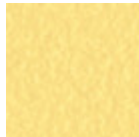
Grafite metal



Fango steel



Bronze metal



Pastel yellow steel



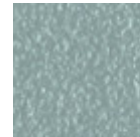
Ocher steel



Red steel



Sage green metal



Light blue metal



Ocean blue steel

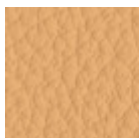


Light grey steel

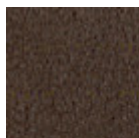


Facepowder pink
metal

Coating



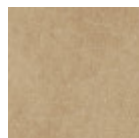
Fiore leather
21 Colors



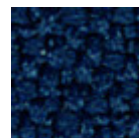
Vintage leather
8 Colors



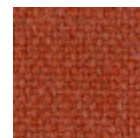
Secret faux leather
23 Colors



Vintage faux leather
12 Colors



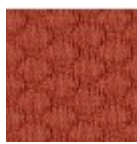
Mirage fabric
15 Colors



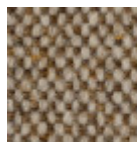
Cotton Club fabric
14 Colors

**Fenix Wool fabric**

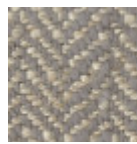
16 Colors

**Visual fabric**

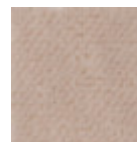
13 Colors

**Main Line Flax fabric**

16 Colors

**Second fabric**

11 Colors

**Velvet Superb**

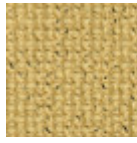
15 Colors

**Tessuto Oceanic**

13 Colors

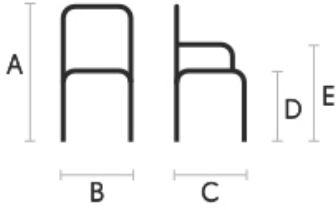
**Manhattan fabric**

13 Colors

**Yoredale fabric**

14 Colors

Dimensions



	cm	inch
A	75	29.5
B	57	22.4
C	59	23.2
D	47	18.5
E	64	25.2

Volumetric Details

Weight 12 Kg
Volume 0.32 mc
Package 1

Downloads

- [.3ds Sonny PB MX TS \(zip\)](https://www.midj.com/images/uploads/resources/3d-midj-sonny-pbmxts-3ds.zip) - <https://www.midj.com/images/uploads/resources/3d-midj-sonny-pbmxts-3ds.zip>
- [.3dobject Sonny PB MX TS \(zip\)](https://www.midj.com/images/uploads/resources/3d-midj-sonny-pbmxts-3dobject.zip) - <https://www.midj.com/images/uploads/resources/3d-midj-sonny-pbmxts-3dobject.zip>
- [.dwg Sonny PB MX TS \(zip\)](https://www.midj.com/images/uploads/resources/3d-midj-sonny-pbmxts-dwg.zip) - <https://www.midj.com/images/uploads/resources/3d-midj-sonny-pbmxts-dwg.zip>
- [.dxf Sonny PB MX TS \(zip\)](https://www.midj.com/images/uploads/resources/3d-midj-sonny-pbmxts-dxf.zip) - <https://www.midj.com/images/uploads/resources/3d-midj-sonny-pbmxts-dxf.zip>
- [.fbx Sonny PB MX TS \(zip\)](https://www.midj.com/images/uploads/resources/3d-midj-sonny-pbmxts-fbx.zip) - <https://www.midj.com/images/uploads/resources/3d-midj-sonny-pbmxts-fbx.zip>

Materials Certifications

Fiore leather

COMPOSITION: 100% leather

FIRE RESISTANCE:
 CAL TB-117 (2013, Sec. 1)
 BS 5852:1979
 BS EN 1021-1-2:2006

Fiore leather is a natural product and this is why it can show signs such as wrinkles, veining and scars that indicate the animal origin of the product. These signs, together with slightly color differences, are distinctive elements that enhance its beauty and distinguish it from faux leather or other artificial products. Fiore

is a bovine leather from animals of European origin, finished with water-based dyeing with resins and pigments. Fiore leather has the ability of improving with time and use, both in softness and shine.

Dust the leather product regularly with a soft and dry cloth. In case of stains, rub the affected area with a soft and clean cloth, moistened with water or to use a light solution of water and mild soap, to be applied gently with a wet cloth. Move the cloth in a circular direction, starting from edges of the stain towards the center. Rinse well with a damp cloth. Dry immediately after treatment. Avoid direct sunlight and exposure to heat sources.

We recommend that you always test the cleaning method on a hidden part of the item to check the resistance of the color.

These tips are cleaning recommendations and do not guarantee complete stain removal. In case of large



Sonny DPB TS Armchair

design Midj R&D, 2015

Task swivel chair with base in lacquered steel. Chair fitted with gas mechanism for height adjustment. Shell upholstered in leather, faux leather, fabric or custom's fabric.

Colors and Materials

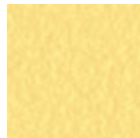
Structure



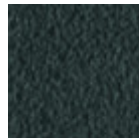
White steel



Sand steel



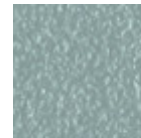
Pastel yellow steel



Grafite metal



Black steel



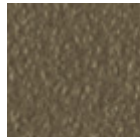
Light blue metal



Ocean blue steel



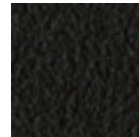
Bronze metal



Fango steel



Light grey steel



Brown steel



Ocher steel



Facepowder pink metal



Red steel

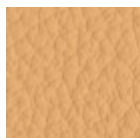


Sage green metal

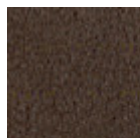


Chrome

Coating



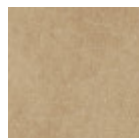
Fiore leather
21 Colors



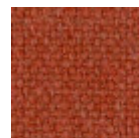
Vintage leather
8 Colors



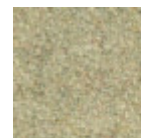
Secret faux leather
23 Colors



Vintage faux leather
12 Colors



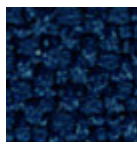
Cotton Club fabric
14 Colors



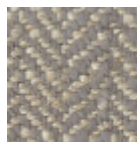
Fenix Wool fabric
16 Colors

**Main Line Flax fabric**

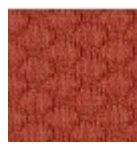
16 Colors

**Mirage fabric**

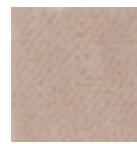
15 Colors

**Second fabric**

11 Colors

**Visual fabric**

13 Colors

**Velvet Superb**

15 Colors

**Tessuto Oceanic**

13 Colors

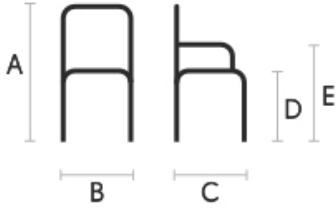
**Manhattan fabric**

13 Colors

**Yoredale fabric**

14 Colors

Dimensions



	cm	inch
A	80/88	31.5/34.7
B	65	25.6
C	62	24.4
D	45/53	17.7/20.9
E	64/72	25.2/28.3

Volumetric Details

Weight 6 Kg**Volume** 0.30 mc**Package** 1

Downloads

[.3ds Sonny DPB TS \(zip\)](https://www.midj.com/images/uploads/resources/3d-midj-Sonny-dpbts-3ds.zip) - <https://www.midj.com/images/uploads/resources/3d-midj-Sonny-dpbts-3ds.zip>[.3dobject Sonny DPB TS \(zip\)](https://www.midj.com/images/uploads/resources/3d-midj-Sonny-dpbts-3dobject.zip) - <https://www.midj.com/images/uploads/resources/3d-midj-Sonny-dpbts-3dobject.zip>[.dwg Sonny DPB TS \(zip\)](https://www.midj.com/images/uploads/resources/3d-midj-Sonny-dpbts-dwg.zip) - <https://www.midj.com/images/uploads/resources/3d-midj-Sonny-dpbts-dwg.zip>[.dxf Sonny DPB TS \(zip\)](https://www.midj.com/images/uploads/resources/3d-midj-Sonny-dpbts-dxf.zip) - <https://www.midj.com/images/uploads/resources/3d-midj-Sonny-dpbts-dxf.zip>[.fbx Sonny DPB TS \(zip\)](https://www.midj.com/images/uploads/resources/3d-midj-Sonny-dpbts-fbx.zip) - <https://www.midj.com/images/uploads/resources/3d-midj-Sonny-dpbts-fbx.zip>

Materials Certifications

Fiore leather

COMPOSITION: 100% leather

FIRE RESISTANCE:

CAL TB-117 (2013, Sec. 1)

BS 5852:1979

BS EN 1021-1-2:2006

Fiore leather is a natural product and this is why it can show signs such as wrinkles, veining and scars that indicate the animal origin of the product. These signs, together with slightly color differences, are distinctive elements that enhance its beauty and distinguish it from faux leather or other artificial products. Fiore

is a bovine leather from animals of European origin, finished with water-based dyeing with resins and pigments. Fiore leather has the ability of improving with time and use, both in softness and shine.

Dust the leather product regularly with a soft and dry cloth. In case of stains, rub the affected area with a soft and clean cloth, moistened with water or to use a light solution of water and mild soap, to be applied gently with a wet cloth. Move the cloth in a circular direction, starting from edges of the stain towards the center. Rinse well with a damp cloth. Dry immediately after treatment. Avoid direct sunlight and exposure to heat sources.

We recommend that you always test the cleaning method on a hidden part of the item to check the resistance of the color.

These tips are cleaning recommendations and do not guarantee complete stain removal. In case of large