



# Suite CT Ø55 Coffee Table

design AtelierNanni, 2017



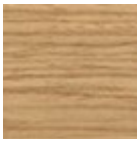
Suite coffee table with wooden three-leg base. Top in ceramic or upholstered in hide.

The round three-leg version is available with diameter Ø55 with different heights: H30, H40 and H50.

Alternatively, Suite coffee tables are available, in every height variant, in the square version 55x55 or rectangular version 70x35.

## Colors and Materials

### Structure



#### Lacquered ash

11 Colors

### Coating



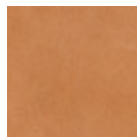
#### Hide

18 Colors



#### TK Hide

13 Colors

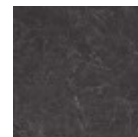


#### Tuscan hide

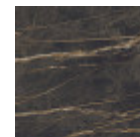
6 Colors



#### Glossy white calacatta ceramic

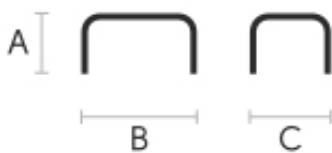


#### Glossy greek marble ceramic



#### Noir desir glossy marble ceramic

## Dimensions



	A (cm) (inch)	B (cm) (inch)	C (cm) (inch)
<b>Suite H30</b>	30	55	55
<b>Ø55 (cm)</b> (inch)	11.8	21.7	21.7

	A (cm)	B (cm)	C (cm)
	(inch)	(inch)	(inch)
<b>Suite H40</b>			
<b>Ø55 (cm)</b>	40	55	55
(inch)	15.7	21.7	21.7
<b>Suite H50</b>			
<b>Ø55 (cm)</b>	50	55	55
(inch)	19.7	21.7	21.7

## Volumetric Details

**Weight** 6 Kg

**Volume** 0.2 mc

**Package** 1

## Materials Certifications

### Lacquered ash

Ash wood is durable material, with good resistance and flexibility. Thanks to its porosity, it is ideal to be lacquered. Its original color is quite light: it can range from light blond, to pink and pale brown, with possible shades of green. In our set of samples, it is available in the natural finish and in numerous color variations: from the classic wood effects to the most pop colors of the moment. The ash used for our materials is European.

#### CLEANING AND MAINTENANCE

Ash is an easy-to-clean wood: to remove dust or light stains, rub the surface with a soft cloth, if necessary moistened in a solution of hot water or white vinegar, to help eliminate stains without altering the beauty and shine of the wood. Always dry the surface. In addition, you can choose to use specific products for wooden furniture.

These tips are cleaning recommendations and do not guarantee complete stain removal. We recommend that you always test the cleaning method on a hidden part of the item to check the resistance of the color.

Colour samples are to be considered approximate for each product. Slight color differences between a lot and the other are to be considered normal.

## Materials Certifications

### Hide

FIRE RESISTANCE:

CLASSE 1IM

BS 5852 1-2

Hide is hygienic and practical, wear resistant and breathable. It is obtained from skin of cattle raised for food purposes, and subsequently treated with chromium salts. Any imperfections on the hide surface are a natural feature that guarantee its originality.

#### CLEANING AND MAINTENANCE

Dust the surface regularly, with a dry and soft cloth. In case of stains, use only a non-abrasive damp cloth, and gently rub the area by moving the cloth in a circular direction starting from the edges of the stain towards the center. We recommend to act promptly: a delay could compromise the cleaning result. Do not use products that contain solvents or alcohol since they can damage the surface. Dry immediately after treatment. For a good conservation of the product, avoid direct sunlight, that can alter its characteristics and color, as well as exposure to heat sources.

We recommend that you always test the cleaning method on a hidden part of the item to check the resistance of the color. These tips are cleaning recommendations and do not guarantee complete stain removal.

Colour samples are to be considered approximate for each product. Slight color differences between a lot and the other are to be considered normal.

## Materials Certifications

### TK Hide

FIRE RESISTANCE:

CLASSE 1IM



# Suite CT 55x55 Coffee Table

design AtelierNanni, 2017



Suite coffee table with wooden four leg base. Top in ceramic or upholstered in hide.

In addition to the square 55x55 version, it is available the rectangular 70x35 version. The heights available for both versions are H30, H40 e H50.

Alternatively, Suite coffee tables are available, in every height variant, in the round three leg version Ø55.

## Colors and Materials

### Structure



#### Lacquered ash

11 Colors

### Coating



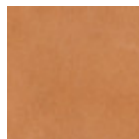
#### Hide

18 Colors



#### TK Hide

13 Colors



#### Tuscan hide

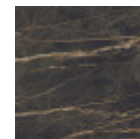
6 Colors



#### Glossy white calacatta ceramic

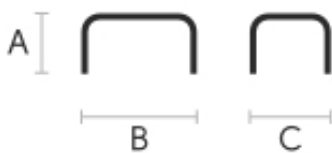


#### Glossy greek marble ceramic



#### Noir desir glossy marble ceramic

## Dimensions



	A (cm)	B (cm)	C (cm)
	(inch)	(inch)	(inch)
<b>Suite H30</b>	30	55	55
<b>55x55 (cm)</b>	11.8	21.7	21.7
	(inch)		

	A (cm)	B (cm)	C (cm)
	(inch)	(inch)	(inch)
<b>Suite H40</b>			
<b>55x55 (cm)</b>	40	55	55
(inch)	15.7	21.7	21.7
<b>Suite H50</b>			
<b>55x55 (cm)</b>	50	55	55
(inch)	19.7	21.7	21.7
<b>Suite H30</b>			
<b>70x35 (cm)</b>	30	70	35
(inch)	11.8	27.6	13.8
<b>Suite H40</b>			
<b>70x35 (cm)</b>	40	70	35
(inch)	15.7	27.6	13.8
<b>Suite H50</b>			
<b>70x35 (cm)</b>	50	70	35
(inch)	19.7	27.6	13.8

## Volumetric Details

**Weight** 6 Kg

**Volume** 0.2 mc

**Package** 1

## Materials Certifications

### Lacquered ash

Ash wood is durable material, with good resistance and flexibility. Thanks to its porosity, it is ideal to be lacquered. Its original color is quite light: it can range from light blond, to pink and pale brown, with possible shades of green. In our set of samples, it is available in the natural finish and in numerous color variations: from the classic wood effects to the most pop colors of the moment. The ash used for our materials is European.

#### CLEANING AND MAINTENANCE

Ash is an easy-to-clean wood: to remove dust or light stains, rub the surface with a soft cloth, if necessary moistened in a solution of hot water or white vinegar, to help eliminate stains without altering the beauty and shine of the wood. Always dry the surface. In addition, you can choose to use specific products for wooden furniture.

These tips are cleaning recommendations and do not guarantee complete stain removal. We recommend that you always test the cleaning method on a hidden part of the item to check the resistance of the color.

Colour samples are to be considered approximate for each product. Slight color differences between a lot and the other are to be considered normal.

## Materials Certifications

### Hide

**FIRE RESISTANCE:**

CLASSE 1IM

BS 5852 1-2

Hide is hygienic and practical, wear resistant and breathable. It is obtained from skin of cattle raised for food purposes, and subsequently treated with chromium salts. Any imperfections on the hide surface are a natural feature that guarantee its originality.

#### CLEANING AND MAINTENANCE

Dust the surface regularly, with a dry and soft cloth. In case of stains, use only a non-abrasive damp cloth, and gently rub the area by moving the cloth in a circular direction starting from the edges of the stain towards the center. We recommend to act promptly: a delay could compromise the cleaning result. Do not use products that contain solvents or alcohol since they can damage the surface. Dry immediately after treatment. For a good conservation of the product, avoid direct sunlight, that can alter its characteristics and color, as well as exposure to heat sources.

We recommend that you always test the cleaning method on a hidden part of the item to check the resistance of the color. These tips are cleaning recommendations and do not guarantee complete stain