



Trampoliere OUT H65 / H75 Stool

design Roberto Paoli, 2013

Trampoliere stool with four legs in lacquered steel is available in two different heights: 65 cm (25.6 in) and 75 cm (29.5 in).

The stool is stackable up to four units and suitable for outdoor use.

Colors and Materials

Structure



White steel



Black steel



Sand steel



Brown steel



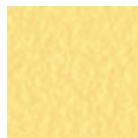
Grafite metal



Fango steel



Bronze metal



Pastel yellow steel



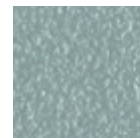
Ocher steel



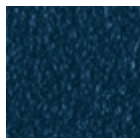
Red steel



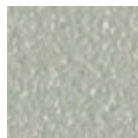
Sage green metal



Light blue metal



Ocean blue steel

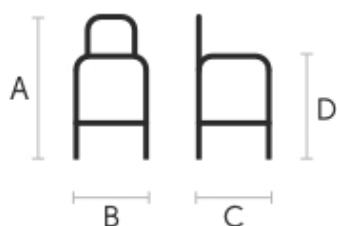


Light grey steel



Facepowder pink metal

Dimensions



A	B	C
(cm)	(cm)	(cm)
(inch)	(inch)	(inch)

H65	76	46	42	65
(cm)	29.9	18.1	16.5	25.6
(inch)				
H75	86	46	42	75
(cm)	33.9	18.1	16.5	29.5
(inch)				

Volumetric Details

Weight 8.1 Kg

Volume 0.2 mc

Package 1

Downloads

[3D Trampoliere \(zip\)](https://www.midj.com/images/uploads/resources/trampoliere-h65-h75-out-3d.zip) - <https://www.midj.com/images/uploads/resources/trampoliere-h65-h75-out-3d.zip>