



# Trampoliere H54 ø50

## Coffee Table

design Roberto Paoli, 2013

Trampoliere coffee table with three-star base in metal. Top in melamine or HPL.

Available in three variants: H34 Ø70, H44 Ø60, H54 Ø50.



### Colors and Materials

#### Structure



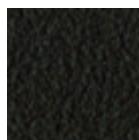
White steel



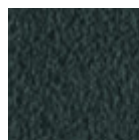
Black steel



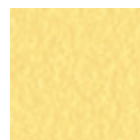
Sand steel



Brown steel



Grafite metal



Pastel yellow steel



Light blue metal



Ocean blue steel



Bronze metal



Fango steel



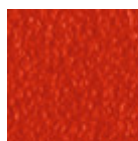
Light grey steel



Ocher steel



Facepowder pink  
metal

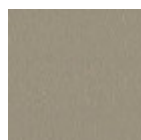


Red steel



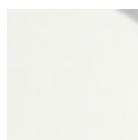
Sage green metal

#### Coating

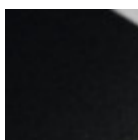


Melamine

8 Colors



White hpl black core



Black hpl



Hpl cemento

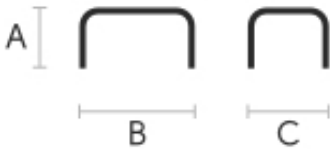


Hpl corten



White hpl white core

### Dimensions



**Volumetric Details**

**Weight** 14.5 Kg  
**Volume** 0.15 mc  
**Package** 2

	A (cm) (inch)	B (cm) (inch)	C (cm) (inch)
Trampoliere H54 (cm) (inch)	54 21.3	50 19.7	50 19.7
Trampoliere H34 (cm) (inch)	34 13.4	70 27.6	70 27.6
Trampoliere H44 (cm) (inch)	44 17.3	60 23.6	60 23.6



# Trampoliere H34 ø70 Coffee Table

design Roberto Paoli, 2013

Trampoliere coffee table with three-star base in metal. Top in melamine or HPL.

Available in three variants: H34 Ø70, H44 Ø60, H54 Ø50.

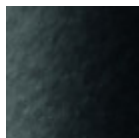


## Colors and Materials

### Structure



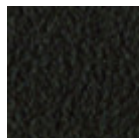
White steel



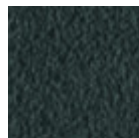
Black steel



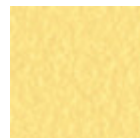
Sand steel



Brown steel



Grafite metal



Pastel yellow steel



Light blue metal



Ocean blue steel



Bronze metal



Fango steel



Light grey steel



Ocher steel



Facepowder pink  
metal

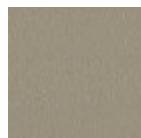


Red steel



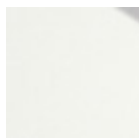
Sage green metal

### Coating

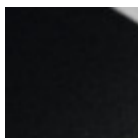


Melamine

8 Colors



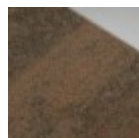
White hpl black core



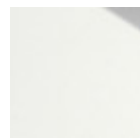
Black hpl



Hpl cemento

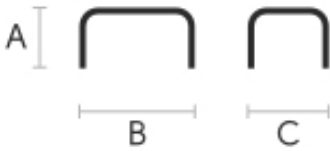


Hpl corten



White hpl white core

## Dimensions



**Volumetric Details**

**Weight** 15.5 Kg  
**Volume** 0.2 mc  
**Package** 2

	A (cm) (inch)	B (cm) (inch)	C (cm) (inch)
Trampoliere H34 (cm) (inch)	34 13.4	70 27.6	70 27.6
Trampoliere H44 (cm) (inch)	44 17.3	60 23.6	60 23.6
Trampoliere H54 (cm) (inch)	54 21.3	50 19.7	50 19.7



# Trampoliere H44 ø60

## Coffee Table

design Roberto Paoli, 2013

Trampoliere coffee table with three-star base in metal. Top in melamine or HPL.

Available in three variants: H34 Ø70, H44 Ø60, H54 Ø50.

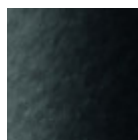


### Colors and Materials

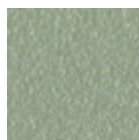
#### Structure



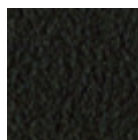
White steel



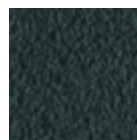
Black steel



Sand steel



Brown steel



Grafite metal



Pastel yellow steel



Light blue metal



Ocean blue steel



Bronze metal



Fango steel



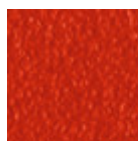
Light grey steel



Ocher steel



Facepowder pink  
metal

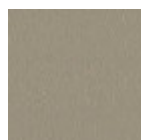


Red steel



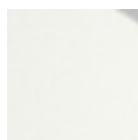
Sage green metal

#### Coating

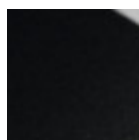


Melamine

8 Colors



White hpl black core



Black hpl



Hpl cemento

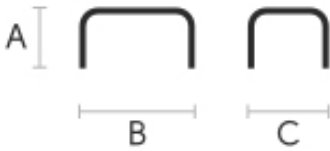


Hpl corten



White hpl white core

### Dimensions



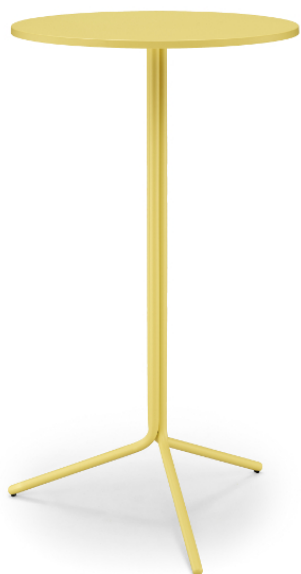
## Volumetric Details

**Weight** 13.5 Kg

**Volume** 0.16 mc

**Package** 2

	A (cm) (inch)	B (cm) (inch)	C (cm) (inch)
Trampoliere H44 (cm) (inch)	44 17.3	60 23.6	60 23.6
Trampoliere H34 (cm) (inch)	34 13.4	70 27.6	70 27.6
Trampoliere H54 (cm) (inch)	54 21.3	50 19.7	50 19.7



# Trampoliere H107 Bistro Table

design Roberto Paoli, 2013

Table with 3-pointed base in lacquered or chromed steel. The lacquered version can be used outdoors.

Maximum tray size 80x80 cm (31.5x31.5 in) or ø90 cm (35.4 in).

## Colors and Materials

### Structure



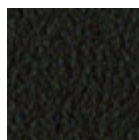
Chrome



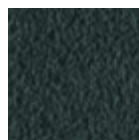
White steel



Sand steel



Brown steel



Grafite metal



Black steel



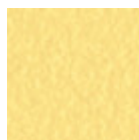
Facepowder pink metal



Fango steel



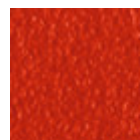
Bronze metal



Pastel yellow steel



Ocher steel



Red steel



Sage green metal

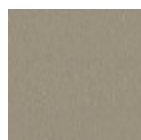


Light blue metal

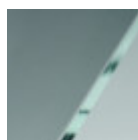


Ocean blue steel

### Coating



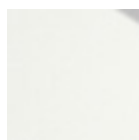
Melamine  
8 Colors



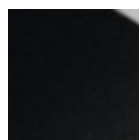
Transparent glass



Extra clear glossy  
white glass



White hpl black core



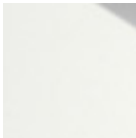
Black hpl



Hpl cemento

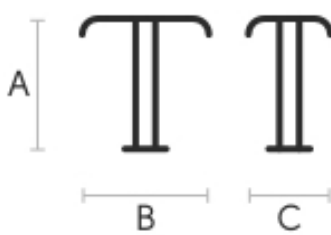


Hpl corten



White hpl white core

## Dimensions



	A	B	C
	(cm)	(cm)	(cm)
	(inch)	(inch)	(inch)
Trampoliere	107	50	50
(cm)	42.1	19.7	19.7
(inch)			

## Volumetric Details

Weight 11.5 Kg  
Volume 0.27 mc  
Package 2

## Materials Certifications

### Transparent glass

Tempered glass tops are elegant and shiny. The interaction with the surrounding light enhances their brilliance and increases their timeless charm.

Tempered glass is glass that has been subjected to a special treatment that involves gradual heating, followed by sudden air cooling. This procedure allows the transformation into a more resistant and safer glass, as, in case of breakage, it will shatter into small harmless fragments. Tops in tempered glass may have slight scratches due to sliding on the oven rollers. In addition, any dots and rings on the surface, visible in light or backlight conditions, prove that the tempera process has been carried out.

### CLEANING AND MAINTENANCE

Glass tops do not require any particular maintenance, and cleaning is simple and effective. In general, for daily cleaning, use a specific microfiber cloth moistened with hot water or detergents formulated for glass surfaces. For stubborn stains, use non-abrasive cleaning products or detergents. To remove any dried residues deposited on the surface, proceed with the use of a wooden or plastic scraper. Do not use rough or abrasive sponges. For all tops we recommend avoiding direct contact with sharp or pointed tools, as well as avoid placing very cold or very hot containers directly on the glass tops. These tips are cleaning recommendations and do not guarantee complete stain removal. We recommend that you always test the cleaning method on a hidden part of the item to check the resistance of the material.

Colour samples are to be considered approximate for each product. Slight color differences between a lot and the other are to be considered normal.

## Materials Certifications

### Extra clear glossy white glass

Tempered glass tops are elegant and shiny. The interaction with the surrounding light enhances their brilliance and increases their timeless charm.

Tempered glass is glass that has been subjected to a special treatment that involves gradual heating, followed by sudden air cooling. This procedure allows the transformation into a more resistant and safer glass, as, in case of breakage, it will shatter into small harmless fragments. Tops in tempered glass may have slight scratches due to sliding on the oven rollers. In addition, any dots and rings on the surface, visible in light or backlight conditions, prove that the tempera process has been carried out.





# Trampoliere H73 Bistro Table

design Roberto Paoli, 2013

Table with 3-pointed base in lacquered or chromed steel. The version with lacquered structure can be used outdoors.

Maximum tray size 80x80 cm (31.5x31.5 in) or ø90 cm (35.4 in).



## Colors and Materials

### Structure



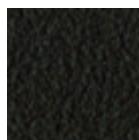
Chrome



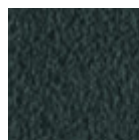
White steel



Sand steel



Brown steel



Grafite metal



Black steel



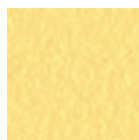
Facepowder pink metal



Fango steel



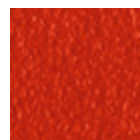
Bronze metal



Pastel yellow steel



Ocher steel



Red steel



Sage green metal

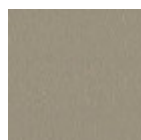


Light blue metal

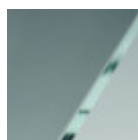


Ocean blue steel

### Coating



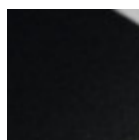
Melamine  
8 Colors



Transparent glass



Extra clear glossy  
white glass



Black hpl



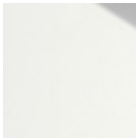
White hpl black core



Hpl cemento

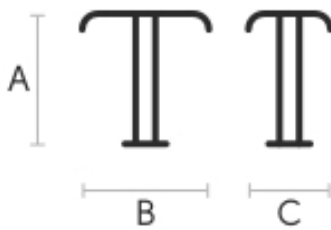


Hpl corten



White hpl white core

## Dimensions



	A	B	C
	(cm)	(cm)	(cm)
	(inch)	(inch)	(inch)
Trampoline			
H73 (cm)	73	50	50
(inch)	28.7	19.7	19.7

## Materials Certifications

### Transparent glass

Tempered glass tops are elegant and shiny. The interaction with the surrounding light enhances their brilliance and increases their timeless charm.

Tempered glass is glass that has been subjected to a special treatment that involves gradual heating, followed by sudden air cooling. This procedure allows the transformation into a more resistant and safer glass, as, in case of breakage, it will shatter into small harmless fragments. Tops in tempered glass may have slight scratches due to sliding on the oven rollers. In addition, any dots and rings on the surface, visible in light or backlight conditions, prove that the tempera process has been carried out.

### CLEANING AND MAINTENANCE

Glass tops do not require any particular maintenance, and cleaning is simple and effective. In general, for daily cleaning, use a specific microfiber cloth moistened with hot water or detergents formulated for glass surfaces. For stubborn stains, use non-abrasive cleaning products or detergents. To remove any dried residues deposited on the surface, proceed with the use of a wooden or plastic scraper. Do not use rough or abrasive sponges. For all tops we recommend avoiding direct contact with sharp or pointed tools, as well as avoid placing very cold or very hot containers directly on the glass tops. These tips are cleaning recommendations and do not guarantee complete stain removal. We recommend that you always test the cleaning method on a hidden part of the item to check the resistance of the material.

Colour samples are to be considered approximate for each product. Slight color differences between a lot and the other are to be considered normal.

## Materials Certifications

### Extra clear glossy white glass

Tempered glass tops are elegant and shiny. The interaction with the surrounding light enhances their brilliance and increases their timeless charm.

Tempered glass is glass that has been subjected to a special treatment that involves gradual heating, followed by sudden air cooling. This procedure allows the transformation into a more resistant and safer glass, as, in case of breakage, it will shatter into small harmless fragments. Tops in tempered glass may have slight scratches due to sliding on the oven rollers. In addition, any dots and rings on the surface, visible in light or backlight conditions, prove that the tempera process has been carried out.