



# Woody extendable

## Extendable Table

design Midj R&D, 2022

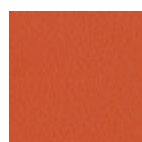


Extendable Woody table with four-legged base in stained ash wood with lacquered metal core. Metal structure. Top in veneered wood, fenix, laminate, crystalceramic or glass. Extensions in veneered wood, fenix or laminate with manual mechanism, semi-automatic folding mechanism for 140/200x140 versions.

Woody table is also available in the fixed 140x90 and 160x90 versions, also with the 105 cm (41.3 in) height.

### Colors and Materials

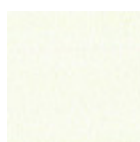
#### Structure



Papaya orange steel



Light blue metal



White steel



Ocean blue steel



Bronze metal



Sand steel



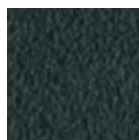
Fango steel



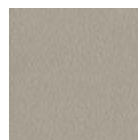
Golden yellow metal



Pastel yellow steel



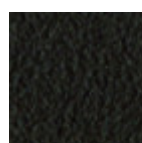
Grafite metal



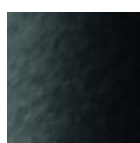
Ash grey metal



Light grey steel



Brown steel



Black steel



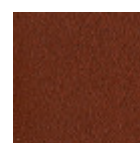
Ocher steel



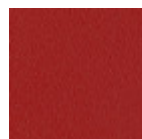
Facepowder pink metal



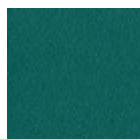
Red steel



Bulgaro red metal



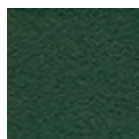
Cherry red metal



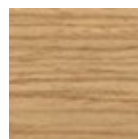
Pine green steel



Sage green metal



Dark green metal



Lacquered ash

11 Colors

#### Coating



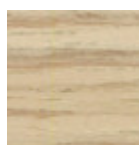
**Laminate**  
6 Colors



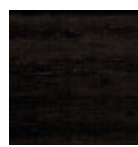
**Fenix laminate**  
2 Colors



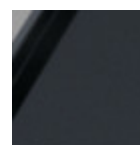
**White lacquered veneered ash**



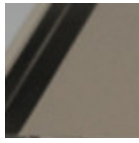
**Veneered ash natural finish**



**Black lacquered veneered ash**



**Matt graphite antiscratch glass**



**Matt sand antiscratch glass**



**Extra clear matt white antiscratch glass**



**Extraclear glossy white glass**



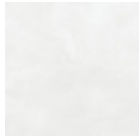
**Extra clear glassy cherry red glass**



**Charcoal savoia crystalceramic**

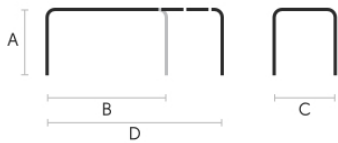


**Cement savoia crystalceramic**



**Lime white crystalceramic**

## Dimensions



|  | A<br>(cm)<br>(inch) | B<br>(cm)<br>(inch) | C<br>(cm)<br>(inch) | D<br>(cm)<br>(inch) |
|--|---------------------|---------------------|---------------------|---------------------|
| <b>120/170x80</b><br>(cm)<br>(inch)      | 75<br>29.5          | 120<br>47.2         | 80<br>31.5          | 170<br>66.9         |
| <b>140/190/240x90</b><br>(cm)<br>(inch)  | 75<br>29.5          | 140<br>55.1         | 90<br>35.4          | 240<br>94.5         |
| <b>140/200x140</b><br>(cm)<br>(inch)     | 75<br>29.5          | 140<br>55.1         | 140<br>55.1         | 200<br>78.7         |
| <b>160/210/260/310</b><br>(cm)<br>(inch) | 75<br>29.5          | 160<br>63           | 90<br>35.4          | 310<br>122          |
| <b>180/230/280x100</b><br>(cm)<br>(inch) | 75<br>29.5          | 180<br>70.9         | 100<br>39.4         | 280<br>110.2        |

## Materials Certifications

### Dark green metal

The technologies used in the previous phase of powder coating play a fundamental role in the final result of the processing. They are in fact essential to increase adherence paint on the metal surface and then guarantee its duration over time. The metal frames, following a total cleaning of the surface, pass through chemical conversion processes, creating a compact base that allows for better adhesion of the subsequent treatment. In the last phase the object subjected to the powder coating process is placed in a polymerization oven, going to form an adherent and extremely tight layer durable. This particular paint job is ideal for outdoor use.

To clean the surface, use a damp microfiber cloth with neutral soap or specific metal cleaning products. Avoid hitting or rubbing the surface with sharp objects. Do not use scourers or other abrasive materials,



# Woody fixed Table

design Midj R&D, 2022



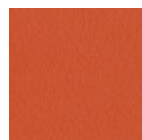
Woody fixed table with four-legged base in stained ash wood with lacquered metal core. Metal structure. Top in veneered wood, fenix, laminate, crystalceramic or glass.

Woody table in 140x90 and 160x90 versions is also available in the 105 cm (41.3 in) height.

Available in the extendable version.

## Colors and Materials

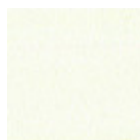
### Structure



Papaya orange steel



Light blue metal



White steel



Ocean blue steel



Bronze metal



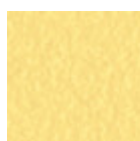
Sand steel



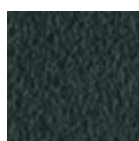
Fango steel



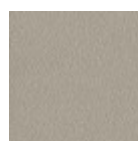
Golden yellow metal



Pastel yellow steel



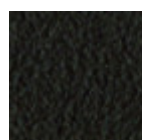
Grafite metal



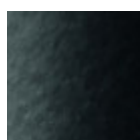
Ash grey metal



Light grey steel



Brown steel



Black steel



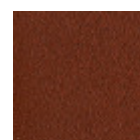
Ocher steel



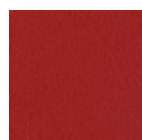
Facepowder pink metal



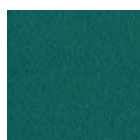
Red steel



Bulgaro red metal



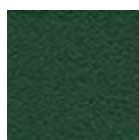
Cherry red metal



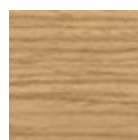
Pine green steel



Sage green metal



Dark green metal



Lacquered ash

11 Colors

### Coating



Laminate

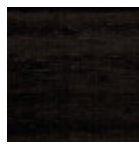
6 Colors



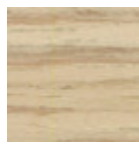
**Fenix laminate**  
2 Colors



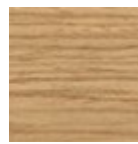
**White lacquered veneered ash**



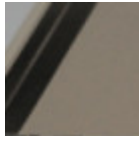
**Black lacquered veneered ash**



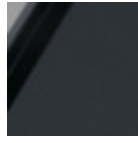
**Veneered ash natural finish**



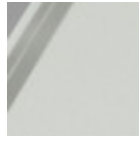
**Stained ash veneered**  
10 Colors



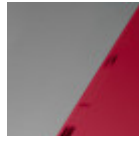
**Matt sand antiscratch glass**



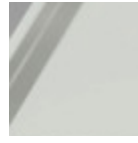
**Matt graphite antiscratch glass**



**Extra clear matt white antiscratch glass**



**Extra clear glassy cherry red glass**



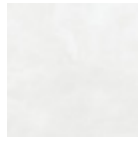
**Extraclear glossy white glass**



**Charcoal savoia crystalceramic**



**Cement savoia crystalceramic**



**Lime white crystalceramic**

## Dimensions



|                               | <b>A (cm)</b><br>(inch) | <b>B (cm)</b><br>(inch) | <b>C (cm)</b><br>(inch) |
|-------------------------------|-------------------------|-------------------------|-------------------------|
| <b>120x80 (cm)</b><br>(inch)  | 75<br>29.5              | 120<br>47.2             | 80<br>31.5              |
| <b>140x90 (cm)</b><br>(inch)  | 75<br>29.5              | 140<br>55.1             | 90<br>35.4              |
| <b>140x140 (cm)</b><br>(inch) | 75<br>29.5              | 140<br>55.1             | 140<br>55.1             |
| <b>160x90 (cm)</b><br>(inch)  | 75<br>29.5              | 160<br>63               | 90<br>35.4              |
| <b>180x100 (cm)</b><br>(inch) | 75<br>29.5              | 180<br>70.9             | 100<br>39.4             |

## Materials Certifications

### Dark green metal

The technologies used in the previous phase of powder coating play a fundamental role in the final result of the processing. They are in fact essential to increase adherence paint on the metal surface and then guarantee its duration over time. The metal frames, following a total cleaning of the surface, pass through chemical conversion processes, creating a compact base that allows for better adhesion of the subsequent treatment. In the last phase the object subjected to the powder coating process is placed in a polymerization oven, going to form an adherent and extremely tight layer durable. This particular paint job is ideal for outdoor use.

To clean the surface, use a damp microfiber cloth with neutral soap or specific metal cleaning products. Avoid hitting or rubbing the surface with sharp objects. Do not use scourers or other abrasive materials, since they would inevitably scratch the surface. Do not leave rusty iron objects on the surface for too long.

These surface treatments are not suitable for outdoor use, but they guarantee excellent resistance to



# Woody H105 Table

design Midj R&D, 2022

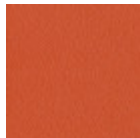


Woody fixed table with four-legged base in stained ash wood with lacquered metal core. Metal structure. Top in veneered wood, fenix, laminate, crystalceramic or glass.

Available in the 140x90 and 160x90 version with 105 cm height (41.3 in).

## Colors and Materials

### Structure



Papaya orange steel



Light blue metal



White steel



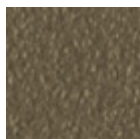
Ocean blue steel



Bronze metal



Sand steel



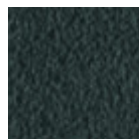
Fango steel



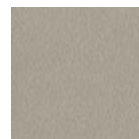
Golden yellow metal



Pastel yellow steel



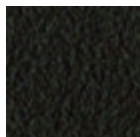
Grafite metal



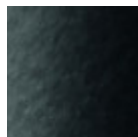
Ash grey metal



Light grey steel



Brown steel



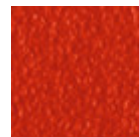
Black steel



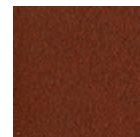
Ocher steel



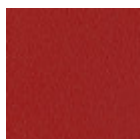
Facepowder pink metal



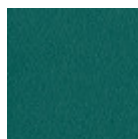
Red steel



Bulgaro red metal



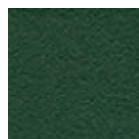
Cherry red metal



Pine green steel



Sage green metal



Dark green metal



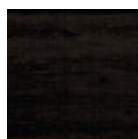
Lacquered ash

11 Colors

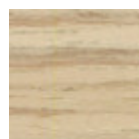
### Coating



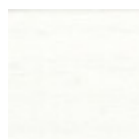
Laminate  
6 Colors



Black lacquered  
veneered ash



Veneered ash  
natural finish



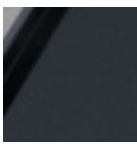
White lacquered  
veneered ash



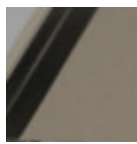
White fenix



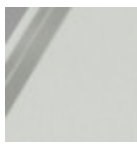
Black fenix



**Matt graphite antiscratch glass**



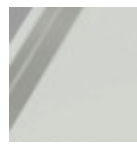
**Matt sand antiscratch glass**



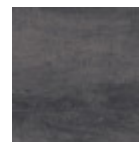
**Extra clear matt white antiscratch glass**



**Extra clear glassy cherry red glass**



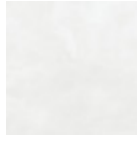
**Extraclear glossy white glass**



**Charcoal savoia crystalceramic**



**Cement savoia crystalceramic**



**Lime white crystalceramic**

## Dimensions



|                  | A (cm)<br>(inch) | B (cm)<br>(inch) | C (cm)<br>(inch) |
|------------------|------------------|------------------|------------------|
| <b>140x90</b>    |                  |                  |                  |
| <b>H105 (cm)</b> | 105              | 140              | 90               |
| (inch)           | 41.3             | 55.1             | 35.4             |
| <b>160x90</b>    |                  |                  |                  |
| <b>H105 (cm)</b> | 105              | 160              | 90               |
| (inch)           | 41.3             | 63               | 35.4             |

## Materials Certifications

### Dark green metal

The technologies used in the previous phase of powder coating play a fundamental role in the final result of the processing. They are in fact essential to increase adherence paint on the metal surface and then guarantee its duration over time. The metal frames, following a total cleaning of the surface, pass through chemical conversion processes, creating a compact base that allows for better adhesion of the subsequent treatment. In the last phase the object subjected to the powder coating process is placed in a polymerization oven, going to form an adherent and extremely tight layer durable. This particular paint job is ideal for outdoor use.

To clean the surface, use a damp microfiber cloth with neutral soap or specific metal cleaning products. Avoid hitting or rubbing the surface with sharp objects. Do not use scourers or other abrasive materials, since they would inevitably scratch the surface. Do not leave rusty iron objects on the surface for too long.

These surface treatments are not suitable for outdoor use, but they guarantee excellent resistance to frequent use, dirt and dust.

## Materials Certifications

### Lacquered ash

Ash wood is durable material, with good resistance and flexibility. Thanks to its porosity, it is ideal to be lacquered. Its original color is quite light: it can range from light blond, to pink and pale brown, with possible shades of green. In our set of samples, it is available in the natural finish and in numerous color variations: from the classic wood effects to the most pop colors of the moment. The ash used for our materials is European.

### CLEANING AND MAINTENANCE

Ash is an easy-to-clean wood: to remove dust or light stains, rub the surface with a soft cloth, if necessary moistened in a solution of hot water or white vinegar, to help eliminate stains without altering the beauty