



Wrap S M TS Chair

design Balutto Associati, 2016

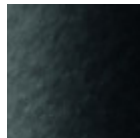
Wrap chair with four legs base in lacquered steel. Shell upholstered in leather, ecoleather, fabric or custom's fabric.

Colors and Materials

Structure



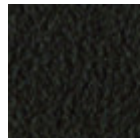
White steel



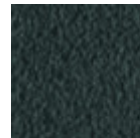
Black steel



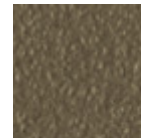
Sand steel



Brown steel



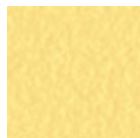
Grafite metal



Fango steel



Bronze metal



Pastel yellow steel



Ocher steel



Red steel



Sage green metal



Light blue metal



Ocean blue steel

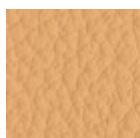


Light grey steel

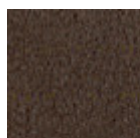


Facepowder pink metal

Coating



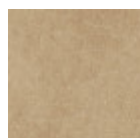
Fiore leather
21 Colors



Vintage leather
8 Colors



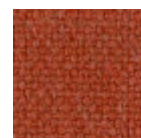
Secret faux leather
23 Colors



Vintage faux leather
12 Colors



Mirage fabric
15 Colors



Cotton Club fabric
14 Colors

**Fenix Wool fabric**

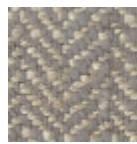
16 Colors

**Visual fabric**

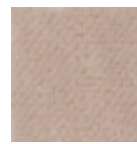
13 Colors

**Main Line Flax fabric**

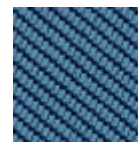
16 Colors

**Second fabric**

11 Colors

**Velvet Superb**

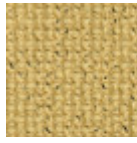
15 Colors

**Tessuto Oceanic**

13 Colors

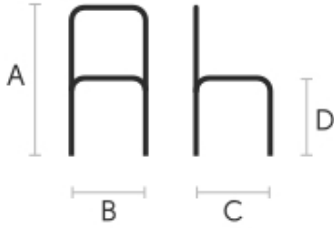
**Manhattan fabric**

13 Colors

**Yoredale fabric**

14 Colors

Dimensions



	cm	inch
A	79	31.1
B	47	18.5
C	58	22.8
D	47	18.5

Volumetric Details

Weight 8.4 Kg**Volume** 0.41 mc**Package** 1

Downloads

[.3ds Wrap S M TS \(zip\)](https://www.midj.com/images/uploads/resources/3d-midj-wrap-s-m-ts-3ds.zip) - <https://www.midj.com/images/uploads/resources/3d-midj-wrap-s-m-ts-3ds.zip>[.dae Wrap S M TS \(zip\)](https://www.midj.com/images/uploads/resources/3d-midj-wrap-s-m-ts-dae.zip) - <https://www.midj.com/images/uploads/resources/3d-midj-wrap-s-m-ts-dae.zip>[.dwg Wrap S M TS \(zip\)](https://www.midj.com/images/uploads/resources/3d-midj-wrap-s-m-ts-dwg.zip) - <https://www.midj.com/images/uploads/resources/3d-midj-wrap-s-m-ts-dwg.zip>[.dxf Wrap S M TS \(zip\)](https://www.midj.com/images/uploads/resources/3d-midj-wrap-s-m-ts-dxf.zip) - <https://www.midj.com/images/uploads/resources/3d-midj-wrap-s-m-ts-dxf.zip>[.obj Wrap S M TS \(zip\)](https://www.midj.com/images/uploads/resources/3d-midj-wrap-s-m-ts-obj.zip) - <https://www.midj.com/images/uploads/resources/3d-midj-wrap-s-m-ts-obj.zip>[.stl Wrap S M TS \(zip\)](https://www.midj.com/images/uploads/resources/3d-midj-wrap-s-m-ts-stl.zip) - <https://www.midj.com/images/uploads/resources/3d-midj-wrap-s-m-ts-stl.zip>

Materials Certifications

Fiore leather

COMPOSITION: 100% leather

FIRE RESISTANCE:

CAL TB-117 (2013, Sec. 1)

BS 5852:1979

BS EN 1021-1-2:2006

Fiore leather is a natural product and this is why it can show signs such as wrinkles, veining and scars that indicate the animal origin of the product. These signs, together with slightly color differences, are distinctive elements that enhance its beauty and distinguish it from faux leather or other artificial products. Fiore

is a bovine leather from animals of European origin, finished with water-based dyeing with resins and pigments. Fiore leather has the ability of improving with time and use, both in softness and shine.

Dust the leather product regularly with a soft and dry cloth. In case of stains, rub the affected area with a soft and clean cloth, moistened with water or to use a light solution of water and mild soap, to be applied gently with a wet cloth. Move the cloth in a circular direction, starting from edges of the stain towards the center. Rinse well with a damp cloth. Dry immediately after treatment. Avoid direct sunlight and exposure to heat sources.

We recommend that you always test the cleaning method on a hidden part of the item to check the resistance of the color.



Wrap P M TS Chair

design Balutto Associati, 2016

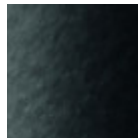
Wrap chair with four legs base in lacquered steel. Shell upholstered in leather, ecoleather, fabric or custom's fabric.

Colors and Materials

Structure



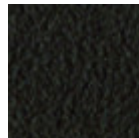
White steel



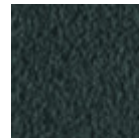
Black steel



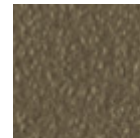
Sand steel



Brown steel



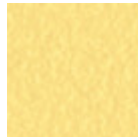
Grafite metal



Fango steel



Bronze metal



Pastel yellow steel



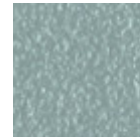
Ocher steel



Red steel



Sage green metal



Light blue metal



Ocean blue steel

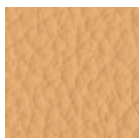


Light grey steel

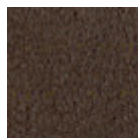


Facepowder pink metal

Coating



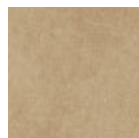
Fiore leather
21 Colors



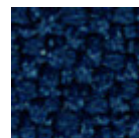
Vintage leather
8 Colors



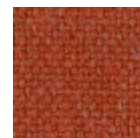
Secret faux leather
23 Colors



Vintage faux leather
12 Colors



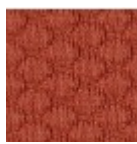
Mirage fabric
15 Colors



Cotton Club fabric
14 Colors

**Fenix Wool fabric**

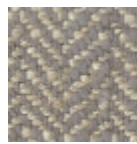
16 Colors

**Visual fabric**

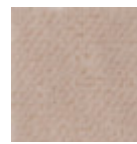
13 Colors

**Main Line Flax fabric**

16 Colors

**Second fabric**

11 Colors

**Velvet Superb**

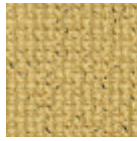
15 Colors

**Tessuto Oceanic**

13 Colors

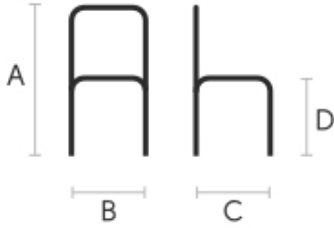
**Manhattan fabric**

13 Colors

**Yoredale fabric**

14 Colors

Dimensions



	cm	inch
A	79	31.1
B	58	22.8
C	59	23.2
D	47	18.5

Volumetric Details

Weight 8.4 Kg**Volume** 0.33 mc**Package** 1

Downloads

[.3ds Wrap P M TS \(zip\)](https://www.midj.com/images/uploads/resources/3d-midj-wrap-p-m-ts-3ds.zip) - <https://www.midj.com/images/uploads/resources/3d-midj-wrap-p-m-ts-3ds.zip>[.dae Wrap P M TS \(zip\)](https://www.midj.com/images/uploads/resources/3d-midj-wrap-p-m-ts-dae.zip) - <https://www.midj.com/images/uploads/resources/3d-midj-wrap-p-m-ts-dae.zip>[.dxf Wrap P M TS \(zip\)](https://www.midj.com/images/uploads/resources/3d-midj-wrap-p-m-ts-dxf.zip) - <https://www.midj.com/images/uploads/resources/3d-midj-wrap-p-m-ts-dxf.zip>[.obj Wrap P M TS \(zip\)](https://www.midj.com/images/uploads/resources/3d-midj-wrap-p-m-ts-obj.zip) - <https://www.midj.com/images/uploads/resources/3d-midj-wrap-p-m-ts-obj.zip>[.stl Wrap P M TS \(zip\)](https://www.midj.com/images/uploads/resources/3d-midj-wrap-p-m-ts-stl.zip) - <https://www.midj.com/images/uploads/resources/3d-midj-wrap-p-m-ts-stl.zip>

Materials Certifications

Fiore leather

COMPOSITION: 100% leather

FIRE RESISTANCE:

CAL TB-117 (2013, Sec. 1)

BS 5852:1979

BS EN 1021-1-2:2006

Fiore leather is a natural product and this is why it can show signs such as wrinkles, veining and scars that indicate the animal origin of the product. These signs, together with slightly color differences, are distinctive elements that enhance its beauty and distinguish it from faux leather or other artificial products. Fiore

is a bovine leather from animals of European origin, finished with water-based dyeing with resins and pigments. Fiore leather has the ability of improving with time and use, both in softness and shine.

Dust the leather product regularly with a soft and dry cloth. In case of stains, rub the affected area with a soft and clean cloth, moistened with water or to use a light solution of water and mild soap, to be applied gently with a wet cloth. Move the cloth in a circular direction, starting from edges of the stain towards the center. Rinse well with a damp cloth. Dry immediately after treatment. Avoid direct sunlight and exposure to heat sources.

We recommend that you always test the cleaning method on a hidden part of the item to check the resistance of the color.

These tips are cleaning recommendations and do not guarantee complete stain removal. In case of large