

# MIDJ



## Sunrise H190 Divider

design Franco Poli, 2020

Sunrise room divider designed by Franco Poli is characterized by a tubular metal structure in matt or glossy finishes and a panel in hide or Tuscan hide decorated with precious carvings.

The Sunrise collection consists of three elements of different shapes and heights.

### Colors and Materials

#### Structure



Light blue metal



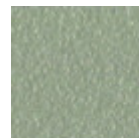
White steel



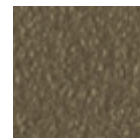
Ocean blue steel



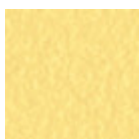
Bronze metal



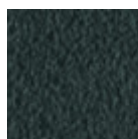
Sand steel



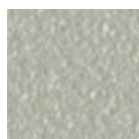
Fango steel



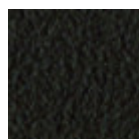
Pastel yellow steel



Grafite metal



Light grey steel



Brown steel



Black steel



Ocher steel



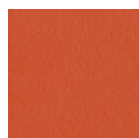
Facepowder pink metal



Red steel



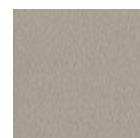
Sage green metal



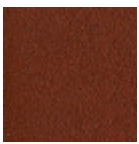
Papaya orange steel



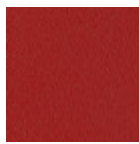
Golden yellow metal



Ash grey metal



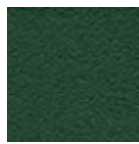
Bulgaro red metal



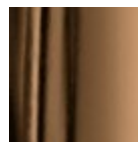
Cherry red metal



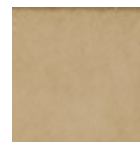
Pine green steel



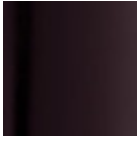
Dark green metal



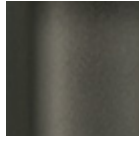
Golden bronze



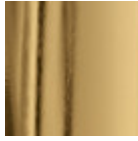
Matt golden bronze



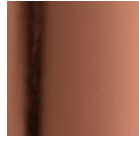
Black Nickel



Matt black nickel



Golden champagne



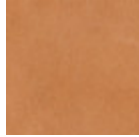
Pink Gold

## Coating



TK Hide

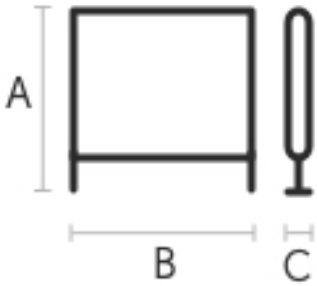
13 Colors



Tuscan hide

6 Colors

## Dimensions



	cm	inch
A	190	74.8
B	70	27.6
C	44	17.3

## Volumetric Details

Weight 14 Kg

Volume 0.65 mc

Package 1

## Materials Certifications

### Dark green metal

The technologies used in the previous phase of powder coating play a fundamental role in the final result of the processing. They are in fact essential to increase adherence paint on the metal surface and then guarantee its duration over time. The metal frames, following a total cleaning of the surface, pass through chemical conversion processes, creating a compact base that allows for better adhesion of the subsequent treatment. In the last phase the object subjected to the powder coating process is placed in a polymerization oven, going to form an adherent and extremely tight layer durable. This particular paint job is ideal for outdoor use.

To clean the surface, use a damp microfiber cloth with neutral soap or specific metal cleaning products. Avoid hitting or rubbing the surface with sharp objects. Do not use scourers or other abrasive materials, since they would inevitably scratch the surface. Do not leave rusty iron objects on the surface for too long.

These surface treatments are not suitable for outdoor use, but they guarantee excellent resistance to frequent use, dirt and dust.

## Materials Certifications

### Matt golden bronze

Galvanic treatments consist in applying a thin layer of a metal or other alloy, in order that properties of the

# MIDJ

## Sunrise H170 Divider

design Franco Poli, 2020



Easy to set and move, the Sunrise room divider can also have a purely decorative function. It lets the light filter through, creating fantastic shadow effects.

The divider is made with a metal frame and a hide or Tuscan hide mesh. Available in three different variants.

### Colors and Materials

#### Structure



Light blue metal



White steel



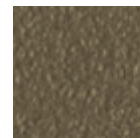
Ocean blue steel



Bronze metal



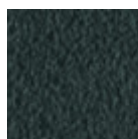
Sand steel



Fango steel



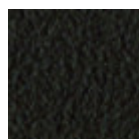
Pastel yellow steel



Grafite metal



Light grey steel



Brown steel



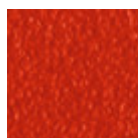
Black steel



Ocher steel



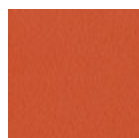
Facepowder pink metal



Red steel



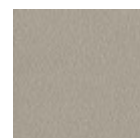
Sage green metal



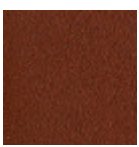
Papaya orange steel



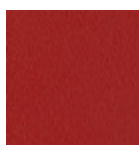
Golden yellow metal



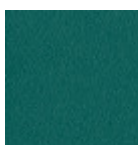
Ash grey metal



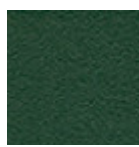
Bulgaro red metal



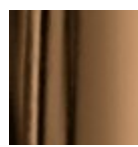
Cherry red metal



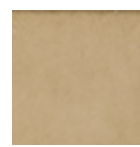
Pine green steel



Dark green metal



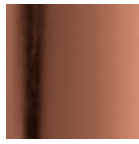
Golden bronze



Matt golden bronze



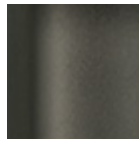
Golden champagne



Pink Gold



Black Nickel



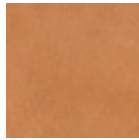
Matt black nickel

## Coating



TK Hide

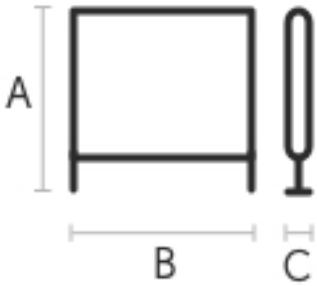
13 Colors



Tuscan hide

6 Colors

## Dimensions



	cm	inch
A	170	66.9
B	90	35.4
C	40	15.7

## Volumetric Details

Weight 14.5 Kg

Volume 0.68 mc

Package 1

## Materials Certifications

### Dark green metal

The technologies used in the previous phase of powder coating play a fundamental role in the final result of the processing. They are in fact essential to increase adherence paint on the metal surface and then guarantee its duration over time. The metal frames, following a total cleaning of the surface, pass through chemical conversion processes, creating a compact base that allows for better adhesion of the subsequent treatment. In the last phase the object subjected to the powder coating process is placed in a polymerization oven, going to form an adherent and extremely tight layer durable. This particular paint job is ideal for outdoor use.

To clean the surface, use a damp microfiber cloth with neutral soap or specific metal cleaning products. Avoid hitting or rubbing the surface with sharp objects. Do not use scourers or other abrasive materials, since they would inevitably scratch the surface. Do not leave rusty iron objects on the surface for too long.

These surface treatments are not suitable for outdoor use, but they guarantee excellent resistance to frequent use, dirt and dust.

## Materials Certifications

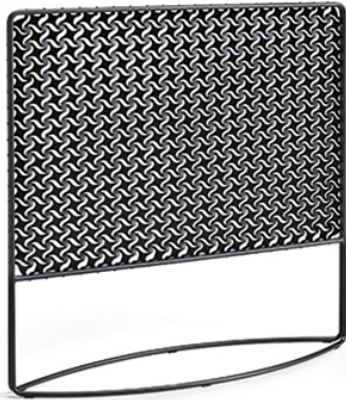
### Matt golden bronze

Galvanic treatments consist in applying a thin layer of a metal or other alloy, in order that properties of the

# MIDJ

## Sunrise H128 Divider

design Franco Poli, 2020



The screen is a dividing element that allows you to define and redefine spaces, to create new environments and reserved corners for the occasion, in a flexible and non-definitive way.

The Sunrise room divider is made with a metal frame and a hide or Tuscan hide mesh.

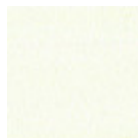
The Sunrise collection consists of three elements of different shapes and sizes.

### Colors and Materials

#### Structure



Light blue metal



White steel



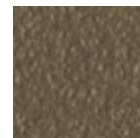
Ocean blue steel



Bronze metal



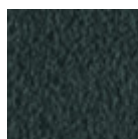
Sand steel



Fango steel



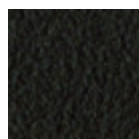
Pastel yellow steel



Grafite metal



Light grey steel



Brown steel



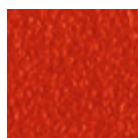
Black steel



Ocher steel



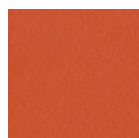
Facepowder pink metal



Red steel



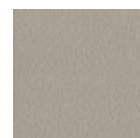
Sage green metal



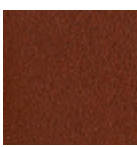
Papaya orange steel



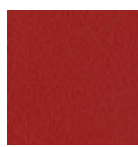
Golden yellow metal



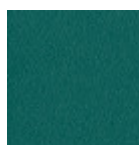
Ash grey metal



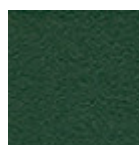
Bulguro red metal



Cherry red metal



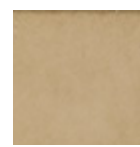
Pine green steel



Dark green metal



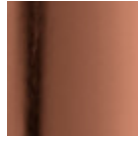
Golden bronze



Matt golden bronze

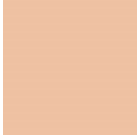


Golden champagne



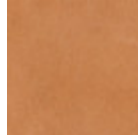
Pink Gold

## Coating



TK Hide

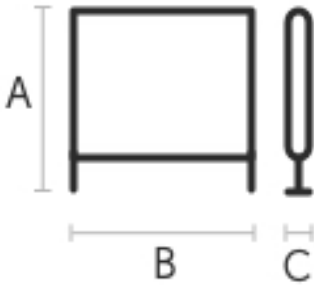
13 Colors



Tuscan hide

6 Colors

## Dimensions



	cm	inch
A	128	50.4
B	132	52
C	44	17.3

## Volumetric Details

Weight 15 Kg

Volume 0.82 mc

Package 1

## Materials Certifications

### Dark green metal

The technologies used in the previous phase of powder coating play a fundamental role in the final result of the processing. They are in fact essential to increase adherence paint on the metal surface and then guarantee its duration over time. The metal frames, following a total cleaning of the surface, pass through chemical conversion processes, creating a compact base that allows for better adhesion of the subsequent treatment. In the last phase the object subjected to the powder coating process is placed in a polymerization oven, going to form an adherent and extremely tight layer durable. This particular paint job is ideal for outdoor use.

To clean the surface, use a damp microfiber cloth with neutral soap or specific metal cleaning products. Avoid hitting or rubbing the surface with sharp objects. Do not use scourers or other abrasive materials, since they would inevitably scratch the surface. Do not leave rusty iron objects on the surface for too long.

These surface treatments are not suitable for outdoor use, but they guarantee excellent resistance to frequent use, dirt and dust.

## Materials Certifications

### Matt golden bronze

Galvanic treatments consist in applying a thin layer of a metal or other alloy, in order that properties of the