

ADD T

Francesco Rota | 2016

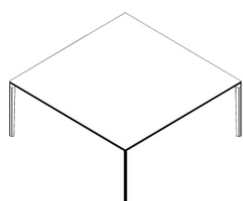


ADD T

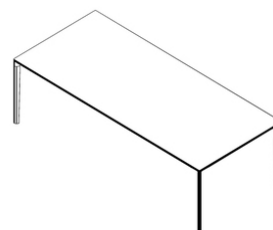
Francesco Rota | 2016

Writing, reading, and when the community is enlarged, working and meeting. Minimalist like a verb in its infinitive form, the ADD T table meets the requirements of any environment. With its lightness and great character, the table sparkles with life and its adaptability completes the ADD seating system. Thanks to its die-cast aluminium legs, which create a single corner solution or is extended with the addition of frames, multiple compositions can be created. Cables run, concealed and fixed under the profile. Sockets and power adaptors are inserted in the tabletop. For a calm day, where everything is user-friendly.

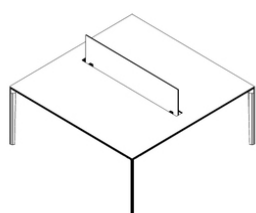




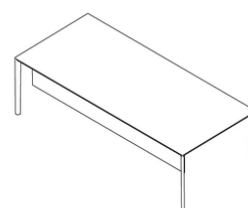
Square



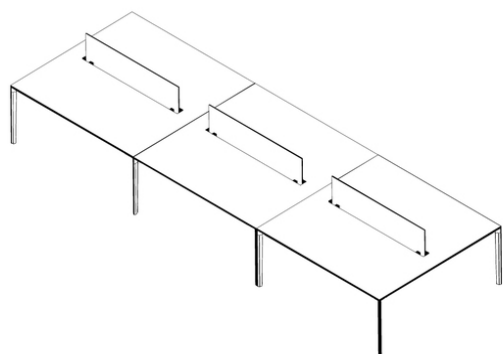
Rectangle



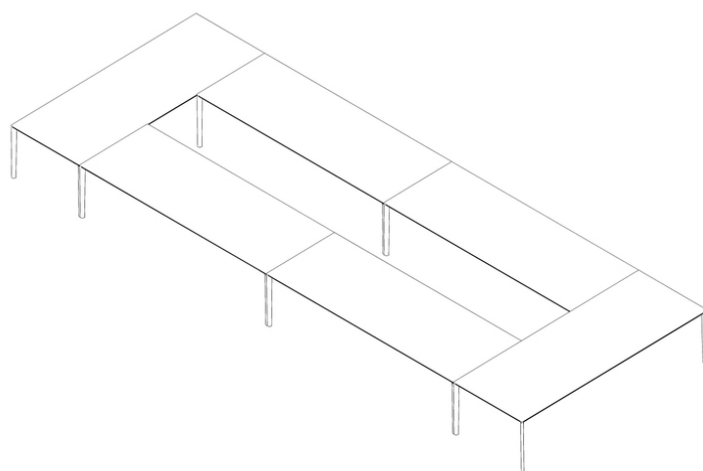
Privacy screen



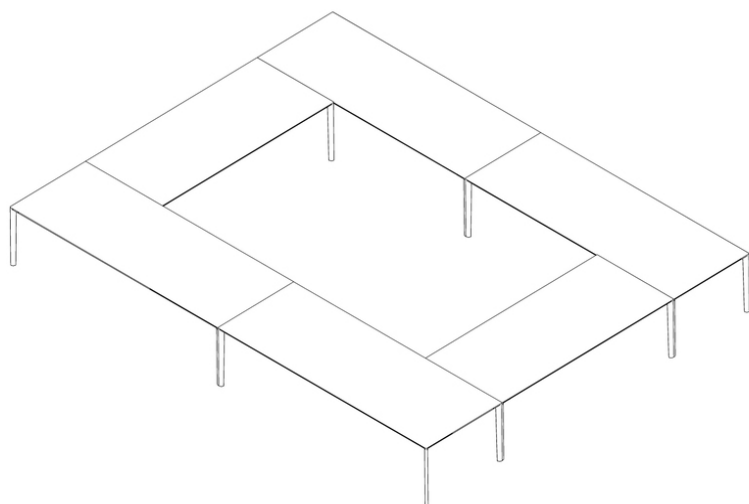
Modesty screen



Linked



Rectangular conference



Square conference

ADD T

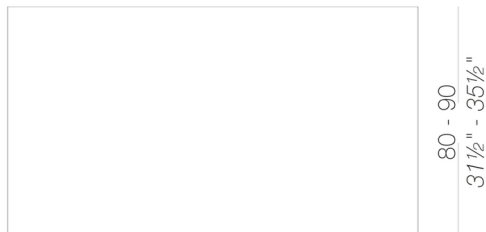
Francesco Rota | 2016

Modular system of tables with frame in aluminium extrusion and die-cast aluminium corner and linking legs, all powder coated, which allows several configurations. Tops available in HPL Fenix® 10 mm or veneered in wood in several finishes.

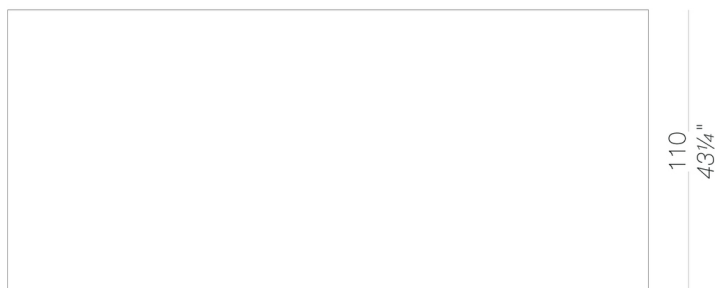
legs



tops



160 - 180 - 200
63" - 71" - 78³/₄"

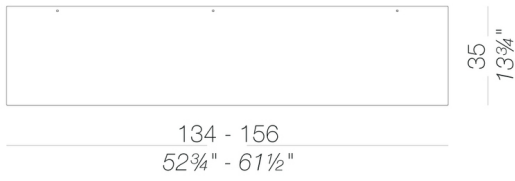


250 - 300
98¹/₂" - 118"

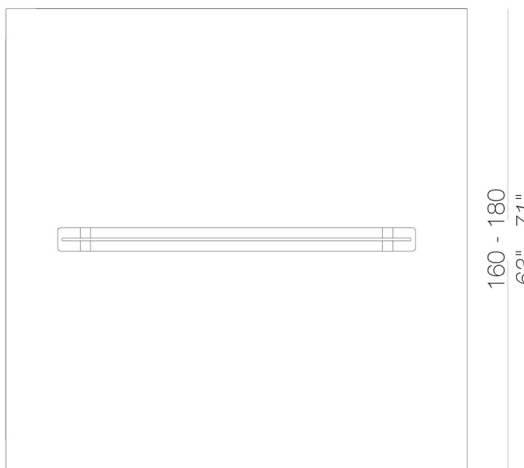
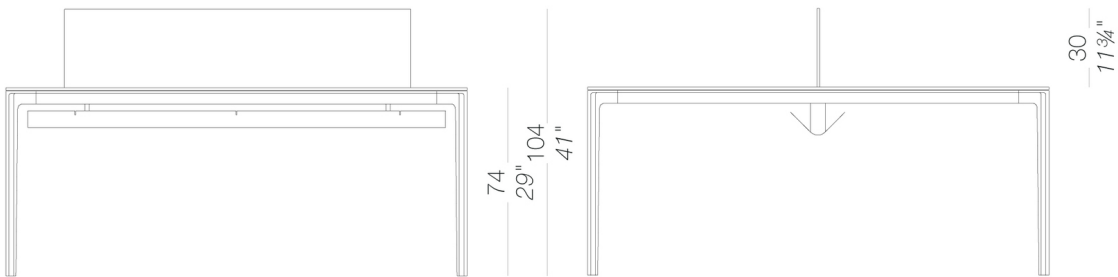
ADD T

Francesco Rota | 2016

modesty panel



desk with partition panel and metal tray for cabling



partition panel



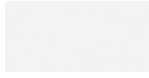
ADD T

Francesco Rota | 2016

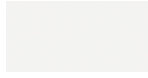
frame



powder coating
black
1 Colors



powder coating
white
1 Colors

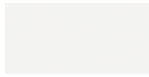


powder coating
white
1 Colors

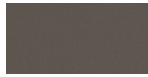
top



HPL 10 mm
black HPL fenix
1 Colors



HPL 10 mm
white HPL fenix
1 Colors



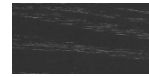
HPL 10 mm
HPL fenix grigio
Londra
1 Colors



HPL 10 mm
HPL fenix rosso
Jaipur
1 Colors

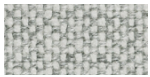


wood
blached oak
1 Colors



wood
black open pore
1 Colors

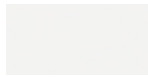
partition panel



fabric
Hallingdal 65 -
Grade C
58 Colors



HPL 10 mm
black HPL fenix
1 Colors



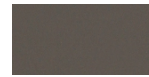
HPL 10 mm
white HPL fenix
1 Colors



fabric
Canvas 2 - Grade C
45 Colors



fabric
Steelcut Trio 3 -
Grade D
54 Colors



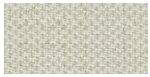
HPL 10 mm
HPL fenix grigio
Londra
1 Colors



fabric
Remix 3 - Grade C
72 Colors



HPL 10 mm
HPL fenix rosso
Jaipur
1 Colors



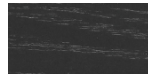
fabric
Clara 2 - Grade C
24 Colors



wood
blached oak
1 Colors



fabric
Fiord 2 - Grade C
39 Colors



wood
black open pore
1 Colors



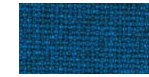
fabric
Divina MD - Grade D
27 Colors



fabric
Divina Melange 3 -
Grade D
38 Colors



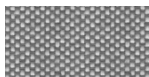
fabric
Tonica 2 - Grade C
39 Colors



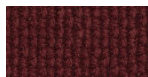
fabric
Medley - Grade A
37 Colors



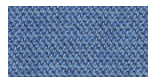
fabric
Jet - Grade A
66 Colors



fabric
Maya - Grade A
43 Colors



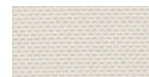
fabric
Lapalma Smart -
Grade C
18 Colors



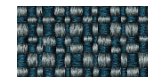
fabric
Capture - Grade B
43 Colors



fabric
Crisp - Grade B
40 Colors



fabric
Nattè - Grade B
30 Colors



fabric
Iliris - Grade B
24 Colors



fabric
Steelcut 3 - Grade D
40 Colors



fabric
Grain - Grade B
50 Colors

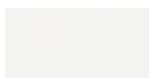


fabric
Re-wool - Grade C
21 Colors

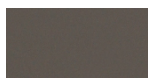
modesty panel



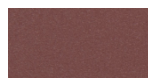
HPL 10 mm
black HPL fenix
1 Colors



HPL 10 mm
white HPL fenix
1 Colors



HPL 10 mm
HPL fenix grigio
Londra
1 Colors



HPL 10 mm
HPL fenix rosso
Jaipur
1 Colors

consult the portfolio for the range of colors, fabrics, eco-leather, soft-leather.

use and maintenance instructions

Clean all parts in wood, leather, fabric and metal with a damp cloth or a diluted neutral cleaner. Do not use cleaners with alcohol, bleach, solvent or abrasive products. Any liquid spilt on the product must be wiped up immediately. When lifting or moving the product, hold it on the structure and not under the seat. The product should not be subjected to unbalanced weights, as it is designed for a proper rest on the foothold (on four legs or on the base). Our company relieves from any responsibility in case of damage caused to fragile floors. Avoid any improper use of the product: do not step on the product, on the footrest or on the armrests. Avoid any movements that could compromise the proper functionality of the product or the safety of the users. Wood and leather, being natural materials, could be easily damaged. Small impurities or imperfections are within quality standard range. Do not expose the product to weather conditions or atmospheric agents, nor to heat sources over 40°C. Also products for outdoor use could be afflicted by atmospheric agents. The product could undergo possible exterior changes due to particular exposure to heat, humidity and saltiness. An appropriate and frequent maintenance and cleaning of the product enhances its durability. The product could change colour and shade, if exposed to direct sunlight. Maintenance has to be carried out by experienced staff. Dispose of the package only after assembling the product, in order to avoid the loss of ironmongery and components. Once the product has been dismantled, the product itself or its components must be given to the public garbage disposal system, according to the legislation in force.

ADD T

Francesco Rota | 2016





Francesco Rota | 2016

Gathering around a table, an action combined with the most important place for a meeting. But only “large” tables know how to be really accommodating. And to be ideal for everyone, the design is minimalist with the most extreme simplicity to make it highly elegant. It is almost like the framework of a leaf that sends sap to every single part. The veins are its die-cast aluminium legs that create a single corner solution or continue with the addition of frames. It is called ADD T, the protagonist of the ADD seating system in any natural and contemporary setting.

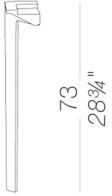


ADD T

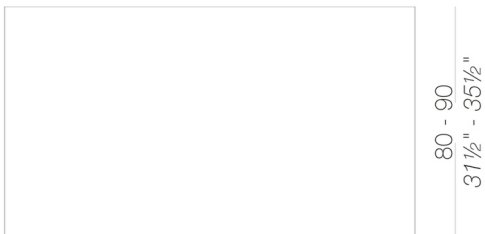
Francesco Rota | 2016

Modular system of tables with frame in aluminium extrusion and die-cast corner and linking legs which allow several configurations. Tops available in HPL Fenix® 10 mm.

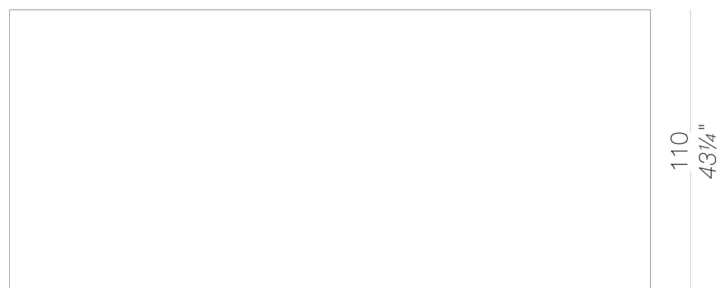
legs



tops



160 - 180 - 200
63" - 71" - 78³/₄"



250 - 300
98¹/₂" - 118"

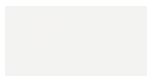
ADD T

Francesco Rota | 2016

frame



powder coating
black
1 Colors

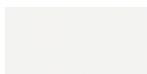


powder coating
white
1 Colors

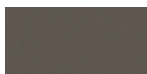
top



HPL 10 mm
black HPL fenix
1 Colors



HPL 10 mm
white HPL fenix
1 Colors



HPL 10 mm
HPL fenix grigio
Londra
1 Colors



HPL 10 mm
HPL fenix rosso
Jaipur
1 Colors

consult the folder of materials for the range of colors

use and maintenance instructions

Plastic materials, even if intended for outdoor use, may still be attacked over time by particular atmospheric pollutants (e.g. acid rain, high concentration of PM10, nitrogen oxides, hydrocarbons, etc.). Any changes in the surface and in colours may therefore occur under particular conditions of exposure and cannot be considered grounds for any claims.

Do not use detergents containing bleach, hydrochloric acid or products containing chloride on any metal parts. Salt, limescale or acid (from coffee, wine, orange juice, tomato juice, lemon, etc.) may discolour stainless steel parts if they are not promptly cleaned. Products or parts made of stainless steel used near the sea or in interior fittings of swimming pools require more frequent cleaning to remove chloride deposits and prevent corrosion and chemical attack of the external surface. Stains on stainless steel surfaces must be promptly cleaned. If left for a long time they can become permanent.

To prolong the life of the product, clean the surfaces regularly, dry them with a clean cloth and remove any stagnant water, especially if exposed in locations with a high level of humidity or a marine climate.

When not in use, we recommend storing in sheltered places and covering with waterproof protection. In this case, it is advisable to remove the cover and ventilate the product frequently and regularly to avoid the onset of any mould or stains due to damp.

THE WARRANTY WILL NOT COVER DEFECTS OR IMPERFECTIONS RESULTING FROM THE PASSAGE OF TIME OR TO WEAR AND TEAR DUE TO THE NORMAL USE OF THE PRODUCT.