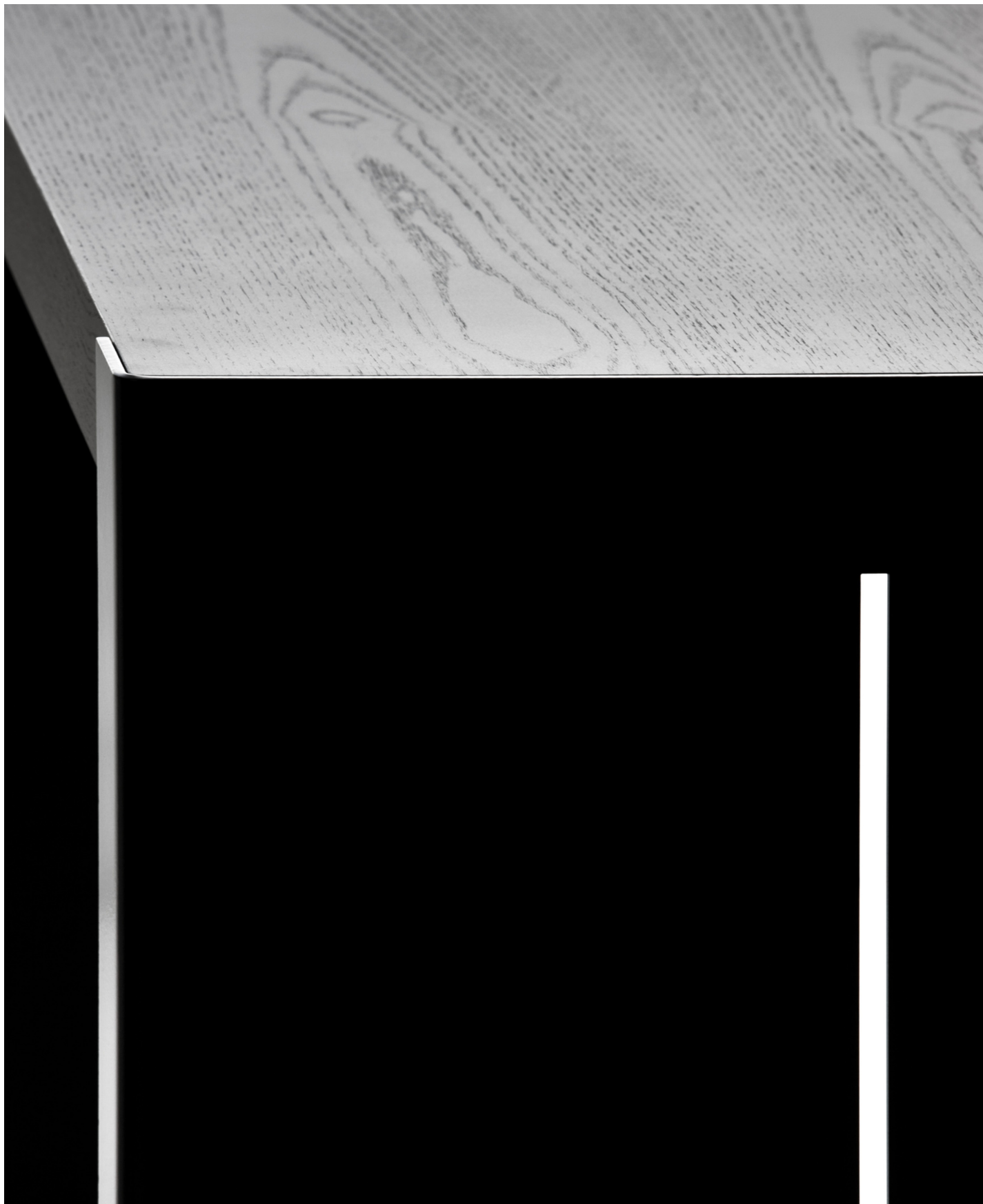


# PANCO

Romano Marcato | 2008

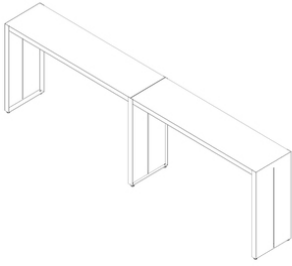


# PANCO

Romano Marcato | 2008

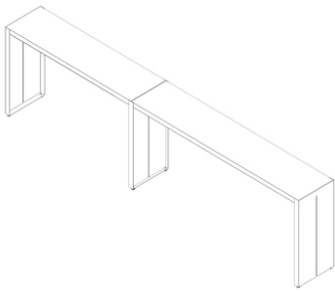
This collection of high tables, adding strength and character to any space, is the result of a combination of wood and metal. In a straight line, single or sinuous elements can be freely used to create a system. And the slits in the side legs, made of bent metal, recall the movement and elegant seduction of an evening dress.





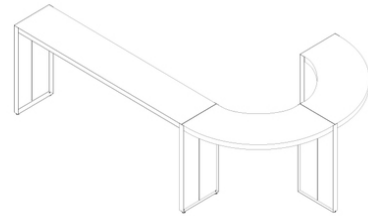
Symmetric

---



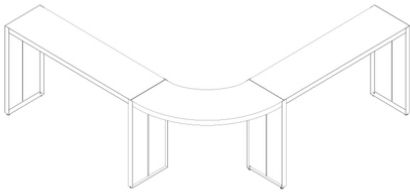
Asymmetric

---



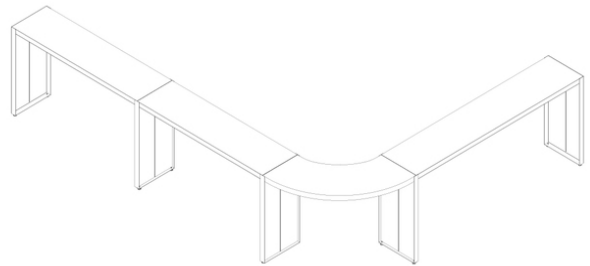
J\_shape

---



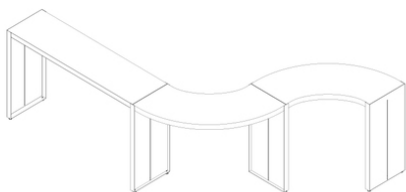
L\_shape —small

---



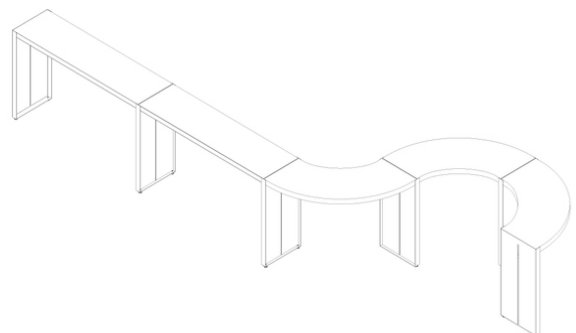
L\_shape —big

---



S\_shape

---



S\_shape —big

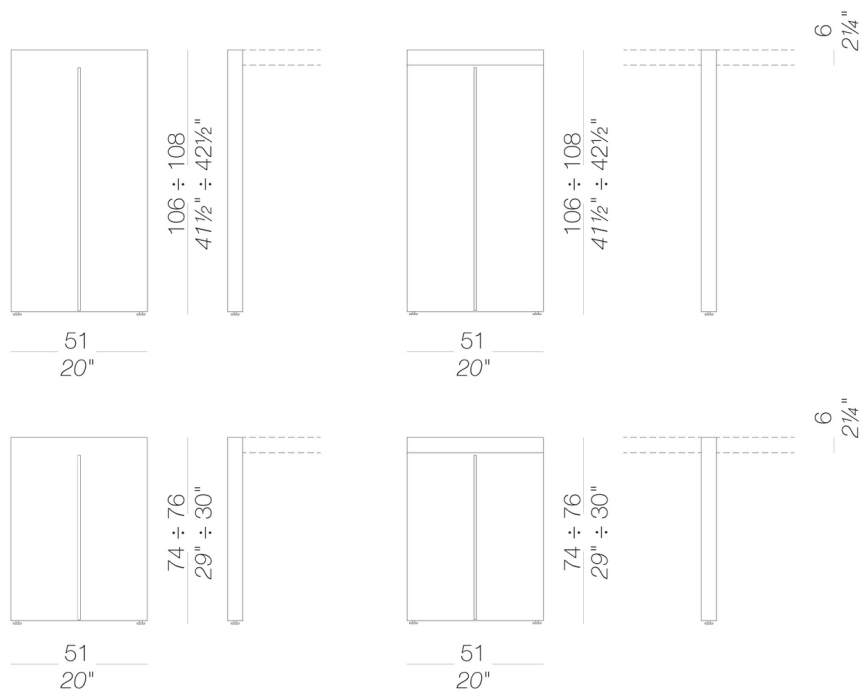
---

# PANCO

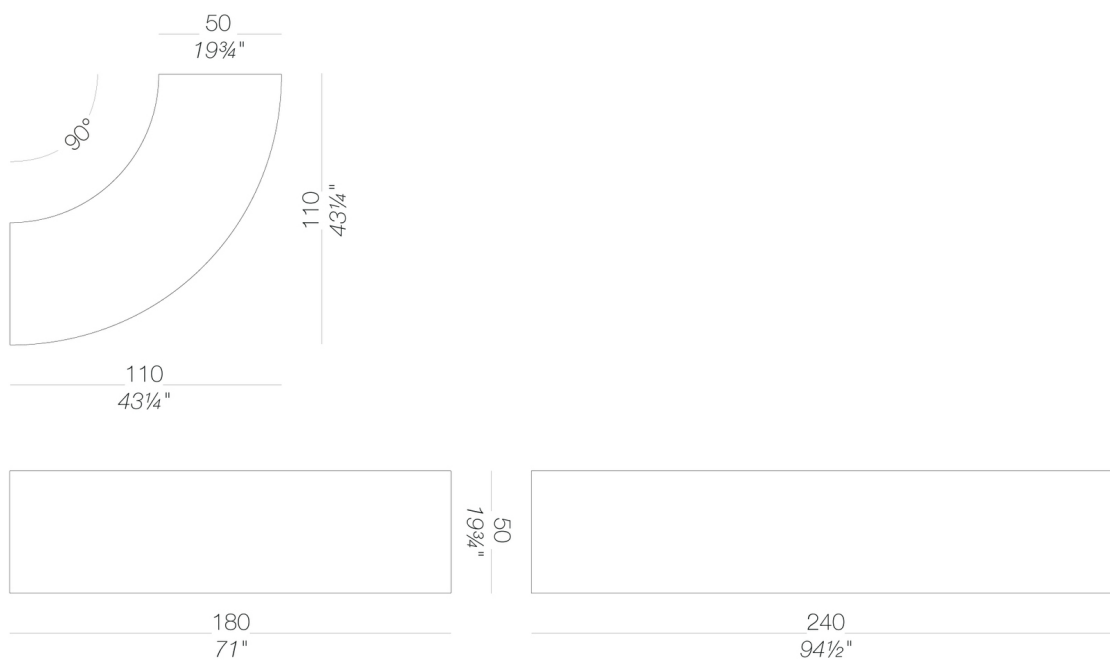
Romano Marcato | 2008

Modular system of tables, available in two lengths and two heights and a curved element. Top in honeycomb board in several finishes. Legs in metal, powder coated with adjustable feet.

## legs



## tops



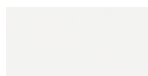
# PANCO

Romano Marcato | 2008

## frame



powder coating  
black  
1 Colors

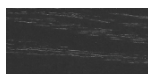


powder coating  
white  
1 Colors

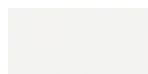
## top



wood  
blanched oak  
1 Colors



wood  
black open pore  
1 Colors



laminate  
406 abet 9/10  
1 Colors

**consult the portfolio for the range of colors, fabrics, eco-leather, soft-leather.**

### use and maintenance instructions

Clean all parts in wood, leather, fabric and metal with a damp cloth or a diluted neutral cleaner. Do not use cleaners with alcohol, bleach, solvent or abrasive products. Any liquid spilt on the product must be wiped up immediately. When lifting or moving the product, hold it on the structure and not under the seat. The product should not be subjected to unbalanced weights, as it is designed for a proper rest on the foothold (on four legs or on the base). Our company relieves from any responsibility in case of damage caused to fragile floors. Avoid any improper use of the product: do not step on the product, on the footrest or on the armrests. Avoid any movements that could compromise the proper functionality of the product or the safety of the users. Wood and leather, being natural materials, could be easily damaged. Small impurities or imperfections are within quality standard range. Do not expose the product to weather conditions or atmospheric agents, nor to heat sources over 40°C. Also products for outdoor use could be afflicted by atmospheric agents. The product could undergo possible exterior changes due to particular exposure to heat, humidity and saltiness. An appropriate and frequent maintenance and cleaning of the product enhances its durability. The product could change colour and shade, if exposed to direct sunlight. Maintenance has to be carried out by experienced staff. Dispose of the package only after assembling the product, in order to avoid the loss of ironmongery and components. Once the product has been dismantled, the product itself or its components must be given to the public garbage disposal system, according to the legislation in force.

# PANCO

Romano Marcato | 2019







# PANCO

Romano Marcato | 2019

It has its origins in the Italian countryside in line with popular tradition and with the same solidity it splendidly reflects the panorama of contemporary architecture. Majestic and elegant, PANCO represents a sincere and generous convivial atmosphere. The tabletop is made of warm and resistant antique-finish Iroko wood. It has steel legs and a cut-out in its sides that conveys lightness and dynamic appeal. The bench, made of the same materials, complements the festive atmosphere and can be concealed under the table. In the company of your family or friends, harmony is achieved.



## EP191 | outdoor table top in solid Iroko wood 240x90 H75

Table with stainless steel legs Aisi 304 powder coated polyester and top in solid Iroko wood. A bench with the same finishes is also available.



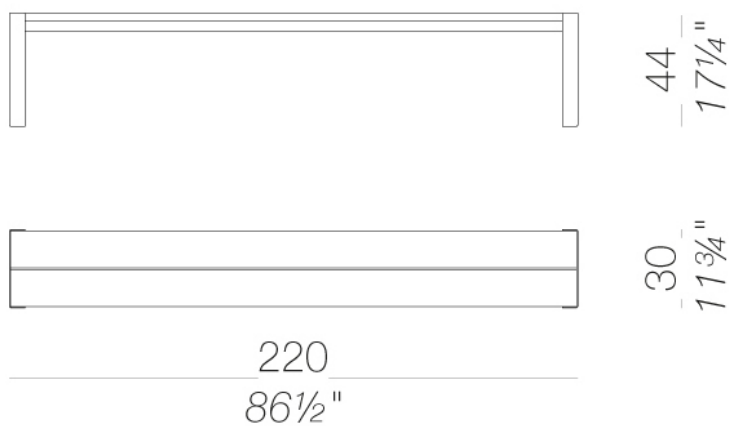


# PANCO

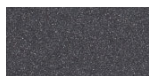
Romano Marcato | 2019

**EP193 | outdoor bench seat in solid Iroko wood 220x30 H44** ☀️

Bench with stainless steel legs Aisi 304 powder coated polyester and seat in solid Iroko wood.



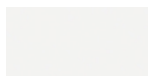
## frame



powder coating

anthracite

1 Colors



powder coating

white

1 Colors

## seating



wood

iroko

1 Colors

## top



wood

iroko

1 Colors

## consult the folder of materials for the range of colors

### use and maintenance instructions

Iroko is a naturally weather-resistant wood, as it is rich in tannins, making it ideal for outdoor use. When exposed to light, the colour gradually darkens and every variation in grain shade from brown, chestnut brown to dark grey are characteristic of this wood type. The presence of different grain patterns, knots and natural imperfections guarantee the naturalness of the wood and do not constitute any grounds for claims. To prolong the life of Iroko components, clean surfaces regularly, dry them with a clean cloth and remove any stagnant water. To prevent drying out of the surface, small cracks and/or the formation of mould, we recommend treating the wood once a year with specific products for the maintenance of solid wood (recommended product "OLTS7" water-based natural oil from [www.brava.it](http://www.brava.it)). Do not use detergents containing bleach, hydrochloric acid or products containing chloride on any metal parts. Salt, limescale or acid (from coffee, wine, orange juice, tomato juice, lemon, etc.) may discolour stainless steel parts if they are not promptly cleaned. Products or parts made of stainless steel used near the sea or in interior fittings of swimming pools require more frequent cleaning to remove chloride deposits and prevent corrosion and chemical attack of the external surface. Stains on stainless steel surfaces must be promptly cleaned. If left for a long time they can become permanent.

To prolong the life of the product, clean the surfaces regularly, dry them with a clean cloth and remove any stagnant water, especially if exposed in locations with a high level of humidity or a marine climate.

When not in use, we recommend storing in sheltered places and covering with waterproof protection. In this case, it is advisable to remove the cover and ventilate the product frequently and regularly to avoid the onset of any mould or stains due to damp.

THE WARRANTY WILL NOT COVER DEFECTS OR IMPERFECTIONS RESULTING FROM THE PASSAGE OF TIME OR TO WEAR AND TEAR DUE TO THE NORMAL USE OF THE PRODUCT.