

# MAGIS

Pipe by Jasper Morrison



# Jasper Morrison



## Profile:

Jasper Morrison was born in London in 1959. He graduated in Design at Kingston Polytechnic Design School, London and The Royal College of Art for Postgraduate studies which included a scholarship at HdK in Berlin. In 1986 he set up an Office for Design in London. Today Jasper Morrison Ltd. consists of three design offices, a main office in London and two branch offices: one in Paris (opened 2002) and one in Tokyo (opened 2007). Services offered by Jasper Morrison Ltd. are wide ranging, from tableware and kitchen products to furniture and

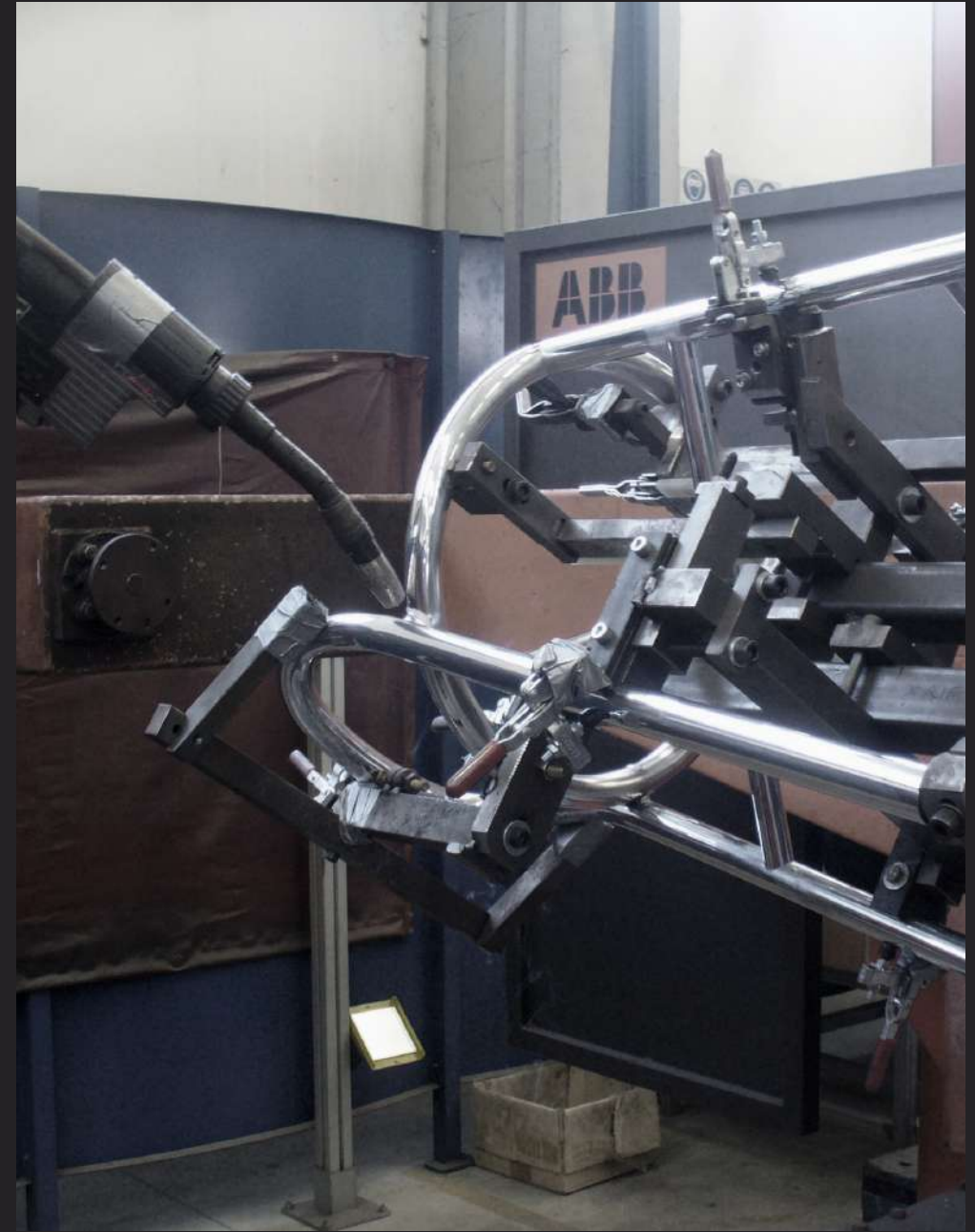
lighting, sanitary-ware, electronics and appliance design. He has clients across the globe, all leaders in their individual fields. The collaboration with Magis started in the 90s and became a long lasting and fruitful relationship. Today our range includes products such as the stackable Bottle rack, the legendary Air-Family made in gas-injection moulding, the streamlined paper bin Trash or the Pipe collection made of tubular aluminium frames. Among these Plato is the latest member and a further proof for a successful relationship.

# Design and

Pipe is an essential chair. It has an aluminium tube structure and an option of seat and back in punched aluminium plate with holes (in white, black or mustard colours) for outdoor use or in beech plywood (light or dark) for indoors use. It's available in two different versions, with or without armrests.

It also has a special technical feature: seat and back are fixed to the aluminium tube frame through a special glue allowing to fix them without using any screws and rivets.

The stool, available in two heights and the table available in two versions, complete the family.



# Engineering



“It’s beautifully made and probably one of the strongest chairs ever built as



I chose a large diameter tube and the structure is very rigid”

*Jasper Morrison*

# Information



# Product

## CHAIRS

Frame in aluminium tube, painted in polyester powder. Seat and back in punched aluminium plate, painted in polyester powder or in beech plywood. Versions for outdoor use also available.

## STOOLS

Frame in aluminium tube, painted in polyester powder. Seat in punched aluminium plate, painted in polyester powder or in beech plywood. Versions for outdoor use also available.

## TABLES

Base in steel plate. Frame in steel, cathaphoretically-treated and painted in polyester powder. Top in beech plywood.

## CHAIRS



Frame in aluminium /  
White 5107  
Black 5130

Seat and back in aluminium /  
White 5107  
Black 5130



Frame in aluminium /  
White 5107  
Black 5130

Seat and back in beech plywood/  
Light-coloured 7009  
Dark-coloured 7055

## STOOLS



Frame in aluminium /  
White 5107  
Black 5130

Seat in aluminium /  
White 5107  
Black 5130



Frame in aluminium /  
White 5107  
Black 5130

Seat in beech plywood/  
Light-coloured 7009  
Dark-coloured 7055

## TABLE 71x71



Frame in aluminium /  
White 5107  
Black 5130

Top in beech plywood/  
Light-coloured 7009  
Dark-coloured 7055

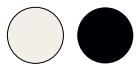
## TABLE Ø 66



Frame in aluminium /  
White 5107  
Black 5130

Top in beech plywood/  
Light-coloured 7009  
Dark-coloured 7055

Frame in aluminium /



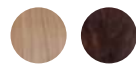
White 5107  
Black 5130

Seat and back in aluminium /



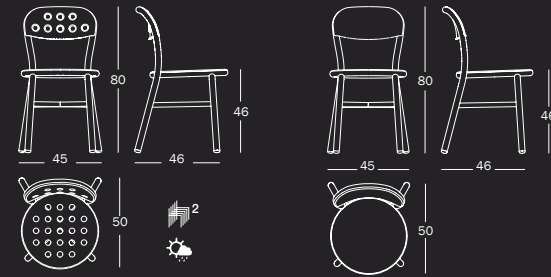
White 5107  
Black 5130

Seat, back and top in beech plywood /

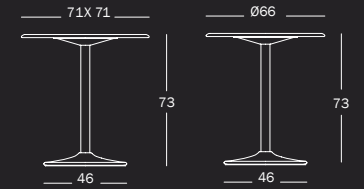


light coloured 7009  
dark coloured 7055

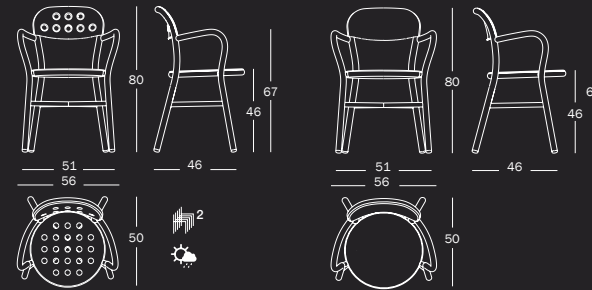
## Pipe chair



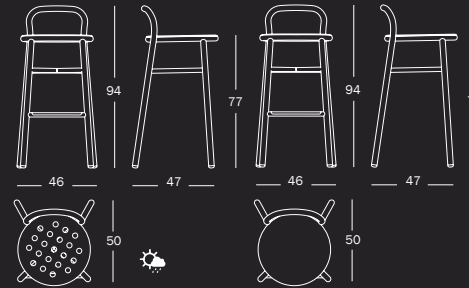
## Pipe table



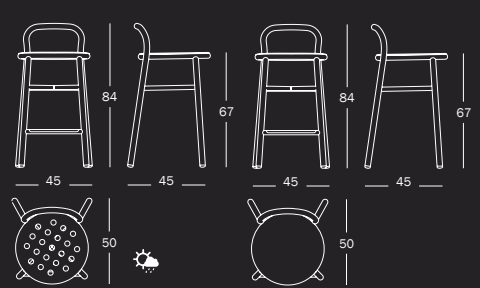
## Pipe chair w/armrests



## Pipe stool high



## Pipe stool medium



## PRODUCT CARE

We recommend using a soft rag, either dry or wet. When needed, use ph-balanced soap diluted in water. Do not use abrasive sponges as they may leave scratches. Immediately dry after washing with a soft rag or a chamois leather. For the beech plywood version avoid using acidic substances, solvents and products containing ammonia. Use eventually ph-balanced liquid soap especially formulated for wood, diluted in water. Periodic and correct maintenance allows the product to keep its original aspect and lengthens the duration of its performance.

## WARNING

Do not use different cleaning products from the ones mentioned above. Do not use the product in an improper way. Do not place hot objects on it, sit down on the back and/or on the arms, stand on the seat or use the product as a ladder. Once disused, please make sure that this item is disposed of in an environmentally-friendly way.

